

State of the Nation Address / Opening of Parliament – 13 February 2020.

Transport Management Plan - Closures, Parking Restrictions, Alternative Routes, Bus Services

The Opening of Parliament takes place on Thursday, 13 February 2020 at 19:00. There will be rehearsals on Tuesday 11 & Wednesday 12 February 2020 at 18:00.

Road Closures: for rehearsals and the event.

Affected Road NB: Including intersections except where noted.	Tuesday 11 February 2020	Wednesday 12 February 2020	Thursday 13 February 2020
City and Foreshore			
Wale St: between Burg and Adderley St's.	None	None	06:00-23:45
Bureau St: between Adderley and Parliament St's.	17:00-22:00	17:00-22:00	6:00 - 23:59
Spin St: between Corporation and Parliament St's.			
Parliament St: between Parliament and 35m from Longmarket St (excluding parking garage access point)			
Plein St: between Roeland and Longmarket St's			
St. John's Rd: between Roeland and Vrede St's.			
Mostert St: between Plein and Buitenkant St's.			
Roeland St: between Plein and Buitenkant St's between Buitenkant St and Brandweer St's.	17:00-22:00	17:00-22:00	6:00 – 23:45
	None	None	17:45 – 19:30 for 35 minutes
Hope St: between Roeland and Wesley St's	None	None	6:00 – 23:45
Glynn St: between Buitenkant and Hope St's			
Wesley St: between Buitenkant and Hope St's			
Gallery Ln: whole			
Government Ave: whole			
Bouquet St: whole and parking area			
Commercial St: between Plein and Buitenkant St's.			
Church Square	None	None	6:00-23:45
Newlands – Rondebosch – Mowbray – Observatory – Salt River - Woodstock – Cape Town			
M3 (Union Ave, Rhodes Dr, de Waal Dr) inbound: Newlands Ave to Jutland Ave. including pedestrian bridges and on-ramps: UCT and Woolsack Dr Barnham Rd., use Buitenkant St (open) or Crassula Ave.	Exercise, but no closure.	Exercise, but no closure.	17:45 - 19:30 for 35 minutes
Woolsack Dr westbound: Main Rd (M4) - Rhodes Dr (M3)			
Anzio Rd: Groote Schuur Hospital to de Waal Dr (M3).			
N2 (Settlers Way, Nelson Mandela Blvd) inbound: Muizenberg off-ramp (M3) to Roodebloem Rd.			
Newlands			
Klipper Rd: Main Rd (M4) to Newlands Ave.	None	None	17:45 - 19:30 for 35 minutes
Princess Anne Ave: Newlands Ave to Union Ave.			
Newlands Ave: Dean St to Princess Anne Ave.			
Dean St westbound: Main Rd (M4) to Newlands Ave			

*** Additional Controlled Roads & Closures:**

1. Security fencing will line the route in the CBD. There will be guarded pedestrian crossing points during peak time on Plein St (Shortmarket, Spin and Barrack St's.) Pedestrians should be encouraged to make use of Buitenkant Street.
2. Company Gardens will be closed on Thursday 13 February from 06:00 to 23:59.
3. Darling St between Adderley and Buitenkant St's and Wale St between Adderley and Queen Victoria St's may be closed during the day on 13 February for security reasons.
4. Contingency closure in case of an emergency on 13 February 2020 (08h00-23h45) may include the following roads.

Barrack Street between Buitenkant and Plein Streets

Albertus Street between Buitenkant and Corporation Streets

Caledon Street between Buitenkant and Corporation Streets

Parade Street between Darling and Caledon Streets

Mostert Street between Buitenkant and Plein Streets

Buitenkant Street between Darling and Wesley / Mill Streets

Darling Street between Adderley and Canterbury Streets

Adderley Street between Strand and Bureau Streets

Longmarket Street between Buitenkant and Long Streets

Church Street between Burg and Adderley Streets

Burg Street between Wale and Longmarket Streets

Parking Restrictions – From midnight (23:59) on Monday, 10 February 2020 to 23:45 on Thursday 13 February 2020:

- Glynn and Wesley Street between Hope and Buitenkant Street.
- Buitenkant Street between Glynn and Wesley Street.
- Vrede Street between St Johns and Hope Street.

Parking Restrictions – From midnight (23:59) on Wednesday, 12 February 2020 to 23:45 on Thursday 13 February 2020:

Please note that no parked vehicles will be permitted in the following areas:

- **M3** Between Princess Ann and Philip Kgosana Drive (De Waal Drive)
- **Newlands:**
 - **Princess Anne Ave.**
 - **Klipper Road** between Main Road and M3
- **City:**
 - **CBD / Foreshore area:**
 - **Adderley St:** between Longmarket & Bureau St
 - **Wale Street:** Queen Victoria Street & Bureau Street (Both Sides)

- **Strand St:** between Adderley and Christiaan Barnard St overpass.
- **Parliament / Company Gardens area:**
 - **Church Square:** corner of Spin & Parliament St's.
 - **Roeland St:** between Brandweer & Plein St.
 - **Plein St:** between Long Market Street & Roeland St's.
 - **St. John's St:** between Roeland & Vrede St's
 - **Spin St:** between Parliament & Plein St's.
 - **Parliament St:** between Longmarket & Bureau St's.
 - **St. Mary's Cathedral Parking Area:** between Bouquet & Roeland St's.
 - **Gallery Lane.**
 - **Bouquet St.**
 - **Wesley St:** between Hope & Buitenkant St
 - **Glynn St** between Hope St & Buitenkant St
 - **Buitenkant St** between Wesley and Glynn St
 - **Queen Victoria Street:** Wale Street and Bloem St (Gardens Side)
 - **Commercial St:** between Buitenkant and Plein St.
 - **Barrack St:** between Corporation and Plein St.
 - **Mostert St:** between Corporation and Plein St.
 - **Longmarket St:** between Buitenkant and St Georges Mall
 - **Hope St:** from Roeland to Wesley Street (Both Sides)
 - **Avenue Street and Paddock Street**

Alternative Routes:

Road users are advised to use the following alternative routes to the City Bowl during the event:

1. **From the N2 (Settler's Way):** use the N1, FW de Klerk Blvd via M5 (Black River Parkway), or M7 (Jakes Gerwel Dr).
- 2- **From the M3 (Union Ave):** use the M5 (Black River Parkway) and N1 (FW de Klerk Blvd) or M4 (Main Rd), onto Victoria Rd, right onto Christiaan Barnard Rd to circle the outer CBD. Note Tennant, De Villiers is closed; no access to Roeland St; Annandale/Orange St. Use lower CBD and circle around. Unless it's for local access into the residential areas. right onto Christiaan Barnard Rd to circle the outer CBD.
3. **Outer CBD Circle Road:** Use the following ring route to/from the area of the CBD affecting you:
 - Christiaan Barnard Rd.
 - FW DE KLERK BLD.
 - Buitengracht.
 - Buitensingel St.
 - Orange St.
 - Jutland Ave.
 - Tennant St. (Controlled closure, local access only).

Public Transport: Scheduled Bus services:

MyCiTi operations will be affected as follows:

Route Deviation	Bus Stop Details	Closure
Airport – Civic (Route A01)	All stops open but route change. (Thursday 7 February only)	Thursday 13 February 17:45 – 19:00
Camps Bay – Civic (Route 106 & 107)	Groote Kerk Stop closed. Use Adderley Stop.	Thursday 13 February 17:00 – 20:00
Upper Kloof St – Adderley – Waterfront (Route 113)	Groote Kerk Stop closed. Use Adderley Stop.	

Golden Arrow Bus Service operations will be affected as follows:

The Golden Acre bus terminus will operate as per normal on Thursday 13 February 2020. Bus operations from the terminus will proceed via Lower Plein St, Strand in the event Darling St is closed to traffic. Incoming buses will divert via Russell St, Strand St to the terminus.

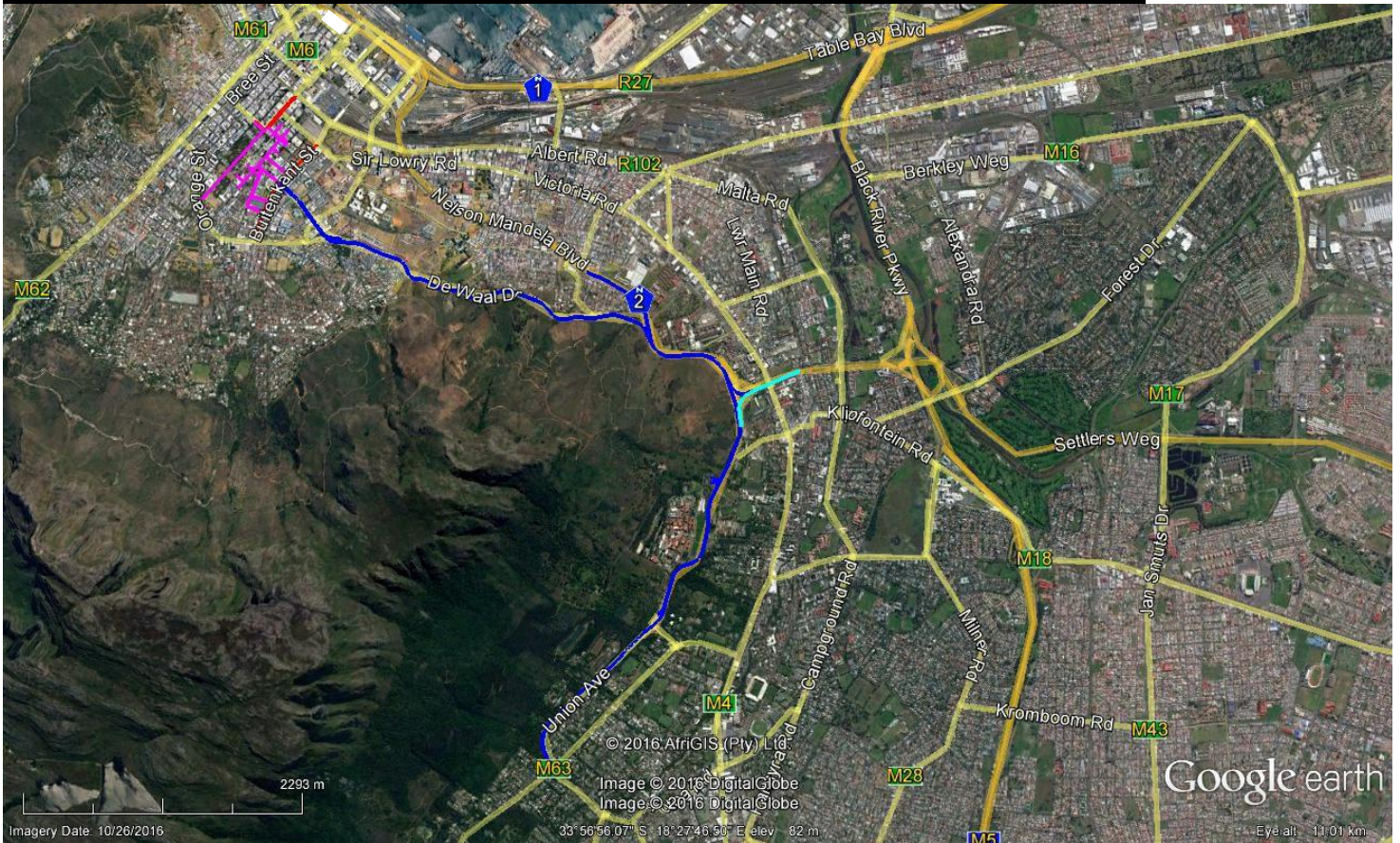
Note with this ceremonial route. Buses will operate as per normal from terminus into Darling St. In the event the Gathering on the Grand Parade becomes disruptive to traffic then exit via Strand St.

Emergencies & Enquiries:

Emergencies: Call the City's Public Emergency Call Centre; dial 107 (landline) or 021 480 7700 (cell).

Enquiries: Contact the 24/7 Transport Information Centre at 0800 65 64 63 for any updates.

Road Closures: (colour code as per table blocks) Newlands to City:



Road Closures: (colour code as per table blocks) City Bowl:

