



**Transport Management Plan - Closures, Parking Restrictions, Alternative Routes, Bus Services**

The Opening of Parliament takes place on Thursday, 7 February 2019 at 19:00. There will be rehearsals on Tuesday 5 and Wednesday 6 February 2019 at 18:00.

**Road closures for rehearsals and the event**

Affected road NB: Including intersections except where noted	Tuesday 5 February 2019	Wednesday 6 February 2019	Thursday 7 February 2019
<b>CITY / FORESHORE</b>			
<b>Wale Street:</b> between Burg and Adderley streets	18:00 – 22:00	18:00 – 22:00	06:00 – 23:45
<b>Bureau Street:</b> between Adderley and Parliament streets	18:00 – 22:00	18:00 – 22:00	6:00 – 23:59
<b>Spin Street:</b> between Corporation and Parliament streets			
<b>Parliament Street:</b> between Parliament and 35m from Longmarket Street (excluding parking garage access point)			
<b>Plein Street:</b> between Roeland and Longmarket streets			
<b>St. John's Road:</b> between Roeland and Vrede streets			
<b>Mostert Street:</b> between Plein and Buitenkant streets	18:00 – 22:00	18:00 – 22:00	6:00 – 23:45
<b>Roeland Street:</b> between Plein and Buitenkant streets			6:00 – 23:45
between Buitenkant and Brandweer streets	None	None	17:45 – 19:30 for 35 minutes
<b>Hope Street:</b> between Roeland and Wesley streets	None	None	6:00 – 23:45
<b>Glynn Street:</b> between Buitenkant and Hope streets			
<b>Wesley Street:</b> between Buitenkant and Hope streets			
<b>Gallery Lane:</b> whole			
<b>Government Avenue:</b> whole			
<b>Bouquet Street:</b> whole and parking area			
<b>Commercial Street:</b> between Plein and Buitenkant streets			
<b>Church Square</b>	None	None	6:00 – 23:45
<b>NEWLANDS / RONDEBOSCH / MOWBRAY / OBSERVATORY / SALT RIVER / WOODSTOCK / CAPE TOWN</b>			
<b>M3 (Union Avenue, Rhodes Drive, De Waal Drive) inbound:</b> Newlands to Jutland avenues, including pedestrian bridges and on-ramps: UCT and Woolsack Drive Barnham Road, use Buitenkant Street (open) or Crassula Avenue	Exercise, but no closure	Exercise, but no closure	17:45 – 19:30 for 35 minutes
<b>Woolsack Drive westbound:</b> Main Road (M4) - Rhodes Drive (M3)			
<b>Anzio Road:</b> Groote Schuur Hospital to De Waal Drive (M3).			
<b>N2 (Settlers Way, Nelson Mandela Boulevard) inbound:</b> Muizenberg off-ramp (M3) to Roodebloem Road			
<b>NEWLANDS</b>			
<b>Klipper Road:</b> Main Road (M4) to Newlands Avenue	None	None	17:45 – 19:30 for 35 minutes
<b>Princess Anne Avenue:</b> Newlands to Union avenues			
<b>Newlands Avenue:</b> Dean Street to Princess Anne Avenue			
<b>Dean Street westbound:</b> Main Road (M4) to Newlands Avenue			

**\* Additional Controlled Roads and Closures:**

1. Security fencing will line the route in the CBD. There will be guarded pedestrian crossing points during peak time on Plein Street (Shortmarket, Spin and Barrack streets). Pedestrians should be encouraged to make use of Buitenkant Street.
2. Company Gardens will be closed on Thursday 7 February from 06:00 to 23:59.
3. Darling St between Adderley and Buitenkant streets and Wale Street between Adderley and Queen Victoria streets may be closed during the day on 7 February for security reasons.
4. Contingency closure in case of an emergency on 7 February 2019 (08:00 – 23:45) may include the following roads:

**Barrack Street** between Buitenkant and Plein Streets

**Albertus Street** between Buitenkant and Corporation Streets

**Caledon Street** between Buitenkant and Corporation Streets

**Parade Street** between Darling and Caledon Streets

**Mostert Street** between Buitenkant and Plein Streets

**Buitenkant Street** between Darling and Wesley / Mill Streets

**Darling Street** between Adderley and Canterbury Streets

**Adderley Street** between Strand and Bureau Streets

**Longmarket Street** between Buitenkant and Long Streets

**Church Street** between Burg and Adderley Streets

**Burg Street** between Wale and Longmarket Streets

**Parking Restrictions – From midnight (23:59) on Wednesday, 6 February 2019 to Thursday, 7 February 2019 (23:45)**

Please note that no parked vehicles will be permitted in the following areas:

- **M3** Between Princess Ann and Philip Kgosana Drive (De Waal Drive)
- **Newlands:**
  - **Princess Anne Avenue**
  - **Klipper Road** between Main Road and M3
- **City:**
  - **CBD / Foreshore area:**
    - **Adderley Street:** between Longmarket and Bureau streets
    - **Wale Street:** Queen Victoria and Bureau Street streets (both sides)
    - **Strand St:** between Adderley and Christiaan Barnard streets overpass.
  - **Parliament / Company Gardens area:**
    - **Church Square:** Corner of Spin and Parliament streets
    - **Roeland Street:** between Brandweer and Plein streets
    - **Plein Street:** between Long Market and Roeland streets
    - **St. John's Street:** between Roeland and Vrede streets
    - **Spin Street:** between Parliament and Plein streets
    - **Parliament Street:** between Longmarket and Bureau streets
    - **St. Mary's Cathedral Parking Area:** between Bouquet and Roeland streets
    - **Gallery Lane**
    - **Bouquet Street**
    - **Wesley Street:** between Hope and Buitenkant streets
    - **Glynn Street** between Hope and Buitenkant streets
    - **Buitenkant Street** between Wesley and Glynn streets
    - **Queen Victoria Street:** Wale and Bloem streets (Gardens side)
    - **Commercial Street:** between Buitenkant and Plein streets
    - **Barrack Street:** between Corporation and Plein streets
    - **Mostert Street:** between Corporation and Plein streets
    - **Longmarket Street:** between Buitenkant and St Georges Mall
    - **Hope Streets:** from Roeland to Wesley streets (both sides)
    - **Avenue Street and Paddock Street**

## Alternative Routes:

Road users are advised to use the following **alternative routes to the City Bowl** during the event:

- From the N2 (Settler's Way):** use the N1, FW de Klerk Boulevard via M5 (Black River Parkway), or M7 (Jakes Gerwel Drive).
- From the M3 (Union Avenue):** use the M5 (Black River Parkway) and N1 (FW de Klerk Boulevard) or M4 (Main Road), onto Victoria Road, right onto Christiaan Barnard Road to circle the outer CBD. Note Tennant and De Villiers streets are closed; no access to Roeland Street; Annandale/Orange Street. Use lower CBD and circle around. Unless it's for local access into the residential areas, right onto Christiaan Barnard Road to circle the outer CBD.
- Outer CBD Circle Road: Use the following ring route to/from the area of the CBD affecting you:
  - Christiaan Barnard Road
  - FW De Klerk Boulevard
  - Buitengracht Street
  - Buitensingel Street
  - Orange Street
  - Jutland Avenue
  - Tennant Street (Controlled closure, local access only).

## Public Transport: Scheduled bus services

### MyCiTi operations will be affected as follows:

Route deviation	Bus stop details	Closure
<b>Airport – Civic (Route A01)</b>	All stops open but route change (Thursday 7 February only)	Thursday 7 February 17:45 – 19:00
<b>Khayelitsha – Civic (Route D01 and D02)</b>	All stops open but route change (Thursday 7 February only)	Thursday 7 February 17:45 – 19:00
<b>Mitchell's Plein – Civic (Route D03)</b>	All stops open but route change (Thursday 7 February only)	Thursday 7 February 17:45 – 19:00
<b>Kapteinsklip – Civic (Route D04)</b>	All stops open but route change (Thursday 7 February only)	Thursday 7 February 17:45 – 19:00
<b>Camps Bay – Civic (Route 106 and 107)</b>	Groote Kerk stop closed. Use Adderley stop.	Wednesday 6 Thursday 7
<b>Upper Kloof Street – Adderley – Waterfront (Route 113)</b>	Groote Kerk stop closed. Use Adderley stop.	February 17:00 – 20:00

### Golden Arrow Bus Service operations will be affected as follows:

The Golden Acre bus terminus will operate as per normal on Thursday 7 February 2019. Bus operations from the terminus will proceed via Lower Plein Street, Strand in the event Darling Street is closed to traffic. Incoming buses will divert via Russell Street, Strand Street to the terminus.

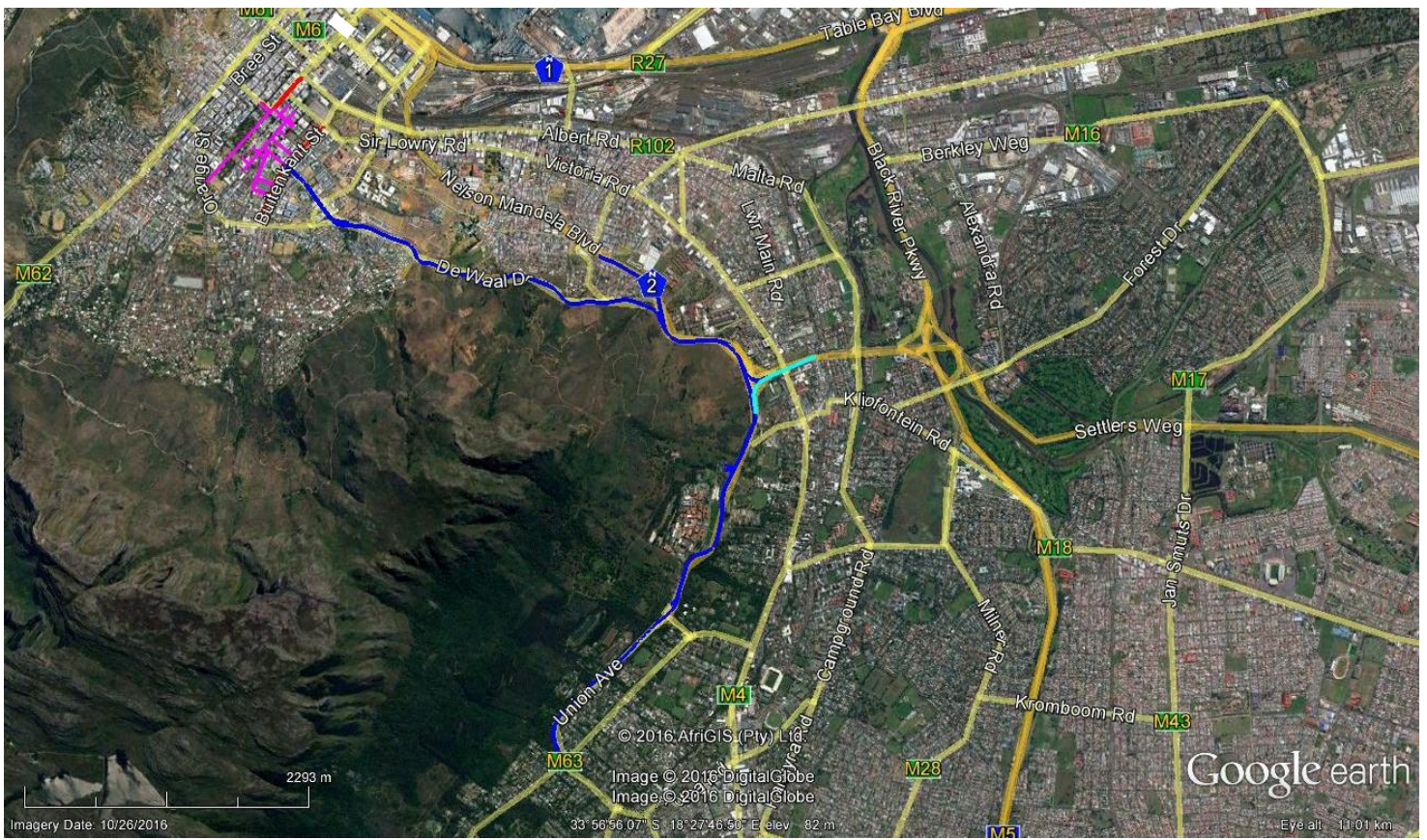
Note with this ceremonial route. Buses will operate as per normal from terminus into Darling Street. In the event the Gathering on the Grand Parade becomes disruptive to traffic then exit via Strand Street.

## Emergencies and enquiries

**Emergencies:** Call the City's Public Emergency Call Centre; dial **107** (from landline) or **021 480 7700** (from cell).

**Enquiries:** Contact the 24/7 Transport Information Centre at **0800 65 64 63** for any updates.

Road closures: Newlands to City (colour code as per table blocks)



Road closures: City Bowl (colour code as per table blocks)

