

# City of Cape Town – 2011 Census Suburb Pinelands

July 2013

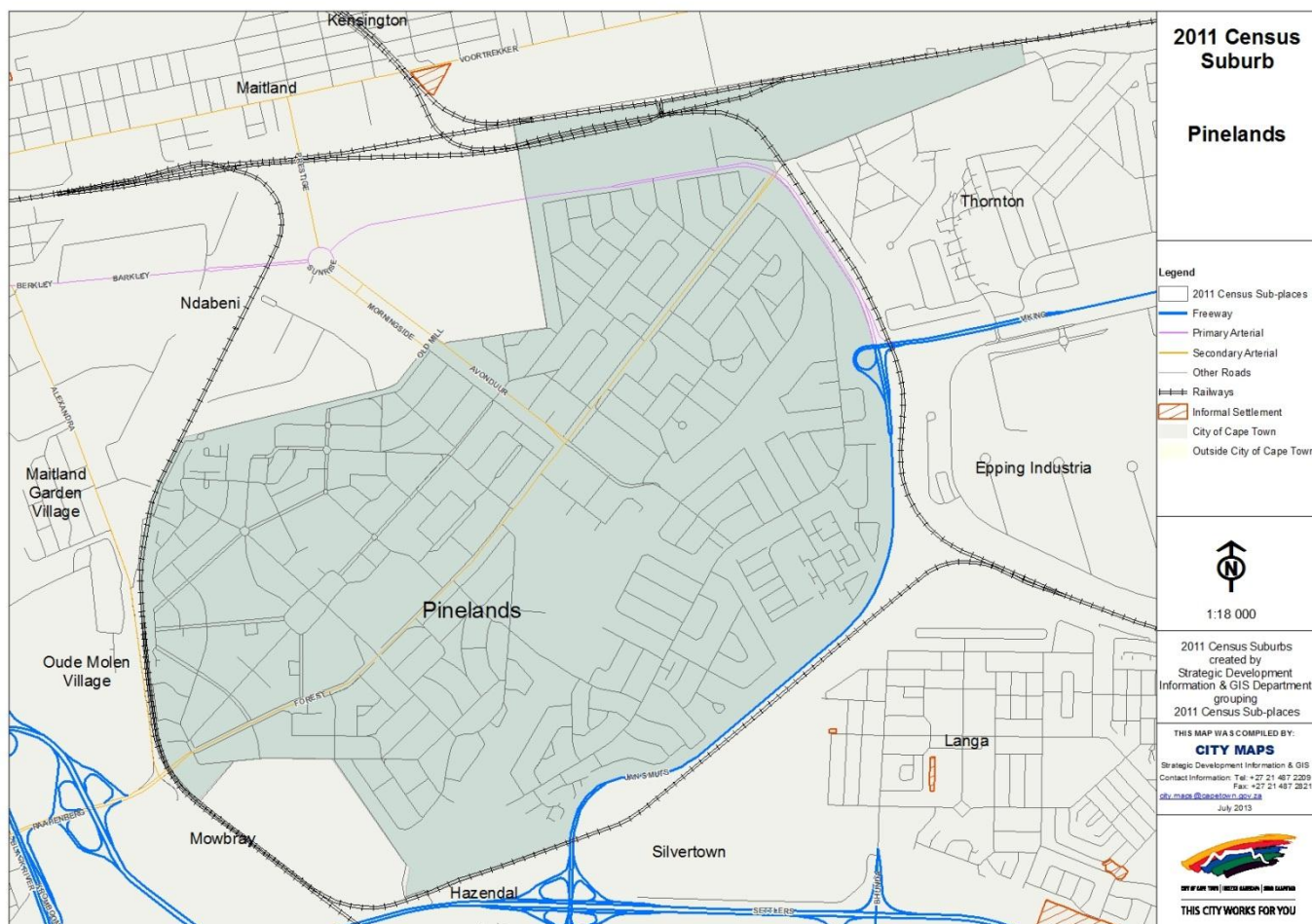
Compiled by Strategic Development Information and GIS Department (SDI&GIS), City of Cape Town  
2011 Census data supplied by Statistics South Africa  
(Based on information available at the time of compilation as released by Statistics South Africa)

The 2011 Census suburbs (190) have been created by SDI&GIS grouping the 2011 Census sub-places using GIS and December 2011 aerial photography. A sub-place is defined by Statistics South Africa “is the second (lowest) level of the place name category, namely a suburb, section or zone of an (apartheid) township, smallholdings, village, sub-village, ward or informal settlement.”

[Suburb Overview](#), [Demographic Profile](#), [Economic Profile](#), [Dwelling Profile](#), [Household Services Profile](#)

## 2011 Census Suburb Description

2011 Census suburb Pinelands includes the following sub-places: Pinelands.



**Data Notes:**

- The following databases from Statistics South Africa (SSA) software were used to extract the data for the profiles:  
Demographic Profile – Descriptive and Education databases  
Economic Profile – Labour Force and Head of Household databases  
Dwelling Profile – Dwellings database  
Household Services Profile – Household Services database
- In some Census suburbs there may be no data for households, or a very low number, as the Census suburb has population mainly living in collective living quarters (e.g. hotels, hostels, students’ residences, hospitals, prisons and other institutions) or is an industrial or commercial area. In these instances the number of households is not applicable. All tables have the data included, even if at times they are “0”, for completeness. The tables relating to population, age and labour force indicators would include the population living in these collective living quarters.
- The Census suburbs where the population is categorised as living mainly in collective living quarters or is an industrial or commercial area, the average household size has been excluded as it is not applicable. There are some Census suburbs with an average household size that have a small percentage of the population living in collective living quarters within that Census suburb, and this could artificially inflate the average household size.

**2011 Census Suburb Overview**

<b>2011 Census Suburb Pinelands</b>	<b>2011</b>
Population	14 198
Households	4 917
Average Household Size	2.89

In 2011 the population of 2011 Census suburb Pinelands was 14 198 and the number of households was 4 917. The average household size was 2.89.

A household is defined as a group of persons who live together, and provide themselves jointly with food or other essentials for living, or a single person who lives alone (Statistics South Africa).

The population and household numbers above are to be used and quoted as the official numbers for this 2011 Census suburb for 2011.

**Key results for 2011 Census Suburb Pinelands:**

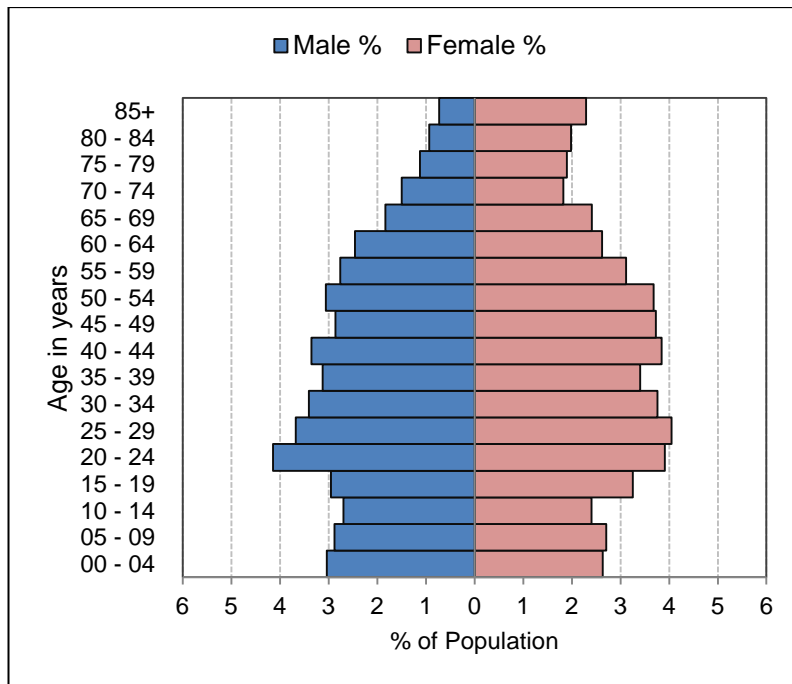
- The population is predominantly White (62%).
- 88% of those aged 20 years and older have completed Grade 12 or higher.
- 96% of the labour force (aged 15 to 64) is employed.
- 10% of households have a monthly income of R3 200 or less.
- 99.5% of households live in formal dwellings.
- 99.8% of households have access to piped water in their dwelling or inside their yard.
- 99.9% of households have access to a flush toilet connected to the public sewer system.
- 99.7% of households have their refuse removed at least once a week.
- 99.6% of households use electricity for lighting in their dwelling.

**Note:** There are small variations in the total population and the number of households in the tables which follow. These occur as Statistics South Africa had to calculate the true population to correct omissions and double counts in the enumeration process. In addition when the data is extracted using the Statistics South Africa software, it randomly rounds off all cells to a base number 3, including the totals. These variations are not significant.

[Go to top of document](#)

## Demographic Profile – 2011 Census

Pinelands Population	Male		Female		Total	
	Num	%	Num	%	Num	%
Black African	956	6.7%	961	6.8%	1 917	13.5%
Coloured	1 015	7.1%	1 127	7.9%	2 142	15.1%
Asian	346	2.4%	374	2.6%	720	5.1%
White	4 006	28.2%	4 839	34.1%	8 845	62.3%
Other	279	2.0%	295	2.1%	574	4.0%
Total	6 602	46.5%	7 596	53.5%	14 198	100.0%



Pinelands Age	Black African		Coloured		Asian		White		Other		Total	
	Num	%	Num	%	Num	%	Num	%	Num	%	Num	%
0 to 4 years	144	7.5%	179	8.4%	62	8.6%	368	4.2%	52	9.1%	805	5.7%
5 to 14 years	208	10.9%	317	14.8%	115	16.0%	776	8.8%	101	17.6%	1 517	10.7%
15 to 24 years	375	19.6%	323	15.1%	121	16.8%	1 133	12.8%	71	12.4%	2 023	14.3%
25 to 64 years	1 108	57.8%	1 202	56.1%	380	52.8%	4 525	51.2%	293	51.1%	7 508	52.9%
65 years and older	82	4.3%	120	5.6%	42	5.8%	2 043	23.1%	56	9.8%	2 343	16.5%
Total	1 917	100.0%	2 141	100.0%	720	100.0%	8 845	100.0%	573	100.0%	14 196	100.0%

Pinelands Adult Education (for all aged 20+)	Black African		Coloured		Asian		White		Other		Total	
	Num	%	Num	%	Num	%	Num	%	Num	%	Num	%
No schooling	3	0.3%	6	0.4%	6	1.3%	18	0.3%	3	0.8%	36	0.4%
Some primary	15	1.3%	27	1.9%	6	1.3%	39	0.6%	0	0.0%	87	0.9%
Completed primary	9	0.8%	12	0.8%	3	0.6%	9	0.1%	3	0.8%	36	0.4%
Some secondary	87	7.5%	174	12.0%	39	8.3%	561	8.4%	36	9.4%	897	8.8%
Grade 12	279	24.1%	453	31.3%	120	25.6%	1 935	28.9%	108	28.1%	2 895	28.5%
Higher	756	65.3%	768	53.0%	288	61.5%	4 023	60.1%	234	60.9%	6 069	59.8%
Other	9	0.8%	9	0.6%	6	1.3%	108	1.6%	0	0.0%	132	1.3%
Total	1 158	100.0%	1 449	100.0%	468	100.0%	6 693	100.0%	384	100.0%	10 152	100.0%

[Go to top of document](#)

## Economic Profile – 2011 Census

Pinelands Labour Force Indicators	Black African	Coloured	Asian	White	Other	Total
<b>Population aged 15 to 64 years</b>	<b>1 482</b>	<b>1 524</b>	<b>501</b>	<b>5 658</b>	<b>366</b>	<b>9 531</b>
<b>Labour Force</b>	<b>924</b>	<b>1 131</b>	<b>315</b>	<b>4 131</b>	<b>237</b>	<b>6 738</b>
Employed	864	1 077	312	3 987	219	6 459
Unemployed	60	54	3	144	18	279
<b>Not Economically Active</b>	<b>558</b>	<b>393</b>	<b>186</b>	<b>1 527</b>	<b>129</b>	<b>2 793</b>
Discouraged Work-seekers	6	0	3	30	0	39
Other not economically active	552	393	183	1 497	129	2 754
<b>Rates %</b>						
Unemployment rate	6.49%	4.77%	0.95%	3.49%	7.59%	4.14%
Labour absorption rate	58.30%	70.67%	62.28%	70.47%	59.84%	67.77%
Labour Force participation rate	62.35%	74.21%	62.87%	73.01%	64.75%	70.70%

### Definitions:

**Unemployment rate** is the proportion of the labour force that is unemployed.

The **labour absorption rate** is the proportion of working age (15 to 64 years) population that is employed.

The **labour force participation rate** is the proportion of the working age population that is either employed or unemployed.

**Note:** Based on available data as supplied by Statistics South Africa, the people categorised as living in collective living quarters are included in the "Other not economically active" category.

Pinelands Monthly Household Income	Black African		Coloured		Asian		White		Other		Total	
	Num	%	Num	%	Num	%	Num	%	Num	%	Num	%
No income	27	4.5%	30	4.7%	12	5.9%	141	4.2%	9	7.1%	219	4.4%
R 1 - R 1 600	12	2.0%	18	2.8%	6	2.9%	96	2.9%	3	2.4%	135	2.7%
R 1 601 - R 3 200	39	6.5%	21	3.3%	3	1.5%	93	2.8%	3	2.4%	159	3.2%
R 3 201 - R 6 400	45	7.5%	18	2.8%	9	4.4%	213	6.3%	6	4.8%	291	5.9%
R 6 401 - R 12 800	81	13.5%	51	8.0%	21	10.3%	471	14.0%	18	14.3%	642	13.0%
R 12 801 - R 25 600	159	26.5%	135	21.2%	36	17.6%	762	22.7%	33	26.2%	1 125	22.8%
R 25 601 - R 51 200	132	22.0%	177	27.8%	54	26.5%	912	27.1%	27	21.4%	1 302	26.4%
R 51 201 - R 102 400	63	10.5%	132	20.8%	39	19.1%	489	14.6%	18	14.3%	741	15.0%
R 102 401 or more	42	7.0%	54	8.5%	24	11.8%	180	5.4%	9	7.1%	309	6.3%
Unspecified	0	0.0%	0	0.0%	0	0.0%	3	0.1%	0	0.0%	3	0.1%
<b>Total</b>	<b>600</b>	<b>100.0%</b>	<b>636</b>	<b>100.0%</b>	<b>204</b>	<b>100.0%</b>	<b>3 360</b>	<b>100.0%</b>	<b>126</b>	<b>100.0%</b>	<b>4 926</b>	<b>100.0%</b>

[Go to top of document](#)

## Dwelling Profile – 2011 Census

Pinelands Type of Dwelling	Black African		Coloured		Asian		White		Other		Total	
	Num	%	Num	%	Num	%	Num	%	Num	%	Num	%
Formal Dwelling	598	99.7%	625	99.2%	198	100.0%	3 343	99.5%	127	99.2%	4 891	99.5%
Informal dwelling / shack in backyard	2	0.3%	0	0.0%	0	0.0%	0	0.0%	0	0.0%	2	0.0%
Informal dwelling / shack NOT in backyard	0	0.0%	0	0.0%	0	0.0%	2	0.1%	0	0.0%	2	0.0%
Other	0	0.0%	5	0.8%	0	0.0%	14	0.4%	1	0.8%	20	0.4%
<b>Total</b>	<b>600</b>	<b>100.0%</b>	<b>630</b>	<b>100.0%</b>	<b>198</b>	<b>100.0%</b>	<b>3 359</b>	<b>100.0%</b>	<b>128</b>	<b>100.0%</b>	<b>4 915</b>	<b>100.0%</b>

Pinelands Tenure Status	Black African		Coloured		Asian		White		Other		Total	
	Num	%	Num	%	Num	%	Num	%	Num	%	Num	%
Owned and fully paid off	59	9.8%	81	12.8%	24	12.2%	1 346	40.1%	40	31.0%	1 550	31.5%
Owned but not yet paid off	143	23.9%	286	45.3%	92	46.7%	1 251	37.2%	49	38.0%	1 821	37.0%
Rented	376	62.8%	241	38.2%	76	38.6%	701	20.9%	33	25.6%	1 427	29.0%
Occupied rent-free	18	3.0%	16	2.5%	4	2.0%	26	0.8%	4	3.1%	68	1.4%
Other	3	0.5%	7	1.1%	1	0.5%	35	1.0%	3	2.3%	49	1.0%
<b>Total</b>	<b>599</b>	<b>100.0%</b>	<b>631</b>	<b>100.0%</b>	<b>197</b>	<b>100.0%</b>	<b>3 359</b>	<b>100.0%</b>	<b>129</b>	<b>100.0%</b>	<b>4 915</b>	<b>100.0%</b>

[Go to top of document](#)

## Household Services Profile – 2011 Census

Pinelands Access to Piped Water	Black African		Coloured		Asian		White		Other		Total	
	Num	%	Num	%	Num	%	Num	%	Num	%	Num	%
Piped water inside dwelling	594	99.0%	627	99.5%	195	100.0%	3 348	99.7%	126	100.0%	4 890	99.6%
Piped water inside yard	6	1.0%	0	0.0%	0	0.0%	3	0.1%	0	0.0%	9	0.2%
Piped water outside yard: < 200m	0	0.0%	0	0.0%	0	0.0%	0	0.0%	0	0.0%	0	0.0%
Piped water outside yard: > 200m	0	0.0%	0	0.0%	0	0.0%	0	0.0%	0	0.0%	0	0.0%
No access to piped water	0	0.0%	3	0.5%	0	0.0%	6	0.2%	0	0.0%	9	0.2%
<b>Total</b>	<b>600</b>	<b>100.0%</b>	<b>630</b>	<b>100.0%</b>	<b>195</b>	<b>100.0%</b>	<b>3 357</b>	<b>100.0%</b>	<b>126</b>	<b>100.0%</b>	<b>4 908</b>	<b>100.0%</b>

Pinelands Toilet Facility	Black African		Coloured		Asian		White		Other		Total	
	Num	%	Num	%	Num	%	Num	%	Num	%	Num	%
Flush toilet (connected to sewerage system)	594	99.5%	630	100.0%	198	100.0%	3 357	100.0%	129	100.0%	4 908	99.9%
Flush toilet (with septic tank)	0	0.0%	0	0.0%	0	0.0%	0	0.0%	0	0.0%	0	0.0%
Chemical toilet	0	0.0%	0	0.0%	0	0.0%	0	0.0%	0	0.0%	0	0.0%
Pit toilet with ventilation (VIP)	0	0.0%	0	0.0%	0	0.0%	0	0.0%	0	0.0%	0	0.0%
Pit toilet without ventilation	0	0.0%	0	0.0%	0	0.0%	0	0.0%	0	0.0%	0	0.0%
Bucket toilet	0	0.0%	0	0.0%	0	0.0%	0	0.0%	0	0.0%	0	0.0%
Other	0	0.0%	0	0.0%	0	0.0%	0	0.0%	0	0.0%	0	0.0%
None	3	0.5%	0	0.0%	0	0.0%	0	0.0%	0	0.0%	3	0.1%
<b>Total</b>	<b>597</b>	<b>100.0%</b>	<b>630</b>	<b>100.0%</b>	<b>198</b>	<b>100.0%</b>	<b>3 357</b>	<b>100.0%</b>	<b>129</b>	<b>100.0%</b>	<b>4 911</b>	<b>100.0%</b>

Pinelands Refuse Disposal	Black African		Coloured		Asian		White		Other		Total	
	Num	%	Num	%	Num	%	Num	%	Num	%	Num	%
Removed by local authority/private company at least once a week	597	100.0%	630	100.0%	198	98.5%	3 351	99.7%	126	97.7%	4 902	99.7%
Removed by local authority/private company less often	0	0.0%	0	0.0%	3	1.5%	6	0.2%	0	0.0%	9	0.2%
Communal refuse dump	0	0.0%	0	0.0%	0	0.0%	0	0.0%	3	2.3%	3	0.1%
Own refuse dump	0	0.0%	0	0.0%	0	0.0%	0	0.0%	0	0.0%	0	0.0%
No rubbish disposal	0	0.0%	0	0.0%	0	0.0%	0	0.0%	0	0.0%	0	0.0%
Other	0	0.0%	0	0.0%	0	0.0%	3	0.1%	0	0.0%	3	0.1%
<b>Total</b>	<b>597</b>	<b>100.0%</b>	<b>630</b>	<b>100.0%</b>	<b>201</b>	<b>100.0%</b>	<b>3 360</b>	<b>100.0%</b>	<b>129</b>	<b>100.0%</b>	<b>4 917</b>	<b>100.0%</b>

[Go to top of document](#)

## Household Services Profile continued – 2011 Census

Pinelands Energy used for Lighting	Black African		Coloured		Asian		White		Other		Total	
	Num	%	Num	%	Num	%	Num	%	Num	%	Num	%
Electricity	594	100.0%	624	99.0%	198	100.0%	3 345	99.6%	126	97.7%	4 887	99.6%
Gas	0	0.0%	0	0.0%	0	0.0%	3	0.1%	0	0.0%	3	0.1%
Paraffin	0	0.0%	0	0.0%	0	0.0%	0	0.0%	0	0.0%	0	0.0%
Candles	0	0.0%	3	0.5%	0	0.0%	0	0.0%	0	0.0%	3	0.1%
Solar	0	0.0%	0	0.0%	0	0.0%	9	0.3%	3	2.3%	12	0.2%
None	0	0.0%	3	0.5%	0	0.0%	0	0.0%	0	0.0%	3	0.1%
<b>Total</b>	<b>594</b>	<b>100.0%</b>	<b>630</b>	<b>100.0%</b>	<b>198</b>	<b>100.0%</b>	<b>3 357</b>	<b>100.0%</b>	<b>129</b>	<b>100.0%</b>	<b>4 908</b>	<b>100.0%</b>

Pinelands Energy used for Cooking	Black African		Coloured		Asian		White		Other		Total	
	Num	%	Num	%	Num	%	Num	%	Num	%	Num	%
Electricity	549	92.0%	546	87.1%	159	79.1%	2 889	86.1%	105	83.3%	4 248	86.6%
Gas	39	6.5%	78	12.4%	39	19.4%	450	13.4%	21	16.7%	627	12.8%
Paraffin	0	0.0%	0	0.0%	0	0.0%	0	0.0%	0	0.0%	0	0.0%
Wood	0	0.0%	0	0.0%	0	0.0%	0	0.0%	0	0.0%	0	0.0%
Coal	0	0.0%	0	0.0%	0	0.0%	3	0.1%	0	0.0%	3	0.1%
Animal dung	0	0.0%	0	0.0%	0	0.0%	0	0.0%	0	0.0%	0	0.0%
Solar	0	0.0%	0	0.0%	3	1.5%	6	0.2%	0	0.0%	9	0.2%
Other	6	1.0%	0	0.0%	0	0.0%	6	0.2%	0	0.0%	12	0.2%
None	3	0.5%	3	0.5%	0	0.0%	3	0.1%	0	0.0%	9	0.2%
<b>Total</b>	<b>597</b>	<b>100.0%</b>	<b>627</b>	<b>100.0%</b>	<b>201</b>	<b>100.0%</b>	<b>3 357</b>	<b>100.0%</b>	<b>126</b>	<b>100.0%</b>	<b>4 908</b>	<b>100.0%</b>

Pinelands Energy used for Heating	Black African		Coloured		Asian		White		Other		Total	
	Num	%	Num	%	Num	%	Num	%	Num	%	Num	%
Electricity	504	84.0%	519	82.8%	165	83.3%	2 517	75.0%	90	69.8%	3 795	77.3%
Gas	42	7.0%	57	9.1%	15	7.6%	399	11.9%	12	9.3%	525	10.7%
Paraffin	3	0.5%	0	0.0%	0	0.0%	3	0.1%	0	0.0%	6	0.1%
Wood	9	1.5%	9	1.4%	6	3.0%	168	5.0%	12	9.3%	204	4.2%
Coal	3	0.5%	0	0.0%	0	0.0%	24	0.7%	0	0.0%	27	0.5%
Animal dung	0	0.0%	0	0.0%	0	0.0%	0	0.0%	0	0.0%	0	0.0%
Solar	3	0.5%	3	0.5%	0	0.0%	45	1.3%	3	2.3%	54	1.1%
Other	0	0.0%	0	0.0%	0	0.0%	0	0.0%	0	0.0%	0	0.0%
None	36	6.0%	39	6.2%	12	6.1%	201	6.0%	12	9.3%	300	6.1%
<b>Total</b>	<b>600</b>	<b>100.0%</b>	<b>627</b>	<b>100.0%</b>	<b>198</b>	<b>100.0%</b>	<b>3 357</b>	<b>100.0%</b>	<b>129</b>	<b>100.0%</b>	<b>4 911</b>	<b>100.0%</b>

[Go to top of document](#)