

State Of the Nation Address / Opening of Parliament – 16 February 2018
Transport Management Plan - Closures, Parking Restrictions, Alternative Routes, Bus Services

The Opening of Parliament takes place on Friday, 16 February 2018 at 19:00.

Road Closures: for rehearsals and the event.

Affected Road NB: Including intersections except where noted.	None	None	Friday 16 February 2018
City and Foreshore			
Wale St: between Burg and Adderley St's.	None	None	06:00-23:45
Bureau St: between Adderley and Parliament St's.			6:00 – 23:59
Spin St: between Corporation and Parliament St's.			
Parliament St: between Parliament and 35m from Longmarket St (excluding parking garage access point)			
Plein St: between Roeland and Longmarket St's			
St. John's Rd: between Roeland and Vrede St's.			
Mostert St: between Plein and Buitenkant St's.			
Roeland St: between Plein and Buitenkant St's between Buitenkant St and Brandweer St's.	None	None	6:00 – 23:45
	None	None	17:45 – 19:15 for 90 minutes
Hope St: between Roeland and Wesley St's			6:00 – 23:45
Glynn St: between Buitenkant and Hope St's			
Wesley St: between Buitenkant and Hope St's			
Gallery Ln: whole			
Government Ave: whole			
Bouquet St: whole and parking area			
Commercial St: between Plein and Buitenkant St's.			
Church Sqaure			6:00-23:45
Newlands – Rondebosch – Mowbray – Observatory – Salt River - Woodstock – Cape Town			
M3 (Union Ave, Rhodes Dr, de Waal Dr) inbound: Newlands Ave to Jutland Ave. including pedestrian bridges and on-ramps: UCT and Woolsack Dr Barnham Rd., use Buitenkant St (open) or Crassula Ave.	None	None	17:45 – 19:15 for 90 minutes
Woolsack Dr westbound: Main Rd (M4) - Rhodes Dr (M3)			
Anzio Rd: Groote Schuur Hospital to de Waal Dr (M3).			
N2 (Settlers Way, Nelson Mandela Blvd) inbound: Muizenberg off-ramp (M3) to Roodebloem Rd.			
Newlands			
Klipper Rd: Main Rd (M4) to Newlands Ave.	None	None	17:45 – 19:15 for 90 minutes
Princess Anne Ave: Newlands Ave to Union Ave.			
Newlands Ave: Dean St to Princess Anne Ave.			
Dean St westbound: Main Rd (M4) to Newlands Ave			

*** Additional Controlled Roads & Closures:**

1. Security fencing will line the route in the CBD. There will be guarded pedestrian crossing points during peak time on Adderley St (Castle and Shortmarket St's.), Plein St (Shortmarket, Spin and Barrack St's.)
2. Company Gardens will be closed on Friday, 16 February 2018 from 06:00 to 23:59.
3. Darling St between Adderley and Buitenkant St's and Wale St between Adderley and Queen Victoria St's may be closed during the day of Friday, 16 February 2018 for security reasons.
4. Contingency closure in case of an emergency on 16 February 2018 (08h00-23h45) will include the following roads.

Barrack Street between Buitenkant and Plein Street

Albertus Street between Buitenkant and Corporation Street

Caledon Street between Buitenkant and Corporation Street

Parade Street between Darling and Caledon Street

Mostert Street between Buitenkant and Plein Street

Buitenkant Street between Darling and Wesley / Mill Street

Darling Street between Adderley Street and Canterbury Street

Adderley Street between Strand & Bureau Street

Longmarket Street between Buitenkant and St Georges Mall / Burg Street / Long Street

Church Street between Burg St and Adderley Street

Burg Street between Wale Street and Longmarket Street

Parking Restrictions – From midnight (00:00) on Friday, 16 February 2018 to 23:45:

Please note that no parked vehicles will be permitted in the following areas:

- **Klipper Road** between Main Road and M3
- **M3** Between Princess Ann and Philip Kgosana Drive (De Wall Drive)
- **Newlands:**
 - **Princess Anne Ave.**
- **City:**
 - **CBD / Foreshore area:**
 - **Adderley St:** between Strand and Wale St's. Longmarket & Bureau St
 - **Wale Street:** Queen Victoria Street & Bureau Street (Both Sides)
 - **Darling St:** outbound between Plein and Buitenkant St's, reserved between:
 - Plein and Parade for taxis from Plein St
 - Parade and Buitenkant for Parliamentary buses
 - **Strand St:** between Adderley and Christiaan Barnard St overpass.
 - **Parliament / Company Gardens area:**
 - **Church Square:** corner of Spin & Parliament St's.
 - **Roeland St:** between Brandweer & Plein St.
 - **Plein St:** between Long Market Street & Roeland St's.
 - **St. John's St:** between Roeland & Orange St's
 - **Spin St:** between Parliament & Plein St's.

- **Parliament St:** between Longmarket & Bureau St's.
- **Hatfield St:** between Roeland & Orange St's.
- **St. Mary's Cathedral Parking Area:** between Bouquet & Roeland St's.
- **Gallery Lane.**
- **Bouquet St.**
- **Queen Victoria Street:** Wale Street and Orange Street (Both Sides)
- **Commercial St:** between Buitenkant and Plein St.
- **Barrack St:** between Buitenkant and Plein St.
- **Albertus St:** between Buitenkant and Corporation St.
- **Caledon St:** between Buitenkant and Corporation St.
- **Mostert St:** between Buitenkant and Plein St.
- **Longmarket St:** between Buitenkant and St Georges Mall
- **Hope St:** from Roeland to Wesley Street
- **Avenue Street and Paddock Street**

Alternative Routes:

Road users are advised to use the following alternative routes to the City Bowl during the event:

1. **From the N2 (Settler's Way):** use the N1, FW de Klerk Blvd via M5 (Black River Parkway), or M7 (Jakes Gerwel Dr).
2. **From the M3 (Union Ave):** use the M5 (Black River Parkway) and N1 (FW de Klerk Blvd) or M4 (Main Rd), onto Victoria Rd up to the Good Hope Centre. Thereafter left onto Tennant Rd or right onto Christiaan Barnard Rd to circle the outer CBD.
3. **Outer CBD Circle Road:** Use the following ring route to/from the area of the CBD affecting you:
 - Christiaan Barnard Rd.
 - Table Bay Blvd.
 - Buitengracht.
 - Buitensingel St.
 - Orange St.
 - Jutland Ave.
 - Tennant St.

Public Transport: Scheduled Bus services:

MyCiTi operations will be affected as follows:

Route Deviation	Bus Stop Details	Closure
Airport – Civic (A01)	All stops open but route change. (Friday, 16 February only)	Friday, 16 February 2018 16:00 – 20:00
Salt River – Civic (102)	Darling and Castle St Stops closed. Use Civic Adderley or Hanover St Stops	Friday, 16 February 2018 16:00 – 20:00
Oranjezicht-Gardens – Civic (103)	Darling Stop closed. Use Civic or Adderley Stops	
Sea Point - Civic (105)	All stops open, but minor route change.	
Waterfront-Civic-Camps Bay (106 and 107)	Groote Kerk Stop closed. Use Longmarket (in Long St) or Church (in Loop St) Stops	Friday, 16 February 2018 16:00 – 20:00

Golden Arrow Bus Service operations will be affected as follows:

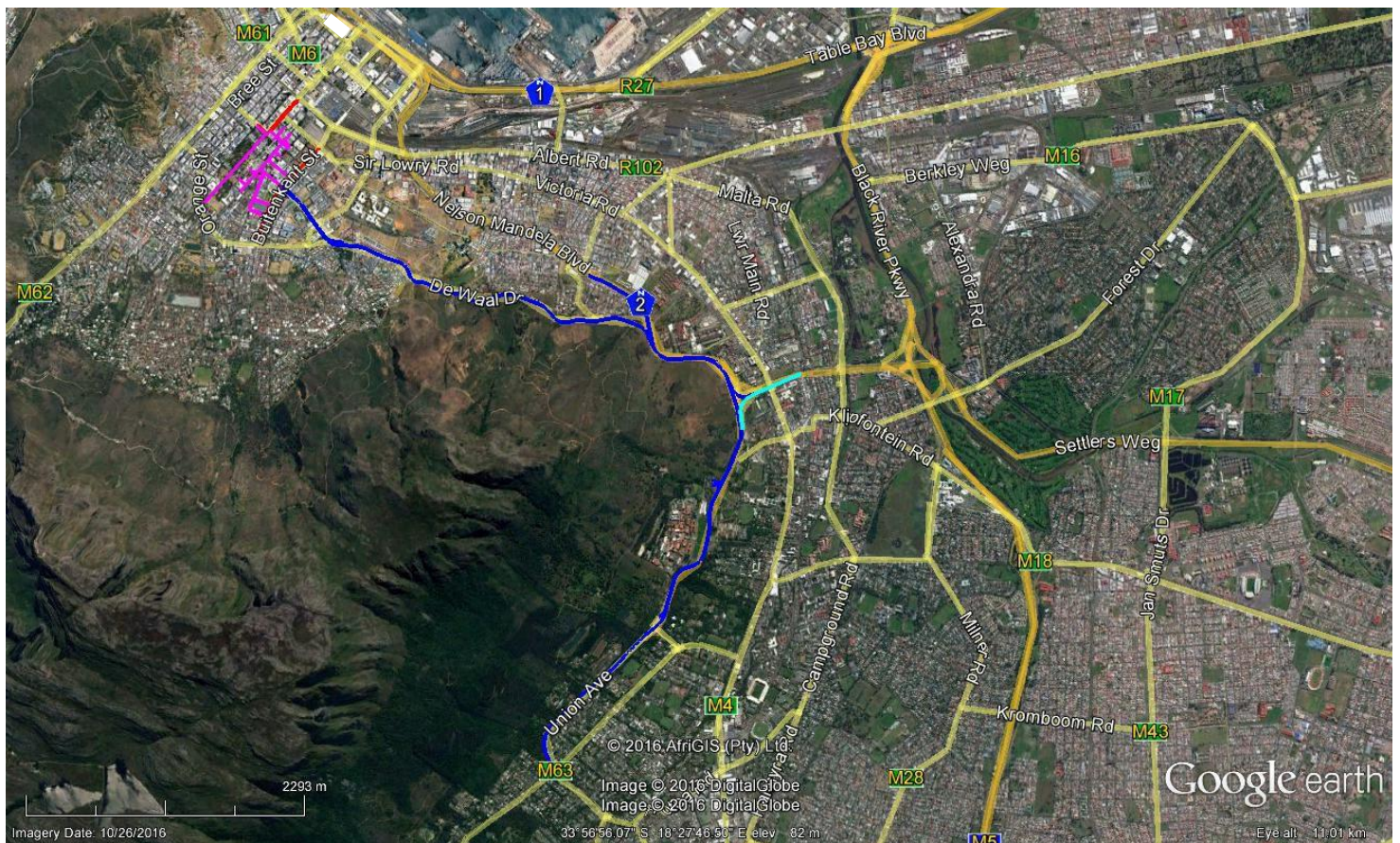
The Golden Acre bus terminus exit into Plein St will be closed at 18:00 on Friday, 16 February 2018 . Bus operations will move to Strand St between Castle St and Christiaan Barnard St overpass until 20:00.

Emergencies & Enquiries:

Emergencies: Call the City's Public Emergency Call Centre; dial 107 (landline) or 021 480 7700 (cell).

Enquiries: Contact the 24/7 Transport Information Centre at 0800 65 64 63 for any updates.

Road Closures: (colour code as per table blocks) Newlands to City:



Road Closures: (colour code as per table blocks) City Bowl:

