

- | | | |
|---|---|--|
| <ul style="list-style-type: none"> ● Accommodation and food service activities ● Administrative and support service activities ● Agriculture, forestry and fishing ● Arts, entertainment and recreation ● Construction ● Education ● Electricity, gas, steam and air-conditioning supply ● Financial and insurance activities ● Human health and social work activities ● Information and communication ● Manufacturing ● No activity | <ul style="list-style-type: none"> ● Other service activities ● Professional, scientific and technical service activities ● Public administration and defence, compulsory social security service activities ● Real estate activities ● Transportation and storage ● Unattainable ● Vacant unit ● Water reserve ● Water supply, sewerage, waste management and remediation activities ● Wholesale and retail trade, repair of motor vehicles and motorcycles ● IRT bus stops | <ul style="list-style-type: none"> ■ Road reserve ■ Under construction ■ Vacant land ■ Private residence ■ Suburbs ■ Land parcel ■ Greenbelt ■ Open space ■ Vacant building ■ Wetlands |
|---|---|--|



CITY OF CAPE TOWN
ISIXEKO SASEKAPA
STAD KAAPSTAD



INVEST CAPE TOWN
 COLLABORATE | ENABLE | PROMOTE

For more information on this industrial area contact:
 Economic.Research@capetown.gov.za

Produced by Enterprise and Investment and
 Organisational, Policy and Planning Departments:
 Directorate of the Mayor



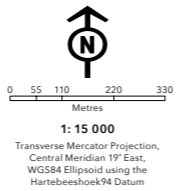
Athlone Industria | 2017



THIS MAP WAS COMPILED BY:
CITY MAPS
 Development Information and GIS
 Tel: +27 21 487 2711
 Fax: +27 21 487 2821
 city.maps@capetown.gov.za

Please note:

- Business names, economic activity and contact details were collected through primary data collection.
- Business contact details were verified directly from the business' website.
- In the event that the name or economic activity of a business could not be identified during primary data collection and it does not have an active website or contact details available to confirm business details, it has been listed as unattainable.



INDUSTRIAL SURVEY
ATHLONE INDUSTRIA

Making progress possible. Together.

ATHLONE INDUSTRIA AT A GLANCE

The Industrial node Athlone Industria is one of five Metro-South East Corridor (MSEC) industrial areas in the metropolitan area of the City of Cape Town, while the others are Epping Industria, Airport Industria and the Philippi North Industrial area. Athlone Industria is situated on the outskirts of the Athlone city centre, situated approximately 16 km east from the City of Cape Town, on the Cape Flats. The N2 highway is right next to Athlone Industria which would allow business owners direct access to the national road. Athlone Industria is separated by Jakes Gerwel Drive to form Athlone Industria 1 in Newfields area and Athlone Industria 2 in Hatton or Gatesville area, but is collectively referred to as Athlone Industria.

Athlone Industria is mapped across 138 land parcels of which 94% or 126 of these land parcels are occupied by economic activity and the remaining 6% or 12 of these land parcels are not.

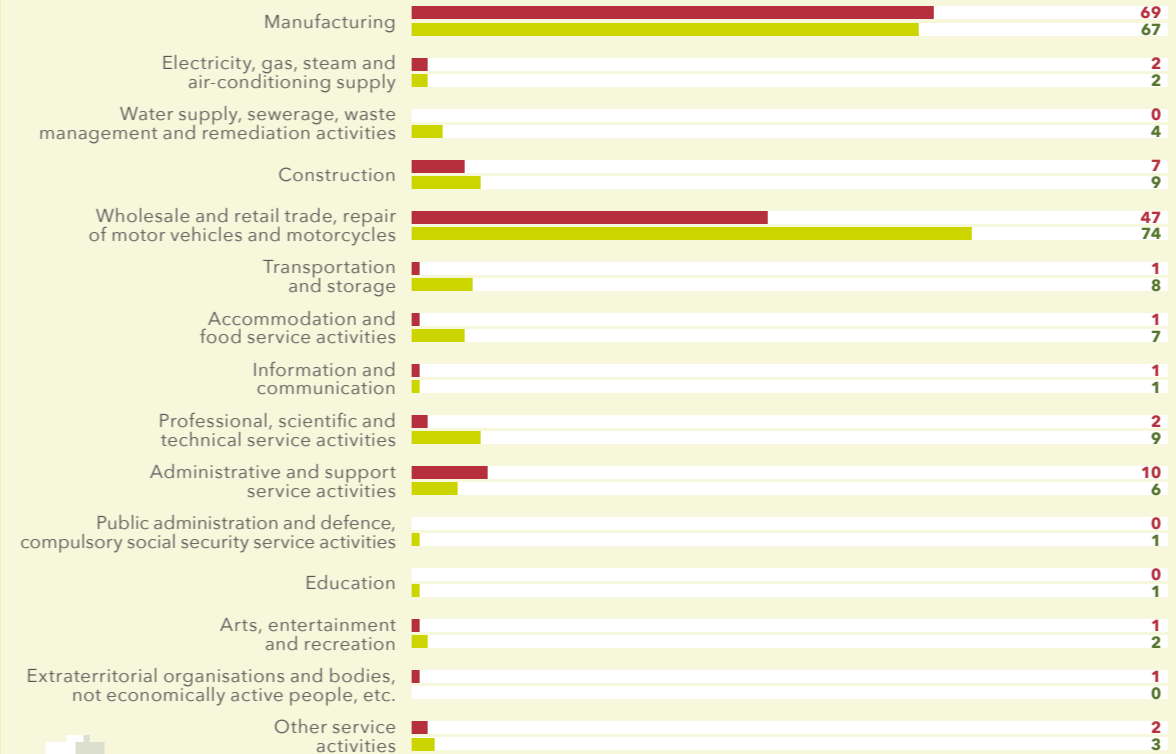
The 126 land parcels that are economically active in the Athlone Industrial area hosts 220 businesses. Of the 220 businesses, 194 businesses' economic activity could be identified while 26 businesses' economic activity could not.

138 LAND PARCELS **220 BUSINESSES**



TREND IN ECONOMIC ACTIVITY BETWEEN 2014 AND 2016

NO. OF BUSINESSES: 2014 VS 2016



Industrial area boundaries are subject to change over time so caution must be exercised in interpreting increases or decreases in the number of businesses per sector over the period.

Administrative and support service activities

DECREASED BY 4

INCREASED BY 27

Wholesale and retail trade, repair of motor vehicles and motorcycles

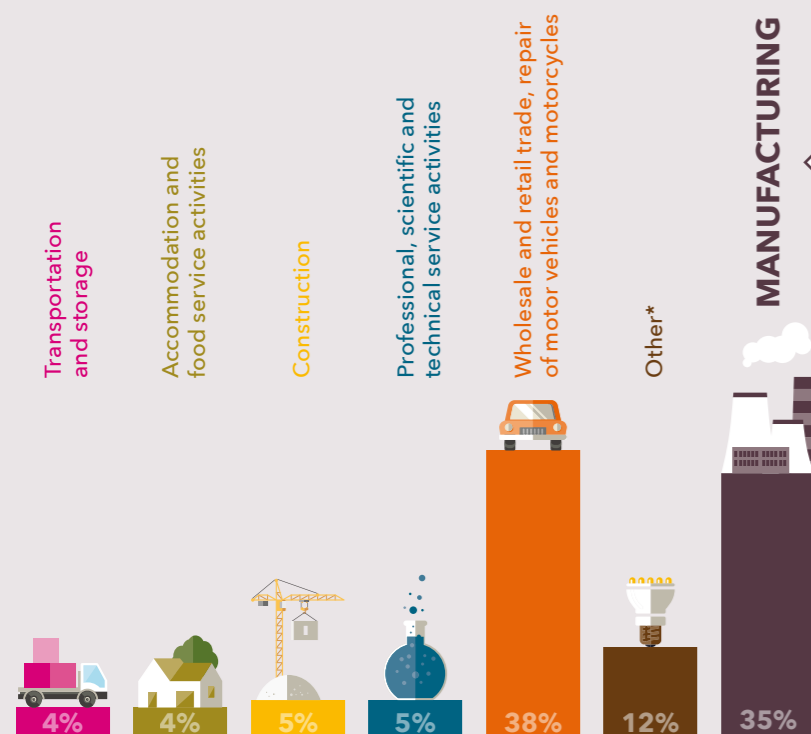
Manufacturing

DECREASED BY 2

INCREASED BY 7

Professional, scientific and technical service activities

ECONOMIC ACTIVITY OF BUSINESSES



Number of manufacturing businesses per division

Basic metals	2
Beverages	1
Chemicals and chemical products	4
Fabricated metal products, excluding machinery and equipment	12
Food products	14
Furniture	1
Machinery and equipment not classified elsewhere	4
Motor vehicles, trailers and semi-trailers	2
Other manufacturing	2
Other non-metallic mineral products	3
Other transport equipment	1
Paper and paper products	4
Printing and reproduction of recorded media	3
Repair and installation of machinery and equipment	2
Rubber and plastic products	6
Textiles	1
Wearing apparel	4
Wood and product of wood and cork, except furniture; manufacture of articles of straw and plaiting materials	1

*Administrative and support service activities; Arts, entertainment and recreation; Education; Electricity, gas, steam and air-conditioning supply; Information and communication; Other service activities; Public administration and defence, compulsory social security service activities; Water supply, sewerage, waste management and remediation activities;

PROPERTIES AVAILABLE

4

VACANT LAND PARCELS

RANGE OF SQM LAND:

7 000 m² - 9 000 m²

LAND PARCEL SIZE RANGE:



4

VACANT BUILDINGS

RANGE OF SQM LAND*:

9 000 m² - 12 000 m²

LAND PARCEL SIZE RANGE:



● 0 - 4 999 m² ● 5 000 - 9 999 m² ● 10 000 - 49 999 m² ● 50 000 - 99 000 m² ● 100 000+ m²

*sqm of land parcel on which the business sits.