

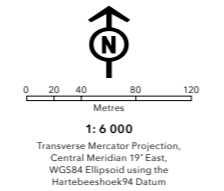
- | | | |
|---|---|--|
| <ul style="list-style-type: none"> ● Accommodation and food service activities ● Administrative and support service activities ● Agriculture, forestry and fishing ● Arts, entertainment and recreation ● Construction ● Education ● Electricity, gas, steam and air-conditioning supply ● Financial and insurance activities ● Human health and social work activities ● Information and communication ● Manufacturing ● No activity | <ul style="list-style-type: none"> ● Other service activities ● Professional, scientific and technical service activities ● Public administration and defence, compulsory social security service activities ● Real estate activities ● Transportation and storage ● Unattainable ● Vacant unit ● Water reserve ● Water supply, sewerage, waste management and remediation activities ● Wholesale and retail trade, repair of motor vehicles and motorcycles ● IRT bus stops | <ul style="list-style-type: none"> ■ Road reserve ■ Under construction ■ Vacant land ■ Private residence ■ Suburbs ■ Land parcel ■ Greenbelt ■ Open space ■ Vacant building ■ Wetlands |
|---|---|--|



THIS MAP WAS COMPILED BY:
CITY MAPS
Development Information and GIS
Tel: +27 21 487 2711
Fax: +27 21 487 2821
city.maps@capetown.gov.za

Please note:

- Business names, economic activity and contact details were collected through primary data collection.
- Business contact details were verified directly from the business' website.
- In the event that the name or economic activity of a business could not be identified during primary data collection and it does not have an active website or contact details available to confirm business details, it has been listed as unattainable.



INDUSTRIAL SURVEY
ELFINDALE
INDUSTRIA



CITY OF CAPE TOWN
ISIXEKO SASEKAPA
STAD KAAPSTAD



For more information on this industrial area contact:
Economic.Research@capetown.gov.za

Produced by Enterprise and Investment and
Organisational, Policy and Planning Departments:
Directorate of the Mayor



Elfindale Industria | 2017

Making progress possible. Together.

ELFINDALE INDUSTRIA AT A GLANCE

Elfindale Industria, the small industrial node located 19 km from the Cape Town CBD, is considered one of the safest industrial areas in the City of Cape Town municipality.

This industrial area is mapped across 83 land parcels, 82% of which is occupied with economically active businesses and 18% that is not economically active.

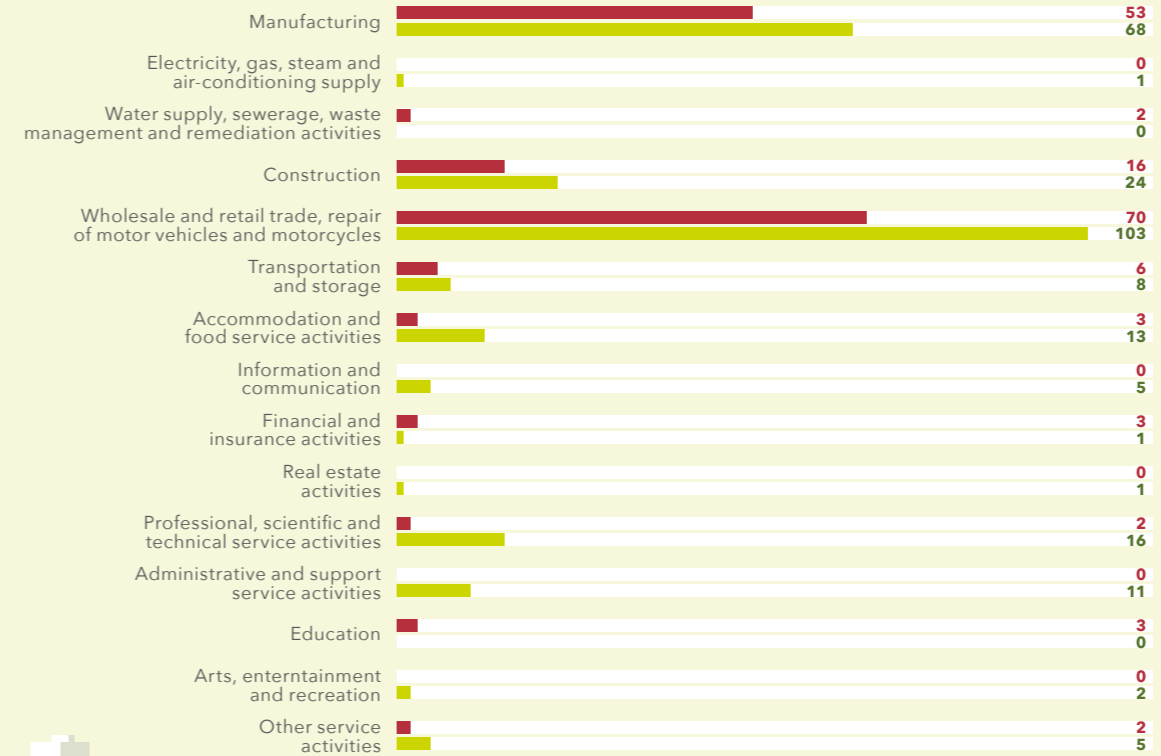
The 83 land parcels in Elfindale Industria host 273 businesses, of which 259 businesses are occupied by economic activity while the remaining 14 businesses' economic activity could not be identified.

83 LAND PARCELS **273 BUSINESSES**



TREND IN ECONOMIC ACTIVITY BETWEEN 2014 AND 2016

NO. OF BUSINESSES: 2014 VS 2016



Industrial area boundaries are subject to change over time so caution must be exercised in interpreting increases or decreases in the number of businesses per sector over the period.

INCREASED BY 15

Manufacturing

INCREASED BY 33

Wholesale and retail trade, repair of motor vehicles and motorcycles

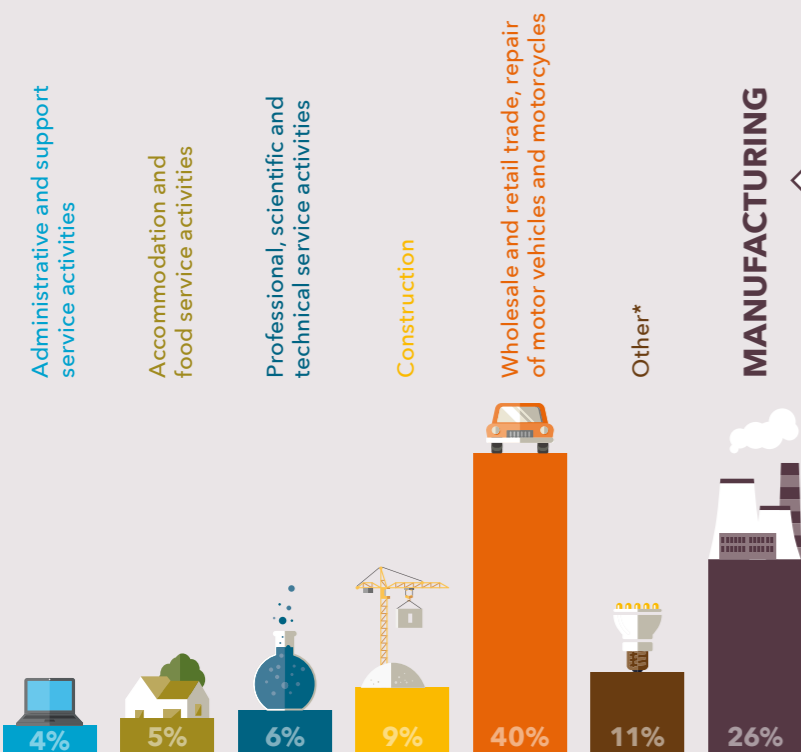
Financial and insurance activities

DECREASED BY 2

Education

DECREASED BY 3

ECONOMIC ACTIVITY OF BUSINESSES



Number of manufacturing businesses per division

Basic metals	1
Beverages	1
Chemicals and chemical products	4
Computer, electronic and optical products	6
Electrical equipment	1
Fabricated metal products, except machinery and equipment	12
Food products	7
Furniture	4
Machinery and equipment not classified elsewhere	1
Other non-metallic mineral products	4
Other transport equipment	8
Pharmaceuticals, medicinal, chemical and botanical products	1
Printing and reproduction of recorded media	1
Repair and installation of machinery and equipment	4
Rubber and plastic products	3
Textiles	6
Wearing apparel	2
Wood and product of wood and cork, except furniture; manufacture of articles of straw and plaiting materials	2

PROPERTIES AVAILABLE

0

VACANT LAND PARCELS

RANGE OF SQM LAND:

0 m² - 0 m²

LAND PARCEL SIZE RANGE:



1

VACANT BUILDINGS

RANGE OF SQM LAND*:

2 000 m² - 3 000 m²

LAND PARCEL SIZE RANGE:



● 0 - 4 999 m² ● 5 000 - 9 999 m² ● 10 000 - 49 999 m² ● 50 000 - 99 000 m² ● 100 000+ m²

* Arts, entertainment and recreation; Electricity, gas, steam and air-conditioning supply; Financial and insurance activities; Information and communication; Other service activities; Real estate activities; Transportation and storage

*sqm of land parcel on which the business sits.