

- Accommodation and food service activities
 - Administrative and support service activities
 - Agriculture, forestry and fishing
 - Arts, entertainment and recreation
 - Construction
 - Education
 - Electricity, gas, steam and air-conditioning supply
 - Financial and insurance activities
 - Human health and social work activities
 - Information and communication
 - Manufacturing
 - No activity
 - Other service activities
 - Professional, scientific and technical service activities
 - Public administration and compulsory social security service activities
 - Real estate activities
 - Transportation and storage
 - Unattainable
 - Vacant unit
 - Water reserve
 - Water supply, sewerage, waste management and remediation activities
 - Wholesale and retail trade, repair of motor vehicles and motorcycles
 - IRT bus stops
- Road reserve
 - Under construction
 - Vacant land
 - Private residence
 - Suburbs
 - Land parcel
 - Greenbelt
 - Open space
 - Vacant building
 - Wetlands



CITY OF CAPE TOWN
ISIXEKO SASEKAPA
STAD KAAPSTAD



Produced by Enterprise and Investment and Organisational, Policy and Planning Departments: Directorate of the Mayor

For more information on this industrial area contact:
 Economic.Research@capetown.gov.za



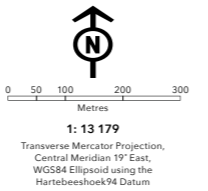
Kraaifontein Industria | 2017



THIS MAP WAS COMPILED BY:
CITY MAPS
 Development Information and GIS
 Tel: +27 21 487 2711
 Fax: +27 21 487 2821
 city.maps@capetown.gov.za

Please note:

- Business names, economic activity and contact details were collected through primary data collection.
- Business contact details were verified directly from the business' website.
- In the event that the name or economic activity of a business could not be identified during primary data collection and it does not have an active website or contact details available to confirm business details, it has been listed as unattainable.



INDUSTRIAL SURVEY
KRAAIFONTEIN
INDUSTRIA

Making progress possible. Together.

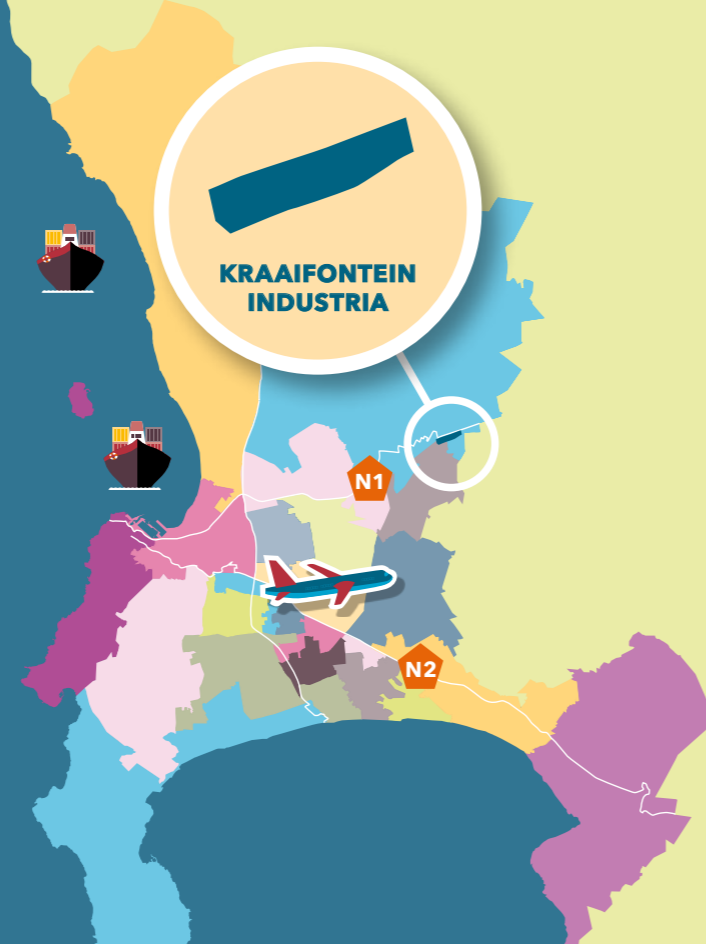
KRAAIFONTEIN INDUSTRIA AT A GLANCE

Located alongside the N1 national highway, the Kraaifontein Industria area is accessible for any transportation means according to E-camp. This relatively small industrial node is home to companies such as Volvo, Scania and Barloworld Logistics.

The Kraaifontein Industria area is mapped across 90 land parcels, of which 80% of the land parcels are occupied by economic activities, while the remaining 20% is vacant land and building parcels, wetland, drains and road reserves that are economically inactive.

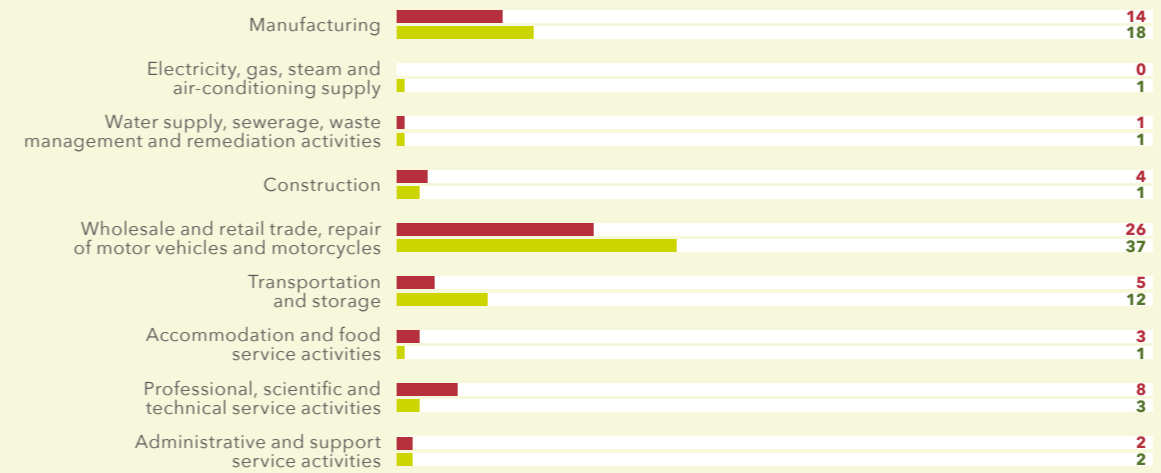
The 72 land parcels referred to above host approximately 90 businesses, 76 that could be identified and 14 that could not.

90 LAND PARCELS **90 BUSINESSES**



TREND IN ECONOMIC ACTIVITY BETWEEN 2014 AND 2016

NO. OF BUSINESSES: 2014 VS 2016



Industrial area boundaries are subject to change over time so caution must be exercised in interpreting increases or decreases in the number of businesses per sector over the period.

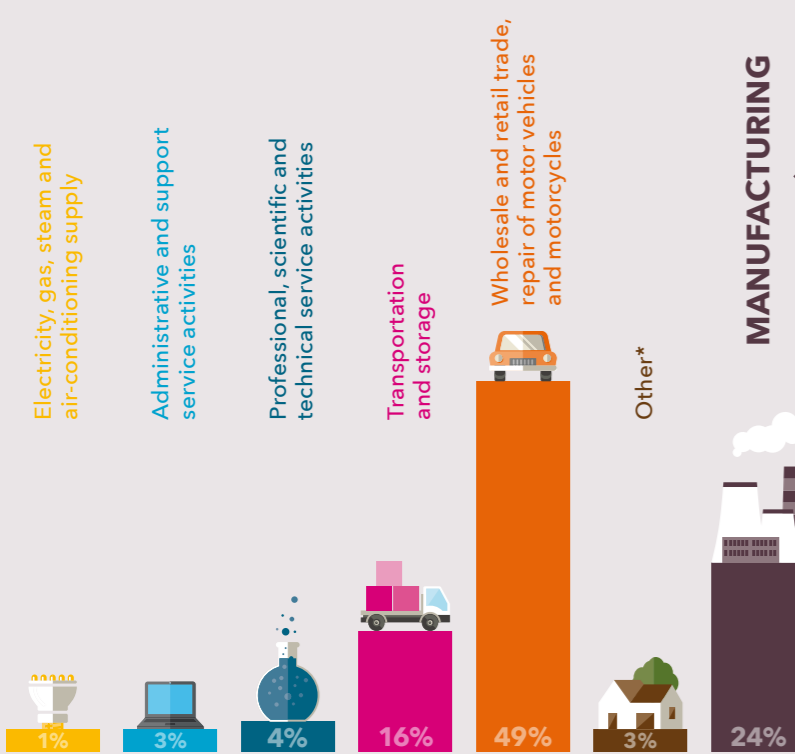
Construction
DECREASED BY 3

Wholesale and retail trade; repair of motor vehicles and motorcycles
INCREASED BY 11

Transportation and storage
INCREASED BY 7

Professional, scientific and technical service activities
DECREASED BY 5

ECONOMIC ACTIVITY OF BUSINESSES



| Number of manufacturing businesses per division | |
|--|---|
| Basic metals | 2 |
| Fabricated metal products, except machinery and equipment | 2 |
| Machinery and equipment not classified elsewhere | 2 |
| Motor vehicles, trailers and semi-trailers | 1 |
| Other non-metallic mineral products | 4 |
| Other transport equipment | 1 |
| Paper and paper products | 1 |
| Repair and installation of machinery and equipment | 1 |
| Rubber and plastic products | 2 |
| Textile | 1 |
| Wood and product of wood and cork, except furniture; manufacture of articles of straw and plaiting materials | 1 |

PROPERTIES AVAILABLE

11
VACANT LAND PARCELS

3
VACANT BUILDINGS

RANGE OF SQM LAND:
199 000 m² - 244 000 m²

RANGE OF SQM LAND*:
8 000 m² - 11 000 m²



● 0 - 4 999 m² ● 5 000 - 9 999 m² ● 10 000 - 49 999 m² ● 50 000 - 99 000 m² ● 100 000+ m²

*Accommodation and food service activities; Construction; Water supply, sewerage, waste management and remediation activities

*sqm of land parcel on which the business sits.