

CITY OF CAPE TOWN
ISIXEKO SASEKAPA
STAD KAAPSTAD


THIS MAP WAS COMPILED BY:
CITY MAPS

Development Information and GIS

Tel: +27 21 487 2711
Fax: +27 21 487 2821
city.maps@capetown.gov.za

Please note:

- Business names, economic activity and contact details were collected through primary data collection.
- Business contact details were verified directly from the business' website.
- In the event that the name or economic activity of a business could not be identified during primary data collection and it does not have an active website or contact details available to confirm business details, it has been listed as unattainable.



0 60 120 240 360
Metres

1: 16 000

Transverse Mercator Projection,
Central Meridian 19° East,
WGS84 Ellipsoid using the
Hartebeeshoek94 Datum

INDUSTRIAL SURVEY
KUILS RIVER
INDUSTRIA



CITY OF CAPE TOWN
ISIXEKO SASEKAPA
STAD KAAPSTAD

For more information on this industrial area contact:
Economic.Research@capetown.gov.za



INVEST CAPE TOWN
COLLABORATE | ENABLE | PROMOTE

Produced by Enterprise and Investment and
Organisational, Policy and Planning Departments:
Directorate of the Mayor



Kuils River Industria | 2017

KUILS RIVER INDUSTRIA AT A GLANCE

Kuils River Industria is a level two administrative region, and is close to Cape Town's wine routes. It is located near the intersection of the M12 and the R102.

Kuils River Industria geographically spread across 118 land parcels of which 64% (76 land parcels) are occupied by economic activity, while the remaining 36% (43 land parcels) are not occupied by any economic activity.

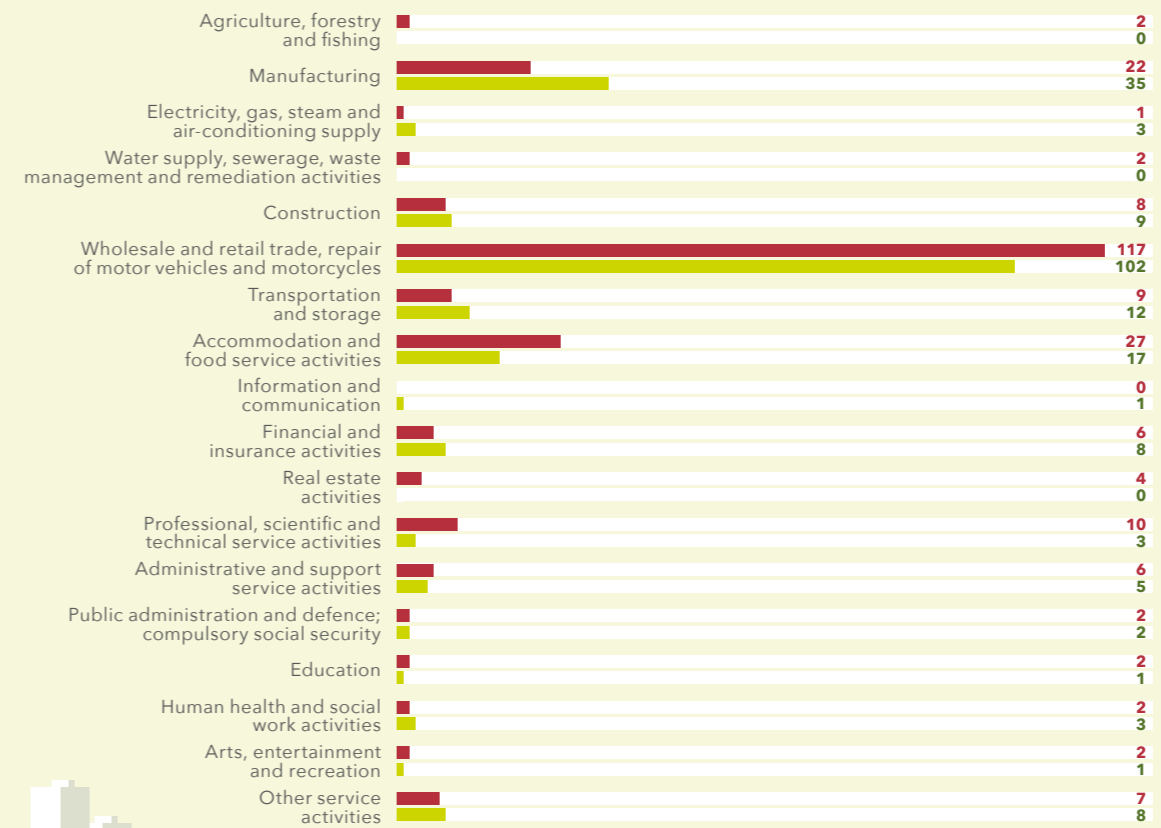
The economically active land parcels (81 land parcels) in Kuils River hosts about 228 businesses. Of the 228 businesses, 210 businesses' economic activity could be positively identified while the remaining 18 businesses economic activity could not be identified.

118 LAND PARCELS **228 BUSINESSES**



TREND IN ECONOMIC ACTIVITY BETWEEN 2014 AND 2016

NO. OF BUSINESSES: 2014 VS 2016



Industrial area boundaries are subject to change over time so caution must be exercised in interpreting increases or decreases in the number of businesses per sector over the period.

INCREASED BY 13

Manufacturing

INCREASED BY 2

Electricity, gas, steam and air-conditioning supply

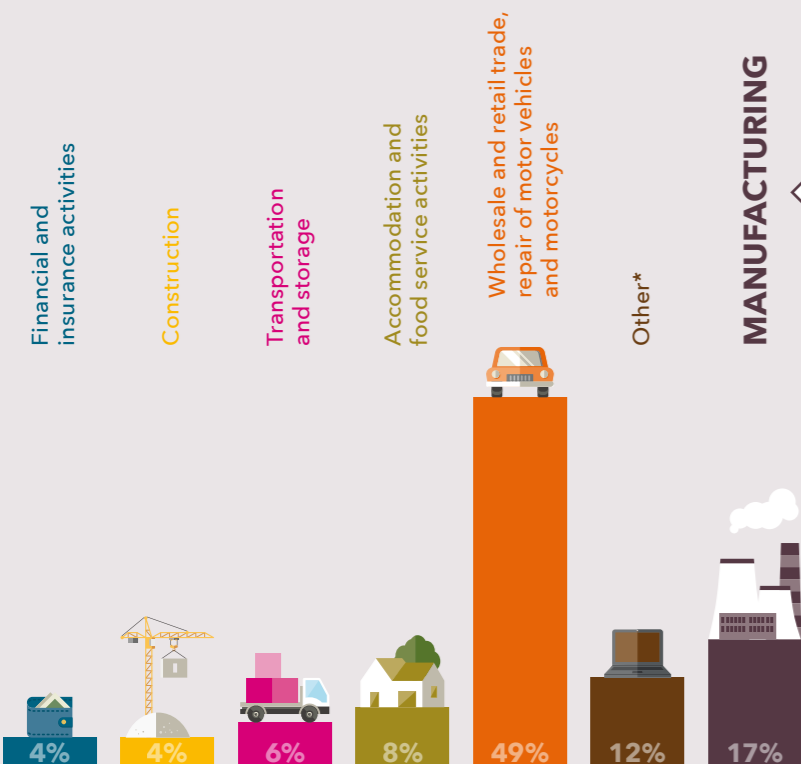
Wholesale and retail trade, repair of motor vehicles and motorcycles

DECREASED BY 15

Accommodation and food service activities

DECREASED BY 10

ECONOMIC ACTIVITY OF BUSINESSES



Number of manufacturing businesses per division

Chemicals & chemical products	2
Electrical equipment	1
Fabricated metal products, except machinery and equipment	19
Furniture	2
Motor vehicles, trailers and semi-trailers	1
Other manufacturing	1
Paper and paper products	1
Printing and reproduction of recorded media	1
Repair and installation of machinery and equipment	2
Rubber and plastic products	2
Wood and product of wood and cork, except furniture; manufacture of articles of straw and plaiting materials	3

PROPERTIES AVAILABLE

16

VACANT LAND PARCELS

RANGE OF SQM LAND:

111 000 m² - 136 000 m²

LAND PARCEL SIZE RANGE:



1

VACANT BUILDING

RANGE OF SQM LAND*:

9 000 m² - 12 000 m²

LAND PARCEL SIZE RANGE:



*Other services; Administrative and support service activities; Electricity, gas, steam and air-conditioning supply; Professional, scientific and technical activities; Human health and social work activities; Public administration and defence; Information and communication; Education; Arts, entertainment and recreation

*sqm of land parcel on which the business sits.