



CITY OF CAPE TOWN
ISIXEKO SASEKAPA
STAD KAAPSTAD



INVEST CAPE TOWN
COLLABORATE | ENABLE | PROMOTE

For more information on this industrial area contact:
Economic.Research@capetown.gov.za

Produced by Enterprise and Investment and
Organisational, Policy and Planning Departments:
Directorate of the Mayor



- | | | |
|---|---|--|
| <ul style="list-style-type: none"> ● Accommodation and food service activities ● Administrative and support service activities ● Agriculture, forestry and fishing ● Arts, entertainment and recreation ● Construction ● Education ● Electricity, gas, steam and air-conditioning supply ● Financial and insurance activities ● Human health and social work activities ● Information and communication ● Manufacturing ● No activity | <ul style="list-style-type: none"> ● Other service activities ● Professional, scientific and technical service activities ● Public administration and defence, compulsory social security service activities ● Real estate activities ● Transportation and storage ● Unattainable ● Vacant unit ● Water reserve ● Water supply, sewerage, waste management and remediation activities ● Wholesale and retail trade, repair of motor vehicles and motorcycles ● IRT bus stops | <ul style="list-style-type: none"> ■ Road reserve ■ Under construction ■ Vacant land ■ Private residence ■ Suburbs ■ Land parcel ■ Greenbelt ■ Open space ■ Vacant building ■ Wetlands |
|---|---|--|



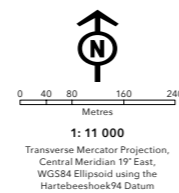
Ndabeni Industria | 2017



THIS MAP WAS COMPILED BY:
CITY MAPS
Development Information and GIS
Tel: +27 21 487 2711
Fax: +27 21 487 2821
city.maps@capetown.gov.za

Please note:

- Business names, economic activity and contact details were collected through primary data collection.
- Business contact details were verified directly from the business' website.
- In the event that the name or economic activity of a business could not be identified during primary data collection and it does not have an active website or contact details available to confirm business details, it has been listed as unattainable.



INDUSTRIAL SURVEY
**NDABENI
INDUSTRIA**

Making progress possible. Together.

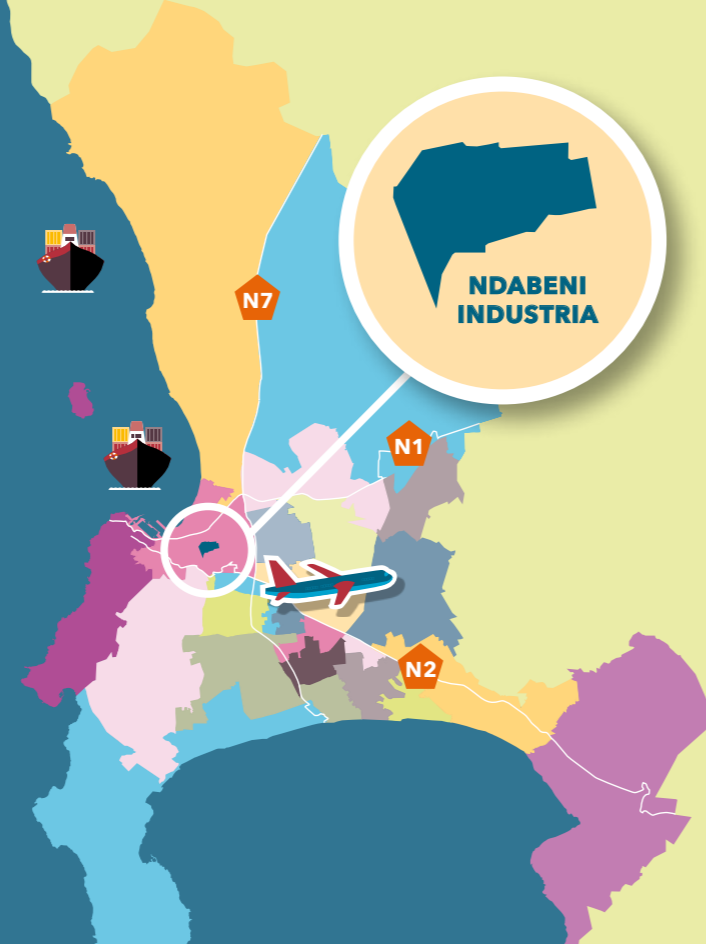
NDABENI INDUSTRIA AT A GLANCE

The Ndabeni Industria is a small industrial area south of the Voortrekker Road corridor of the City of Cape Town. This industrial node is considered as one of the safest industrial nodes with relatively high levels of qualified workers contributing to the workforce in the area. Centrally located, this industrial node allows for relatively quick and easy access onto the M5, which allows for direct access to both the N1 and N2 highways leading to and from the Cape Town Central Business District. Being on and around the main highway routes makes this industrial area very accessible to both Cape Town International Airport, which is about 12 km from Ndabeni, and the harbour and container terminals which are about 6 km away.

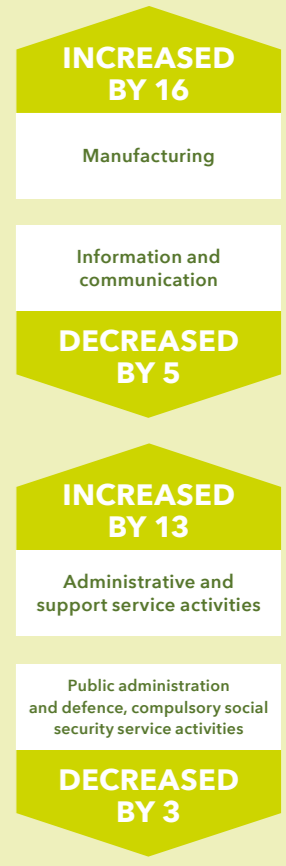
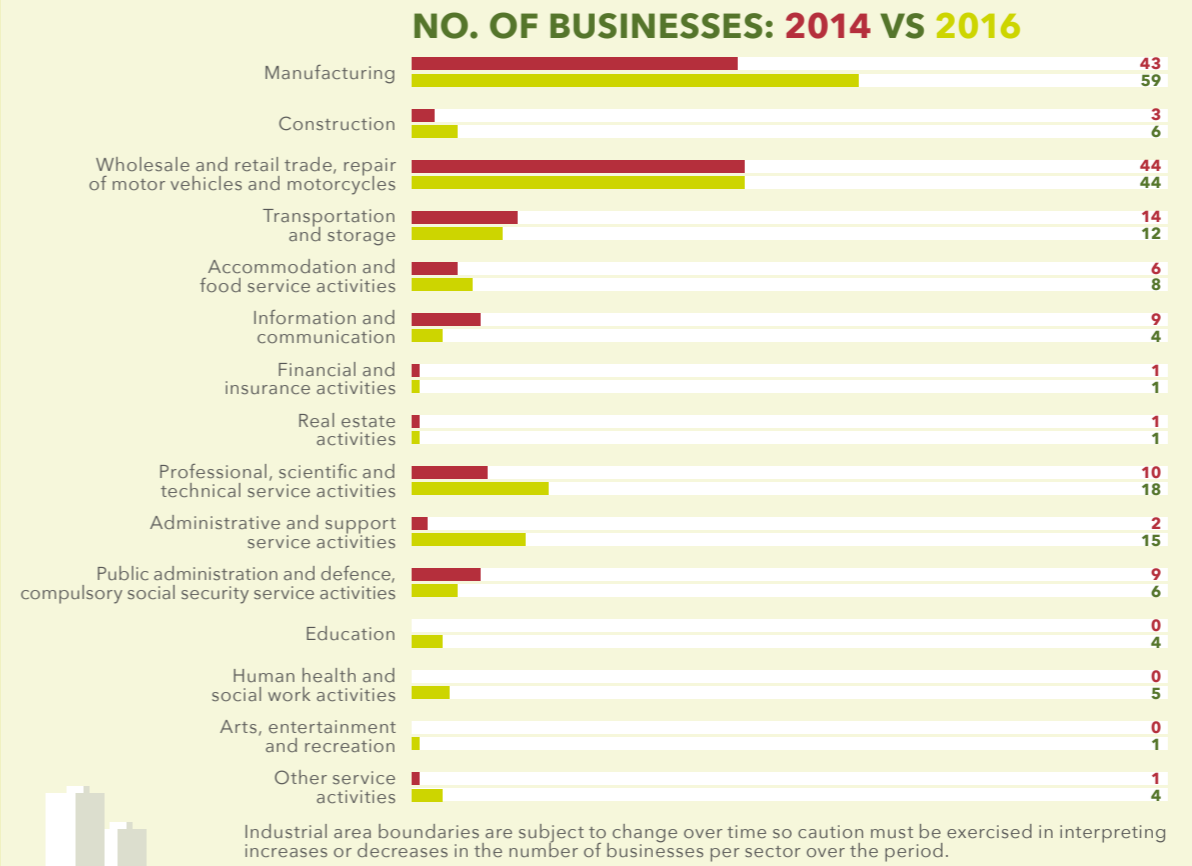
Currently, Ndabeni Industria is geographically mapped across 56 land parcels. Of which 97% of land parcels is occupied by economic activity and the remaining 3% of land parcels is not economically active.

The 97% economically active land parcels in Ndabeni Industria hosts 196 businesses. Of the 196 businesses, 188 businesses could be positively identified while the remaining 8 businesses could not be identified.

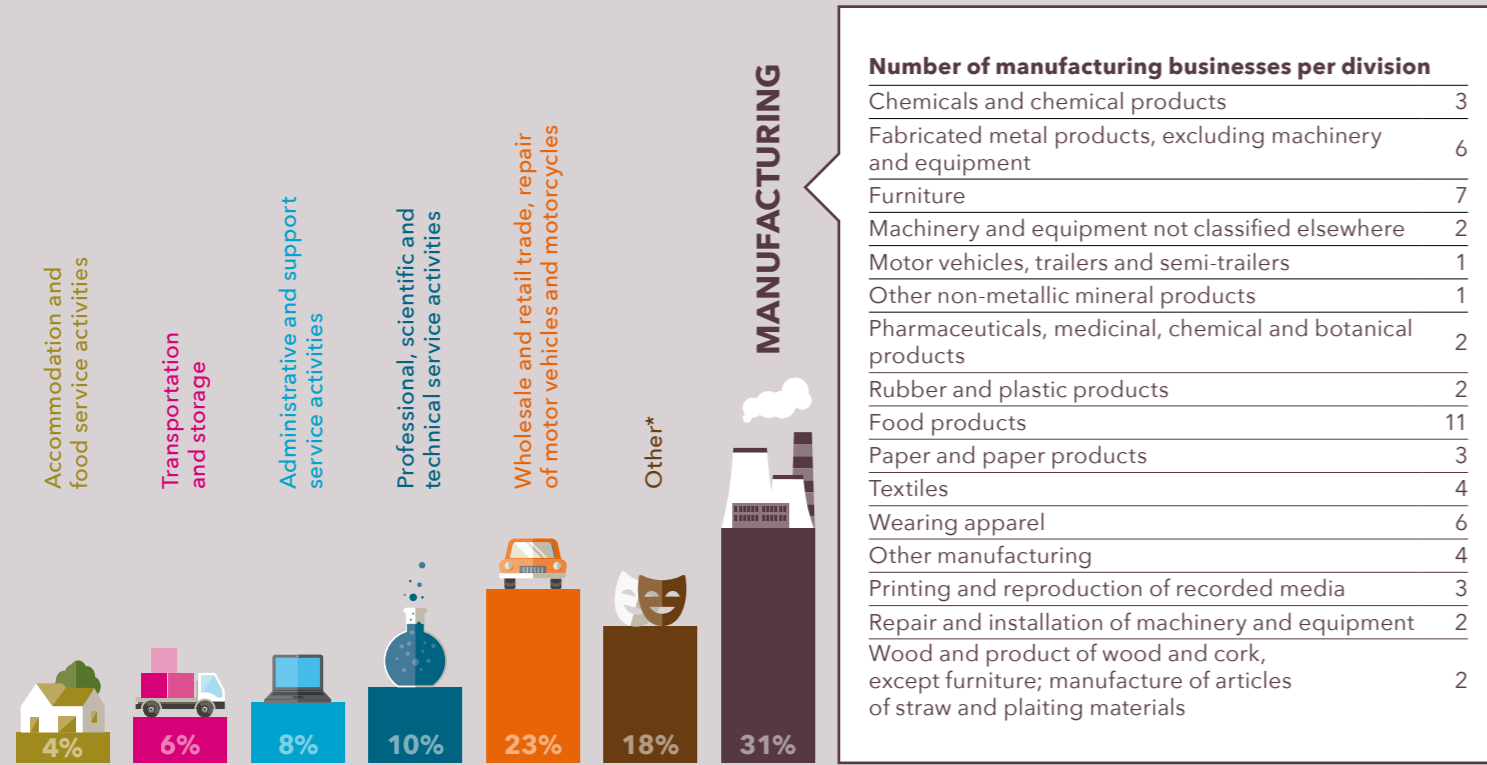
56 LAND PARCELS **196 BUSINESSES**



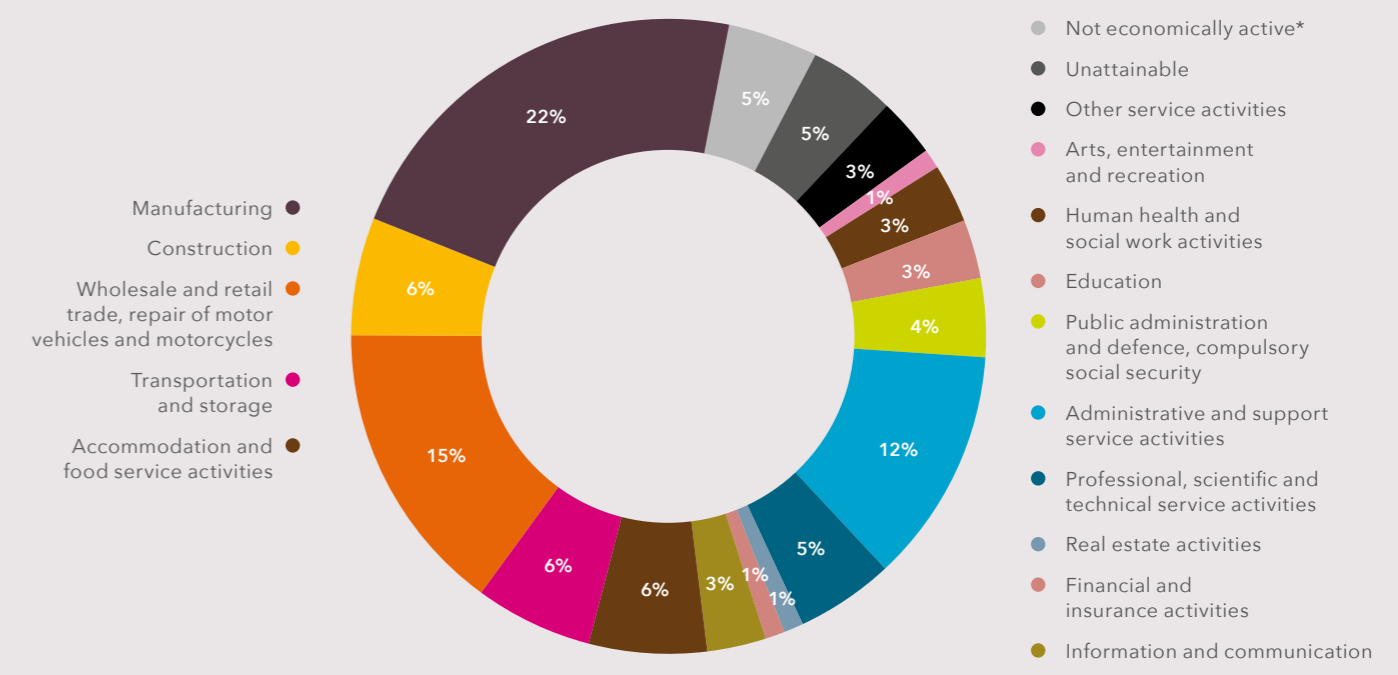
TREND IN ECONOMIC ACTIVITY BETWEEN 2014 AND 2016



ECONOMIC ACTIVITY OF BUSINESSES



DISTRIBUTION OF LAND PARCEL USAGE



*Arts, entertainment and recreation; Construction; Education; Financial and insurance activities; Human health and social work activities; Information and communication; Other service activities; Public administration and defence, compulsory social security service activities; Real estate activities

*Not economically active consists of 5% road reserves.