

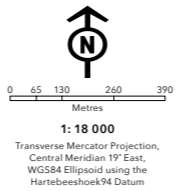
- | | | |
|---|---|--|
| <ul style="list-style-type: none"> ● Accommodation and food service activities ● Administrative and support service activities ● Agriculture, forestry and fishing ● Arts, entertainment and recreation ● Construction ● Education ● Electricity, gas, steam and air-conditioning supply ● Financial and insurance activities ● Human health and social work activities ● Information and communication ● Manufacturing ● No activity | <ul style="list-style-type: none"> ● Other service activities ● Professional, scientific and technical service activities ● Public administration and defence, compulsory social security service activities ● Real estate activities ● Transportation and storage ● Unattainable ● Vacant unit ● Water reserve ● Water supply, sewerage, waste management and remediation activities ● Wholesale and retail trade, repair of motor vehicles and motorcycles ● IRT bus stops | <ul style="list-style-type: none"> ■ Road reserve ■ Under construction ■ Vacant land ■ Private residence ■ Suburbs ■ Land parcel ■ Greenbelt ■ Open space ■ Vacant building ■ Wetlands |
|---|---|--|



THIS MAP WAS COMPILED BY:
CITY MAPS
 Development Information and GIS
 Tel: +27 21 487 2711
 Fax: +27 21 487 2821
 city.maps@capetown.gov.za

Please note:

- Business names, economic activity and contact details were collected through primary data collection.
- Business contact details were verified directly from the business' website.
- In the event that the name or economic activity of a business could not be identified during primary data collection and it does not have an active website or contact details available to confirm business details, it has been listed as unattainable.



INDUSTRIAL SURVEY
PAROW INDUSTRIA



CITY OF CAPE TOWN
ISIXEKO SASEKAPA
STAD KAAPSTAD



Produced by Enterprise and Investment and Organisational, Policy and Planning Departments: Directorate of the Mayor

For more information on this industrial area contact:
 Economic.Research@capetown.gov.za



Parow Industria | 2017

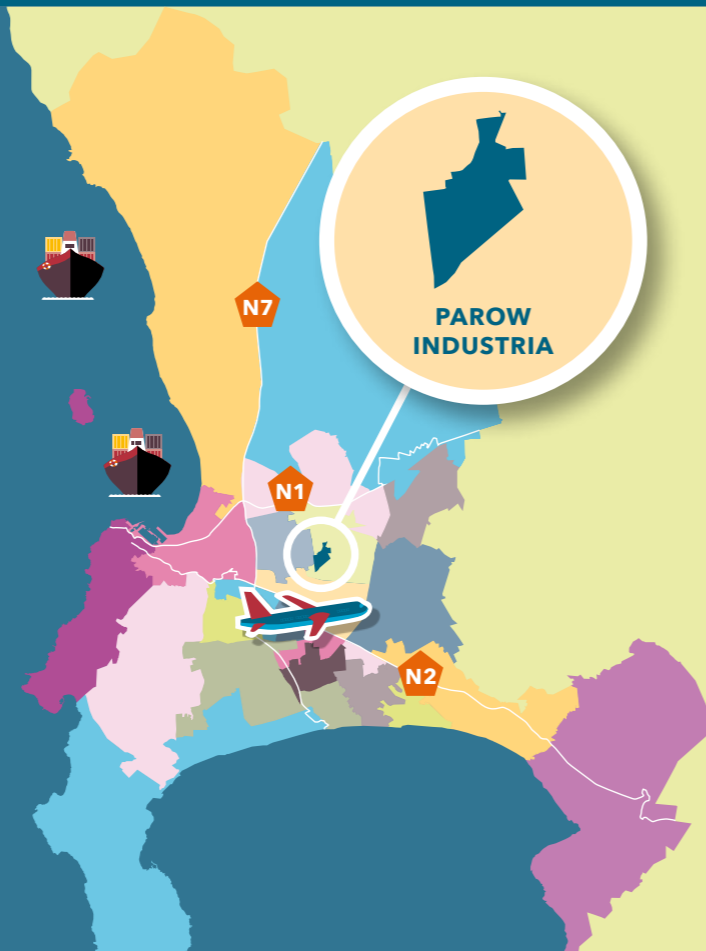
Making progress possible. Together.

PAROW INDUSTRIA AT A GLANCE

Parow Industria is plotted across 177 land parcels, 95% (169 land parcels) of which are occupied by economic activity while the remaining 5% (8 land parcels) is not economically active.

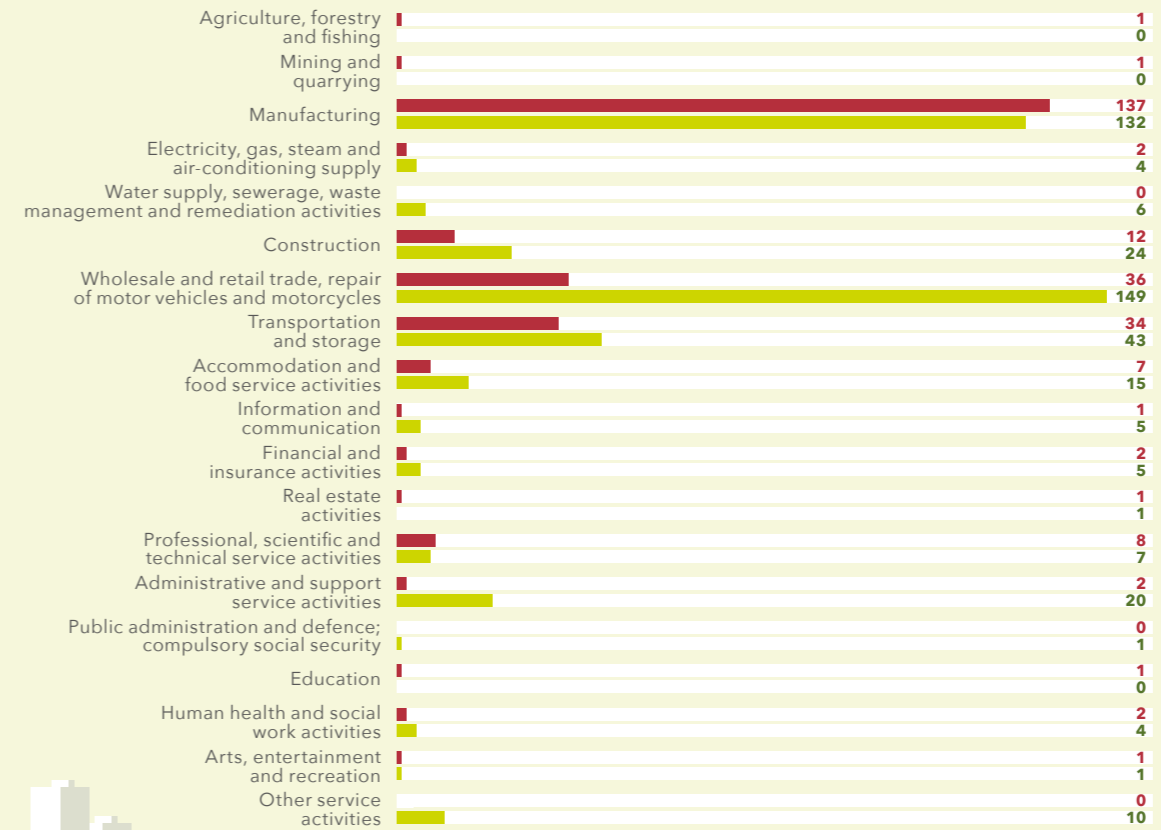
The economically active land parcels constitute 434 businesses. Of the 434 businesses, 427 businesses could be identified and the remaining 7 businesses could not be identified.

177 LAND PARCELS **434 BUSINESSES**



TREND IN ECONOMIC ACTIVITY BETWEEN 2014 AND 2016

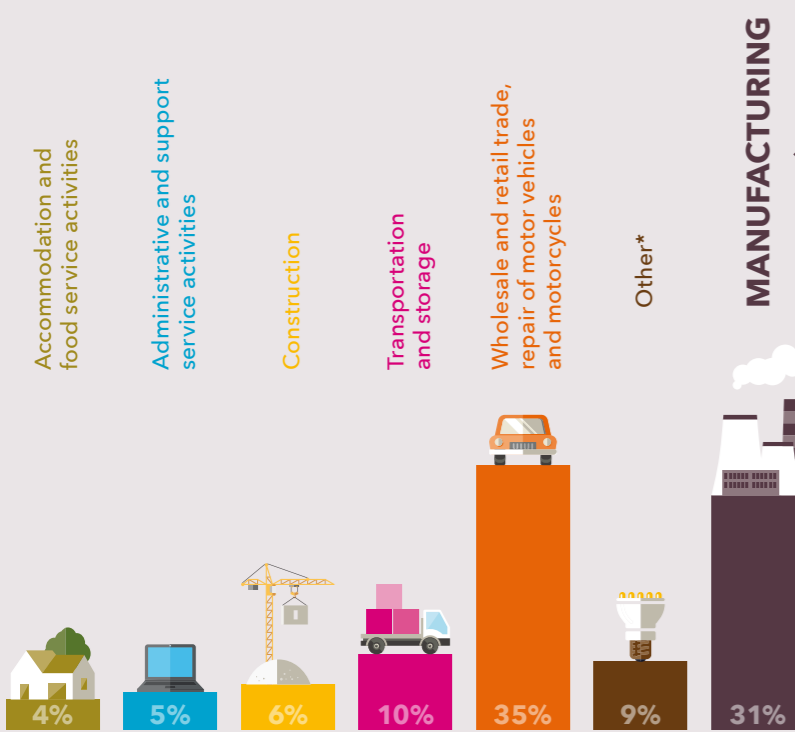
NO. OF BUSINESSES: 2014 VS 2016



Industrial area boundaries are subject to change over time so caution must be exercised in interpreting increases or decreases in the number of businesses per sector over the period.

- Agriculture, forestry and fishing**
DECREASED BY 1
- Manufacturing**
DECREASED BY 5
- Wholesale and retail trade, repair of motor vehicles and motorcycles**
INCREASED BY 113
- Administrative and support service activities**
INCREASED BY 18

ECONOMIC ACTIVITY OF BUSINESSES



Number of manufacturing businesses per division	
Basic metals	6
Pharmaceuticals, medicinal chemical and botanical products	1
Beverages	2
Chemicals and chemical products	14
Computer, electronic and optical products	6
Electrical equipment	1
Fabricated metal products, except machinery and equipment	23
Food products	13
Furniture	3
Leather and related products	1
Machinery and equipment not classified elsewhere	10
Motor vehicles, trailers and semi-trailers	3
Other manufacturing	2
Other non-metallic mineral products	4
Other transport equipment	2
Paper and paper products	1
Printing and reproduction of recorded media	4
Repair and installation of machinery and equipment	5
Rubber and plastic products	14
Textiles	6
Wood and product of wood and cork, except furniture; manufacture of articles of straw and plaiting materials	10

*Information and communication; Real estate activities; Financial and insurance activities; Public administration and defence, compulsory social security service activities; Human health and social work activities; Arts, entertainment and recreation; Other service activities; Electricity, gas, steam and air-conditioning supply; Water supply, sewerage, waste management and remediation activities; Professional, scientific and technical activities

PROPERTIES AVAILABLE

3

VACANT LAND PARCELS

RANGE OF SQM LAND:
53 000 m² - 65 000 m²

LAND PARCEL SIZE RANGE:

0	1	2	0	0
---	---	---	---	---

0

VACANT BUILDINGS

RANGE OF SQM LAND*:
0 m² - 0 m²

LAND PARCEL SIZE RANGE:

0	0	0	0	0
---	---	---	---	---

● 0 - 4 999 m² ● 5 000 - 9 999 m² ● 10 000 - 49 999 m² ● 50 000 - 99 000 m² ● 100 000+ m²

*sqm of land parcel on which the business sits.