

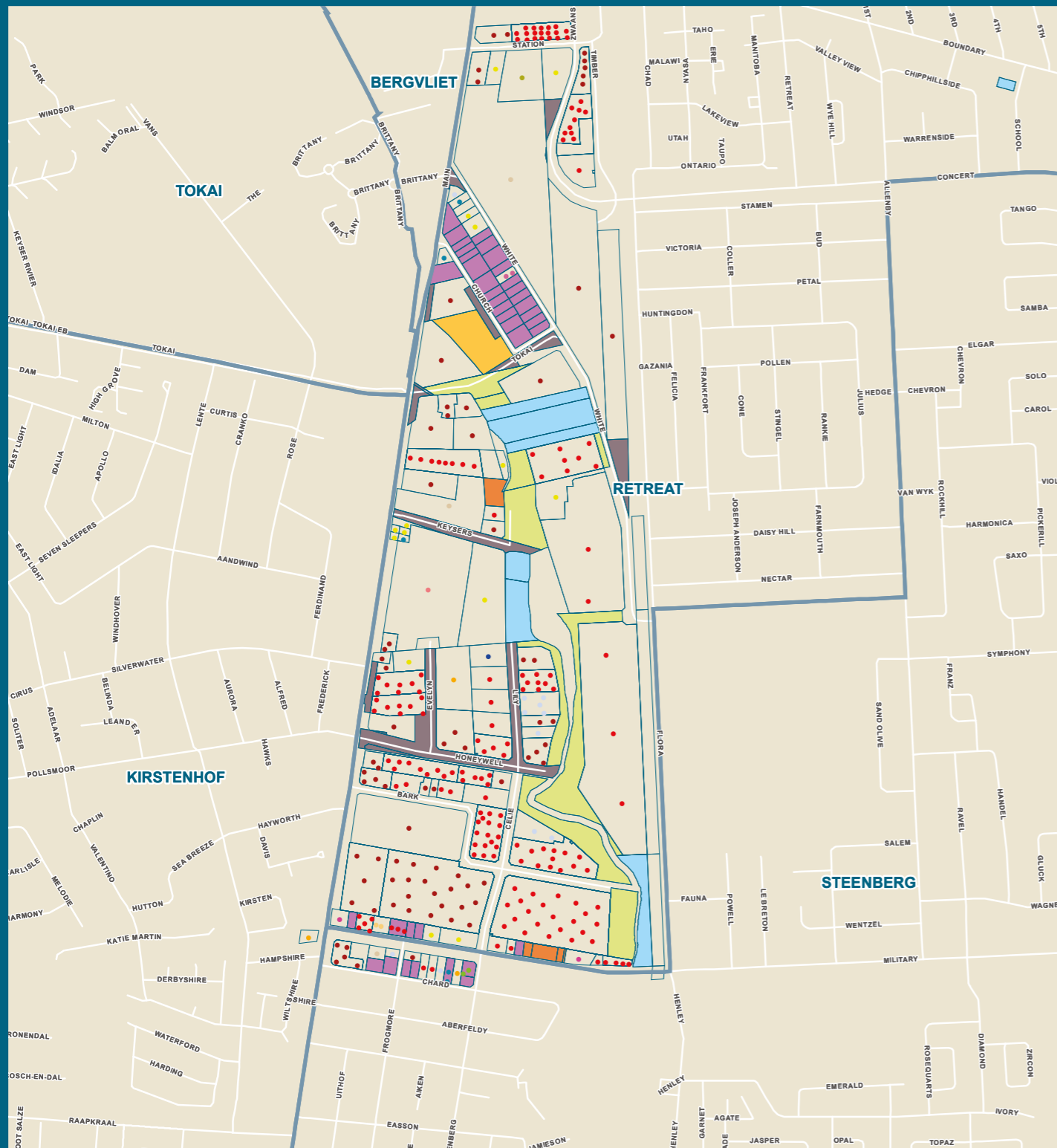


CITY OF CAPE TOWN  
ISIXEKO SASEKAPA  
STAD KAAPSTAD



Produced by Enterprise and Investment and  
Organisational, Policy and Planning Departments:  
Directorate of the Mayor

For more information on this industrial area contact:  
Economic.Research@capetown.gov.za



- |   |  |
|---|--|
| ● Accommodation and food service activities           | ● Other service activities   |
| ● Administrative and support service activities       | ● Professional, scientific and technical service activities                        |
| ● Agriculture, forestry and fishing                   | ● Public administration and defence, compulsory social security service activities |
| ● Arts, entertainment and recreation                  | ● Real estate activities   |
| ● Construction  | ● Transportation and storage   |
| ● Education   | ● Unattainable   |
| ● Electricity, gas, steam and air-conditioning supply | ● Vacant unit  |
| ● Financial and insurance activities                  | ● Water reserve  |
| ● Human health and social work activities             | ● Water supply, sewerage, waste management and remediation activities              |
| ● Information and communication                       | ● Wholesale and retail trade, repair of motor vehicles and motorcycles             |
| ● Manufacturing                                       | ● IRT bus stops  |
| ● No activity   |  |

- |                      |
|----------------------|
| ■ Road reserve       |
| ■ Under construction |
| ■ Vacant land        |
| ■ Private residence  |
| ■ Suburbs            |
| ■ Land parcel        |
| ■ Greenbelt          |
| ■ Open space         |
| ■ Vacant building    |
| ■ Wetlands           |

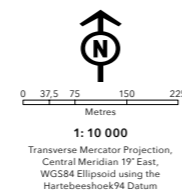


# Retreat Industria | 2017



THIS MAP WAS COMPILED BY:  
**CITY MAPS**  
Development Information and GIS  
Tel: +27 21 487 2711  
Fax: +27 21 487 2821  
city.maps@capetown.gov.za

Please note:  
• Business names, economic activity and contact details were collected through primary data collection.  
• Business contact details were verified directly from the business' website.  
• In the event that the name or economic activity of a business could not be identified during primary data collection and it does not have an active website or contact details available to confirm business details, it has been listed as unattainable.



INDUSTRIAL SURVEY  
**RETREAT INDUSTRIA**

Making progress possible. Together.

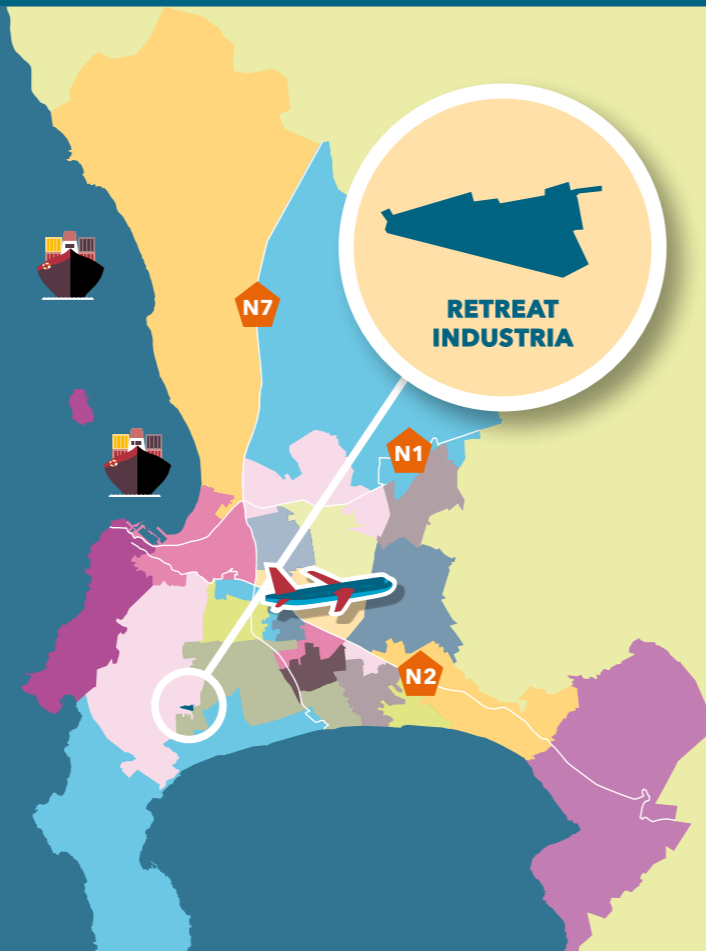
## RETREAT INDUSTRIA AT A GLANCE

Retreat Industrial area is a small light industrial node, situated in the Southern part of the Southern Suburbs of Cape Town. This industrial node has quick and easy access to the M3 freeway as well as the M5 freeway, which leads to both the N1 and N2 highways, which gives way to and from the Central Business District (CBD) and Cape Town International Airport.

Retreat Industria is plotted across 181 land parcels, 56% (102 land parcels) of which is occupied by economic activity with the remaining 44% (79 land parcels) of the land parcels not being economically active.

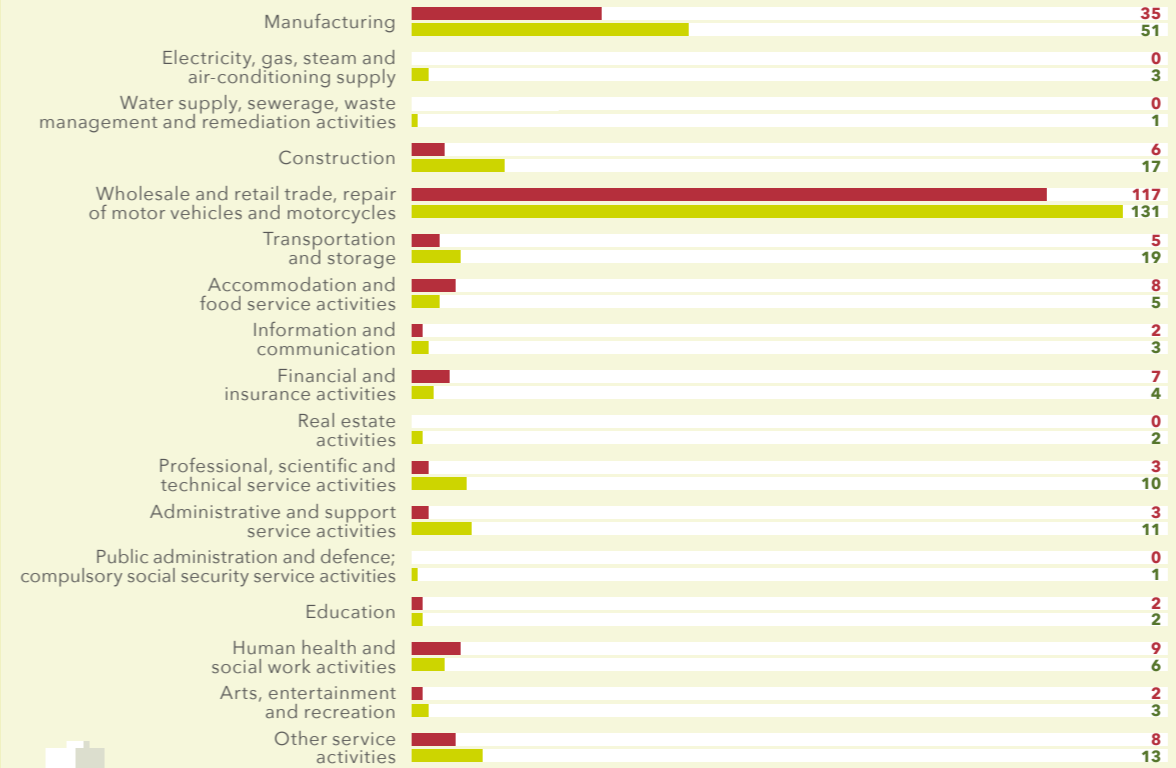
The 56% (102) of land parcels occupies 282 businesses, of the 282 businesses only 270 could be identified and the remaining 12 could not be identified.

**181 LAND PARCELS** | **282 BUSINESSES**



## TREND IN ECONOMIC ACTIVITY BETWEEN 2014 AND 2016

### NO. OF BUSINESSES: 2014 VS 2016



Industrial area boundaries are subject to change over time so caution must be exercised in interpreting increases or decreases in the number of businesses per sector over the period.

**INCREASED BY 16**

Manufacturing

**INCREASED BY 14**

Wholesale and retail trade, repair of motor vehicles and motorcycles

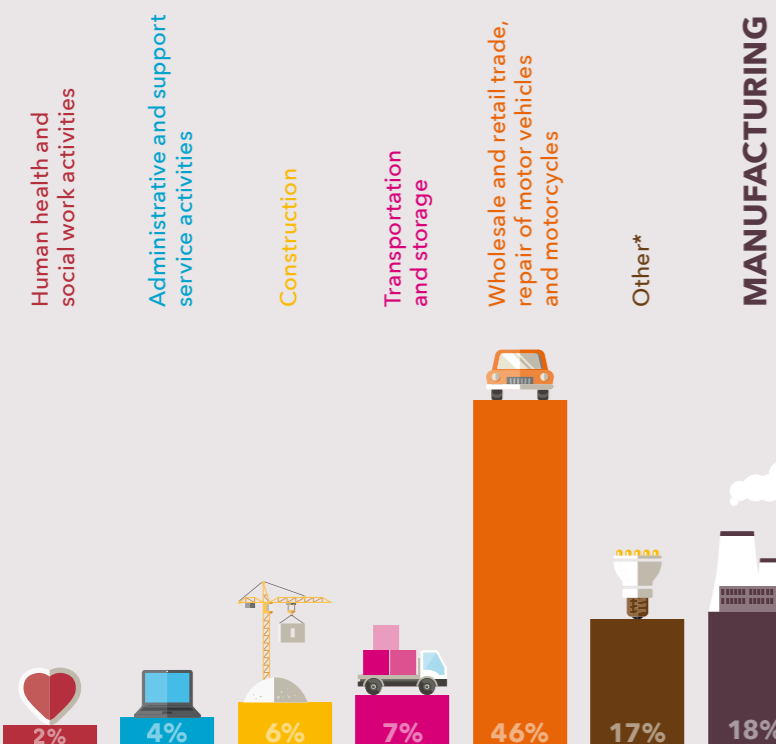
Accommodation and food service activities

**DECREASED BY 3**

Financial and insurance activities

**DECREASED BY 3**

## ECONOMIC ACTIVITY OF BUSINESSES



### Number of manufacturing businesses per division

Chemicals and chemical products	1
Computer, electronic and optical products	1
Electrical equipment	2
Fabricated metal products, excluding machinery and equipment	9
Food products	1
Furniture	4
Leather and related products	3
Machinery and equipment not classified elsewhere	2
Motor vehicles, trailers and semi-trailers	3
Other non-metallic mineral products	1
Printing and reproduction of recorded media	5
Rubber and plastic products	4
Textiles	5
Wearing apparel	3
Wood and product of wood and cork, except furniture; manufacture of articles of straw and plaiting materials	7

## PROPERTIES AVAILABLE

**5**

VACANT LAND PARCEL

RANGE OF SQM LAND:

**3 000 m<sup>2</sup> - 5 000 m<sup>2</sup>**

LAND PARCEL SIZE RANGE:



**0**

VACANT BUILDINGS

RANGE OF SQM LAND\*:

**0 m<sup>2</sup> - 0 m<sup>2</sup>**

LAND PARCEL SIZE RANGE:



\*Accommodation and food service activities; Arts, entertainment and recreation; Education; Electricity, gas, steam and air-conditioning supply; Financial and insurance activities; Information and communication; Other service activities; Professional, scientific and technical service activities; Public administration and defence, compulsory social security service activities; Real estate activities; Water supply, sewerage, waste management and remediation activities;

\*sqm of land parcel on which the business sits.