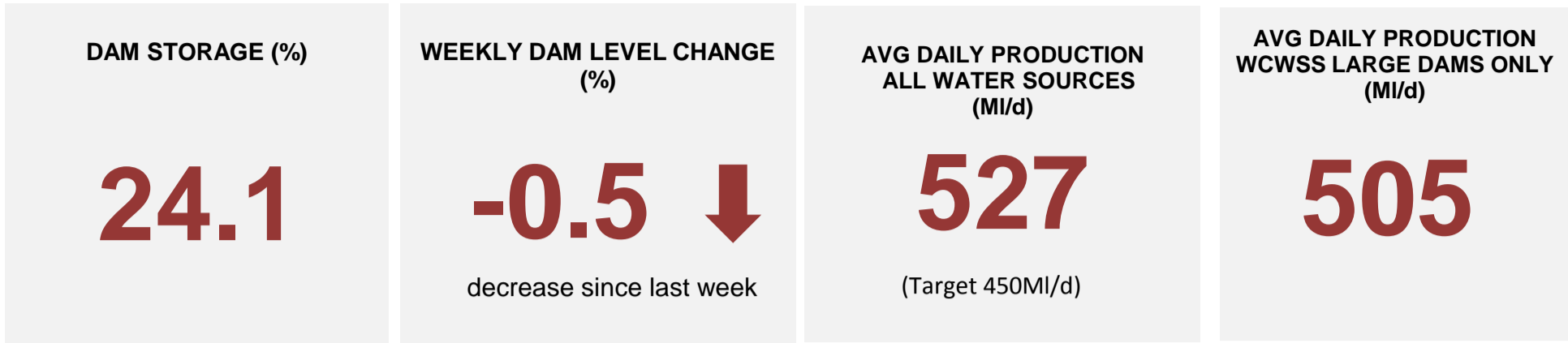
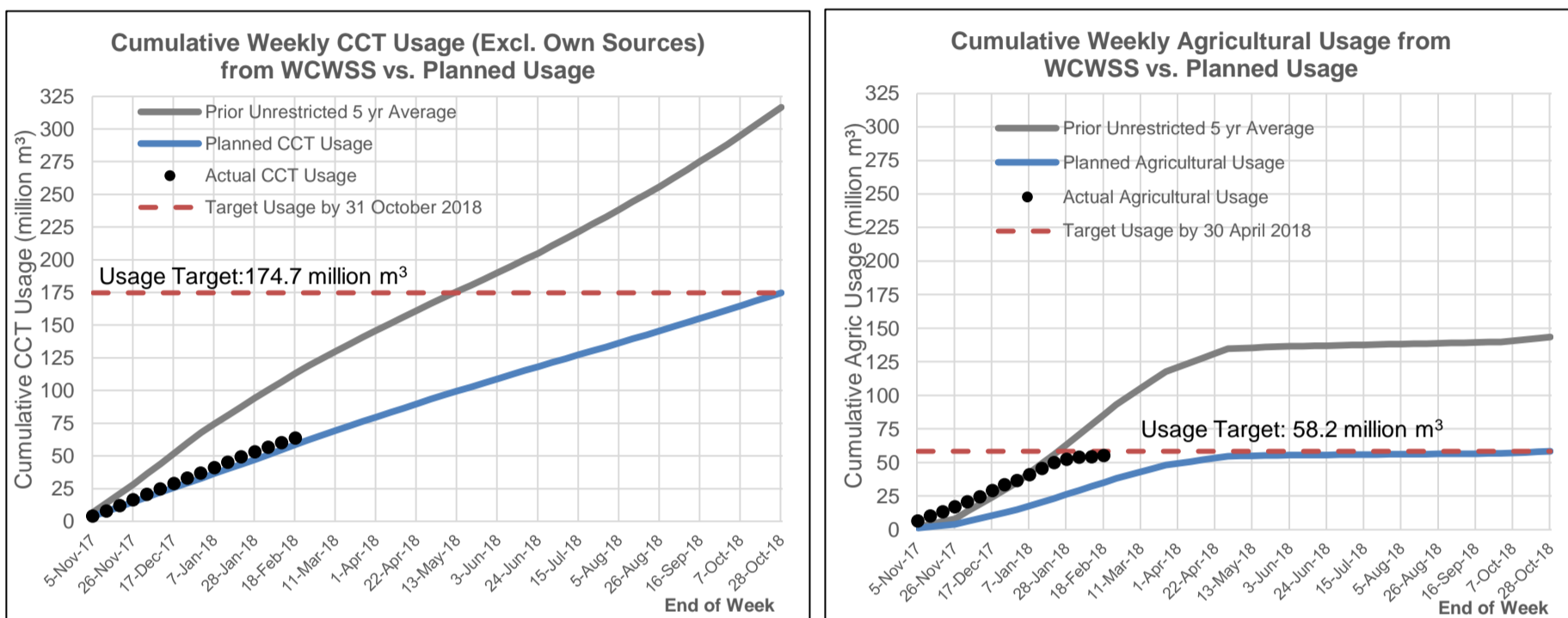


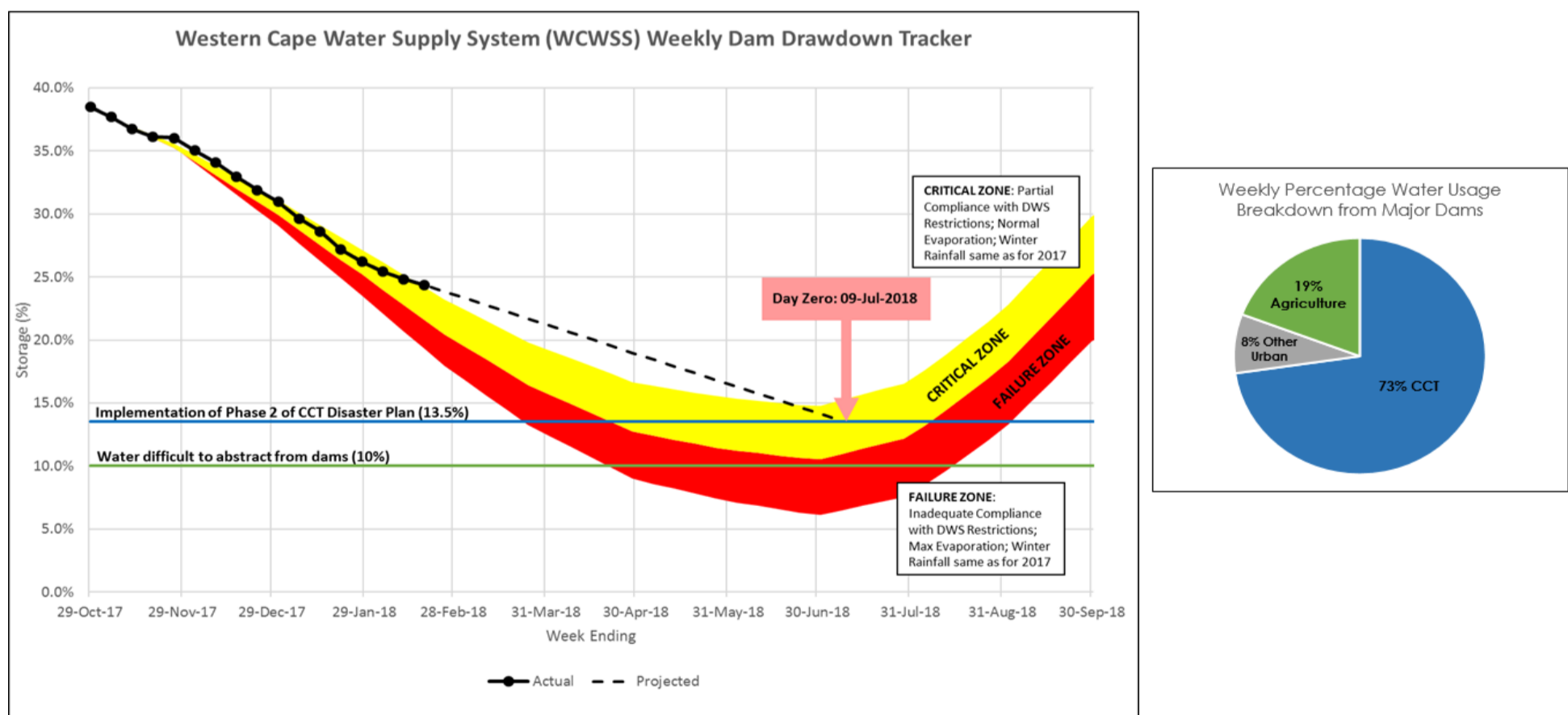
23 February 2018



Water Usage From Large Dams Comprising The Western Cape Water Supply System (WCWSS)



Western Cape Water Supply System (WCWSS) Weekly Dam Drawdown Tracker



Disclaimer: The data depicted above is indicative and has been based on the City's own assessment of water use from the WCWSS. It is subject to official verification by the National Department of Water and Sanitation.

Water Stored in Major Dams Comprising Western Cape Water Supply System (WCWSS)

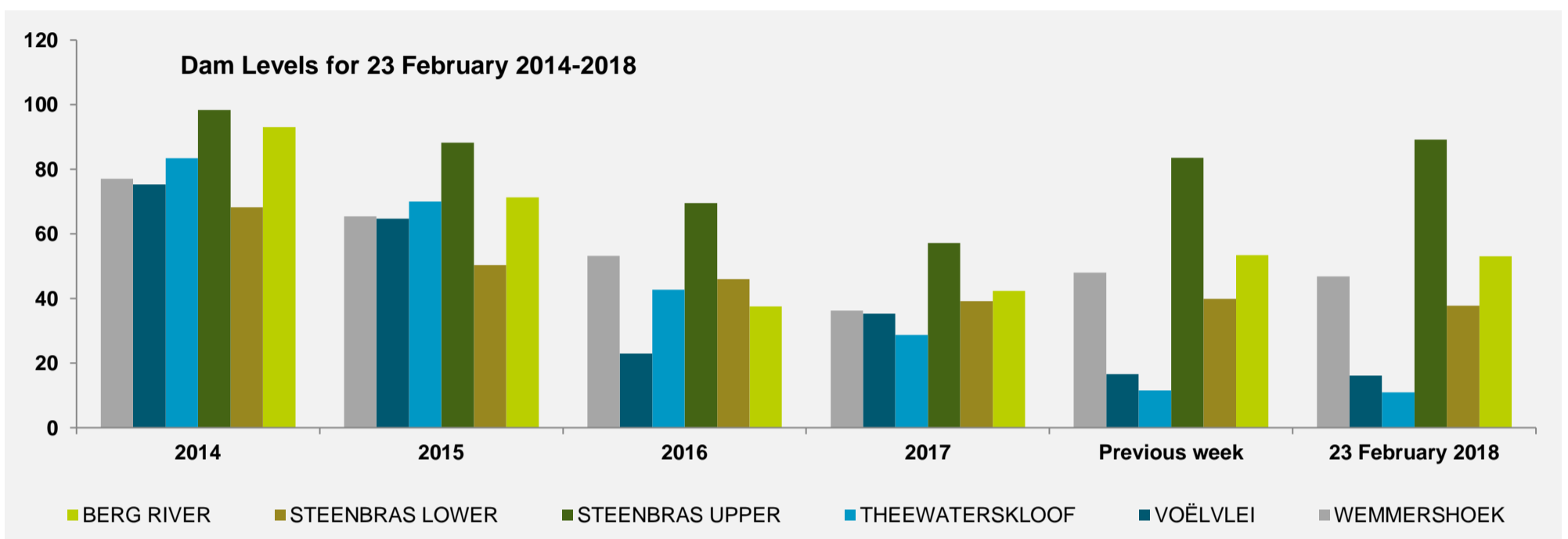
MAJOR DAMS	STORAGE						
	CAPACITY	%	%	%	%	%	%
	MI	23 February 2018	Previous week	2017	2016	2015	2014
BERG RIVER	130 010	53.1	53.4	42.4	37.5	71.3	93.1
STEENBRAS LOWER	33 517	37.8	40.0	39.2	46.0	50.4	68.2
STEENBRAS UPPER	31 767	89.2	83.6	57.2	69.6	88.3	98.3
THEEWATERSKLOOF	480 188	10.9	11.6	28.7	42.8	70.1	83.4
VOËLVLEI	164 095	16.2	16.7	35.3	23.0	64.8	75.4
WEMMERSHOEK	58 644	46.9	48.0	36.3	53.2	65.5	77.1
TOTAL STORED	898 221	216 704	220 808	303 796	360 608	618 780	744 538
% STORAGE		24.1	24.6	33.8	40.1	68.9	82.9

NOTES:

1) Capacity of the major dams of the Western Cape Water Supply System is 99.6% and that of the minor dams 0.4% of the combined capacity of the major and minor dams. Kindly note that all the Major Dams show gross capacity.

2) All figures are for 23 February for each year except for those in the second column, which gives the figures for the previous week of this year.

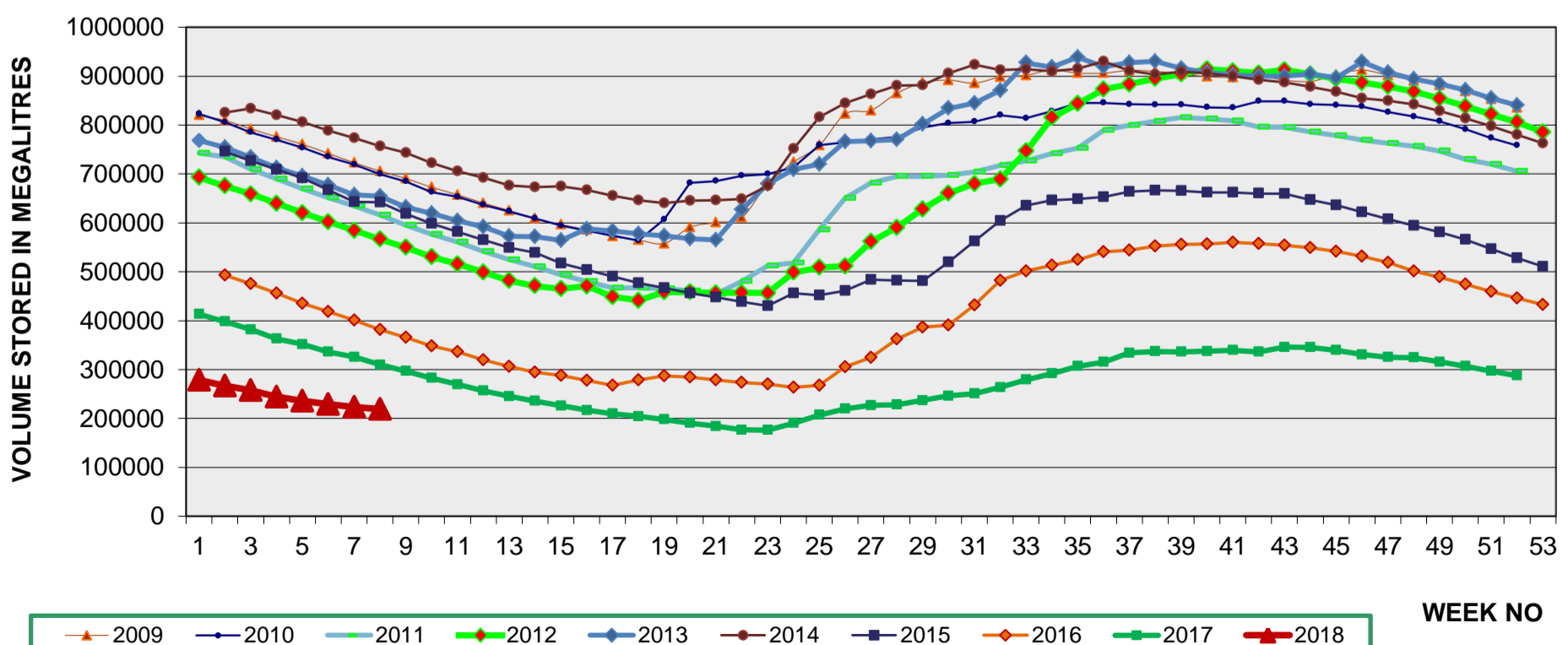
3) The last 10% of a dam's water is difficult to use, the useable water in the dam is approximately 10% less than the dam level.



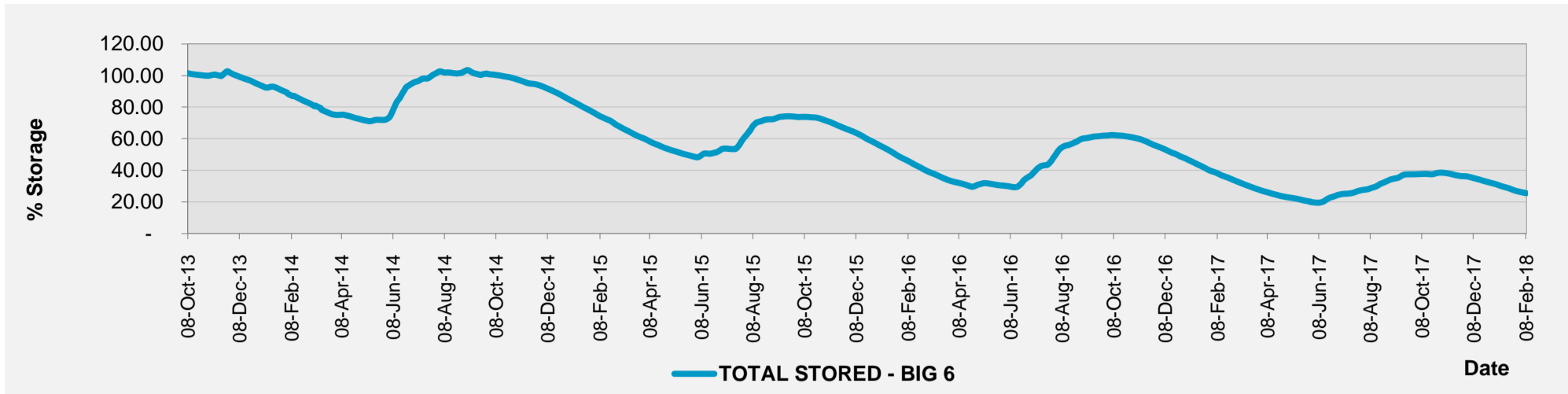
Water Stored in Minor Dams Within Cape Town

MINOR DAMS	STORAGE						
	CAPACITY	%	%	%	%	%	%
	MI	23 February 2018	Previous week	2017	2016	2015	2014
ALEXANDRA (Table Mountain)	126	36.6	37.2	32.1	40.8	49.5	52.9
DE VILLIERS (Table Mountain)	243	76.9	77.7	53.3	69.9	36.2	93.9
HELY-HUTCHINSON (Table Mountain)	925	96.1	96.6	96.1	83.4	0.0	78.0
KLEINPLAATS (Simon's Town)	1 368	45.5	46.1	50.3	45.4	31.6	71.1
LAND-EN-ZEEZICHT (Helderberg)	451	94.2	95.7	85.0	16.3		
LEWIS GAY (Simon's Town)	182	97.2	96.1	58.4	20.0	78.0	69.2
VICTORIA (Table Mountain)	128	84.1	84.7	81.3	52.6	56.5	84.7
WOODHEAD (Table Mountain)	954	85.8	86.1	97.8	67.0	71.8	58.4

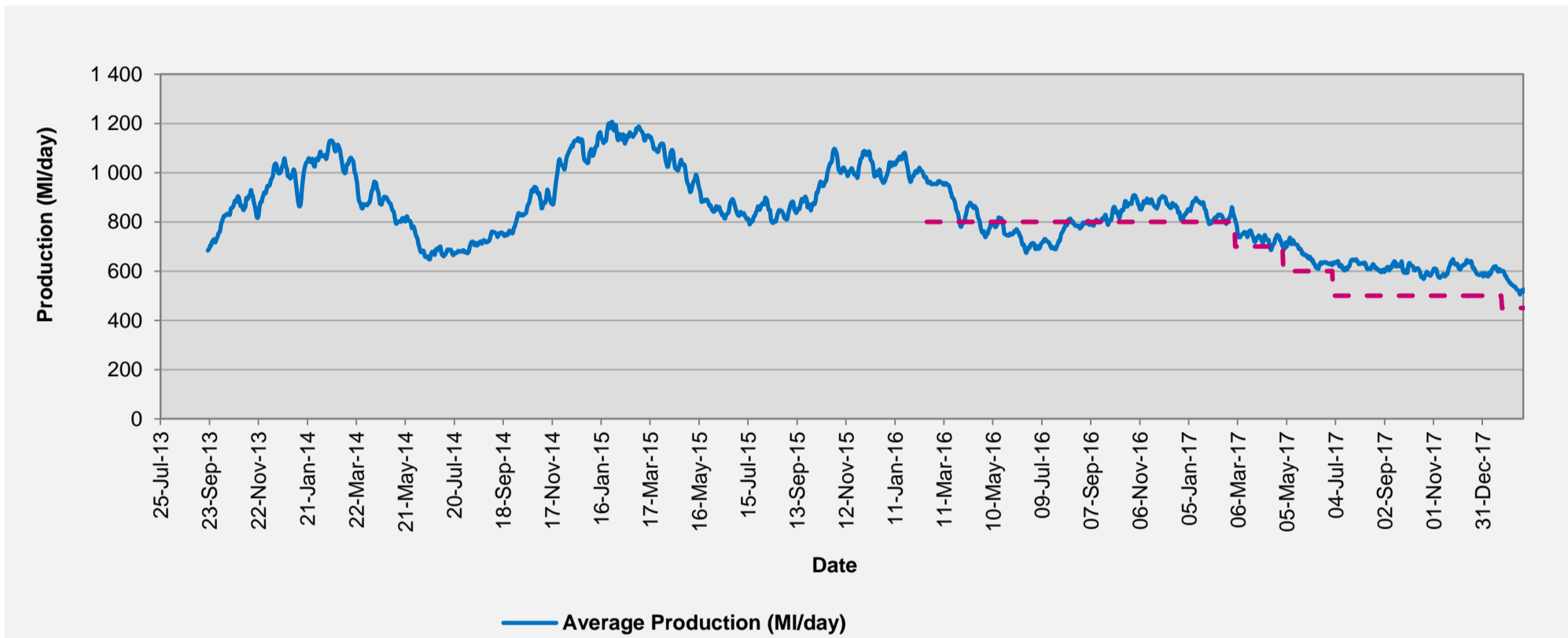
Ten Year Graph Indicating Volume of Water Stored in Major Dams Comprising Western Cape Water Supply System (WCWSS)



Percentage Water Stored in Major Dams (WCWSS)



CCT Daily Average Water Production (7 Day Avg)



CCT Water Quality Sample Pass Rate

Month	Water Quality Compliance (%)	Target (%)
Dec-16	99.65	98
Jan-17	99.63	98
Feb-17	99.64	98
Mar-17	99.67	98
Apr-17	99.67	98
May-17	99.71	98
Jun-17	99.65	98
Jul-17	99.62	98
Aug-17	99.59	98
Sep-17	99.57	98
Oct-17	99.49	98
Nov-17	99.44	98
Dec-17	99.43	98

Notes:

This table shows CCT drinking water quality compliance according to the South African National Standard 241:2015. Compliance, measured against all prescribed chemical and microbiological components, consistently exceeds the very high CCT target of 98%. (Overall compliance percentages of continuous sampling and analysis are released on a monthly basis. The latest available is for December.)

Rainfall

RAINFALL (mm)	16-Feb	17-Feb	18-Feb	19-Feb	20-Feb	21-Feb	22-Feb	Feb	
								Total*	LT Average
Blackheath Upper	0.0	0.0	0.0	0.0	0.0	0.0	0.0	12.0	14.1
Brooklands	0.0	0.0	0.0	0.0	0.0	0.0	0.0	13.0	22.5
Newlands	0.0	0.0	0.0	0.0	0.0	0.0	0.0	16.5	33.8
Steenbras	0.0	0.0	0.0	0.0	0.0	0.0	3.0	29.5	24.5
Table Mountain (Woodhead)	1.1	0.0	0.0	0.0	0.0	0.0	0.0	27.6	49.5
Theewaterskloof	0.0	0.0	0.0	0.0	0.0	0.0	0.0	5.0	21.2
Tygerberg	0.0	0.0	0.0	0.0	0.0	0.0	0.0	8.5	12.7
Voëlvlei	0.0	0.0	0.0	0.0	0.0	0.0	0.0	10.2	9.3
Wemmershoek	0.0	0.0	0.0	0.0	0.0	0.0	0.0	10.1	14.3
Wynberg	0.0	0.0	0.0	0.0	0.0	0.0	0.0	12.1	22.4

Notes: *Total/cumulative rainfall for month indicated above
LT: Long Term