

BORER BEETLE THREAT



The invasive borer beetle has now spread to the northern and southern suburbs of Cape Town. This pest poses a serious threat to our urban forest as infested trees need to be chipped immediately. We request residents to report sightings to the City so that we can come do an assessment.

How to contact the City:

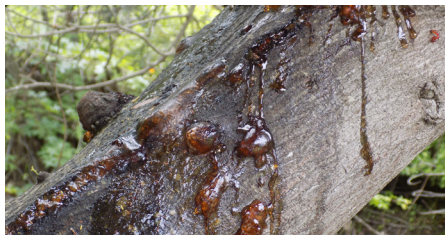
- Online, at www.capetown.gov.za/InvasiveSpecies
- Call 021 444 2357, Monday to Friday from 07:30 to 16:00
- Email: invasive.species@capetown.gov.za



Important: Do not remove infested trees from your property as it will spread the pest to other areas. Do not buy and move fire wood from areas with known PSHB infestation

Symptoms of infested trees:

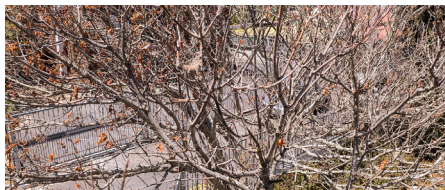
- Branch dieback - cracks on the branch, discoloured leaves, dry and leafless branches
- Gummy - blobs of goo coming out of the bark, oozing of liquid and gum from the beetle holes
- Very small entry and exit holes on the bark of the tree
- Staining - brown or dark stains on the bark of the tree from the property will spread the pest to other areas.



What to do:

- Chip the tree, place the infested material in refuse bags, seal it and put these in direct sunlight as the heat will help kill the beetle
- Dump the chips in your compost heap as the heat build-up in the composting process will kill the beetle
- Burn infested wood at appropriate incineration facility
- Burn it at appropriate incineration facility or bag and leave in the sun for minimum of 6 weeks.
- Seek assistance of properly trained & equipped service provider

Important: Pesticides and fungicides are not effective, the only way to get rid of the beetle is to chip the infested material.



**CITY OF CAPE TOWN
ISIXEKO SASEKAPA
STAD KAAPSTAD**