



2
Showing some TRU safety skills



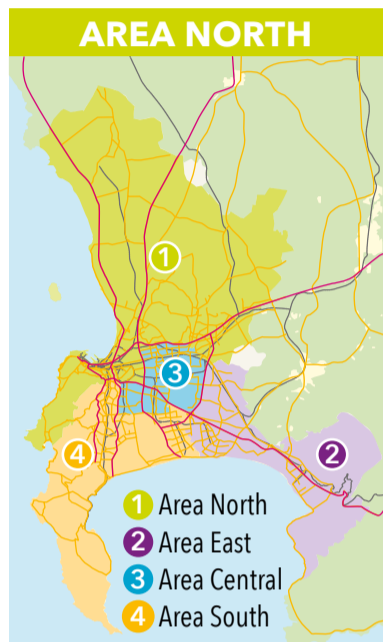
3
All systems go at Killarney



4
Big beach upgrades under way



4
Mow-ratorium in place until November

Bloomin' beautiful: Opened in 1979, the City's Durbanville rose garden spans 3,5 ha with an estimated 4 500 bushes of 500 rose cultivars. When in full bloom, the exquisite multicoloured display of roses frequently serves as the backdrop for wedding and other photo shoots.

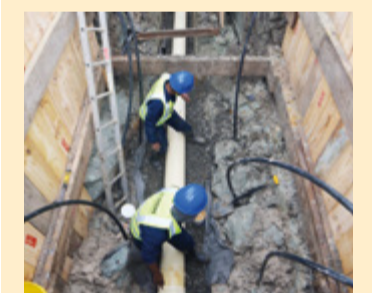
City replaces 29 000 metres of sewer pipes

In the past financial year, the City replaced 29 000 m of sewer pipeline. This included work in Democracy Way in Joe Slovo, Milnerton. The City is continuing this work in the new financial year, particularly in poor neighbourhoods where rapid densification has put huge pressure on the sewer network.

For the current financial year, pipe replacements are planned for Dunoon, Milnerton, Century City, Atlantis, Kraaifontein, Durbanville, Wallacedene, Maitland, Epping, Langa, Tokai, Denedal, Sweet Valley, Bergvliet, Mfuleni, Delft, Khayelitsha, Strand, Wesbank, Bellville, Philippi, Gugulethu and Uitsig.

The City considers various factors when identifying and prioritising pipes for replacement. These include comprehensive condition assessments to identify a need for capacity upgrades, structural failures reported by residents and depots, as well as geographic information systems (GIS) mapping. GIS technology allows the City to capture services information such as pipe sizes, locations, manholes and house connections.

Over the past 10 years, the City has invested more than R1 billion in replacing 235 689 m of sewer pipeline city-wide.



Democracy down under: New sewer pipe being installed in Democracy Way, Joe Slovo, to keep up with demand.

Rate our contact centre

Residents reporting service requests to the call centre on 0860 103 089 are invited to complete a post-call survey to help the City measure customer satisfaction, identify shortcomings and improve its service.

Once customers have spoken with a contact centre agent, they will be transferred to the survey – an interactive voice-response system that allows you to answer questions about your service and call experience.

This feedback will help the centre improve staff skills, processes and systems. The survey uses rating scales to measure changes over time. This offers a deeper understanding of whether the City meets the expectations of those who report service requests and faults. Any rating lower than 3 triggers an escalation, which results in a customer call-back within 24 hours to address their dissatisfaction.

Let's #SpringCleanCT together!

Get involved by organising a clean-up where it matters to you.

Want to join us in spring-cleaning the city? Get in touch with your local councillor, organise your own clean-up, or check for clean-up groups in your area.

Remember to encourage your friends, family, colleagues and community to get involved too.

To show your pride in our beautiful Mother City, tag your clean-up with #SpringCleanCT! Feel free to include us on Facebook (City of Cape Town and Mayor Geordin Hill-Lewis) and Twitter (@CityofCT and @Geordinhl).

Contact us on 0860 103 089, or visit capetown.gov.za/springclean for more information.



LET'S ACT FOR A CLEANER CAPE TOWN!

Report illegal dumping

If you witness illegal dumping, don't turn a blind eye. Take down the vehicle licence plate number and report it to us.

Offenders could be fined up to R5 000, have their vehicle impounded, or even face a two-year prison sentence.

For every report resulting in a fine and conviction, we offer a reward from R1 000 up to R5 000.

To report illegal dumping, email solidwaste.bylaw@capetown.gov.za or call 0800 110077.

Call 0860 103 089 to notify the City of dumping that needs to be cleared.

Follow your City on:



www.capetown.gov.za



www.facebook.com/CityofCT



www.twitter.com/CityofCT



www.youtube.com/cctecomm

KORTLIKS

Inwoners wat die oproepsentrum by 0860 103 089 bel om 'n diensversoek aan te meld, kan ná die oproep aanhou om 'n kort opname te voltooi. Die Stad gebruik die opname om kliëntetevredenheid te bepaal, tekortkominge te identifiseer en dienslewering te verbeter.

Die Stad het die afgelope boekjaar 29 000 m rioolpleiding vervang, waaronder in Democracy-weg in Joe Slovo, Milnerton.

Lus om die stad te help skoonmaak? Kontak jou plaaslike raadslid, reël jou eie lentregruk, of wees op die uitkyk vir skoonmaakgroepe in

jou omgewing.

As jy sien hoe iemand onwettig vullis stort, moenie anderpad kyk nie. Skryf die voertuig se registrasienommer neer en laat weet ons daarvan. Ons bied 'n beloning van tot R5 000 aan vir elke aanmelding wat tot 'n boete en skuldigbevinding lei.

Die Stad se Durbanville-roostuin, wat in 1979 geopen is, strek oor 3,5 ha en bevat na raming 4 500 roosbome van 500 verskillende kultivars. Dié tuin is gedurende blomtyd 'n gewilde agtergrond vir fotosessies.

KHAWUNDBALISELE

Abahlali abenza ingxelo yezicelo zeenkonzu kwiziko lokufowunela uncedo ku 0860 103 089 banokuthatha inxaxheba kuPhando lokukutsalwa komnxeba (loku-fowuna) lwesemva kokuba kuye kwaFowunwa, ukunceda iSixeko silinganise ukwaneliseka kwabathengi, sichunge ukusilela ukuze siphucule inkonzo yaso.

Kunyakamali odlulileyo, iSixeko sifakele ama29 000 emitha zombhobho welindle kuquka nomsebenzi eDemocracy Way, eJoe Slovo, eMilnerton.

Ingaba uyafuna ukuba nathi ekucceni isixeko? Qhagamshelana nocebha wengingqi yakho, cwangcisa okwakho ukucoca, okanye ujonge amaqela okucoca

kwindawo yakho.

Ukuba ubona ukulahlwa kwenkunkuma ngokungekho mthethweni, musa ukungakhathali. Thatha inombolo yepleyiti yesithuthi kwaye usixelele. Ngengxelo nganye ekhokelela kwisohlwayo kunye nokugwetywa, sinikezela ngebhaso elifikelela kumaR5 000.

Yavulwa ngo1979, iDurbanville Rose Garden yeSixeko ebude buzihetare ezi3,5 kunye namatyholo aqikelelwa kuma4 500 ezityalo zerozi. Xa idubula ngokupheleleyo, imbonakalo entle yeerozi ihlala ibonakala ngasemva kwiifoto.



City funds another mass animal sterilisation drive

In August, the City again partnered with animal welfare organisations in launching a mass animal sterilisation project. Since 2013, the City has disbursed nearly R6 million grant-in-aid funding to the Cape of Good Hope SPCA to facilitate mass sterilisation with member organisations in the Cape Animal Welfare Forum (CAWF).

The campaign, which includes sterilisation, a rabies vaccine and parasite control, has been rolled out in Imizamo Yethu and Hangberg (Hout Bay), Ocean View and Masiphumelele. The aim is to sterilise at least 70% of the animal population in these areas over the next three to six months.

City ups Safety and Security skills



The City's Tactical Response Unit (TRU) in the Safety and Security Directorate responds to incidents of civil unrest and public violence. The team, along with 20 Law Enforcement Advancement Plan (LEAP) officers, recently completed crowd management training provided by the South African Police Service (SAPS). The first-responder training covered the applicable legislation, techniques and tactical procedures that will allow officers to better support the SAPS public order policing units. LEAP officers also mastered the skills to better secure crime scenes they attend.

In return, the City will utilise its accredited Metro Police and Fire Training Academies to provide SAPS members with training in firefighting, high-angle rescue, first aid, health and safety, as well as frontline communication.

Subscribe to CityNews

If you would like CityNews delivered straight to your inbox, sign up at www.capetown.gov.za/subscribe.

CityNews Online is delivered every two weeks and includes recent highlights, service delivery notices, reminders and alerts.

CityNews is distributed as an insert to a number of community papers and is also available at City libraries.

Email: citynews@capetown.gov.za
 Fax: 021 400 1260
 Postal: PO Box 298, Cape Town 8000



Let's make our city sparkle for spring

Spring is here, and we are calling on you to help us spring-clean our beautiful Mother City together!

As Mayor, I am calling on residents, schools, businesses and community groups to join the #SpringCleanCT campaign.

Let's get our city looking sparkling clean and fresh this spring, including our parks, public spaces, beaches, rivers and roads.

Let's take pride in our city and show what's possible when we unite as Team Cape Town.

Change is easy: First, none of us should ever litter! Then, each one of us can tell someone to stop littering, or to pick up their litter when we see them doing it. And each of us can take a few seconds to pick up some litter ourselves.



A MESSAGE FROM EXECUTIVE MAYOR GEORDIN HILL-LEWIS

Together, we can keep our communities clean and put a stop to illegal dumping.

Doing more to clean up

This spring, we're putting a further 300 boots on the ground for cleaning up. Our law enforcement officials will also be stepping up enforcement against illegal dumping and issuing fines for littering.

Since the launch of our clean-up campaign earlier this year, over 110 clean-ups have been organised by community organisations and ward councillors.

To everyone who has joined our movement so far – thank you!

We are just getting started. Join us over the months ahead and let's #SpringCleanCT.

See you out there, and best wishes.

Vaccinate. Save jobs.

Protect yourself and those you work with.

Remain vigilant against Covid-19. Keep your distance. Wear a mask where needed. Wash your hands frequently. Avoid touching your face. Cough or sneeze with care, and safely dispose of the tissue.

The lowdown on how load-shedding works

To understand how load-shedding works practically, let's take Area 9 as an example. Area 9 is a mix of residential, commercial and industrial customers, and comprises Bishop Lavis Central and West, Bonteheuwel, Charlesville, Epping, Kalksteentfontein, Langa, Manenberg North, Montana, Montevideo, Pinelands, Thornton and Valhalla Park.

The area is served by three 11 KVA substations. As soon as the load-shedding period starts, these will be switched off one at a time. This, in turn, cuts the power to the low-voltage transformers that supply the residential, commercial and light industrial areas. The 11 KVA substations have many individual feeder circuits, much like the distribution board in your home. Not all will be switched off: For instance, some industries may have concluded agreements to lower their consumption to avoid disruption of their processes.

When the load-shedding period ends, Network Control will start restoring power to Area 9, bringing substations back online one at a time. Some low-voltage transformers may trip in the process, and not return to service. Although Network Control will be aware that the Area 9 loads are not what they should be, they have no way of identifying which particular transformers have tripped until residents report a fault. A work crew will then go out to attend to the culprit transformers.

A stage below puts us a step ahead

Like the rest of the country, Cape Town too relies on Eskom for almost all of its electricity supply.

Because the City can generate enough additional power, and cleverly reallocate it, Cape Town is normally a stage below when Eskom announces load-shedding. A 'stage' is roughly 1 000 MW of consumption that must be reduced across Eskom's national grid.

The City has a maximum installed power generation capacity of 260 MW. This is made up of the 180 MW Steenbras pumped storage scheme, commissioned in 1979 as the first in Africa, as well as two gas turbines in Athlone and Roggebaai respectively. These turbines are modified jet engines and are designed for brief 'peaking' operation only, with a generating capacity of 40 MW each.

The Steenbras scheme is the key component. When additional energy is needed, such as between 17:00 and 20:00 in winter, water flows down huge pipes from Steenbras Upper dam through four turbines to generate electricity. When demand is reduced and bulk electricity is cheaper, between 10:00 and 18:00, water is pumped back up from Steenbras Lower dam. In this way, the scheme acts like a

giant battery. There are operating losses, of course: Generating 42 MW of power requires 50 MW of pumping power to replace the water.

In practice, this City reserve capacity is seldom fully available, as it is influenced by the time of day, serviceability of turbines, dam levels and the like. Yet these resources do help with peaking power in an emergency. So does the City's load control system, which can reduce demand by as much as 45 MW by cutting back on the administration's own internal consumption.

Electricity is provided in 'blocks' comprising hundreds of consumers. Some blocks are never load-shed, including hospitals and key infrastructure such as airports and harbours, except as a last resort. The same goes for the central city and high-rise parts of town for the safety of people using elevators. Certain industries and businesses are so large that they have their own medium-voltage supply and have to run continuously, as unplanned shutdowns are catastrophic. Glassmaking, industrial gas production, smelting and many food-processing operations fall into this category, as do many City activities, such as water purification and wastewater

treatment, fire and rescue, security, disaster management services, and the City's call centre. High-density residential areas where lighting is a vital public safety issue are not subject to load-shedding either.

Juggling variable supply and demand across the City's grid really is an art form. It's done very carefully by skilful staff at the Bloemhof network control centre. Much of the City's substation infrastructure is switched remotely using SCADA (supervisory control and data acquisition) systems. These too require battery power, and under extreme load-shedding, the batteries do not recharge fully, and their life is shortened. This sometimes prevents a switch from being returned to service remotely. In addition, switches and transformers are not designed to be turned on and off as frequently as required by load-shedding. They are supposed to run at an optimum temperature, and after cooling down during outages, have to be restarted with a 'cold load pickup', which causes mechanical stress. The older the equipment – and some of it is 60 years old or more – the more likely it is to fail. This also leads to increased maintenance costs.

Good dam storage levels in the Western Cape

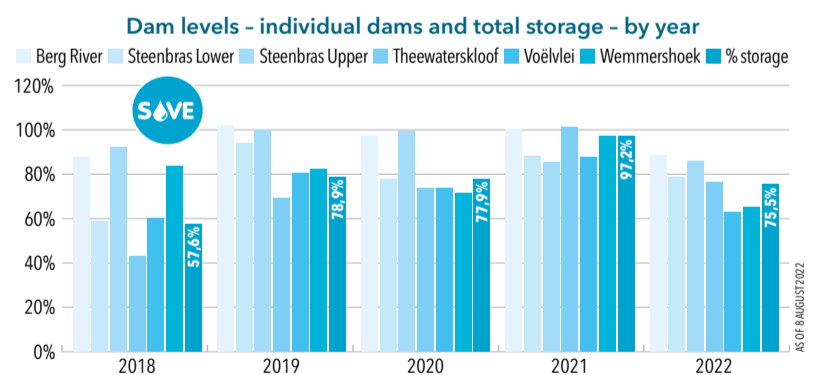
Due to higher rainfall over the previous months, the dam levels for Cape Town have increased to 75,5%. Yet the Western Cape remains a water-scarce region and Capetonians should still try to use less than 105 ℓ per person per day.

Protect our water resources by following water-wise guidelines. Residents and businesses are reminded that the permanent regulations contained in

the City's Water By-law still apply across Cape Town, regardless of the restriction level.

Municipal water may be used in gardens only before 09:00 or after 18:00, but never to hose down paved areas.

- Visit www.capetown.gov.za/thinkwater or www.capetown.gov.za/waterregulations to access the regulations.



KORTLIKS

Die Stad en dierewelsynorganisasies werk saam aan 'n massadiersterilisasiestog, wat in Augustus in Imizamo Yethu en Hangberg (Houtbaai), Ocean View en Masiphumelele van stapel gestuur is.

Burgemeester Geordin Hill-Lewis nooi inwoners, skole, ondernemings en gemeenskapsroepe om deel te neem aan die #SpringCleanCT-veldtog. Kom ons vier die lente met 'n silwerskoon stad!

Kaapstad maak hoofsaaklik op Eskom staat vir elektrisiteitsvoorsiening. Danksy die Steenbras-pompopgaarskema en twee gasturbines in Athlone en Roggebaai, kan die Stad egter genoeg bykomende krag opwek om gewoonlik een fase lichter beurkrag toe te pas as

wat Eskom aankondig.

Met beurkrag word elke area se substasies een vir een afgeskakel. Dit onderbreek die kragtoevoer na die laespanningtransformators wat die Moederstad se residensiële, kommersiële en ligtenywerheidsgebiede van krag voorsien. Nie alle kliënte se krag gaan af nie: Party fabrieke, hospitale, die hawe en lughawe bly aan.

Die Stad se taktiese reaksie-eenheid in die direktoraat veiligheid en sekuriteit reageer op burgerlike oproer en openbare geweld. Dié eenheid en 20 nuwe wetstoepassingsbeamptes het onlangs 'n skarebeheerkursus van die Suid-Afrikaanse polisie bygewoon.

KHAWUNDIBALISELE

KweyeThupha, iSixeko saphinda sasebenzisana nemibutho yentlalontle yezilwanyana kwiphulo elikhulu lokuvala inzala yezilwanyana elathi laqaliswa elimizamo Yethu naseHangberg (eHout Bay), eOcean View naseMasiphumelele. NjengoSodolophu, ndihlaba ikhwelo kubahali, izikolo, oosomashishini kunye namaqela oluntu ukuba bazibandakanye nephulo i#SpringCleanCT. Masifumane iSixeko sethu sijongeka sicocekile kwaye sisitsha kule ntwasahlobo.

iKapa lithembele kuEskom phantse kulo lonke unikezelo lombane. Ngenxa yokuba iSixeko sinokuvulisa amandla awongezelelweyo awoneleyo ngenxa yesikim sogcino olumpontshwayo iSteenbras kunye neethebhayini ezimbini zerhasi eAthlone naseRoggebaai, iKapa liqhelekile ukuba libe kwinqanaba elingezantsi xa uEskom ebhengeza ukucinywa kombane ngenjongo zokwehlisa umthwalo.

Ukuze uqonde indlela ukwehliswa komthwalo okusebenza ngayo, makhe sithathe uMmandla we9 njengomzekelo. UMmandla we9 ngumxube weendawo zokuhlala, ezentengiso kunye nabathengi bemizimveliso kwaye usetyenziswa zizitishi ezintathu ze11 KVA. Xa ixesha lokwehliswa komthwalo liqala, ezi ziyacinywa sibe sinye ngexesha. Ayizizo zonke ezicinywayo: Amanye amashishini anezivumelwano zokuthoba usetyenziso ukuthintela ukuphazamiseka kweenkqubo zawo.

iCandelo leeNdlalela zokuPhendula ngoBuchule leSixeko (iTRU) lisabela kwizehlo zodushe lwasekuhlaleni kunye nobundlobongela kuluntu. Iqela, kunye namagosa angama20 esicwangciso sokunyanzelisa komthetho (LEAP), kutshanje agqibe izifundo zolawulo lwabantu abaninzi ngeewekshophu ezenziwe ngabeSAPS.

Use water wisely leading up to summer

Cape Town's dam levels are at 75,5%, compared to 97,5% this time last year. Actual and projected figures indicate that rainfall this year will be below average. While there is no need for immediate concern, residents are encouraged to remain water-conscious and use water wisely.

Following a comprehensive study of potential long-term climate change impacts, the City is assuming a reduction of 25% in water availability from both surface and groundwater sources over a 30-year period. This is marginally more than initially assumed in the Water Strategy (2019) and is based on an innovative calculation methodology. The modelling also indicates that, as a result of climate change, rainfall is expected later in the typical rainfall season.

The City's New Water Programme aims to bring more water online to ensure a safe, reliable supply through groundwater abstraction, desalination and water reuse, as well as optimising surface supply through clearing thirsty invasive alien vegetation. This programme forms part of the City's Water Strategy, which aims to build resilience to the effects of climate change and ensure supply for generations to come. The programme seeks to produce approximately 300 million litres per day through groundwater abstraction, desalination and water reuse by 2030.

For more information on saving tips, restrictions and the Water Strategy, visit www.capetown.gov.za/thinkwater and www.capetown.gov.za/savewater.



New ways to pay your fines

Residents can pay traffic and by-law contravention fines (including warrant payments) via www.paythat.co.za.

FNB, Absa, Nedbank and Capitec customers can pay using Masterpass on their banking apps, or through SnapScan and Zapper.

Channels no longer available for payments include www.easypay.co.za, www.clicks.co.za and www.paycity.co.za.

For more information, visit www.capetown.gov.za.

Killarney International Raceway gears up

A new lease signed with the City secures the future of motor sport events in Cape Town, which contribute R357 million to the Mother City's economy.



The City has approved the new lease for Killarney International Raceway operated by the Western Province Motor Club (WPMC).

The transaction aims to secure the future of motor sport in Cape Town and celebrates 75 years of motor-racing success on the track. Killarney is Cape Town's most popular multipurpose event venue, having hosted 200 events per year before Covid, including 70 charity events.

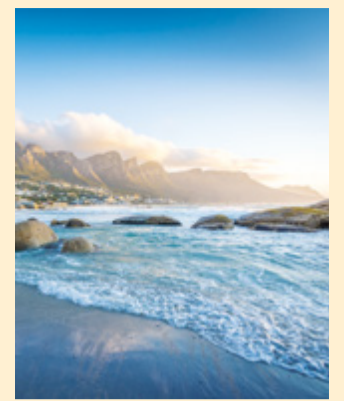
It is used for a range of motor and motorcycling events, but also non-motorised sporting events such as cycling, duathlons and marathons.

Motor sport contributes R357 million to Cape Town's economy and supports an extensive industry and thousands of jobs in race manufacturing, trading, servicing, repairs, parts and accessories. It also draws international and South African competitors, manufacturers,

fans and sponsors, who come for extended stays and investments.

The WPMC is a non-profit amateur sporting facility. Its operations model is to break even and retain enough income to maintain and improve the extensive facility. The new lease enables the WPMC to plan for the long term and actively recruit key international motor sport events for the benefit of racing fans, the industry, Cape Town's economy and tourism.

Going full throttle: Ald James Vos, Mayco member for Economic Growth, has announced the new lease with the Killarney raceway.



Get to know your coast

The City has released its third Know Your Coast report on coastal water quality, covering the period 1 December 2020 to 30 November 2021. It is based on the statistical analysis of 2 400 bacterial samples taken from 99 coastal sites along Cape Town's 307 km coastline, from Silwerstroomstrand on the Atlantic seaboard to Kogel Bay east of False Bay.

The City monitors these sampling points twice a month to improve knowledge of coastal water quality and help address problems as and when they arise. The 2021 Know Your Coast report is available at <https://bit.ly/KnowYourCoast2021>. Also available is a biweekly update on the latest sampling outcomes.

Social housing projects under way

The City has over 6 500 social units in the pipeline across town. These include 2 000 units in central Cape Town and 2 500 either nearing completion or about to be built along the Voortrekker Road corridor.

City-supported projects overseen by a developer include those in Pine Road (±240 units) and Dillon Road (±150 units) in Woodstock, as well as at Salt River market (±200 units). A 200-unit project in Maitland is also under construction. Projects undergoing land use management processes with a view to social housing include New Market (±200 units), Pickwick (±600 units), and Woodstock hospital (±700 units).

Projects driven by Province and supported by the City include the Conradie Park development in the inner-city feeder suburb of Pinelands, Founders Garden, and Helen Bowden nurses' home in Green Point. All have significant potential for social housing unit yields.

The need for more affordable



We build this city: Various social housing projects under way across Cape Town see the City working with state and private partners.

housing for those earning up to R22 000 per month is growing. To help meet this challenge, the City's Human Settlements Strategy explores how to deliver more affordable housing options in partnership with other state and private stakeholders, innovatively and at scale.

The broadening of the City's strategic role from regulator to greater enabler

of affordable housing is critical to help satisfy the demand for this housing category. To this end, the City partners with traditional private developers, emerging developers, social housing partners and households themselves.

For more information on the City's Human Settlements Strategy visit: <http://bit.ly/CCT-HSSstrategy>.

R235 million for new Urban Waste Management vehicles

The City has earmarked R235 million for the replacement of refuse removal vehicles in the current financial year. To date, 24 new compactors have been ordered at a value of R105 million. Fifteen drum replacements are also planned, where a new compactor unit is fitted to an existing chassis to save costs and keep tariffs as low as possible.

In addition, R45 million has been budgeted to replace earthmoving equipment that is used at landfills, refuse transfer stations and dumping hotspots. Smooth operations at landfills also help prevent delays in refuse collection and the clearing of illegal dumping.

Further vehicle orders will be placed in the coming weeks and months after engagements with suppliers on stock availability. The City needs to ensure that suppliers will be available to deliver on planned orders before the end of the current financial year to avoid a possible budget underspend.

KORTLIKS

Kaapstad se damvlakke staan tans op 75,5%, teenoor 97,5% dié tyd verlede jaar. Werklike en verwagte syfers dui daarop dat reënval vanjaar ondergemiddeld sal wees. Hoewel daar geen onmiddellike rede tot kommer is nie, word inwoners aangemoedig om waterbewus te bly en elke druppel verstandig te gebruik.

Die Stad het die nuwe huurooreenkoms vir die Killarney-renbaan goedgekeur. Die transaksie sal die toekoms van motorsport verseker, en vier 75 jaar van dié sport in Kaapstad. Motorsport dra sowat R357 miljoen tot die Moederstad se ekonomie by en voorsien duisende werksgeleenthede.

Die Stad het sy derde Know Your Coast-verslag oor kuswatergehalte uitgegee, dié keer oor die tydperk 1 Desember 2020 tot 30 November 2021.

Dit is gegrand op die statistiese ontleding van 2 400 bakteriese monsters wat by 99 plekke aan die Kaapse kus geneem is.

Meer as 6 500 sosialebehuisingseenhede word tans hetsy gebou of beplan. Dit sluit in 2 000 eenhede in die Kaapse middestad en 2 500 in die Voortrekkerwegkorridor.

Inwoners kan verkeers- en ander Stadsboetes via www.paythat.co.za betaal. FNB-, Absa-, Nedbank- en Capitec-klieënte kan ook met Masterpass op hulle banktoepassings betaal, of deur Snapscan en Zapper.

Die Stad het dié boekjaar R235 miljoen opsygesit om vullisvoertuie te vervang. Altesaam 24 nuwe vuilgoedwaens met vullisperse ter waarde van R105 miljoen is tot dusver bestel. Vyftien bestaande waens se vullisperse sal boonop vervang word.

KHAWUNDIBALISELE

Amanqanaba amadama aseKapa akuma75,5%, xa kuthelakiswa nama97,5% ngeli xesha kunyaka ophelileyo. Awona manani kunye naqikelelwayo abonisa ukuba imvula kulo nyaka iza kuba ngaphantsi komlinganiselo olindelekileyo. Nangona kungekho mfuneko yakuxhalaba engxamisekileyo, abahlali bayakhuthazwa ukuba bahlale bewakhathalele amanzi kwaye bawasebenzise ngobulumko.

ISixeko siphumeze uqeshiso olutsha kwiKillarney International Raceway. Le ntengiselwano ijolise ekukhuseleni Ikamva lemidlalo yeemoto kwaye ibhiyozela iminyaka engama75 yelifa lemveli. Lo mdlalo ugalela izigidi ezingamaR357 kuqoqosho lweSixeko saseKapa njengamawaka emisebenzi.

ISixeko sikhuphe ingxelo yaso yesithathu yeYazi uNxweme Lwakhoyomgangatho wamanzi aselunxwemeni, abandakanya ixesha elisusela kowuku1 kweyoMnga 2020 ukuya kowam30 kweyeNkanga 2021. Isekelwe kuhlalutyo lweenkukacha manani eesampuli zebhaktheriya

ezingama2 400 ezithathwe kwiindawo ezingama99 eziselunxwemeni lwaseKapa.

ISixeko sineeyunithi zentlalo ezingaphezulu kwama6 500 kwidolophu yonke. Ezi zibandakanya iiyunithi ezingama2 000 kumbindi weKapa kunye nama2 500 asele eza kugqitywa okanye sele ezakwakhwa kwipaseji yeNdlela iVoortrekker Road.

Abahlali banokuhlalula imirhumo kunye nezaziso zokwaphula umthetho kamasipala (kubandakanya neentlawulo ezigunyazisayo) ngokusebenzisa iwebhusayithi engu www.paythat.co.za. Abathengi bakwaFNB, Absa, Nedbank kunye noCapitec banokuhlalula besebenzisa iMasterpass kwii-app zabo zebhanki okanye zeSnapscan kunye neZapper.

ISixeko sibekela bucala amaR235 ezigidi zeerandi okutshintsha izithuthi zenkunkuma kulo nyakamali. Ukuza kuthi ga ngoku, izithuthi zenkunkuma ezintsha ezingama24 ziodolwe ngexabiso leR105 lezigidi zeerandi kunye ne15 lokutshintsha kwemigqomo kuwangcisiwe.

City commences with Milnerton beach revetment project

The installation of a geo-revetment at Milnerton beach started in August and will continue over the next ten months.

The revetment, which comprises sand-filled geo-containers custom-designed for the marine environment, will form a stabilising, defensive barrier against coastal erosion. This will protect adjacent infrastructure and buildings.

In addition to replacing the current concrete revetment with the geo-containers, work includes demolishing the damaged concrete stairs and lifesavers' ramp, and repairing and upgrading the beach access ramp next to the Milnerton golf clubhouse.

A portion of the beachfront where heavy machinery will be operating will be closed to the public. Visitors are advised to keep away from the cordoned-off area. Residents will have access to the rest of the beach and ablution facilities throughout the construction period.

Dune rehabilitation at Table View beachfront

A long-term rehabilitation project will revitalise this prime tourist attraction.



As part of a longer-term initiative to revitalise and maintain the Table View beachfront, dune rehabilitation is under way. The project will continue until June 2024. Work will be carried out along a 3 km stretch of coastline from Dolphin Beach in the south to Bokkombaai in the north. The aim is to rehabilitate the dune system, improve pedestrian access to the beach, implement sand management and upgrade various facilities, services and infrastructure.

Table View beach has an iconic view of Table Mountain and is a favourite kite-surfing spot. Unfortunately, over

the past 15 years, the public amenities and coastal infrastructure have deteriorated due to the impact of the local environment. The dune cordon has lost its ability to protect the surrounding infrastructure from windblown sand. Parking facilities, beach access and stormwater infrastructure are in urgent need of repair and replacement.

Sand will be moved with bulldozers, excavators and dump trucks to reinstate the dunes, covering an area of 8 ha. Once profiled, the dunes will be stabilised using wind nets placed perpendicular to the dominant wind direction, and

revegetated with suitable dune-specific plant species. Irrigation will also be installed.

The work will take place on weekdays, weather permitting. The beach will be open to the public, but areas where work is taking place should be avoided and dogs kept on leads.

The project also includes the demolition of derelict ablution blocks and other infrastructure currently buried by the mobile dune system. Temporary ablutions will be provided, as the new facilities will only be built after the dune work has been completed.



Let them bloom

The City's 'no mowing' policy during late winter and early spring means parks, public open spaces, greenbelts and road verges will only be mowed at the end of November to allow for spring flowers and indigenous plants to bloom. This is to conserve and protect plant species such as fynbos, allowing them to complete their annual growth cycle between August and November. Some areas serve as conservation corridors by linking up with open spaces, nature reserves and national parks, ensuring a healthy network of interconnected environments. When flowering, the areas will be transformed into fields of colour with various spring flowers for residents to enjoy and pollination to take place.

For a list of the areas where mowing is suspended or being done partially, visit www.capetown.gov.za/mowing.

To add a community park or green space in your area to the list, email RP.Enquiries@capetown.gov.za, with the location, some evidence of the flowers found there, and support from neighbours living in close proximity to the area.

Facelift for City community and health facilities

The City will spend R244 million on capital projects this financial year to upgrade its community and health facilities. Projects include cemetery expansions, upgrading Maitland crematorium, and work on Hartleyvale stadium, Bishop Lavis sports ground and the Elsie River, Mfuleni and Mandela Park integrated recreation facilities. Also, the City will add precast concrete walls at Avonwood, Lenteguur, Florida Park and Salberau sports grounds, redevelop swimming pools, upgrade clinics, improve Lwandle community library, and modernise IT.

Jobs Connect a link to opportunity



Since its launch in April 2021, the City's Jobs Connect programme has visited 13 communities across Cape Town to provide job seekers with knowledge, training and employment opportunities, focusing on residents who do not have other means to access opportunities. It also links small businesses and corporates to the talent they need.

To date, 60 000 people have been registered and assessed on Jobs Connect, which also helps work seekers access education and training to enhance their employability.

How does it work?

- Job seekers can register online at <http://jobsconnect.leelyn.co.za> (a zero-rated website for MTN and Vodacom users) and complete a literacy and numeracy assessment. The results will be added to a digital CV, which can also be printed.
- Business owners in need of staff can register as an employer via info@leelyn.co.za.

KORTLIKS

Die installering van 'n geo-keermuur aan die kus by Milnerton het in Augustus begin en sal sowat tien maande duur. Die doel is om die ontspanningsfasiliteite en ander geriewe en geboue in die omgewing teen kus-erosie te beskerm.

As deel van 'n langertermyn-inisiatief om die Table View-strand te vernuwe en in stand te hou, is 'n duinrehabilitasieprojek aan die gang. Werk strek oor sowat 3 km en sal tot Junie 2024 duur.

Die Stad sny nie in die laat winter en vroeë lente die gras in sy parke, openbare oop ruimtes, groenstroeke en op padrande nie. Sodoende kry lentebloem en inheemse plante kans om hulle jaarlikse groeisyklus te voltooi en te blom. Grassnyaktiwiteite sal weer aan die einde van

November begin.

Hierdie boekjaar sal die Stad R244 miljoen bestee aan kapitaalprojekte om sy gemeenskap en gesondheidsfasiliteite op te knap.

Sedert dit in April 2021 bekend gestel is, het die Stad se Jobs Connect-program reeds 13 gemeenskappe besoek om werksoekers met inligting, opleiding en moontlike werkseleenthede by te staan. Die klem val op inwoners wat nie andersins die middele het om toegang tot geleenthede te bekom nie.

KHAWUNDIBALISELE

Ufakelwela kobiyelo ngamatyana agudileyo (irivethimenti) kunxweme lweaseMilnerton luqale kweyeThupha kwaye luza kuqhubeka kwisithuba seenyanga ezilishumi ezizayo. Injongo yeprojekthi kukugcina nokuphucula izibonelelo zolonwabo kunye namaziko.

Njengexal'nyene yenyathelo yexesha elide lokuvuselela nokugcina indawo engaselunxwemeni eTableview, ukuvuselelwa kweengqumba zentlabathi kuyaqhubeka. Iprojekthi, kumgama ozikhilomitha ezi3 iya kuqhubeka de ibe yeyeSilimela 2024.

Umgqonkqubo weSixeko 'wokungachetywa' ekupheleni kobusika nasekuqaleni kwentlakohlaza uthetha ukuba iipaki, iindawo ezivulekileyo zoluntu, iibhanti eziluhlaza, kunye nemida yendlela ziya kuchetywa kuphela ekupheleni kweyeNkanga,

ukuvumela iintyantyambo zasentwasahlobo kunye nezemveli zigqibezele umjikelo wokukhula wonyaka kunye nokuqhakaza.

ISixeko siza kuchitha amaR244 ezigidi zeerandi kwiiprojekthi ezinkulu kulo nyaka mali ukuze kuphuculwe uluntu kunye namaziko ezempilo.

Ukususela ekusungulweni kwayo kuTshazimpuzi ka2021, inkqubo yeSixeko yoQhagamshelwano lwezeMisebenzi ityelele iindawo zokuhlala ezili13 kwiKapa liphela ukubonelela abantu abafuna umsebenzi ngolwazi, uqeqesho namathuba engqesho, kugxilwe kubahlali abangenazo iindlela zokufikelela kumathuba.

CITY OF CAPE TOWN AND AREA NORTH CONTACT NUMBERS

Accounts and general enquiries

Tel 0860 103 089 (option 1)
Fax 0860 103 090
Email accounts@capetown.gov.za
..... contact.us@capetown.gov.za

Alcohol and drug helpline (24/7)

Tel 0800 HELP 4 U (0800 435 748)

Anti-corruption and fraud hotline

Tel (anonymous, toll-free) .. 0800 323 130

Cable theft

All-hours tel 0800 222 771

Public transport (toll-free)

Information centre 0800 656 463
Dial-a-Ride 0800 600 895

Drought and water

www.capetown.gov.za/thinkwater

Report and track faults

www.capetown.gov.za/servicerequests

e-Services

www.capetown.gov.za/eServices

Contact the City

www.capetown.gov.za/contacts

Budget

www.capetown.gov.za/budget

Tariffs

www.capetown.gov.za/tariffs

Policies and by-laws

www.capetown.gov.za/policies

Council matters

www.capetown.gov.za/council

AREA NORTH CONTACT DETAILS

Director: Subcouncils Area North

Zolile Siswana

Tel 021 444 6174

Cape Town Civic Centre, 12 Hertzog

Boulevard, Cape Town

Subcouncil 1

Tel 021 444 6037

Cnr Grosvenor and Hermes avenues,

Saxonsea, Atlantis

Subcouncil 2

Tel 021 444 7521/0675

Municipal offices, Brighton Road,

Kraaifontein

Subcouncil 3

Tel 021 444 4862

Municipal offices, Royal Ascot, Bridle Way,

Milnerton

Subcouncil 7

Tel 021 444 0689

Municipal offices, Oxford Street,

Durbanville

Subcouncil 15

Tel 021 444 9797

Pinelands Training Centre, St Stephens

Road, Central Square, Pinelands

Subcouncil 16

Tel 021 487 2055

11th floor, 44 Wale Street, Cape Town



FOR EMERGENCIES CALL
021 480 7700
FROM ANY PHONE OR
107 FROM A LANDLINE



Find a programme,
apply for a service,
access online
applications and more
at City Connect at
www.capetown.gov.za.