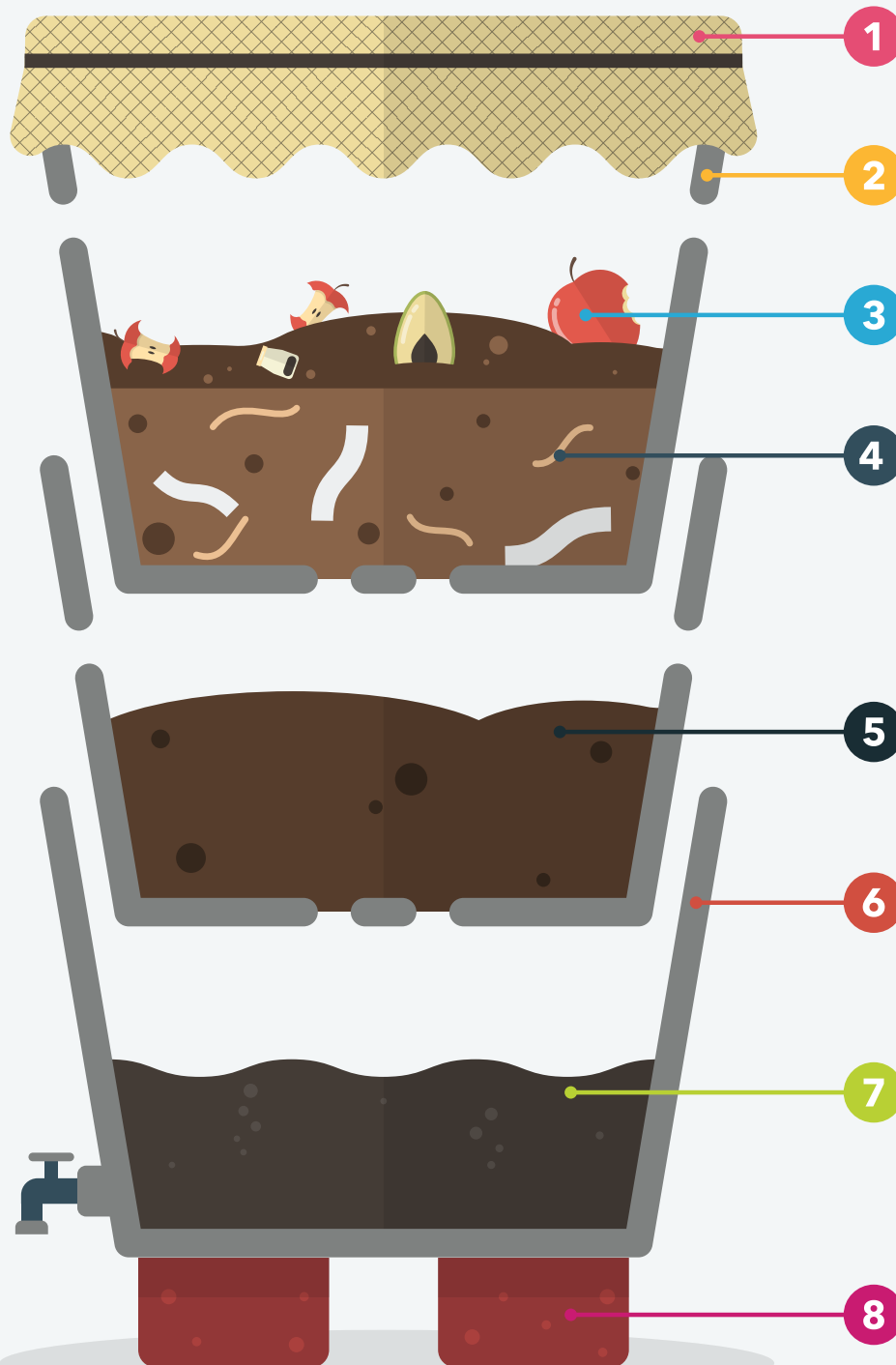


# HOW TO START A WORM BIN



## Lid

Cover the exposed container with a plastic or hessian lid.

## Holes

Drill holes on the side and bottom of the first two containers for air and drainage

## Fruit and vegetables

Add leftover fruit and vegetable cuttings on top of the worm bed. Don't add any meat.

## Worm bed

Make a warm, moist bed for your worms with soil and shredded newspaper. Put 50-100 worms in the container.

## Compost

The compost produced by the worms will collect here. This can be mixed with soil and used to grow your own fruits, vegetables, and herbs.

## Containers

Use containers made from plastic, drawers, bins or wooden boxes.

## Worm "tea"

Your worm farm will produce a liquid that gathers in the bottom container. This is a 'super food' for plants. Mix 1 cup with 3 litres of water and use this mixture to water your plants. If possible, add a tap to the bottom container so you can easily collect the worm "tea".

## Bricks

Add two or more bricks to support the bottom container. This will also make it easier to collect the worm "tea".



CITY OF CAPE TOWN  
ISIXEKO SASEKAPA  
STAD KAAPSTAD

Making progress possible. Together.