

City of Cape Town – 2011 Census Suburb Bishop Lavis

July 2013

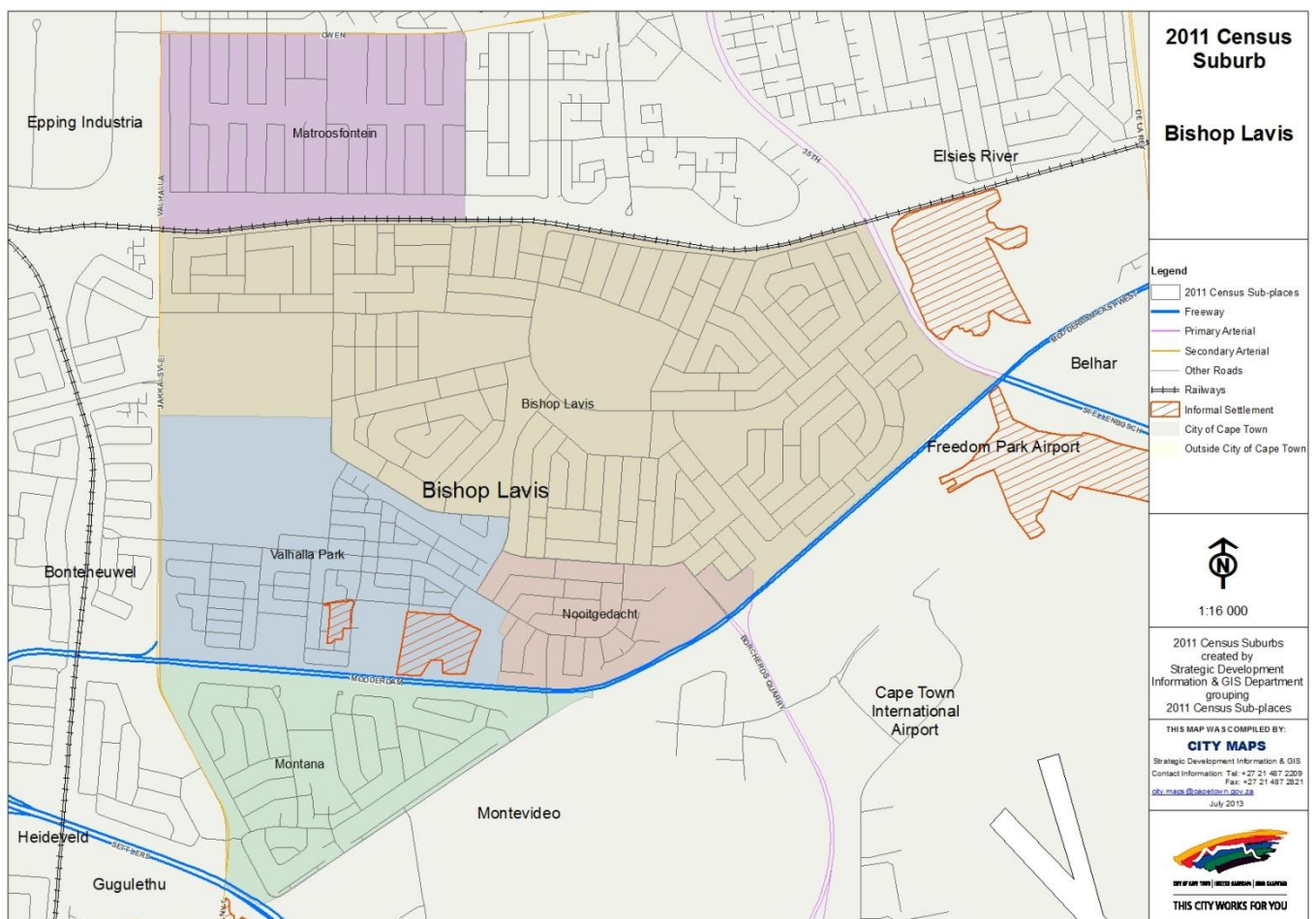
Compiled by Strategic Development Information and GIS Department (SDI&GIS), City of Cape Town
2011 Census data supplied by Statistics South Africa
(Based on information available at the time of compilation as released by Statistics South Africa)

The 2011 Census suburbs (190) have been created by SDI&GIS grouping the 2011 Census sub-places using GIS and December 2011 aerial photography. A sub-place is defined by Statistics South Africa “is the second (lowest) level of the place name category, namely a suburb, section or zone of an (apartheid) township, smallholdings, village, sub-village, ward or informal settlement.”

[Suburb Overview](#), [Demographic Profile](#), [Economic Profile](#), [Dwelling Profile](#), [Household Services Profile](#)

2011 Census Suburb Description

2011 Census suburb Bishop Lavis includes the following sub-places: Bishop Lavis, Matroosfontein, Montana, Nootgedacht, Valhalla Park.



Data Notes:

- The following databases from Statistics South Africa (SSA) software were used to extract the data for the profiles:
Demographic Profile – Descriptive and Education databases
Economic Profile – Labour Force and Head of Household databases
Dwelling Profile – Dwellings database
Household Services Profile – Household Services database
- In some Census suburbs there may be no data for households, or a very low number, as the Census suburb has population mainly living in collective living quarters (e.g. hotels, hostels, students' residences, hospitals, prisons and other institutions) or is an industrial or commercial area. In these instances the number of households is not applicable. All tables have the data included, even if at times they are "0", for completeness. The tables relating to population, age and labour force indicators would include the population living in these collective living quarters.
- The Census suburbs where the population is categorised as living mainly in collective living quarters or is an industrial or commercial area, the average household size has been excluded as it is not applicable. There are some Census suburbs with an average household size that have a small percentage of the population living in collective living quarters within that Census suburb, and this could artificially inflate the average household size.

2011 Census Suburb Overview

2011 Census Suburb Bishop Lavis	2011
Population	54 006
Households	11 211
Average Household Size	4.82

In 2011 the population of 2011 Census suburb Bishop Lavis was 54 006 and the number of households was 11 211. The average household size was 4.82.

A household is defined as a group of persons who live together, and provide themselves jointly with food or other essentials for living, or a single person who lives alone (Statistics South Africa).

The population and household numbers above are to be used and quoted as the official numbers for this 2011 Census suburb for 2011.

Key results for 2011 Census Suburb Bishop Lavis:

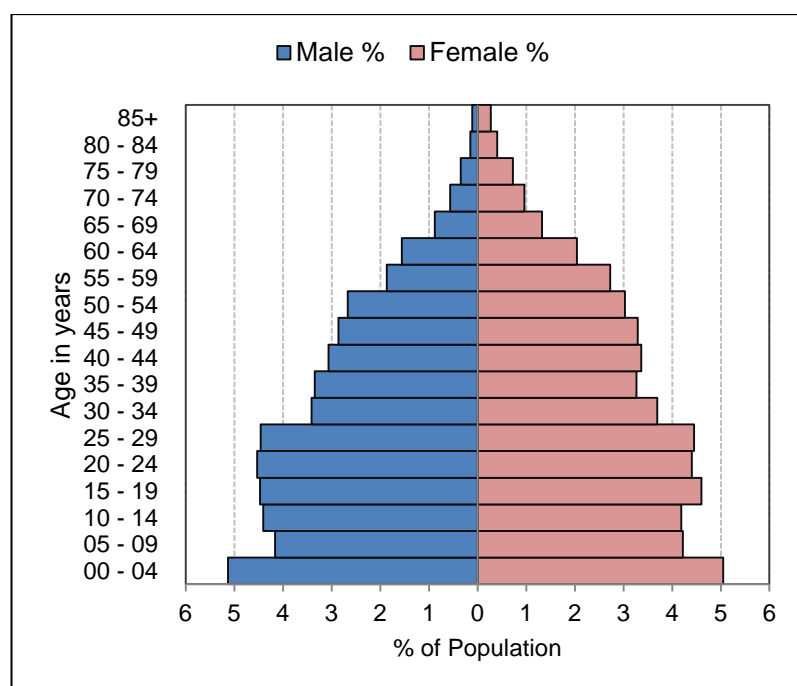
- The population is predominantly Coloured (92%).
- 28% of those aged 20 years and older have completed Grade 12 or higher.
- 74% of the labour force (aged 15 to 64) is employed.
- 47% of households have a monthly income of R3 200 or less.
- 81% of households live in formal dwellings.
- 98% of households have access to piped water in their dwelling or inside their yard.
- 92% of households have access to a flush toilet connected to the public sewer system.
- 99% of households have their refuse removed at least once a week.
- 99% of households use electricity for lighting in their dwelling.

Note: There are small variations in the total population and the number of households in the tables which follow. These occur as Statistics South Africa had to calculate the true population to correct omissions and double counts in the enumeration process. In addition when the data is extracted using the Statistics South Africa software, it randomly rounds off all cells to a base number 3, including the totals. These variations are not significant.

[Go to top of document](#)

Demographic Profile – 2011 Census

Bishop Lavis Population	Male		Female		Total	
	Num	%	Num	%	Num	%
Black African	1 469	2.7%	1 484	2.7%	2 953	5.5%
Coloured	23 772	44.0%	26 046	48.2%	49 818	92.2%
Asian	122	0.2%	106	0.2%	228	0.4%
White	24	0.0%	35	0.1%	59	0.1%
Other	527	1.0%	420	0.8%	947	1.8%
Total	25 914	48.0%	28 091	52.0%	54 005	100.0%



Bishop Lavis Age	Black African		Coloured		Asian		White		Other		Total	
	Num	%	Num	%	Num	%	Num	%	Num	%	Num	%
0 to 4 years	297	10.1%	5 085	10.2%	25	11.0%	5	8.5%	86	9.1%	5 498	10.2%
5 to 14 years	522	17.7%	8 441	16.9%	43	18.9%	4	6.8%	158	16.7%	9 168	17.0%
15 to 24 years	532	18.0%	8 940	17.9%	52	22.8%	12	20.3%	191	20.1%	9 727	18.0%
25 to 64 years	1 474	49.9%	24 443	49.1%	97	42.5%	32	54.2%	469	49.5%	26 515	49.1%
65 years and older	129	4.4%	2 909	5.8%	11	4.8%	6	10.2%	44	4.6%	3 099	5.7%
Total	2 954	100.0%	49 818	100.0%	228	100.0%	59	100.0%	948	100.0%	54 007	100.0%

Bishop Lavis Adult Education (for all aged 20+)	Black African		Coloured		Asian		White		Other		Total	
	Num	%	Num	%	Num	%	Num	%	Num	%	Num	%
No schooling	30	1.6%	660	2.1%	0	0.0%	0	0.0%	54	8.6%	744	2.2%
Some primary	144	7.7%	4 263	13.5%	24	18.6%	3	6.3%	75	12.0%	4 509	13.2%
Completed primary	90	4.8%	2 673	8.5%	21	16.3%	3	6.3%	48	7.7%	2 835	8.3%
Some secondary	567	30.3%	15 729	49.8%	45	34.9%	15	31.3%	297	47.4%	16 653	48.6%
Grade 12	453	24.2%	6 780	21.5%	33	25.6%	21	43.8%	138	22.0%	7 425	21.7%
Higher	576	30.8%	1 419	4.5%	3	2.3%	6	12.5%	12	1.9%	2 016	5.9%
Other	9	0.5%	81	0.3%	3	2.3%	0	0.0%	3	0.5%	96	0.3%
Total	1 869	100.0%	31 605	100.0%	129	100.0%	48	100.0%	627	100.0%	34 278	100.0%

[Go to top of document](#)

Economic Profile – 2011 Census

Bishop Lavis Labour Force Indicators	Black African	Coloured	Asian	White	Other	Total
Population aged 15 to 64 years	2 007	33 381	147	45	663	36 243
Labour Force	1 308	18 882	72	30	408	20 700
Employed	1 056	13 848	63	21	297	15 285
Unemployed	252	5 034	9	9	111	5 415
Not Economically Active	699	14 499	75	15	255	15 543
Discouraged Work-seekers	48	1 182	9	0	15	1 254
Other not economically active	651	13 317	66	15	240	14 289
Rates %						
Unemployment rate	19.27%	26.66%	12.50%	30.00%	27.21%	26.16%
Labour absorption rate	52.62%	41.48%	42.86%	46.67%	44.80%	42.17%
Labour Force participation rate	65.17%	56.57%	48.98%	66.67%	61.54%	57.11%

Definitions:

Unemployment rate is the proportion of the labour force that is unemployed.

The **labour absorption rate** is the proportion of working age (15 to 64 years) population that is employed.

The **labour force participation rate** is the proportion of the working age population that is either employed or unemployed.

Note: Based on available data as supplied by Statistics South Africa, the people categorised as living in collective living quarters are included in the "Other not economically active" category.

Bishop Lavis Monthly Household Income	Black African		Coloured		Asian		White		Other		Total	
	Num	%	Num	%	Num	%	Num	%	Num	%	Num	%
No income	54	7.9%	1 089	10.6%	3	8.3%	0	0.0%	9	5.5%	1 155	10.3%
R 1 - R 1 600	75	11.0%	1 899	18.4%	9	25.0%	0	0.0%	30	18.2%	2 013	18.0%
R 1 601 - R 3 200	69	10.1%	2 019	19.6%	6	16.7%	0	0.0%	36	21.8%	2 130	19.0%
R 3 201 - R 6 400	99	14.5%	2 319	22.5%	6	16.7%	3	33.3%	48	29.1%	2 475	22.1%
R 6 401 - R 12 800	117	17.1%	1 734	16.8%	6	16.7%	0	0.0%	30	18.2%	1 887	16.8%
R 12 801 - R 25 600	108	15.8%	879	8.5%	3	8.3%	3	33.3%	9	5.5%	1 002	8.9%
R 25 601 - R 51 200	123	18.0%	309	3.0%	3	8.3%	0	0.0%	3	1.8%	438	3.9%
R 51 201 - R 102 400	30	4.4%	45	0.4%	0	0.0%	0	0.0%	0	0.0%	75	0.7%
R 102 401 or more	9	1.3%	27	0.3%	0	0.0%	3	33.3%	0	0.0%	39	0.3%
Unspecified	0	0.0%	0	0.0%	0	0.0%	0	0.0%	0	0.0%	0	0.0%
Total	684	100.0%	10 320	100.0%	36	100.0%	9	100.0%	165	100.0%	11 214	100.0%

[Go to top of document](#)

Dwelling Profile – 2011 Census

Bishop Lavis Type of Dwelling	Black African		Coloured		Asian		White		Other		Total	
	Num	%	Num	%	Num	%	Num	%	Num	%	Num	%
Formal Dwelling	619	90.9%	8 270	80.2%	30	83.3%	12	80.0%	130	80.2%	9 061	80.8%
Informal dwelling / shack in backyard	51	7.5%	1 835	17.8%	5	13.9%	2	13.3%	24	14.8%	1 917	17.1%
Informal dwelling / shack NOT in backyard	6	0.9%	105	1.0%	1	2.8%	0	0.0%	6	3.7%	118	1.1%
Other	5	0.7%	106	1.0%	0	0.0%	1	6.7%	2	1.2%	114	1.0%
Total	681	100.0%	10 316	100.0%	36	100.0%	15	100.0%	162	100.0%	11 210	100.0%

Bishop Lavis Tenure Status	Black African		Coloured		Asian		White		Other		Total	
	Num	%	Num	%	Num	%	Num	%	Num	%	Num	%
Owned and fully paid off	158	23.2%	4 935	47.8%	12	33.3%	7	46.7%	29	17.8%	5 141	45.9%
Owned but not yet paid off	267	39.3%	1 339	13.0%	9	25.0%	5	33.3%	16	9.8%	1 636	14.6%
Rented	232	34.1%	3 554	34.5%	12	33.3%	3	20.0%	112	68.7%	3 913	34.9%
Occupied rent-free	15	2.2%	246	2.4%	2	5.6%	0	0.0%	3	1.8%	266	2.4%
Other	8	1.2%	242	2.3%	1	2.8%	0	0.0%	3	1.8%	254	2.3%
Total	680	100.0%	10 316	100.0%	36	100.0%	15	100.0%	163	100.0%	11 210	100.0%

[Go to top of document](#)

Household Services Profile – 2011 Census

Bishop Lavis Access to Piped Water	Black African		Coloured		Asian		White		Other		Total	
	Num	%	Num	%	Num	%	Num	%	Num	%	Num	%
Piped water inside dwelling	645	94.3%	9 195	89.1%	30	83.3%	12	80.0%	147	90.7%	10 029	89.4%
Piped water inside yard	30	4.4%	903	8.8%	3	8.3%	3	20.0%	12	7.4%	951	8.5%
Piped water outside yard: < 200m	3	0.4%	96	0.9%	0	0.0%	0	0.0%	0	0.0%	99	0.9%
Piped water outside yard: > 200m	0	0.0%	15	0.1%	0	0.0%	0	0.0%	0	0.0%	15	0.1%
No access to piped water	6	0.9%	111	1.1%	3	8.3%	0	0.0%	3	1.9%	123	1.1%
Total	684	100.0%	10 320	100.0%	36	100.0%	15	100.0%	162	100.0%	11 217	100.0%

Bishop Lavis Toilet Facility	Black African		Coloured		Asian		White		Other		Total	
	Num	%	Num	%	Num	%	Num	%	Num	%	Num	%
Flush toilet (connected to sewerage system)	651	95.2%	9 420	91.4%	30	83.3%	15	100.0%	144	87.3%	10 260	91.5%
Flush toilet (with septic tank)	9	1.3%	150	1.5%	3	8.3%	0	0.0%	0	0.0%	162	1.4%
Chemical toilet	0	0.0%	3	0.0%	0	0.0%	0	0.0%	0	0.0%	3	0.0%
Pit toilet with ventilation (VIP)	3	0.4%	12	0.1%	0	0.0%	0	0.0%	0	0.0%	15	0.1%
Pit toilet without ventilation	0	0.0%	3	0.0%	0	0.0%	0	0.0%	0	0.0%	3	0.0%
Bucket toilet	9	1.3%	186	1.8%	0	0.0%	0	0.0%	9	5.5%	204	1.8%
Other	3	0.4%	186	1.8%	0	0.0%	0	0.0%	3	1.8%	192	1.7%
None	9	1.3%	351	3.4%	3	8.3%	0	0.0%	9	5.5%	372	3.3%
Total	684	100.0%	10 311	100.0%	36	100.0%	15	100.0%	165	100.0%	11 211	100.0%

Bishop Lavis Refuse Disposal	Black African		Coloured		Asian		White		Other		Total	
	Num	%	Num	%	Num	%	Num	%	Num	%	Num	%
Removed by local authority/private company at least once a week	675	98.7%	10 245	99.4%	36	100.0%	15	100.0%	159	94.6%	11 130	99.3%
Removed by local authority/private company less often	6	0.9%	6	0.1%	0	0.0%	0	0.0%	3	1.8%	15	0.1%
Communal refuse dump	0	0.0%	39	0.4%	0	0.0%	0	0.0%	0	0.0%	39	0.3%
Own refuse dump	0	0.0%	9	0.1%	0	0.0%	0	0.0%	3	1.8%	12	0.1%
No rubbish disposal	3	0.4%	3	0.0%	0	0.0%	0	0.0%	0	0.0%	6	0.1%
Other	0	0.0%	9	0.1%	0	0.0%	0	0.0%	3	1.8%	12	0.1%
Total	684	100.0%	10 311	100.0%	36	100.0%	15	100.0%	168	100.0%	11 214	100.0%

[Go to top of document](#)

Household Services Profile continued – 2011 Census

Bishop Lavis Energy used for Lighting	Black African		Coloured		Asian		White		Other		Total	
	Num	%	Num	%	Num	%	Num	%	Num	%	Num	%
Electricity	678	99.6%	10 203	98.9%	33	91.7%	15	100.0%	159	96.4%	11 088	98.9%
Gas	0	0.0%	21	0.2%	0	0.0%	0	0.0%	3	1.8%	24	0.2%
Paraffin	0	0.0%	6	0.1%	0	0.0%	0	0.0%	0	0.0%	6	0.1%
Candles	0	0.0%	36	0.3%	0	0.0%	0	0.0%	3	1.8%	39	0.3%
Solar	0	0.0%	21	0.2%	0	0.0%	0	0.0%	0	0.0%	21	0.2%
None	3	0.4%	30	0.3%	3	8.3%	0	0.0%	0	0.0%	36	0.3%
Total	681	100.0%	10 317	100.0%	36	100.0%	15	100.0%	165	100.0%	11 214	100.0%

Bishop Lavis Energy used for Cooking	Black African		Coloured		Asian		White		Other		Total	
	Num	%	Num	%	Num	%	Num	%	Num	%	Num	%
Electricity	648	94.7%	9 999	96.9%	30	83.3%	12	80.0%	159	96.4%	10 848	96.7%
Gas	27	3.9%	234	2.3%	3	8.3%	3	20.0%	6	3.6%	273	2.4%
Paraffin	0	0.0%	9	0.1%	0	0.0%	0	0.0%	0	0.0%	9	0.1%
Wood	0	0.0%	12	0.1%	0	0.0%	0	0.0%	0	0.0%	12	0.1%
Coal	0	0.0%	0	0.0%	0	0.0%	0	0.0%	0	0.0%	0	0.0%
Animal dung	0	0.0%	3	0.0%	0	0.0%	0	0.0%	0	0.0%	3	0.0%
Solar	6	0.9%	18	0.2%	0	0.0%	0	0.0%	0	0.0%	24	0.2%
Other	0	0.0%	6	0.1%	0	0.0%	0	0.0%	0	0.0%	6	0.1%
None	3	0.4%	36	0.3%	3	8.3%	0	0.0%	0	0.0%	42	0.4%
Total	684	100.0%	10 317	100.0%	36	100.0%	15	100.0%	165	100.0%	11 217	100.0%

Bishop Lavis Energy used for Heating	Black African		Coloured		Asian		White		Other		Total	
	Num	%	Num	%	Num	%	Num	%	Num	%	Num	%
Electricity	549	80.6%	9 267	89.9%	30	90.9%	12	80.0%	153	94.4%	10 011	89.4%
Gas	33	4.8%	84	0.8%	0	0.0%	3	20.0%	3	1.9%	123	1.1%
Paraffin	48	7.0%	21	0.2%	0	0.0%	0	0.0%	0	0.0%	69	0.6%
Wood	3	0.4%	24	0.2%	0	0.0%	0	0.0%	0	0.0%	27	0.2%
Coal	0	0.0%	3	0.0%	0	0.0%	0	0.0%	0	0.0%	3	0.0%
Animal dung	0	0.0%	3	0.0%	0	0.0%	0	0.0%	0	0.0%	3	0.0%
Solar	3	0.4%	24	0.2%	0	0.0%	0	0.0%	0	0.0%	27	0.2%
Other	0	0.0%	0	0.0%	0	0.0%	0	0.0%	0	0.0%	0	0.0%
None	45	6.6%	882	8.6%	3	9.1%	0	0.0%	6	3.7%	936	8.4%
Total	681	100.0%	10 308	100.0%	33	100.0%	15	100.0%	162	100.0%	11 199	100.0%

[Go to top of document](#)