

City of Cape Town – 2011 Census Suburb Cape Town CBD

July 2013

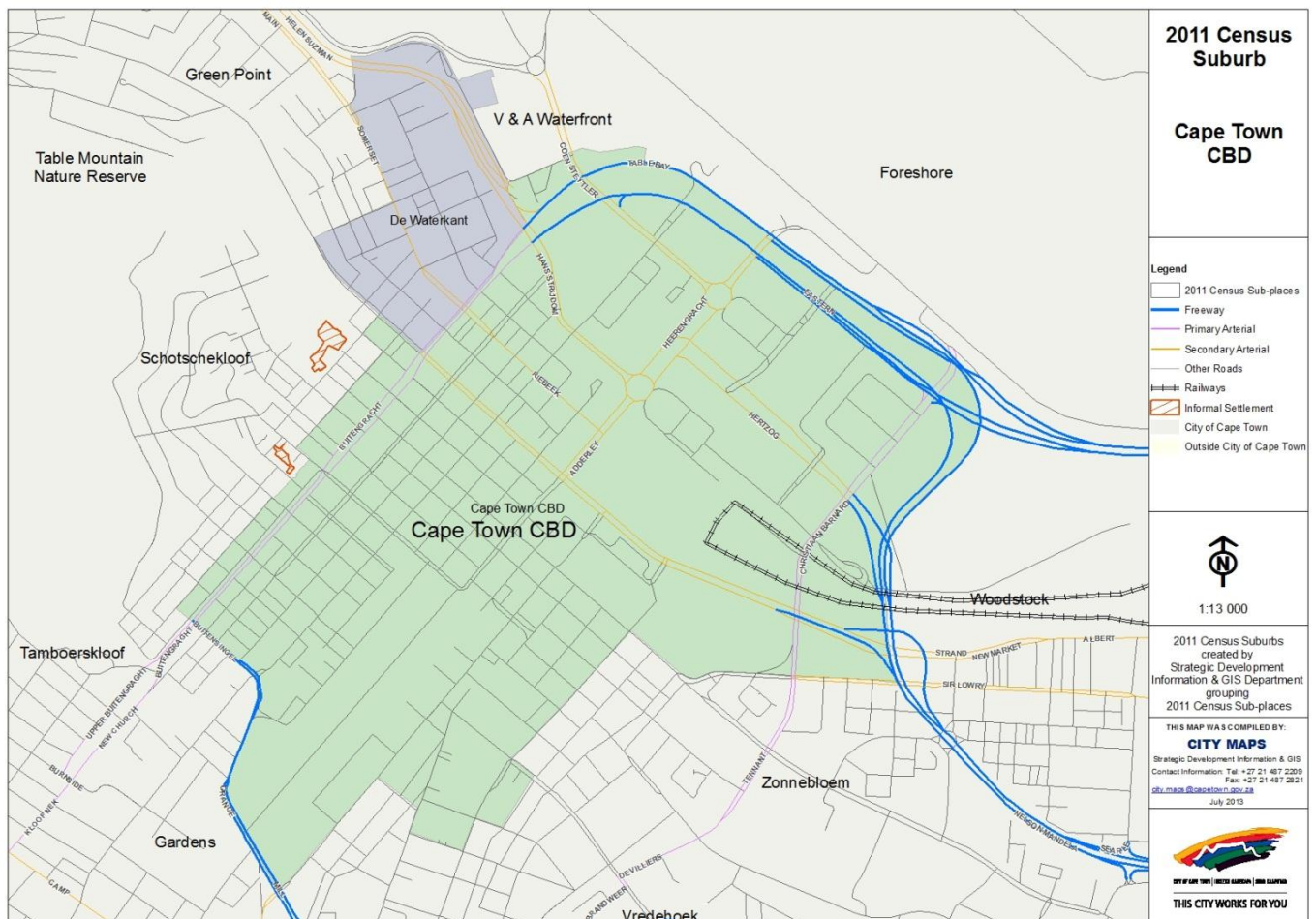
Compiled by Strategic Development Information and GIS Department (SDI&GIS), City of Cape Town
2011 Census data supplied by Statistics South Africa
(Based on information available at the time of compilation as released by Statistics South Africa)

The 2011 Census suburbs (190) have been created by SDI&GIS grouping the 2011 Census sub-places using GIS and December 2011 aerial photography. A sub-place is defined by Statistics South Africa “is the second (lowest) level of the place name category, namely a suburb, section or zone of an (apartheid) township, smallholdings, village, sub-village, ward or informal settlement.”

[Suburb Overview](#), [Demographic Profile](#), [Economic Profile](#), [Dwelling Profile](#), [Household Services Profile](#)

2011 Census Suburb Description

2011 Census suburb Cape Town CBD includes the following sub-places: Cape Town CBD, De Waterkant.



Data Notes:

- The following databases from Statistics South Africa (SSA) software were used to extract the data for the profiles:
Demographic Profile – Descriptive and Education databases
Economic Profile – Labour Force and Head of Household databases
Dwelling Profile – Dwellings database
Household Services Profile – Household Services database
- In some Census suburbs there may be no data for households, or a very low number, as the Census suburb has population mainly living in collective living quarters (e.g. hotels, hostels, students' residences, hospitals, prisons and other institutions) or is an industrial or commercial area. In these instances the number of households is not applicable. All tables have the data included, even if at times they are "0", for completeness. The tables relating to population, age and labour force indicators would include the population living in these collective living quarters.
- The Census suburbs where the population is categorised as living mainly in collective living quarters or is an industrial or commercial area, the average household size has been excluded as it is not applicable. There are some Census suburbs with an average household size that have a small percentage of the population living in collective living quarters within that Census suburb, and this could artificially inflate the average household size.

2011 Census Suburb Overview

2011 Census Suburb Cape Town CBD	2011
Population	5 647
Households	1 686
Average Household Size	3.35

In 2011 the population of 2011 Census suburb Cape Town CBD was 5 647 and the number of households was 1 686. The average household size was 3.35.

A household is defined as a group of persons who live together, and provide themselves jointly with food or other essentials for living, or a single person who lives alone (Statistics South Africa).

The population and household numbers above are to be used and quoted as the official numbers for this 2011 Census suburb for 2011.

Key results for 2011 Census Suburb Cape Town CBD:

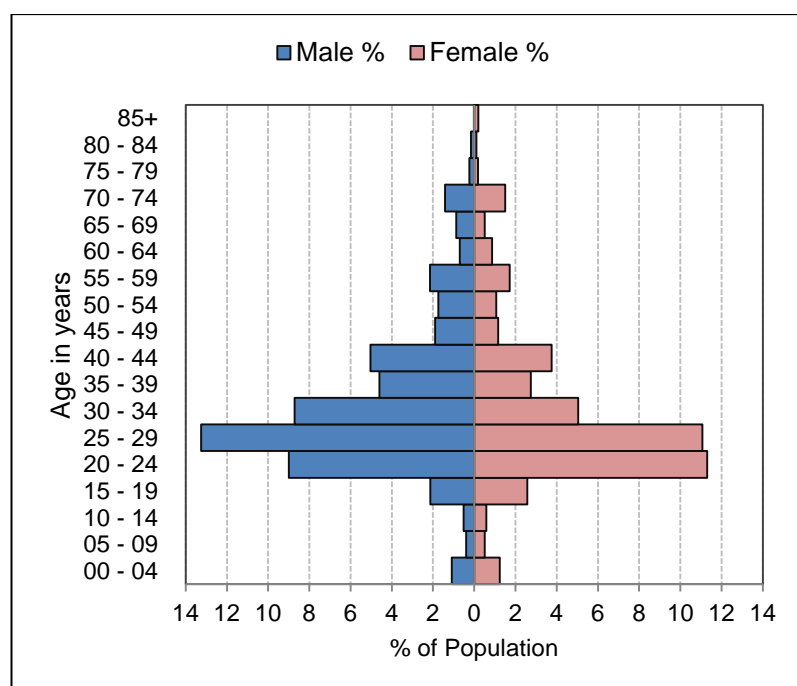
- The population is predominantly Black African (47%) and White (31%).
- 89% of those aged 20 years and older have completed Grade 12 or higher.
- 95% of the labour force (aged 15 to 64) is employed.
- 18% of households have a monthly income of R3 200 or less.
- 99% of households live in formal dwellings.
- 99.5% of households have access to piped water in their dwelling or inside their yard.
- 99.5% of households have access to a flush toilet connected to the public sewer system.
- 97% of households have their refuse removed at least once a week.
- 99.6% of households use electricity for lighting in their dwelling.

Note: There are small variations in the total population and the number of households in the tables which follow. These occur as Statistics South Africa had to calculate the true population to correct omissions and double counts in the enumeration process. In addition when the data is extracted using the Statistics South Africa software, it randomly rounds off all cells to a base number 3, including the totals. These variations are not significant.

[Go to top of document](#)

Demographic Profile – 2011 Census

Cape Town CBD Population	Male		Female		Total	
	Num	%	Num	%	Num	%
Black African	1 443	25.6%	1 216	21.5%	2 659	47.1%
Coloured	341	6.0%	345	6.1%	686	12.1%
Asian	121	2.1%	110	1.9%	231	4.1%
White	945	16.7%	808	14.3%	1 753	31.0%
Other	192	3.4%	126	2.2%	318	5.6%
Total	3 042	53.9%	2 605	46.1%	5 647	100.0%



Cape Town CBD Age	Black African		Coloured		Asian		White		Other		Total	
	Num	%	Num	%	Num	%	Num	%	Num	%	Num	%
0 to 4 years	76	2.9%	23	3.3%	5	2.2%	12	0.7%	17	5.3%	133	2.4%
5 to 14 years	52	2.0%	24	3.5%	8	3.5%	16	0.9%	14	4.4%	114	2.0%
15 to 24 years	801	30.1%	138	20.1%	36	15.7%	386	22.0%	50	15.6%	1 411	25.0%
25 to 64 years	1 608	60.5%	471	68.5%	170	73.9%	1 229	70.0%	223	69.5%	3 701	65.5%
65 years and older	121	4.6%	32	4.7%	11	4.8%	113	6.4%	17	5.3%	294	5.2%
Total	2 658	100.0%	688	100.0%	230	100.0%	1 756	100.0%	321	100.0%	5 653	100.0%

Cape Town CBD Adult Education (for all aged 20+)	Black African		Coloured		Asian		White		Other		Total	
	Num	%	Num	%	Num	%	Num	%	Num	%	Num	%
No schooling	9	1.3%	0	0.0%	0	0.0%	3	0.2%	6	2.9%	18	0.7%
Some primary	15	2.1%	9	3.0%	0	0.0%	3	0.2%	3	1.4%	30	1.1%
Completed primary	6	0.8%	9	3.0%	0	0.0%	0	0.0%	3	1.4%	18	0.7%
Some secondary	66	9.2%	39	13.0%	6	4.9%	54	4.0%	24	11.4%	189	7.0%
Grade 12	204	28.5%	87	29.0%	24	19.5%	240	17.9%	54	25.7%	609	22.7%
Higher	405	56.5%	153	51.0%	93	75.6%	1 011	75.6%	117	55.7%	1 779	66.2%
Other	12	1.7%	3	1.0%	0	0.0%	27	2.0%	3	1.4%	45	1.7%
Total	717	100.0%	300	100.0%	123	100.0%	1 338	100.0%	210	100.0%	2 688	100.0%

[Go to top of document](#)

Economic Profile – 2011 Census

Cape Town CBD Labour Force Indicators	Black African	Coloured	Asian	White	Other	Total
Population aged 15 to 64 years	2 409	609	207	1 611	276	5 112
Labour Force	591	243	102	1 074	138	2 148
Employed	534	234	99	1 035	132	2 034
Unemployed	57	9	3	39	6	114
Not Economically Active	1 818	366	105	537	138	2 964
Discouraged Work-seekers	0	6	0	0	6	12
Other not economically active	1 818	360	105	537	132	2 952
Rates %						
Unemployment rate	9.64%	3.70%	2.94%	3.63%	4.35%	5.31%
Labour absorption rate	22.17%	38.42%	47.83%	64.25%	47.83%	39.79%
Labour Force participation rate	24.53%	39.90%	49.28%	66.67%	50.00%	42.02%

Definitions:

Unemployment rate is the proportion of the labour force that is unemployed.

The **labour absorption rate** is the proportion of working age (15 to 64 years) population that is employed.

The **labour force participation rate** is the proportion of the working age population that is either employed or unemployed.

Note: Based on available data as supplied by Statistics South Africa, the people categorised as living in collective living quarters are included in the "Other not economically active" category.

Cape Town CBD Monthly Household Income	Black African		Coloured		Asian		White		Other		Total	
	Num	%	Num	%	Num	%	Num	%	Num	%	Num	%
No income	63	15.1%	6	3.8%	3	4.0%	105	11.3%	12	11.1%	189	11.2%
R 1 - R 1 600	24	5.8%	9	5.7%	6	8.0%	21	2.3%	3	2.8%	63	3.7%
R 1 601 - R 3 200	21	5.0%	9	5.7%	3	4.0%	12	1.3%	9	8.3%	54	3.2%
R 3 201 - R 6 400	66	15.8%	9	5.7%	3	4.0%	51	5.5%	15	13.9%	144	8.5%
R 6 401 - R 12 800	90	21.6%	45	28.3%	9	12.0%	132	14.2%	18	16.7%	294	17.4%
R 12 801 - R 25 600	69	16.5%	21	13.2%	12	16.0%	213	23.0%	27	25.0%	342	20.3%
R 25 601 - R 51 200	54	12.9%	39	24.5%	24	32.0%	255	27.5%	15	13.9%	387	23.0%
R 51 201 - R 102 400	21	5.0%	15	9.4%	12	16.0%	102	11.0%	3	2.8%	153	9.1%
R 102 401 or more	9	2.2%	6	3.8%	3	4.0%	36	3.9%	6	5.6%	60	3.6%
Unspecified	0	0.0%	0	0.0%	0	0.0%	0	0.0%	0	0.0%	0	0.0%
Total	417	100.0%	159	100.0%	75	100.0%	927	100.0%	108	100.0%	1 686	100.0%

[Go to top of document](#)

Dwelling Profile – 2011 Census

Cape Town CBD Type of Dwelling	Black African		Coloured		Asian		White		Other		Total	
	Num	%	Num	%	Num	%	Num	%	Num	%	Num	%
Formal Dwelling	413	97.6%	154	98.7%	75	100.0%	920	99.7%	110	100.0%	1 672	99.1%
Informal dwelling / shack in backyard	0	0.0%	0	0.0%	0	0.0%	0	0.0%	0	0.0%	0	0.0%
Informal dwelling / shack NOT in backyard	3	0.7%	0	0.0%	0	0.0%	0	0.0%	0	0.0%	3	0.2%
Other	7	1.7%	2	1.3%	0	0.0%	3	0.3%	0	0.0%	12	0.7%
Total	423	100.0%	156	100.0%	75	100.0%	923	100.0%	110	100.0%	1 687	100.0%

Cape Town CBD Tenure Status	Black African		Coloured		Asian		White		Other		Total	
	Num	%	Num	%	Num	%	Num	%	Num	%	Num	%
Owned and fully paid off	15	3.6%	21	13.4%	4	5.4%	137	14.8%	10	9.3%	187	11.1%
Owned but not yet paid off	18	4.3%	18	11.5%	19	25.7%	116	12.6%	9	8.3%	180	10.7%
Rented	379	89.8%	116	73.9%	48	64.9%	656	71.0%	87	80.6%	1 286	76.3%
Occupied rent-free	7	1.7%	2	1.3%	2	2.7%	10	1.1%	1	0.9%	22	1.3%
Other	3	0.7%	0	0.0%	1	1.4%	5	0.5%	1	0.9%	10	0.6%
Total	422	100.0%	157	100.0%	74	100.0%	924	100.0%	108	100.0%	1 685	100.0%

[Go to top of document](#)

Household Services Profile – 2011 Census

Cape Town CBD Access to Piped Water	Black African		Coloured		Asian		White		Other		Total	
	Num	%	Num	%	Num	%	Num	%	Num	%	Num	%
Piped water inside dwelling	417	97.9%	159	100.0%	72	100.0%	918	99.4%	108	100.0%	1 674	99.1%
Piped water inside yard	3	0.7%	0	0.0%	0	0.0%	3	0.3%	0	0.0%	6	0.4%
Piped water outside yard: < 200m	3	0.7%	0	0.0%	0	0.0%	0	0.0%	0	0.0%	3	0.2%
Piped water outside yard: > 200m	3	0.7%	0	0.0%	0	0.0%	0	0.0%	0	0.0%	3	0.2%
No access to piped water	0	0.0%	0	0.0%	0	0.0%	3	0.3%	0	0.0%	3	0.2%
Total	426	100.0%	159	100.0%	72	100.0%	924	100.0%	108	100.0%	1 689	100.0%

Cape Town CBD Toilet Facility	Black African		Coloured		Asian		White		Other		Total	
	Num	%	Num	%	Num	%	Num	%	Num	%	Num	%
Flush toilet (connected to sewerage system)	417	99.3%	156	100.0%	75	100.0%	918	99.4%	108	100.0%	1 674	99.5%
Flush toilet (with septic tank)	3	0.7%	0	0.0%	0	0.0%	3	0.3%	0	0.0%	6	0.4%
Chemical toilet	0	0.0%	0	0.0%	0	0.0%	0	0.0%	0	0.0%	0	0.0%
Pit toilet with ventilation (VIP)	0	0.0%	0	0.0%	0	0.0%	0	0.0%	0	0.0%	0	0.0%
Pit toilet without ventilation	0	0.0%	0	0.0%	0	0.0%	0	0.0%	0	0.0%	0	0.0%
Bucket toilet	0	0.0%	0	0.0%	0	0.0%	0	0.0%	0	0.0%	0	0.0%
Other	0	0.0%	0	0.0%	0	0.0%	3	0.3%	0	0.0%	3	0.2%
None	0	0.0%	0	0.0%	0	0.0%	0	0.0%	0	0.0%	0	0.0%
Total	420	100.0%	156	100.0%	75	100.0%	924	100.0%	108	100.0%	1 683	100.0%

Cape Town CBD Refuse Disposal	Black African		Coloured		Asian		White		Other		Total	
	Num	%	Num	%	Num	%	Num	%	Num	%	Num	%
Removed by local authority/private company at least once a week	411	97.2%	153	98.1%	75	96.2%	900	97.4%	105	94.6%	1 644	97.2%
Removed by local authority/private company less often	0	0.0%	0	0.0%	0	0.0%	9	1.0%	3	2.7%	12	0.7%
Communal refuse dump	6	1.4%	3	1.9%	3	3.8%	12	1.3%	3	2.7%	27	1.6%
Own refuse dump	0	0.0%	0	0.0%	0	0.0%	0	0.0%	0	0.0%	0	0.0%
No rubbish disposal	0	0.0%	0	0.0%	0	0.0%	0	0.0%	0	0.0%	0	0.0%
Other	6	1.4%	0	0.0%	0	0.0%	3	0.3%	0	0.0%	9	0.5%
Total	423	100.0%	156	100.0%	78	100.0%	924	100.0%	111	100.0%	1 692	100.0%

[Go to top of document](#)

Household Services Profile continued – 2011 Census

Cape Town CBD Energy used for Lighting	Black African		Coloured		Asian		White		Other		Total	
	Num	%	Num	%	Num	%	Num	%	Num	%	Num	%
Electricity	417	99.3%	156	100.0%	75	100.0%	921	99.7%	111	100.0%	1 680	99.6%
Gas	0	0.0%	0	0.0%	0	0.0%	3	0.3%	0	0.0%	3	0.2%
Paraffin	3	0.7%	0	0.0%	0	0.0%	0	0.0%	0	0.0%	3	0.2%
Candles	0	0.0%	0	0.0%	0	0.0%	0	0.0%	0	0.0%	0	0.0%
Solar	0	0.0%	0	0.0%	0	0.0%	0	0.0%	0	0.0%	0	0.0%
None	0	0.0%	0	0.0%	0	0.0%	0	0.0%	0	0.0%	0	0.0%
Total	420	100.0%	156	100.0%	75	100.0%	924	100.0%	111	100.0%	1 686	100.0%

Cape Town CBD Energy used for Cooking	Black African		Coloured		Asian		White		Other		Total	
	Num	%	Num	%	Num	%	Num	%	Num	%	Num	%
Electricity	411	96.5%	153	98.1%	72	96.0%	882	96.1%	102	94.4%	1 620	96.3%
Gas	6	1.4%	3	1.9%	3	4.0%	30	3.3%	6	5.6%	48	2.9%
Paraffin	3	0.7%	0	0.0%	0	0.0%	0	0.0%	0	0.0%	3	0.2%
Wood	0	0.0%	0	0.0%	0	0.0%	0	0.0%	0	0.0%	0	0.0%
Coal	0	0.0%	0	0.0%	0	0.0%	0	0.0%	0	0.0%	0	0.0%
Animal dung	0	0.0%	0	0.0%	0	0.0%	0	0.0%	0	0.0%	0	0.0%
Solar	0	0.0%	0	0.0%	0	0.0%	0	0.0%	0	0.0%	0	0.0%
Other	6	1.4%	0	0.0%	0	0.0%	6	0.7%	0	0.0%	12	0.7%
None	0	0.0%	0	0.0%	0	0.0%	0	0.0%	0	0.0%	0	0.0%
Total	426	100.0%	156	100.0%	75	100.0%	918	100.0%	108	100.0%	1 683	100.0%

Cape Town CBD Energy used for Heating	Black African		Coloured		Asian		White		Other		Total	
	Num	%	Num	%	Num	%	Num	%	Num	%	Num	%
Electricity	393	93.6%	150	94.3%	69	95.8%	852	92.8%	90	85.7%	1 554	92.8%
Gas	6	1.4%	3	1.9%	0	0.0%	21	2.3%	0	0.0%	30	1.8%
Paraffin	3	0.7%	0	0.0%	0	0.0%	0	0.0%	0	0.0%	3	0.2%
Wood	3	0.7%	0	0.0%	0	0.0%	0	0.0%	0	0.0%	3	0.2%
Coal	0	0.0%	0	0.0%	0	0.0%	0	0.0%	0	0.0%	0	0.0%
Animal dung	0	0.0%	0	0.0%	0	0.0%	0	0.0%	0	0.0%	0	0.0%
Solar	0	0.0%	0	0.0%	0	0.0%	0	0.0%	0	0.0%	0	0.0%
Other	0	0.0%	0	0.0%	0	0.0%	0	0.0%	0	0.0%	0	0.0%
None	15	3.6%	6	3.8%	3	4.2%	45	4.9%	15	14.3%	84	5.0%
Total	420	100.0%	159	100.0%	72	100.0%	918	100.0%	105	100.0%	1 674	100.0%

[Go to top of document](#)