

City of Cape Town – 2011 Census Suburb Castle Rock

July 2013

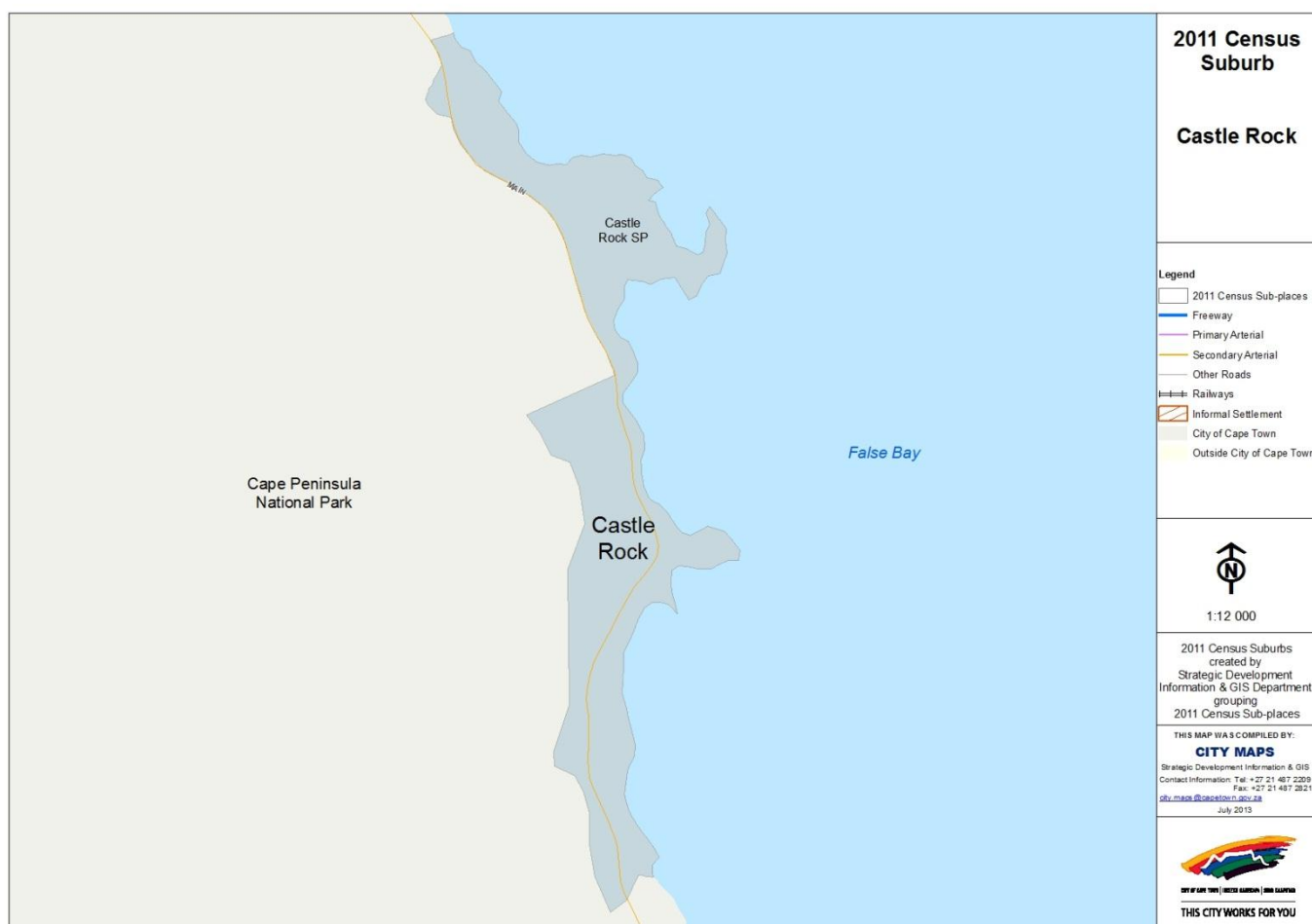
Compiled by Strategic Development Information and GIS Department (SDI&GIS), City of Cape Town
2011 Census data supplied by Statistics South Africa
(Based on information available at the time of compilation as released by Statistics South Africa)

The 2011 Census suburbs (190) have been created by SDI&GIS grouping the 2011 Census sub-places using GIS and December 2011 aerial photography. A sub-place is defined by Statistics South Africa “is the second (lowest) level of the place name category, namely a suburb, section or zone of an (apartheid) township, smallholdings, village, sub-village, ward or informal settlement.”

[Suburb Overview](#), [Demographic Profile](#), [Economic Profile](#), [Dwelling Profile](#), [Household Services Profile](#)

2011 Census Suburb Description

2011 Census suburb Castle Rock includes the following sub-places: Castle Rock SP.



Data Notes:

- The following databases from Statistics South Africa (SSA) software were used to extract the data for the profiles:
Demographic Profile – Descriptive and Education databases
Economic Profile – Labour Force and Head of Household databases
Dwelling Profile – Dwellings database
Household Services Profile – Household Services database
- In some Census suburbs there may be no data for households, or a very low number, as the Census suburb has population mainly living in collective living quarters (e.g. hotels, hostels, students' residences, hospitals, prisons and other institutions) or is an industrial or commercial area. In these instances the number of households is not applicable. All tables have the data included, even if at times they are "0", for completeness. The tables relating to population, age and labour force indicators would include the population living in these collective living quarters.
- The Census suburbs where the population is categorised as living mainly in collective living quarters or is an industrial or commercial area, the average household size has been excluded as it is not applicable. There are some Census suburbs with an average household size that have a small percentage of the population living in collective living quarters within that Census suburb, and this could artificially inflate the average household size.

2011 Census Suburb Overview

2011 Census Suburb Castle Rock	2011
Population	5 595
Households	33

In 2011 the population of 2011 Census suburb Castle Rock was 5 595 and the number of households was 33.

A household is defined as a group of persons who live together, and provide themselves jointly with food or other essentials for living, or a single person who lives alone (Statistics South Africa).

The population and household numbers above are to be used and quoted as the official numbers for this 2011 Census suburb for 2011.

Key results for 2011 Census Suburb Castle Rock:

- The population is predominantly Black African (50%) and Coloured (46%).
- 18% of households have a monthly income of R3 200 or less.
- 94% of households live in formal dwellings.
- 100% of households have access to piped water in their dwelling or inside their yard.
- 90% of households have access to a flush toilet connected to the public sewer system.
- 82% of households have their refuse removed at least once a week.
- 100% of households use electricity for lighting in their dwelling.

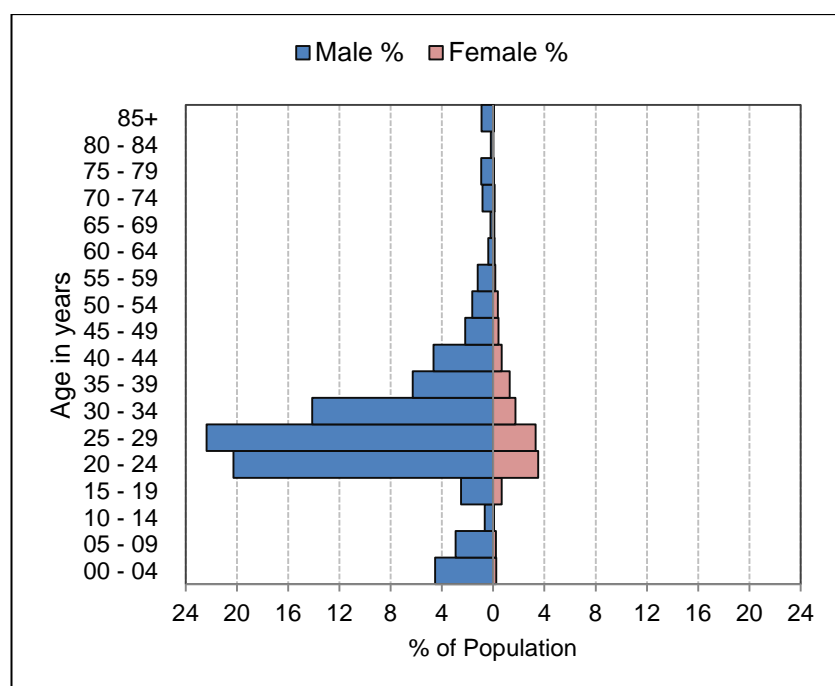
As the population of this suburb lives mainly in collective living quarters, information relating to the other socio-economic indicators is not applicable.

Note: There are small variations in the total population and the number of households in the tables which follow. These occur as Statistics South Africa had to calculate the true population to correct omissions and double counts in the enumeration process. In addition when the data is extracted using the Statistics South Africa software, it randomly rounds off all cells to a base number 3, including the totals. These variations are not significant.

[Go to top of document](#)

Demographic Profile – 2011 Census

Castle Rock Population	Male		Female		Total	
	Num	%	Num	%	Num	%
Black African	2 484	44.4%	287	5.1%	2 771	49.5%
Coloured	2 192	39.2%	399	7.1%	2 591	46.3%
Asian	34	0.6%	8	0.1%	42	0.8%
White	124	2.2%	35	0.6%	159	2.8%
Other	24	0.4%	8	0.1%	32	0.6%
Total	4 858	86.8%	737	13.2%	5 595	100.0%



Castle Rock Age	Black African		Coloured		Asian		White		Other		Total	
	Num	%	Num	%	Num	%	Num	%	Num	%	Num	%
0 to 4 years	157	5.7%	92	3.5%	4	9.5%	10	6.4%	4	11.8%	267	4.8%
5 to 14 years	134	4.8%	65	2.5%	3	7.1%	13	8.3%	1	2.9%	216	3.9%
15 to 24 years	745	26.9%	698	26.9%	18	42.9%	35	22.3%	14	41.2%	1 510	27.0%
25 to 64 years	1 621	58.5%	1 680	64.8%	15	35.7%	81	51.6%	13	38.2%	3 410	60.9%
65 years and older	114	4.1%	57	2.2%	2	4.8%	18	11.5%	2	5.9%	193	3.4%
Total	2 771	100.0%	2 592	100.0%	42	100.0%	157	100.0%	34	100.0%	5 596	100.0%

Castle Rock Adult Education (for all aged 20+)	Black African		Coloured		Asian		White		Other		Total	
	Num	%	Num	%	Num	%	Num	%	Num	%	Num	%
No schooling	0	0.0%	0	0.0%	0	0.0%	0	0.0%	0	0.0%	0	0.0%
Some primary	0	0.0%	6	8.0%	0	0.0%	0	0.0%	0	0.0%	6	6.5%
Completed primary	0	0.0%	6	8.0%	0	0.0%	0	0.0%	0	0.0%	6	6.5%
Some secondary	0	0.0%	33	44.0%	0	0.0%	0	0.0%	3	100.0%	36	38.7%
Grade 12	0	0.0%	24	32.0%	0	0.0%	9	60.0%	0	0.0%	33	35.5%
Higher	0	0.0%	6	8.0%	0	0.0%	6	40.0%	0	0.0%	12	12.9%
Other	0	0.0%	0	0.0%	0	0.0%	0	0.0%	0	0.0%	0	0.0%
Total	0	0.0%	75	100.0%	0	0.0%	15	100.0%	3	100.0%	93	100.0%

[Go to top of document](#)

Economic Profile – 2011 Census

Castle Rock Labour Force Indicators	Black African	Coloured	Asian	White	Other	Total
Population aged 15 to 64 years	2 367	2 379	33	117	27	4 923
Labour Force	0	42	0	9	3	54
Employed	0	36	0	9	3	48
Unemployed	0	6	0	0	0	6
Not Economically Active	2 367	2 337	33	108	24	4 869
Discouraged Work-seekers	0	0	0	0	0	0
Other not economically active	2 367	2 337	33	108	24	4 869
Rates %						
Unemployment rate	0.00%	14.29%	0.00%	0.00%	0.00%	11.11%
Labour absorption rate	0.00%	1.51%	0.00%	7.69%	11.11%	0.98%
Labour Force participation rate	0.00%	1.77%	0.00%	7.69%	11.11%	1.10%

Definitions:

Unemployment rate is the proportion of the labour force that is unemployed.

The **labour absorption rate** is the proportion of working age (15 to 64 years) population that is employed.

The **labour force participation rate** is the proportion of the working age population that is either employed or unemployed.

Note: Based on available data as supplied by Statistics South Africa, the people categorised as living in collective living quarters are included in the "Other not economically active" category.

Castle Rock Monthly Household Income	Black African		Coloured		Asian		White		Other		Total	
	Num	%	Num	%	Num	%	Num	%	Num	%	Num	%
No income	0	0.0%	3	12.5%	0	0.0%	0	0.0%	0	0.0%	3	9.1%
R 1 - R 1 600	0	0.0%	0	0.0%	0	0.0%	0	0.0%	0	0.0%	0	0.0%
R 1 601 - R 3 200	0	0.0%	3	12.5%	0	0.0%	0	0.0%	0	0.0%	3	9.1%
R 3 201 - R 6 400	0	0.0%	0	0.0%	0	0.0%	0	0.0%	0	0.0%	0	0.0%
R 6 401 - R 12 800	0	0.0%	6	25.0%	0	0.0%	3	33.3%	0	0.0%	9	27.3%
R 12 801 - R 25 600	0	0.0%	9	37.5%	0	0.0%	3	33.3%	0	0.0%	12	36.4%
R 25 601 - R 51 200	0	0.0%	3	12.5%	0	0.0%	3	33.3%	0	0.0%	6	18.2%
R 51 201 - R 102 400	0	0.0%	0	0.0%	0	0.0%	0	0.0%	0	0.0%	0	0.0%
R 102 401 or more	0	0.0%	0	0.0%	0	0.0%	0	0.0%	0	0.0%	0	0.0%
Unspecified	0	0.0%	0	0.0%	0	0.0%	0	0.0%	0	0.0%	0	0.0%
Total	0	0.0%	24	100.0%	0	0.0%	9	100.0%	0	0.0%	33	100.0%

[Go to top of document](#)

Dwelling Profile – 2011 Census

Castle Rock Type of Dwelling	Black African		Coloured		Asian		White		Other		Total	
	Num	%	Num	%	Num	%	Num	%	Num	%	Num	%
Formal Dwelling	0	0.0%	22	100.0%	0	0.0%	8	80.0%	1	100.0%	31	93.9%
Informal dwelling / shack in backyard	0	0.0%	0	0.0%	0	0.0%	0	0.0%	0	0.0%	0	0.0%
Informal dwelling / shack NOT in backyard	0	0.0%	0	0.0%	0	0.0%	0	0.0%	0	0.0%	0	0.0%
Other	0	0.0%	0	0.0%	0	0.0%	2	20.0%	0	0.0%	2	6.1%
Total	0	0.0%	22	100.0%	0	0.0%	10	100.0%	1	100.0%	33	100.0%

Castle Rock Tenure Status	Black African		Coloured		Asian		White		Other		Total	
	Num	%	Num	%	Num	%	Num	%	Num	%	Num	%
Owned and fully paid off	0	0.0%	14	63.6%	0	0.0%	6	60.0%	1	100.0%	21	63.6%
Owned but not yet paid off	0	0.0%	7	31.8%	0	0.0%	0	0.0%	0	0.0%	7	21.2%
Rented	0	0.0%	1	4.5%	0	0.0%	4	40.0%	0	0.0%	5	15.2%
Occupied rent-free	0	0.0%	0	0.0%	0	0.0%	0	0.0%	0	0.0%	0	0.0%
Other	0	0.0%	0	0.0%	0	0.0%	0	0.0%	0	0.0%	0	0.0%
Total	0	0.0%	22	100.0%	0	0.0%	10	100.0%	1	100.0%	33	100.0%

[Go to top of document](#)

Household Services Profile – 2011 Census

Castle Rock Access to Piped Water	Black African		Coloured		Asian		White		Other		Total	
	Num	%	Num	%	Num	%	Num	%	Num	%	Num	%
Piped water inside dwelling	0	0.0%	21	100.0%	0	0.0%	9	100.0%	3	100.0%	33	100.0%
Piped water inside yard	0	0.0%	0	0.0%	0	0.0%	0	0.0%	0	0.0%	0	0.0%
Piped water outside yard: < 200m	0	0.0%	0	0.0%	0	0.0%	0	0.0%	0	0.0%	0	0.0%
Piped water outside yard: > 200m	0	0.0%	0	0.0%	0	0.0%	0	0.0%	0	0.0%	0	0.0%
No access to piped water	0	0.0%	0	0.0%	0	0.0%	0	0.0%	0	0.0%	0	0.0%
Total	0	0.0%	21	100.0%	0	0.0%	9	100.0%	3	100.0%	33	100.0%

Castle Rock Toilet Facility	Black African		Coloured		Asian		White		Other		Total	
	Num	%	Num	%	Num	%	Num	%	Num	%	Num	%
Flush toilet (connected to sewerage system)	0	0.0%	21	100.0%	0	0.0%	6	66.7%	0	0.0%	27	90.0%
Flush toilet (with septic tank)	0	0.0%	0	0.0%	0	0.0%	3	33.3%	0	0.0%	3	10.0%
Chemical toilet	0	0.0%	0	0.0%	0	0.0%	0	0.0%	0	0.0%	0	0.0%
Pit toilet with ventilation (VIP)	0	0.0%	0	0.0%	0	0.0%	0	0.0%	0	0.0%	0	0.0%
Pit toilet without ventilation	0	0.0%	0	0.0%	0	0.0%	0	0.0%	0	0.0%	0	0.0%
Bucket toilet	0	0.0%	0	0.0%	0	0.0%	0	0.0%	0	0.0%	0	0.0%
Other	0	0.0%	0	0.0%	0	0.0%	0	0.0%	0	0.0%	0	0.0%
None	0	0.0%	0	0.0%	0	0.0%	0	0.0%	0	0.0%	0	0.0%
Total	0	0.0%	21	100.0%	0	0.0%	9	100.0%	0	0.0%	30	100.0%

Castle Rock Refuse Disposal	Black African		Coloured		Asian		White		Other		Total	
	Num	%	Num	%	Num	%	Num	%	Num	%	Num	%
Removed by local authority/private company at least once a week	0	0.0%	21	100.0%	0	0.0%	6	50.0%	0	0.0%	27	81.8%
Removed by local authority/private company less often	0	0.0%	0	0.0%	0	0.0%	0	0.0%	0	0.0%	0	0.0%
Communal refuse dump	0	0.0%	0	0.0%	0	0.0%	3	25.0%	0	0.0%	3	9.1%
Own refuse dump	0	0.0%	0	0.0%	0	0.0%	3	25.0%	0	0.0%	3	9.1%
No rubbish disposal	0	0.0%	0	0.0%	0	0.0%	0	0.0%	0	0.0%	0	0.0%
Other	0	0.0%	0	0.0%	0	0.0%	0	0.0%	0	0.0%	0	0.0%
Total	0	0.0%	21	100.0%	0	0.0%	12	100.0%	0	0.0%	33	100.0%

[Go to top of document](#)

Household Services Profile continued – 2011 Census

Castle Rock Energy used for Lighting	Black African		Coloured		Asian		White		Other		Total	
	Num	%	Num	%	Num	%	Num	%	Num	%	Num	%
Electricity	0	0.0%	21	100.0%	0	0.0%	9	100.0%	0	0.0%	30	100.0%
Gas	0	0.0%	0	0.0%	0	0.0%	0	0.0%	0	0.0%	0	0.0%
Paraffin	0	0.0%	0	0.0%	0	0.0%	0	0.0%	0	0.0%	0	0.0%
Candles	0	0.0%	0	0.0%	0	0.0%	0	0.0%	0	0.0%	0	0.0%
Solar	0	0.0%	0	0.0%	0	0.0%	0	0.0%	0	0.0%	0	0.0%
None	0	0.0%	0	0.0%	0	0.0%	0	0.0%	0	0.0%	0	0.0%
Total	0	0.0%	21	100.0%	0	0.0%	9	100.0%	0	0.0%	30	100.0%

Castle Rock Energy used for Cooking	Black African		Coloured		Asian		White		Other		Total	
	Num	%	Num	%	Num	%	Num	%	Num	%	Num	%
Electricity	0	0.0%	21	100.0%	0	0.0%	6	50.0%	0	0.0%	27	81.8%
Gas	0	0.0%	0	0.0%	0	0.0%	6	50.0%	0	0.0%	6	18.2%
Paraffin	0	0.0%	0	0.0%	0	0.0%	0	0.0%	0	0.0%	0	0.0%
Wood	0	0.0%	0	0.0%	0	0.0%	0	0.0%	0	0.0%	0	0.0%
Coal	0	0.0%	0	0.0%	0	0.0%	0	0.0%	0	0.0%	0	0.0%
Animal dung	0	0.0%	0	0.0%	0	0.0%	0	0.0%	0	0.0%	0	0.0%
Solar	0	0.0%	0	0.0%	0	0.0%	0	0.0%	0	0.0%	0	0.0%
Other	0	0.0%	0	0.0%	0	0.0%	0	0.0%	0	0.0%	0	0.0%
None	0	0.0%	0	0.0%	0	0.0%	0	0.0%	0	0.0%	0	0.0%
Total	0	0.0%	21	100.0%	0	0.0%	12	100.0%	0	0.0%	33	100.0%

Castle Rock Energy used for Heating	Black African		Coloured		Asian		White		Other		Total	
	Num	%	Num	%	Num	%	Num	%	Num	%	Num	%
Electricity	0	0.0%	21	100.0%	0	0.0%	6	66.7%	0	0.0%	27	90.0%
Gas	0	0.0%	0	0.0%	0	0.0%	3	33.3%	0	0.0%	3	10.0%
Paraffin	0	0.0%	0	0.0%	0	0.0%	0	0.0%	0	0.0%	0	0.0%
Wood	0	0.0%	0	0.0%	0	0.0%	0	0.0%	0	0.0%	0	0.0%
Coal	0	0.0%	0	0.0%	0	0.0%	0	0.0%	0	0.0%	0	0.0%
Animal dung	0	0.0%	0	0.0%	0	0.0%	0	0.0%	0	0.0%	0	0.0%
Solar	0	0.0%	0	0.0%	0	0.0%	0	0.0%	0	0.0%	0	0.0%
Other	0	0.0%	0	0.0%	0	0.0%	0	0.0%	0	0.0%	0	0.0%
None	0	0.0%	0	0.0%	0	0.0%	0	0.0%	0	0.0%	0	0.0%
Total	0	0.0%	21	100.0%	0	0.0%	9	100.0%	0	0.0%	30	100.0%

[Go to top of document](#)