

City of Cape Town – 2011 Census Suburb Gugulethu

July 2013

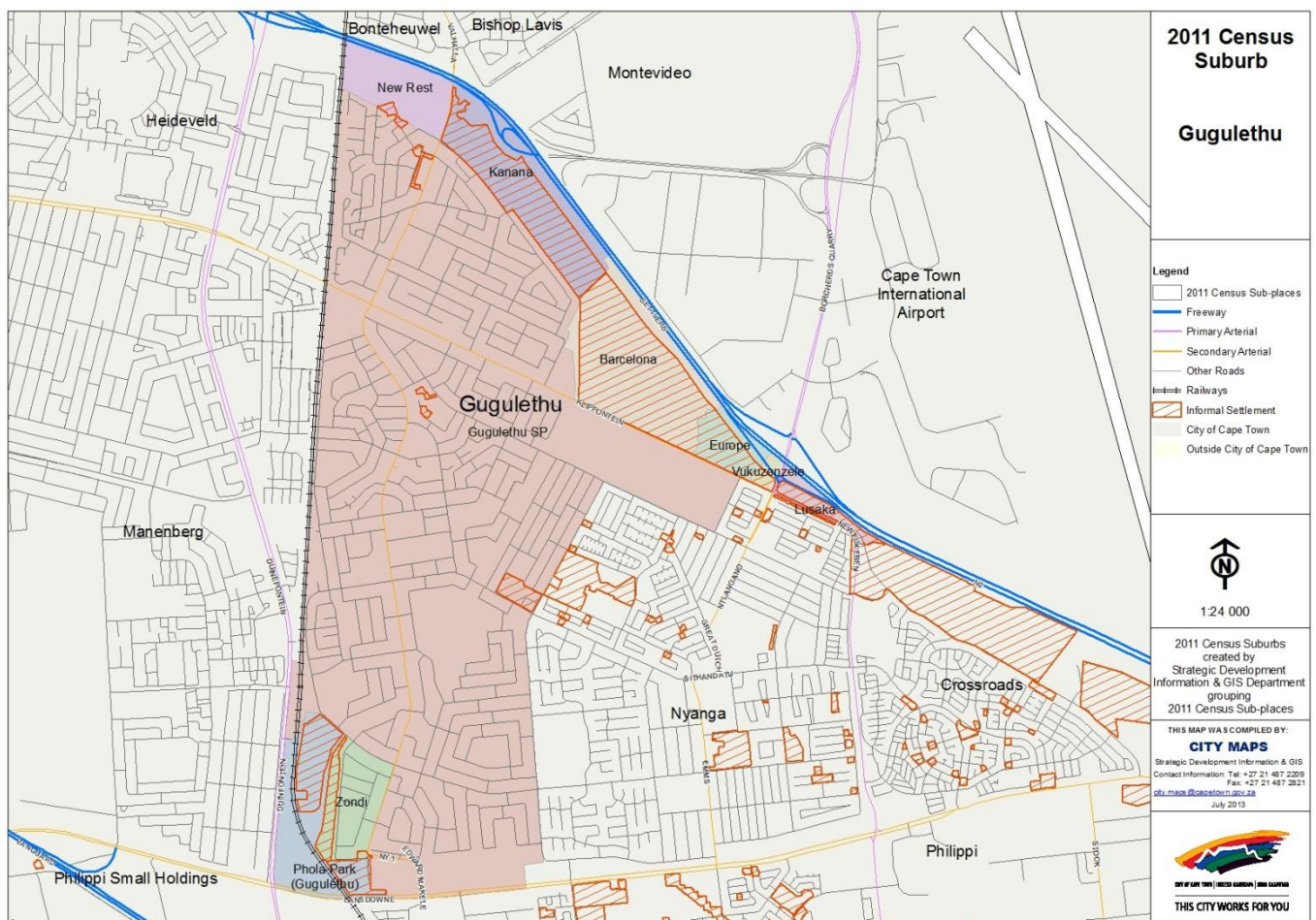
Compiled by Strategic Development Information and GIS Department (SDI&GIS), City of Cape Town
2011 Census data supplied by Statistics South Africa
(Based on information available at the time of compilation as released by Statistics South Africa)

The 2011 Census suburbs (190) have been created by SDI&GIS grouping the 2011 Census sub-places using GIS and December 2011 aerial photography. A sub-place is defined by Statistics South Africa “is the second (lowest) level of the place name category, namely a suburb, section or zone of an (apartheid) township, smallholdings, village, sub-village, ward or informal settlement.”

[Suburb Overview](#), [Demographic Profile](#), [Economic Profile](#), [Dwelling Profile](#), [Household Services Profile](#)

2011 Census Suburb Description

2011 Census suburb Gugulethu includes the following sub-places: Barcelona, Europe, Gugulethu SP, Kanana, Lusaka, New Rest, Phola Park (Gugulethu), Vukuzenzele, Zondi.



Data Notes:

- The following databases from Statistics South Africa (SSA) software were used to extract the data for the profiles:
Demographic Profile – Descriptive and Education databases
Economic Profile – Labour Force and Head of Household databases
Dwelling Profile – Dwellings database
Household Services Profile – Household Services database
- In some Census suburbs there may be no data for households, or a very low number, as the Census suburb has population mainly living in collective living quarters (e.g. hotels, hostels, students’ residences, hospitals, prisons and other institutions) or is an industrial or commercial area. In these instances the number of households is not applicable. All tables have the data included, even if at times they are “0”, for completeness. The tables relating to population, age and labour force indicators would include the population living in these collective living quarters.
- The Census suburbs where the population is categorised as living mainly in collective living quarters or is an industrial or commercial area, the average household size has been excluded as it is not applicable. There are some Census suburbs with an average household size that have a small percentage of the population living in collective living quarters within that Census suburb, and this could artificially inflate the average household size.

2011 Census Suburb Overview

2011 Census Suburb Gugulethu	2011
Population	98 468
Households	29 577
Average Household Size	3.33

In 2011 the population of 2011 Census suburb Gugulethu was 98 468 and the number of households was 29 577. The average household size was 3.33.

A household is defined as a group of persons who live together, and provide themselves jointly with food or other essentials for living, or a single person who lives alone (Statistics South Africa).

The population and household numbers above are to be used and quoted as the official numbers for this 2011 Census suburb for 2011.

Key results for 2011 Census Suburb Gugulethu:

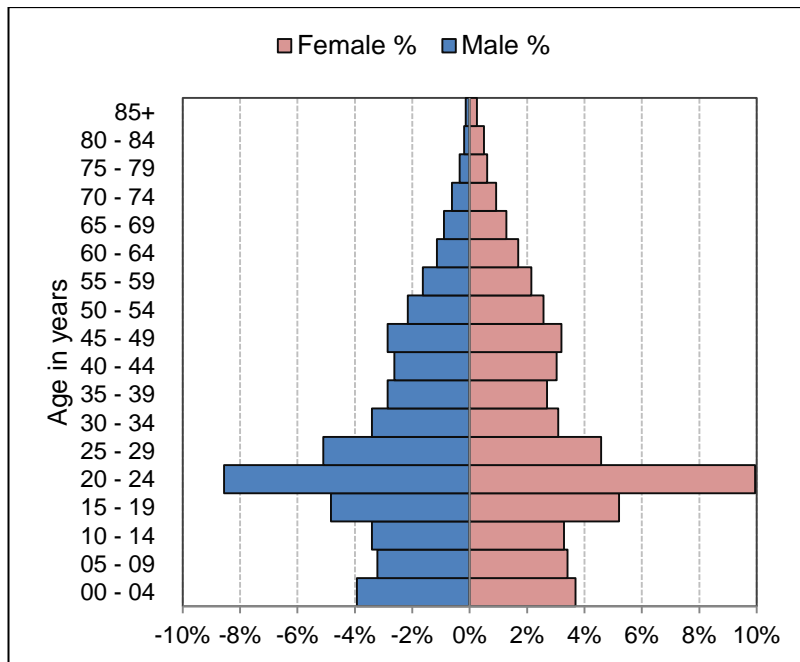
- The population is predominantly Black African (99%).
- 37% of those aged 20 years and older have completed Grade 12 or higher.
- 60% of the labour force (aged 15 to 64) is employed.
- 71% of households have a monthly income of R3 200 or less.
- 52% of households live in formal dwellings.
- 58% of households have access to piped water in their dwelling or inside their yard.
- 63% of households have access to a flush toilet connected to the public sewer system.
- 89% of households have their refuse removed at least once a week.
- 97% of households use electricity for lighting in their dwelling.

Note: There are small variations in the total population and the number of households in the tables which follow. These occur as Statistics South Africa had to calculate the true population to correct omissions and double counts in the enumeration process. In addition when the data is extracted using the Statistics South Africa software, it randomly rounds off all cells to a base number 3, including the totals. These variations are not significant.

[Go to top of document](#)

Demographic Profile – 2011 Census

Gugulethu Population	Male		Female		Total	
	Num	%	Num	%	Num	%
Black African	47 560	48.3%	49 510	50.3%	97 070	98.6%
Coloured	331	0.3%	529	0.5%	860	0.9%
Asian	51	0.1%	29	0.0%	80	0.1%
White	27	0.0%	17	0.0%	44	0.0%
Other	308	0.3%	106	0.1%	414	0.4%
Total	48 277	49.0%	50 191	51.0%	98 468	100.0%



Gugulethu Age	Black African		Coloured		Asian		White		Other		Total	
	Num	%	Num	%	Num	%	Num	%	Num	%	Num	%
0 to 4 years	10 853	11.2%	92	10.7%	14	17.9%	5	11.4%	23	5.5%	10 987	11.2%
5 to 14 years	14 419	14.9%	123	14.3%	8	10.3%	1	2.3%	19	4.6%	14 570	14.8%
15 to 24 years	18 667	19.2%	149	17.3%	19	24.4%	9	20.5%	116	28.0%	18 960	19.3%
25 to 64 years	49 606	51.1%	436	50.7%	34	43.6%	25	56.8%	250	60.2%	50 351	51.1%
65 years and older	3 526	3.6%	60	7.0%	3	3.8%	4	9.1%	7	1.7%	3 600	3.7%
Total	97 071	100.0%	860	100.0%	78	100.0%	44	100.0%	415	100.0%	98 468	100.0%

Gugulethu Adult Education (for all aged 20+)	Black African		Coloured		Asian		White		Other		Total	
	Num	%	Num	%	Num	%	Num	%	Num	%	Num	%
No schooling	1 362	2.1%	15	2.7%	6	12.5%	3	7.7%	51	14.7%	1 437	2.2%
Some primary	5 457	8.5%	93	16.9%	3	6.3%	6	15.4%	30	8.6%	5 589	8.6%
Completed primary	2 607	4.1%	42	7.7%	6	12.5%	0	0.0%	15	4.3%	2 670	4.1%
Some secondary	30 477	47.7%	288	52.5%	21	43.8%	15	38.5%	117	33.6%	30 918	47.7%
Grade 12	20 103	31.5%	108	19.7%	9	18.8%	9	23.1%	108	31.0%	20 337	31.4%
Higher	3 654	5.7%	3	0.5%	3	6.3%	6	15.4%	21	6.0%	3 687	5.7%
Other	183	0.3%	0	0.0%	0	0.0%	0	0.0%	6	1.7%	189	0.3%
Total	63 843	100.0%	549	100.0%	48	100.0%	39	100.0%	348	100.0%	64 827	100.0%

[Go to top of document](#)

Economic Profile – 2011 Census

Gugulethu Labour Force Indicators	Black African	Coloured	Asian	White	Other	Total
Population aged 15 to 64 years	68 274	585	57	39	363	69 318
Labour Force	44 382	345	36	24	309	45 096
Employed	26 700	195	30	15	270	27 210
Unemployed	17 682	150	6	9	39	17 886
Not Economically Active	23 892	240	21	15	54	24 222
Discouraged Work-seekers	3 645	33	0	3	3	3 684
Other not economically active	20 247	207	21	12	51	20 538
Rates %						
Unemployment rate	39.84%	43.48%	16.67%	37.50%	12.62%	39.66%
Labour absorption rate	39.11%	33.33%	52.63%	38.46%	74.38%	39.25%
Labour Force participation rate	65.01%	58.97%	63.16%	61.54%	85.12%	65.06%

Definitions:

Unemployment rate is the proportion of the labour force that is unemployed.

The **labour absorption rate** is the proportion of working age (15 to 64 years) population that is employed.

The **labour force participation rate** is the proportion of the working age population that is either employed or unemployed.

Note: Based on available data as supplied by Statistics South Africa, the people categorised as living in collective living quarters are included in the "Other not economically active" category.

Gugulethu Monthly Household Income	Black African		Coloured		Asian		White		Other		Total	
	Num	%	Num	%	Num	%	Num	%	Num	%	Num	%
No income	5 643	19.3%	33	16.7%	0	0.0%	0	0.0%	21	16.3%	5 697	19.3%
R 1 - R 1 600	8 436	28.9%	72	36.4%	6	33.3%	3	20.0%	24	18.6%	8 541	28.9%
R 1 601 - R 3 200	6 765	23.2%	36	18.2%	3	16.7%	6	40.0%	33	25.6%	6 843	23.2%
R 3 201 - R 6 400	4 473	15.3%	36	18.2%	3	16.7%	0	0.0%	39	30.2%	4 551	15.4%
R 6 401 - R 12 800	2 487	8.5%	12	6.1%	3	16.7%	3	20.0%	6	4.7%	2 511	8.5%
R 12 801 - R 25 600	978	3.4%	6	3.0%	0	0.0%	0	0.0%	6	4.7%	990	3.3%
R 25 601 - R 51 200	327	1.1%	3	1.5%	3	16.7%	3	20.0%	0	0.0%	336	1.1%
R 51 201 - R 102 400	45	0.2%	0	0.0%	0	0.0%	0	0.0%	0	0.0%	45	0.2%
R 102 401 or more	39	0.1%	0	0.0%	0	0.0%	0	0.0%	0	0.0%	39	0.1%
Unspecified	0	0.0%	0	0.0%	0	0.0%	0	0.0%	0	0.0%	0	0.0%
Total	29 193	100.0%	198	100.0%	18	100.0%	15	100.0%	129	100.0%	29 553	100.0%

[Go to top of document](#)

Dwelling Profile – 2011 Census

Gugulethu Type of Dwelling	Black African		Coloured		Asian		White		Other		Total	
	Num	%	Num	%	Num	%	Num	%	Num	%	Num	%
Formal Dwelling	15 183	52.0%	142	69.6%	10	55.6%	14	82.4%	87	63.0%	15 436	52.2%
Informal dwelling / shack in backyard	1 839	6.3%	25	12.3%	0	0.0%	0	0.0%	19	13.8%	1 883	6.4%
Informal dwelling / shack NOT in backyard	11 968	41.0%	37	18.1%	8	44.4%	3	17.6%	26	18.8%	12 042	40.7%
Other	211	0.7%	0	0.0%	0	0.0%	0	0.0%	6	4.3%	217	0.7%
Total	29 201	100.0%	204	100.0%	18	100.0%	17	100.0%	138	100.0%	29 578	100.0%

Gugulethu Tenure Status	Black African		Coloured		Asian		White		Other		Total	
	Num	%	Num	%	Num	%	Num	%	Num	%	Num	%
Owned and fully paid off	12 479	42.7%	83	40.9%	4	22.2%	7	41.2%	13	9.6%	12 586	42.6%
Owned but not yet paid off	1 275	4.4%	18	8.9%	1	5.6%	5	29.4%	3	2.2%	1 302	4.4%
Rented	5 434	18.6%	54	26.6%	6	33.3%	2	11.8%	110	80.9%	5 606	19.0%
Occupied rent-free	9 442	32.3%	47	23.2%	6	33.3%	3	17.6%	10	7.4%	9 508	32.1%
Other	571	2.0%	1	0.5%	1	5.6%	0	0.0%	0	0.0%	573	1.9%
Total	29 201	100.0%	203	100.0%	18	100.0%	17	100.0%	136	100.0%	29 575	100.0%

[Go to top of document](#)

Household Services Profile – 2011 Census

Gugulethu Access to Piped Water	Black African		Coloured		Asian		White		Other		Total	
	Num	%	Num	%	Num	%	Num	%	Num	%	Num	%
Piped water inside dwelling	13 848	47.4%	135	66.2%	9	42.9%	12	66.7%	69	50.0%	14 073	47.6%
Piped water inside yard	2 955	10.1%	36	17.6%	0	0.0%	3	16.7%	42	30.4%	3 036	10.3%
Piped water outside yard: < 200m	8 997	30.8%	24	11.8%	9	42.9%	0	0.0%	21	15.2%	9 051	30.6%
Piped water outside yard: > 200m	3 183	10.9%	9	4.4%	3	14.3%	3	16.7%	6	4.3%	3 204	10.8%
No access to piped water	216	0.7%	0	0.0%	0	0.0%	0	0.0%	0	0.0%	216	0.7%
Total	29 199	100.0%	204	100.0%	21	100.0%	18	100.0%	138	100.0%	29 580	100.0%

Gugulethu Toilet Facility	Black African		Coloured		Asian		White		Other		Total	
	Num	%	Num	%	Num	%	Num	%	Num	%	Num	%
Flush toilet (connected to sewerage system)	18 219	62.4%	165	79.7%	9	60.0%	15	100.0%	108	80.0%	18 516	62.6%
Flush toilet (with septic tank)	915	3.1%	3	1.4%	0	0.0%	0	0.0%	6	4.4%	924	3.1%
Chemical toilet	39	0.1%	0	0.0%	0	0.0%	0	0.0%	0	0.0%	39	0.1%
Pit toilet with ventilation (VIP)	24	0.1%	0	0.0%	0	0.0%	0	0.0%	0	0.0%	24	0.1%
Pit toilet without ventilation	66	0.2%	0	0.0%	0	0.0%	0	0.0%	0	0.0%	66	0.2%
Bucket toilet	8 733	29.9%	30	14.5%	6	40.0%	0	0.0%	18	13.3%	8 787	29.7%
Other	381	1.3%	3	1.4%	0	0.0%	0	0.0%	0	0.0%	384	1.3%
None	825	2.8%	6	2.9%	0	0.0%	0	0.0%	3	2.2%	834	2.8%
Total	29 202	100.0%	207	100.0%	15	100.0%	15	100.0%	135	100.0%	29 574	100.0%

Gugulethu Refuse Disposal	Black African		Coloured		Asian		White		Other		Total	
	Num	%	Num	%	Num	%	Num	%	Num	%	Num	%
Removed by local authority/private company at least once a week	26 064	89.2%	195	95.6%	15	100.0%	15	100.0%	129	93.5%	26 418	89.3%
Removed by local authority/private company less often	654	2.2%	0	0.0%	0	0.0%	0	0.0%	0	0.0%	654	2.2%
Communal refuse dump	1 371	4.7%	6	2.9%	0	0.0%	0	0.0%	3	2.2%	1 380	4.7%
Own refuse dump	990	3.4%	3	1.5%	0	0.0%	0	0.0%	6	4.3%	999	3.4%
No rubbish disposal	72	0.2%	0	0.0%	0	0.0%	0	0.0%	0	0.0%	72	0.2%
Other	60	0.2%	0	0.0%	0	0.0%	0	0.0%	0	0.0%	60	0.2%
Total	29 211	100.0%	204	100.0%	15	100.0%	15	100.0%	138	100.0%	29 583	100.0%

[Go to top of document](#)

Household Services Profile continued – 2011 Census

Gugulethu Energy used for Lighting	Black African		Coloured		Asian		White		Other		Total	
	Num	%	Num	%	Num	%	Num	%	Num	%	Num	%
Electricity	28 422	97.3%	198	97.1%	18	100.0%	15	100.0%	132	97.8%	28 785	97.3%
Gas	33	0.1%	0	0.0%	0	0.0%	0	0.0%	0	0.0%	33	0.1%
Paraffin	390	1.3%	0	0.0%	0	0.0%	0	0.0%	0	0.0%	390	1.3%
Candles	246	0.8%	3	1.5%	0	0.0%	0	0.0%	3	2.2%	252	0.9%
Solar	42	0.1%	0	0.0%	0	0.0%	0	0.0%	0	0.0%	42	0.1%
None	72	0.2%	3	1.5%	0	0.0%	0	0.0%	0	0.0%	75	0.3%
Total	29 205	100.0%	204	100.0%	18	100.0%	15	100.0%	135	100.0%	29 577	100.0%

Gugulethu Energy used for Cooking	Black African		Coloured		Asian		White		Other		Total	
	Num	%	Num	%	Num	%	Num	%	Num	%	Num	%
Electricity	27 630	94.6%	192	95.5%	18	100.0%	15	83.3%	129	93.5%	27 984	94.6%
Gas	549	1.9%	6	3.0%	0	0.0%	3	16.7%	3	2.2%	561	1.9%
Paraffin	705	2.4%	3	1.5%	0	0.0%	0	0.0%	3	2.2%	711	2.4%
Wood	18	0.1%	0	0.0%	0	0.0%	0	0.0%	0	0.0%	18	0.1%
Coal	6	0.0%	0	0.0%	0	0.0%	0	0.0%	0	0.0%	6	0.0%
Animal dung	12	0.0%	0	0.0%	0	0.0%	0	0.0%	0	0.0%	12	0.0%
Solar	45	0.2%	0	0.0%	0	0.0%	0	0.0%	0	0.0%	45	0.2%
Other	27	0.1%	0	0.0%	0	0.0%	0	0.0%	0	0.0%	27	0.1%
None	210	0.7%	0	0.0%	0	0.0%	0	0.0%	3	2.2%	213	0.7%
Total	29 202	100.0%	201	100.0%	18	100.0%	18	100.0%	138	100.0%	29 577	100.0%

Gugulethu Energy used for Heating	Black African		Coloured		Asian		White		Other		Total	
	Num	%	Num	%	Num	%	Num	%	Num	%	Num	%
Electricity	11 175	38.3%	54	26.5%	9	42.9%	12	80.0%	51	37.8%	11 301	38.2%
Gas	897	3.1%	6	2.9%	0	0.0%	0	0.0%	6	4.4%	909	3.1%
Paraffin	11 145	38.1%	81	39.7%	9	42.9%	3	20.0%	30	22.2%	11 268	38.1%
Wood	30	0.1%	0	0.0%	0	0.0%	0	0.0%	0	0.0%	30	0.1%
Coal	48	0.2%	0	0.0%	0	0.0%	0	0.0%	0	0.0%	48	0.2%
Animal dung	15	0.1%	0	0.0%	3	14.3%	0	0.0%	0	0.0%	18	0.1%
Solar	36	0.1%	0	0.0%	0	0.0%	0	0.0%	0	0.0%	36	0.1%
Other	3	0.0%	0	0.0%	0	0.0%	0	0.0%	0	0.0%	3	0.0%
None	5 865	20.1%	63	30.9%	0	0.0%	0	0.0%	48	35.6%	5 976	20.2%
Total	29 214	100.0%	204	100.0%	21	100.0%	15	100.0%	135	100.0%	29 589	100.0%

[Go to top of document](#)