

# City of Cape Town – 2011 Census Suburb Helderberg Small Holdings

July 2013

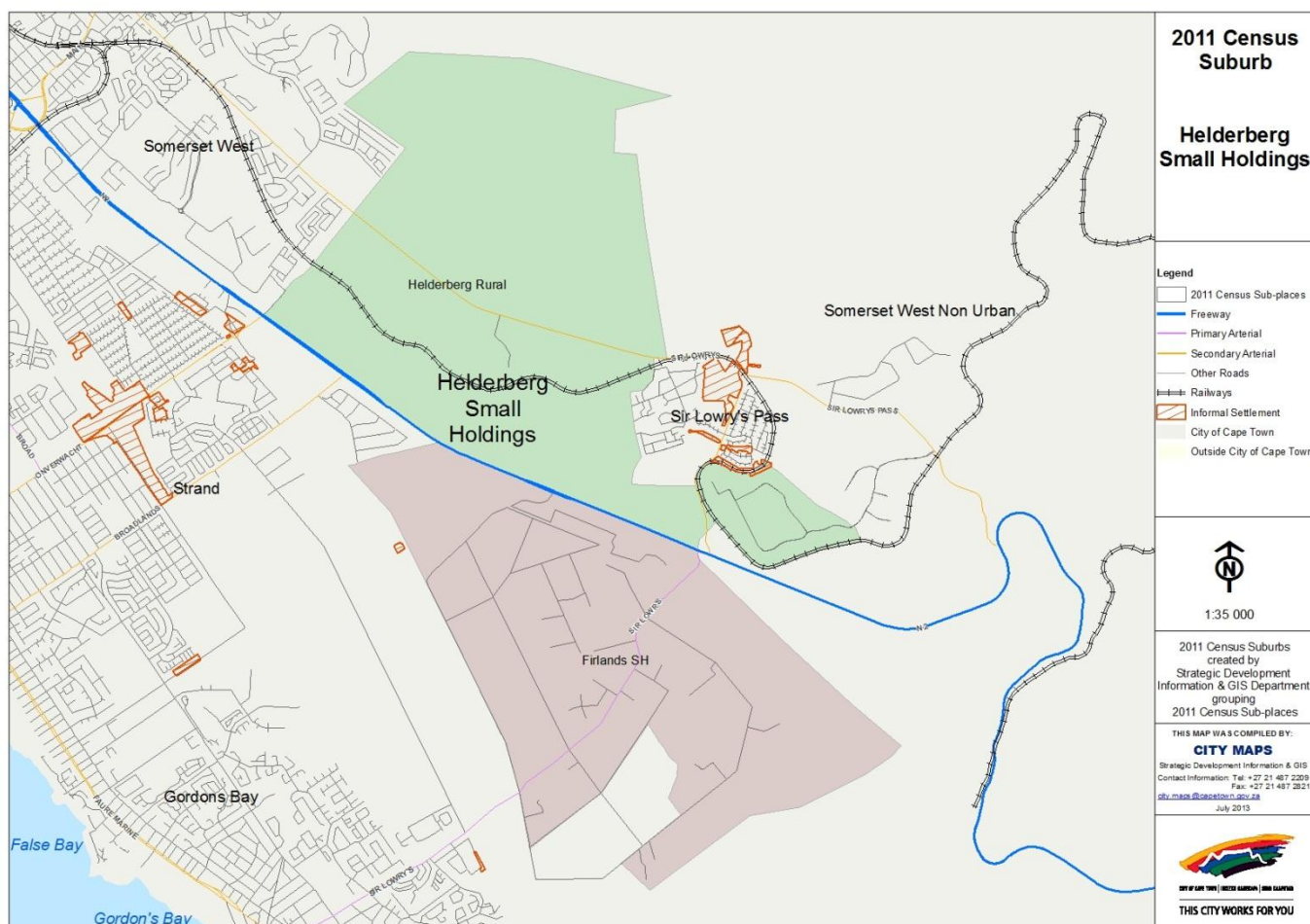
Compiled by Strategic Development Information and GIS Department (SDI&GIS), City of Cape Town  
2011 Census data supplied by Statistics South Africa  
(Based on information available at the time of compilation as released by Statistics South Africa)

The 2011 Census suburbs (190) have been created by SDI&GIS grouping the 2011 Census sub-places using GIS and December 2011 aerial photography. A sub-place is defined by Statistics South Africa “is the second (lowest) level of the place name category, namely a suburb, section or zone of an (apartheid) township, smallholdings, village, sub-village, ward or informal settlement.”

[Suburb Overview](#), [Demographic Profile](#), [Economic Profile](#), [Dwelling Profile](#), [Household Services Profile](#)

## 2011 Census Suburb Description

2011 Census suburb Helderberg Small Holdings includes the following sub-places: Firlands SH, Helderberg Rural.



**Data Notes:**

- The following databases from Statistics South Africa (SSA) software were used to extract the data for the profiles:  
Demographic Profile – Descriptive and Education databases  
Economic Profile – Labour Force and Head of Household databases  
Dwelling Profile – Dwellings database  
Household Services Profile – Household Services database
- In some Census suburbs there may be no data for households, or a very low number, as the Census suburb has population mainly living in collective living quarters (e.g. hotels, hostels, students' residences, hospitals, prisons and other institutions) or is an industrial or commercial area. In these instances the number of households is not applicable. All tables have the data included, even if at times they are "0", for completeness. The tables relating to population, age and labour force indicators would include the population living in these collective living quarters.
- The Census suburbs where the population is categorised as living mainly in collective living quarters or is an industrial or commercial area, the average household size has been excluded as it is not applicable. There are some Census suburbs with an average household size that have a small percentage of the population living in collective living quarters within that Census suburb, and this could artificially inflate the average household size.

**2011 Census Suburb Overview**

<b>2011 Census Suburb Helderberg Small Holdings</b>	<b>2011</b>
Population	929
Households	264
Average Household Size	3.52

In 2011 the population of 2011 Census suburb Helderberg Small Holdings was 929 and the number of households was 264. The average household size was 3.52.

A household is defined as a group of persons who live together, and provide themselves jointly with food or other essentials for living, or a single person who lives alone (Statistics South Africa).

The population and household numbers above are to be used and quoted as the official numbers for this 2011 Census suburb for 2011.

**Key results for 2011 Census Suburb Helderberg Small Holdings:**

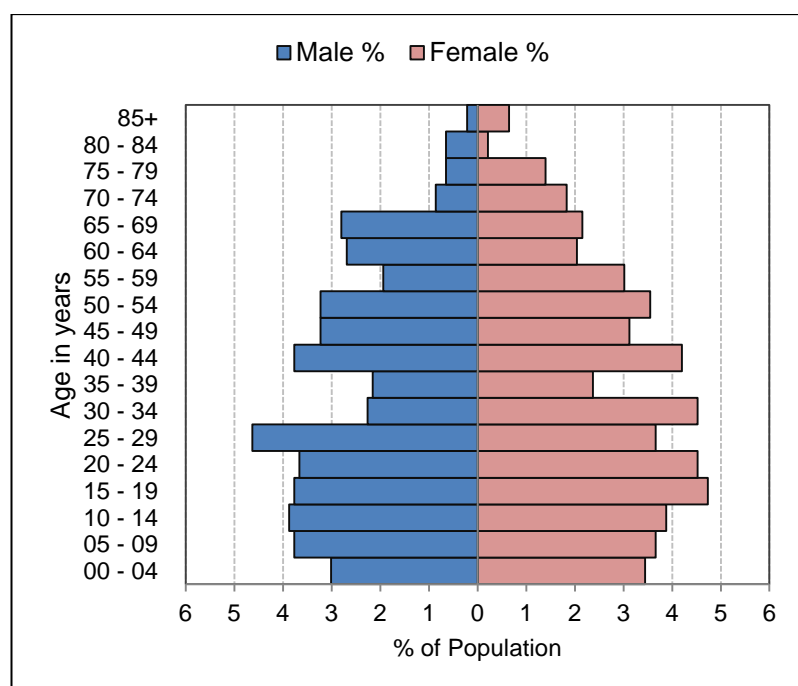
- The population is predominantly White (57%), Black African (21%) and Coloured (19%).
- 66% of those aged 20 years and older have completed Grade 12 or higher.
- 92% of the labour force (aged 15 to 64) is employed.
- 36% of households have a monthly income of R3 200 or less.
- 92% of households live in formal dwellings.
- 95% of households have access to piped water in their dwelling or inside their yard.
- 64% of households have access to a flush toilet connected to the public sewer system.
- 64% of households have their refuse removed at least once a week.
- 97% of households use electricity for lighting in their dwelling.

**Note:** There are small variations in the total population and the number of households in the tables which follow. These occur as Statistics South Africa had to calculate the true population to correct omissions and double counts in the enumeration process. In addition when the data is extracted using the Statistics South Africa software, it randomly rounds off all cells to a base number 3, including the totals. These variations are not significant.

[Go to top of document](#)

## Demographic Profile – 2011 Census

Helderberg Small Holdings Population	Male		Female		Total	
	Num	%	Num	%	Num	%
Black African	105	11.3%	91	9.8%	196	21.1%
Coloured	75	8.1%	102	11.0%	177	19.0%
Asian	5	0.5%	6	0.6%	11	1.2%
White	247	26.6%	287	30.9%	534	57.4%
Other	6	0.6%	6	0.6%	12	1.3%
Total	438	47.1%	492	52.9%	930	100.0%



Helderberg Small Holdings Age	Black African		Coloured		Asian		White		Other		Total	
	Num	%	Num	%	Num	%	Num	%	Num	%	Num	%
0 to 4 years	13	6.7%	18	10.2%	0	0.0%	29	5.4%	0	0.0%	60	6.5%
5 to 14 years	26	13.3%	33	18.6%	0	0.0%	81	15.1%	1	8.3%	141	15.2%
15 to 24 years	48	24.6%	29	16.4%	2	20.0%	72	13.5%	3	25.0%	154	16.6%
25 to 64 years	102	52.3%	83	46.9%	7	70.0%	270	50.5%	8	66.7%	470	50.6%
65 years and older	6	3.1%	14	7.9%	1	10.0%	83	15.5%	0	0.0%	104	11.2%
Total	195	100.0%	177	100.0%	10	100.0%	535	100.0%	12	100.0%	929	100.0%

Helderberg Small Holdings Adult Education (for all aged 20+)	Black African		Coloured		Asian		White		Other		Total	
	Num	%	Num	%	Num	%	Num	%	Num	%	Num	%
No schooling	3	3.8%	3	2.8%	0	0.0%	6	1.7%	0	0.0%	12	2.2%
Some primary	0	0.0%	30	27.8%	0	0.0%	6	1.7%	0	0.0%	36	6.5%
Completed primary	6	7.7%	12	11.1%	0	0.0%	3	0.8%	0	0.0%	21	3.8%
Some secondary	24	30.8%	21	19.4%	3	100.0%	69	19.5%	0	0.0%	117	21.2%
Grade 12	33	42.3%	27	25.0%	0	0.0%	111	31.4%	6	66.7%	177	32.1%
Higher	12	15.4%	15	13.9%	0	0.0%	156	44.1%	3	33.3%	186	33.7%
Other	0	0.0%	0	0.0%	0	0.0%	3	0.8%	0	0.0%	3	0.5%
Total	78	100.0%	108	100.0%	3	100.0%	354	100.0%	9	100.0%	552	100.0%

[Go to top of document](#)

## Economic Profile – 2011 Census

Helderberg Small Holdings Labour Force Indicators	Black African	Coloured	Asian	White	Other	Total
<b>Population aged 15 to 64 years</b>	<b>153</b>	<b>108</b>	<b>9</b>	<b>345</b>	<b>12</b>	<b>627</b>
<b>Labour Force</b>	<b>75</b>	<b>78</b>	<b>9</b>	<b>216</b>	<b>6</b>	<b>384</b>
Employed	72	72	3	201	6	354
Unemployed	3	6	6	15	0	30
<b>Not Economically Active</b>	<b>78</b>	<b>30</b>	<b>0</b>	<b>129</b>	<b>6</b>	<b>243</b>
Discouraged Work-seekers	6	0	0	12	0	18
Other not economically active	72	30	0	117	6	225
<b>Rates %</b>						
Unemployment rate	4.00%	7.69%	66.67%	6.94%	0.00%	7.81%
Labour absorption rate	47.06%	66.67%	33.33%	58.26%	50.00%	56.46%
Labour Force participation rate	49.02%	72.22%	100.00%	62.61%	50.00%	61.24%

### Definitions:

**Unemployment rate** is the proportion of the labour force that is unemployed.

The **labour absorption rate** is the proportion of working age (15 to 64 years) population that is employed.

The **labour force participation rate** is the proportion of the working age population that is either employed or unemployed.

**Note:** Based on available data as supplied by Statistics South Africa, the people categorised as living in collective living quarters are included in the "Other not economically active" category.

Helderberg Small Holdings Monthly Household Income	Black African		Coloured		Asian		White		Other		Total	
	Num	%	Num	%	Num	%	Num	%	Num	%	Num	%
No income	6	11.1%	6	16.7%	0	0.0%	15	8.6%	0	0.0%	27	9.8%
R 1 - R 1 600	12	22.2%	0	0.0%	0	0.0%	15	8.6%	3	50.0%	30	10.9%
R 1 601 - R 3 200	12	22.2%	12	33.3%	0	0.0%	15	8.6%	3	50.0%	42	15.2%
R 3 201 - R 6 400	15	27.8%	9	25.0%	0	0.0%	24	13.8%	0	0.0%	48	17.4%
R 6 401 - R 12 800	3	5.6%	3	8.3%	0	0.0%	33	19.0%	0	0.0%	39	14.1%
R 12 801 - R 25 600	3	5.6%	0	0.0%	3	50.0%	24	13.8%	0	0.0%	30	10.9%
R 25 601 - R 51 200	0	0.0%	3	8.3%	3	50.0%	30	17.2%	0	0.0%	36	13.0%
R 51 201 - R 102 400	3	5.6%	0	0.0%	0	0.0%	12	6.9%	0	0.0%	15	5.4%
R 102 401 or more	0	0.0%	3	8.3%	0	0.0%	3	1.7%	0	0.0%	6	2.2%
Unspecified	0	0.0%	0	0.0%	0	0.0%	3	1.7%	0	0.0%	3	1.1%
Total	54	100.0%	36	100.0%	6	100.0%	174	100.0%	6	100.0%	276	100.0%

[Go to top of document](#)

## Dwelling Profile – 2011 Census

Helderberg Small Holdings Type of Dwelling	Black African		Coloured		Asian		White		Other		Total	
	Num	%	Num	%	Num	%	Num	%	Num	%	Num	%
Formal Dwelling	38	76.0%	33	91.7%	2	66.7%	166	97.6%	3	75.0%	242	92.0%
Informal dwelling / shack in backyard	2	4.0%	0	0.0%	0	0.0%	0	0.0%	0	0.0%	2	0.8%
Informal dwelling / shack NOT in backyard	7	14.0%	1	2.8%	1	33.3%	0	0.0%	0	0.0%	9	3.4%
Other	3	6.0%	2	5.6%	0	0.0%	4	2.4%	1	25.0%	10	3.8%
Total	50	100.0%	36	100.0%	3	100.0%	170	100.0%	4	100.0%	263	100.0%

Helderberg Small Holdings Tenure Status	Black African		Coloured		Asian		White		Other		Total	
	Num	%	Num	%	Num	%	Num	%	Num	%	Num	%
Owned and fully paid off	5	10.0%	6	16.7%	1	33.3%	54	31.4%	0	0.0%	66	24.9%
Owned but not yet paid off	7	14.0%	5	13.9%	0	0.0%	37	21.5%	0	0.0%	49	18.5%
Rented	14	28.0%	7	19.4%	1	33.3%	59	34.3%	1	25.0%	82	30.9%
Occupied rent-free	21	42.0%	18	50.0%	1	33.3%	14	8.1%	3	75.0%	57	21.5%
Other	3	6.0%	0	0.0%	0	0.0%	8	4.7%	0	0.0%	11	4.2%
Total	50	100.0%	36	100.0%	3	100.0%	172	100.0%	4	100.0%	265	100.0%

[Go to top of document](#)

## Household Services Profile – 2011 Census

Helderberg Small Holdings Access to Piped Water	Black African		Coloured		Asian		White		Other		Total	
	Num	%	Num	%	Num	%	Num	%	Num	%	Num	%
Piped water inside dwelling	30	62.5%	27	75.0%	3	100.0%	168	98.2%	0	0.0%	228	87.4%
Piped water inside yard	9	18.8%	6	16.7%	0	0.0%	3	1.8%	3	100.0%	21	8.0%
Piped water outside yard: < 200m	3	6.3%	3	8.3%	0	0.0%	0	0.0%	0	0.0%	6	2.3%
Piped water outside yard: > 200m	3	6.3%	0	0.0%	0	0.0%	0	0.0%	0	0.0%	3	1.1%
No access to piped water	3	6.3%	0	0.0%	0	0.0%	0	0.0%	0	0.0%	3	1.1%
Total	48	100.0%	36	100.0%	3	100.0%	171	100.0%	3	100.0%	261	100.0%

Helderberg Small Holdings Toilet Facility	Black African		Coloured		Asian		White		Other		Total	
	Num	%	Num	%	Num	%	Num	%	Num	%	Num	%
Flush toilet (connected to sewerage system)	39	76.5%	27	81.8%	0	0.0%	96	56.1%	3	100.0%	165	64.0%
Flush toilet (with septic tank)	6	11.8%	3	9.1%	0	0.0%	72	42.1%	0	0.0%	81	31.4%
Chemical toilet	0	0.0%	3	9.1%	0	0.0%	0	0.0%	0	0.0%	3	1.2%
Pit toilet with ventilation (VIP)	3	5.9%	0	0.0%	0	0.0%	3	1.8%	0	0.0%	6	2.3%
Pit toilet without ventilation	0	0.0%	0	0.0%	0	0.0%	0	0.0%	0	0.0%	0	0.0%
Bucket toilet	3	5.9%	0	0.0%	0	0.0%	0	0.0%	0	0.0%	3	1.2%
Other	0	0.0%	0	0.0%	0	0.0%	0	0.0%	0	0.0%	0	0.0%
None	0	0.0%	0	0.0%	0	0.0%	0	0.0%	0	0.0%	0	0.0%
Total	51	100.0%	33	100.0%	0	0.0%	171	100.0%	3	100.0%	258	100.0%

Helderberg Small Holdings Refuse Disposal	Black African		Coloured		Asian		White		Other		Total	
	Num	%	Num	%	Num	%	Num	%	Num	%	Num	%
Removed by local authority/private company at least once a week	33	64.7%	21	53.8%	0	0.0%	117	69.6%	0	0.0%	171	64.0%
Removed by local authority/private company less often	0	0.0%	0	0.0%	3	50.0%	6	3.6%	0	0.0%	9	3.4%
Communal refuse dump	0	0.0%	0	0.0%	0	0.0%	3	1.8%	0	0.0%	3	1.1%
Own refuse dump	15	29.4%	15	38.5%	0	0.0%	33	19.6%	3	100.0%	66	24.7%
No rubbish disposal	0	0.0%	0	0.0%	0	0.0%	6	3.6%	0	0.0%	6	2.2%
Other	3	5.9%	3	7.7%	3	50.0%	3	1.8%	0	0.0%	12	4.5%
Total	51	100.0%	39	100.0%	6	100.0%	168	100.0%	3	100.0%	267	100.0%

[Go to top of document](#)

## Household Services Profile continued – 2011 Census

Helderberg Small Holdings Energy used for Lighting	Black African		Coloured		Asian		White		Other		Total	
	Num	%	Num	%	Num	%	Num	%	Num	%	Num	%
Electricity	48	100.0%	33	91.7%	0	0.0%	171	98.3%	6	100.0%	258	96.6%
Gas	0	0.0%	0	0.0%	3	100.0%	0	0.0%	0	0.0%	3	1.1%
Paraffin	0	0.0%	0	0.0%	0	0.0%	0	0.0%	0	0.0%	0	0.0%
Candles	0	0.0%	3	8.3%	0	0.0%	0	0.0%	0	0.0%	3	1.1%
Solar	0	0.0%	0	0.0%	0	0.0%	3	1.7%	0	0.0%	3	1.1%
None	0	0.0%	0	0.0%	0	0.0%	0	0.0%	0	0.0%	0	0.0%
Total	48	100.0%	36	100.0%	3	100.0%	174	100.0%	6	100.0%	267	100.0%

Helderberg Small Holdings Energy used for Cooking	Black African		Coloured		Asian		White		Other		Total	
	Num	%	Num	%	Num	%	Num	%	Num	%	Num	%
Electricity	42	82.4%	30	90.9%	0	0.0%	111	66.1%	3	100.0%	186	72.9%
Gas	9	17.6%	3	9.1%	0	0.0%	57	33.9%	0	0.0%	69	27.1%
Paraffin	0	0.0%	0	0.0%	0	0.0%	0	0.0%	0	0.0%	0	0.0%
Wood	0	0.0%	0	0.0%	0	0.0%	0	0.0%	0	0.0%	0	0.0%
Coal	0	0.0%	0	0.0%	0	0.0%	0	0.0%	0	0.0%	0	0.0%
Animal dung	0	0.0%	0	0.0%	0	0.0%	0	0.0%	0	0.0%	0	0.0%
Solar	0	0.0%	0	0.0%	0	0.0%	0	0.0%	0	0.0%	0	0.0%
Other	0	0.0%	0	0.0%	0	0.0%	0	0.0%	0	0.0%	0	0.0%
None	0	0.0%	0	0.0%	0	0.0%	0	0.0%	0	0.0%	0	0.0%
Total	51	100.0%	33	100.0%	0	0.0%	168	100.0%	3	100.0%	255	100.0%

Helderberg Small Holdings Energy used for Heating	Black African		Coloured		Asian		White		Other		Total	
	Num	%	Num	%	Num	%	Num	%	Num	%	Num	%
Electricity	39	81.3%	24	72.7%	3	100.0%	114	67.9%	3	100.0%	183	71.8%
Gas	0	0.0%	3	9.1%	0	0.0%	9	5.4%	0	0.0%	12	4.7%
Paraffin	0	0.0%	0	0.0%	0	0.0%	0	0.0%	0	0.0%	0	0.0%
Wood	9	18.8%	6	18.2%	0	0.0%	27	16.1%	0	0.0%	42	16.5%
Coal	0	0.0%	0	0.0%	0	0.0%	3	1.8%	0	0.0%	3	1.2%
Animal dung	0	0.0%	0	0.0%	0	0.0%	0	0.0%	0	0.0%	0	0.0%
Solar	0	0.0%	0	0.0%	0	0.0%	0	0.0%	0	0.0%	0	0.0%
Other	0	0.0%	0	0.0%	0	0.0%	0	0.0%	0	0.0%	0	0.0%
None	0	0.0%	0	0.0%	0	0.0%	15	8.9%	0	0.0%	15	5.9%
Total	48	100.0%	33	100.0%	3	100.0%	168	100.0%	3	100.0%	255	100.0%

[Go to top of document](#)