

City of Cape Town – 2011 Census Suburb Langa

July 2013

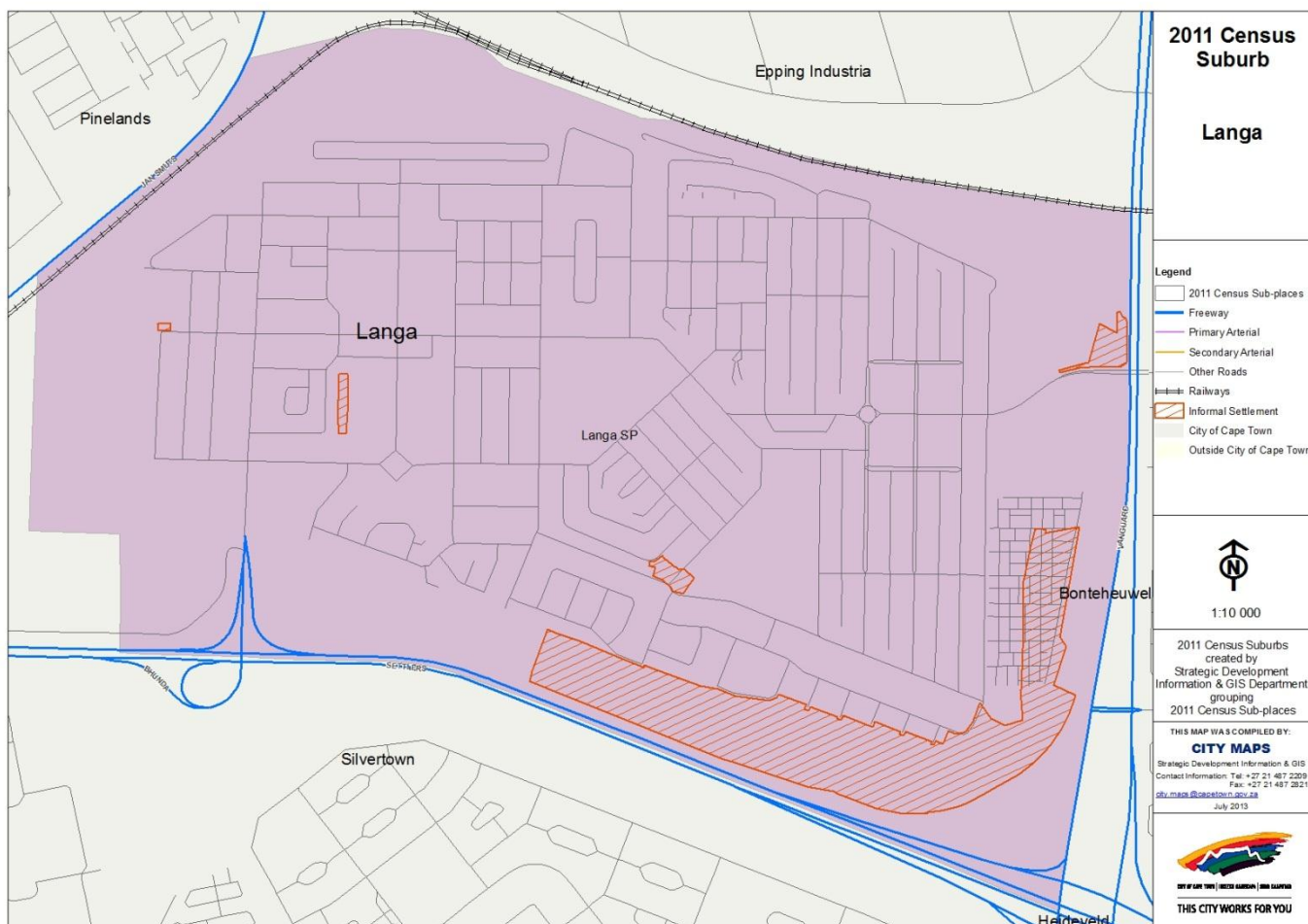
Compiled by Strategic Development Information and GIS Department (SDI&GIS), City of Cape Town
2011 Census data supplied by Statistics South Africa
(Based on information available at the time of compilation as released by Statistics South Africa)

The 2011 Census suburbs (190) have been created by SDI&GIS grouping the 2011 Census sub-places using GIS and December 2011 aerial photography. A sub-place is defined by Statistics South Africa “is the second (lowest) level of the place name category, namely a suburb, section or zone of an (apartheid) township, smallholdings, village, sub-village, ward or informal settlement.”

[Suburb Overview](#), [Demographic Profile](#), [Economic Profile](#), [Dwelling Profile](#), [Household Services Profile](#)

2011 Census Suburb Description

2011 Census suburb Langa includes the following sub-places: Langa SP.



Data Notes:

- The following databases from Statistics South Africa (SSA) software were used to extract the data for the profiles:
Demographic Profile – Descriptive and Education databases
Economic Profile – Labour Force and Head of Household databases
Dwelling Profile – Dwellings database
Household Services Profile – Household Services database
- In some Census suburbs there may be no data for households, or a very low number, as the Census suburb has population mainly living in collective living quarters (e.g. hotels, hostels, students’ residences, hospitals, prisons and other institutions) or is an industrial or commercial area. In these instances the number of households is not applicable. All tables have the data included, even if at times they are “0”, for completeness. The tables relating to population, age and labour force indicators would include the population living in these collective living quarters.
- The Census suburbs where the population is categorised as living mainly in collective living quarters or is an industrial or commercial area, the average household size has been excluded as it is not applicable. There are some Census suburbs with an average household size that have a small percentage of the population living in collective living quarters within that Census suburb, and this could artificially inflate the average household size.

2011 Census Suburb Overview

2011 Census Suburb Langa	2011
Population	52 401
Households	17 400
Average Household Size	3.01

In 2011 the population of 2011 Census suburb Langa was 52 401 and the number of households was 17 400. The average household size was 3.01.

A household is defined as a group of persons who live together, and provide themselves jointly with food or other essentials for living, or a single person who lives alone (Statistics South Africa).

The population and household numbers above are to be used and quoted as the official numbers for this 2011 Census suburb for 2011.

Key results for 2011 Census Suburb Langa:

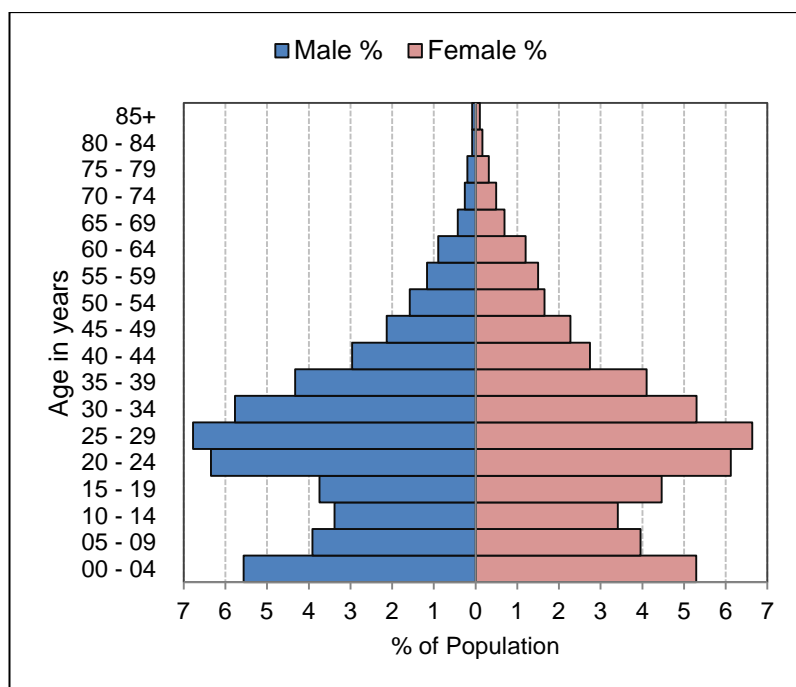
- The population is predominantly Black African (99%).
- 40% of those aged 20 years and older have completed Grade 12 or higher.
- 60% of the labour force (aged 15 to 64) is employed.
- 72% of households have a monthly income of R3 200 or less.
- 58% of households live in formal dwellings.
- 67% of households have access to piped water in their dwelling or inside their yard.
- 72% of households have access to a flush toilet connected to the public sewer system.
- 94% of households have their refuse removed at least once a week.
- 98% of households use electricity for lighting in their dwelling.

Note: There are small variations in the total population and the number of households in the tables which follow. These occur as Statistics South Africa had to calculate the true population to correct omissions and double counts in the enumeration process. In addition when the data is extracted using the Statistics South Africa software, it randomly rounds off all cells to a base number 3, including the totals. These variations are not significant.

[Go to top of document](#)

Demographic Profile – 2011 Census

Langa Population	Male		Female		Total	
	Num	%	Num	%	Num	%
Black African	25 697	49.0%	26 242	50.1%	51 939	99.1%
Coloured	101	0.2%	99	0.2%	200	0.4%
Asian	21	0.0%	19	0.0%	40	0.1%
White	15	0.0%	23	0.0%	38	0.1%
Other	153	0.3%	31	0.1%	184	0.4%
Total	25 987	49.6%	26 414	50.4%	52 401	100.0%



Langa Age	Black African		Coloured		Asian		White		Other		Total	
	Num	%	Num	%	Num	%	Num	%	Num	%	Num	%
0 to 4 years	5 642	10.9%	28	13.9%	7	18.4%	1	2.6%	8	4.3%	5 686	10.9%
5 to 14 years	7 636	14.7%	30	14.9%	6	15.8%	3	7.9%	6	3.2%	7 681	14.7%
15 to 24 years	10 735	20.7%	45	22.4%	11	28.9%	8	21.1%	37	19.9%	10 836	20.7%
25 to 64 years	26 476	51.0%	92	45.8%	13	34.2%	14	36.8%	135	72.6%	26 730	51.0%
65 years and older	1 449	2.8%	6	3.0%	1	2.6%	12	31.6%	0	0.0%	1 468	2.8%
Total	51 938	100.0%	201	100.0%	38	100.0%	38	100.0%	186	100.0%	52 401	100.0%

Langa Adult Education (for all aged 20+)	Black African		Coloured		Asian		White		Other		Total	
	Num	%	Num	%	Num	%	Num	%	Num	%	Num	%
No schooling	750	2.2%	3	2.9%	6	25.0%	0	0.0%	9	5.9%	768	2.2%
Some primary	2 838	8.3%	12	11.8%	3	12.5%	0	0.0%	15	9.8%	2 868	8.3%
Completed primary	1 353	3.9%	6	5.9%	0	0.0%	0	0.0%	0	0.0%	1 359	3.9%
Some secondary	15 552	45.4%	36	35.3%	9	37.5%	9	37.5%	72	47.1%	15 678	45.4%
Grade 12	11 319	33.0%	39	38.2%	6	25.0%	9	37.5%	45	29.4%	11 418	33.0%
Higher	2 400	7.0%	6	5.9%	0	0.0%	6	25.0%	12	7.8%	2 424	7.0%
Other	51	0.1%	0	0.0%	0	0.0%	0	0.0%	0	0.0%	51	0.1%
Total	34 263	100.0%	102	100.0%	24	100.0%	24	100.0%	153	100.0%	34 566	100.0%

[Go to top of document](#)

Economic Profile – 2011 Census

Langa Labour Force Indicators	Black African	Coloured	Asian	White	Other	Total
Population aged 15 to 64 years	37 209	138	30	21	171	37 569
Labour Force	24 591	78	21	12	138	24 840
Employed	14 673	48	12	9	111	14 853
Unemployed	9 918	30	9	3	27	9 987
Not Economically Active	12 618	60	9	9	33	12 729
Discouraged Work-seekers	1 446	3	3	0	6	1 458
Other not economically active	11 172	57	6	9	27	11 271
Rates %						
Unemployment rate	40.33%	38.46%	42.86%	25.00%	19.57%	40.21%
Labour absorption rate	39.43%	34.78%	40.00%	42.86%	64.91%	39.54%
Labour Force participation rate	66.09%	56.52%	70.00%	57.14%	80.70%	66.12%

Definitions:

Unemployment rate is the proportion of the labour force that is unemployed.

The **labour absorption rate** is the proportion of working age (15 to 64 years) population that is employed.

The **labour force participation rate** is the proportion of the working age population that is either employed or unemployed.

Note: Based on available data as supplied by Statistics South Africa, the people categorised as living in collective living quarters are included in the "Other not economically active" category.

Langa Monthly Household Income	Black African		Coloured		Asian		White		Other		Total	
	Num	%	Num	%	Num	%	Num	%	Num	%	Num	%
No income	3 834	22.2%	6	13.3%	6	33.3%	3	33.3%	18	22.2%	3 867	22.2%
R 1 - R 1 600	4 659	27.0%	12	26.7%	0	0.0%	3	33.3%	18	22.2%	4 692	27.0%
R 1 601 - R 3 200	3 864	22.4%	12	26.7%	6	33.3%	0	0.0%	21	25.9%	3 903	22.4%
R 3 201 - R 6 400	2 658	15.4%	6	13.3%	6	33.3%	0	0.0%	18	22.2%	2 688	15.5%
R 6 401 - R 12 800	1 380	8.0%	6	13.3%	0	0.0%	3	33.3%	3	3.7%	1 392	8.0%
R 12 801 - R 25 600	597	3.5%	3	6.7%	0	0.0%	0	0.0%	0	0.0%	600	3.4%
R 25 601 - R 51 200	180	1.0%	0	0.0%	0	0.0%	0	0.0%	3	3.7%	183	1.1%
R 51 201 - R 102 400	36	0.2%	0	0.0%	0	0.0%	0	0.0%	0	0.0%	36	0.2%
R 102 401 or more	33	0.2%	0	0.0%	0	0.0%	0	0.0%	0	0.0%	33	0.2%
Unspecified	0	0.0%	0	0.0%	0	0.0%	0	0.0%	0	0.0%	0	0.0%
Total	17 241	100.0%	45	100.0%	18	100.0%	9	100.0%	81	100.0%	17 394	100.0%

[Go to top of document](#)

Dwelling Profile – 2011 Census

Langa Type of Dwelling	Black African		Coloured		Asian		White		Other		Total	
	Num	%	Num	%	Num	%	Num	%	Num	%	Num	%
Formal Dwelling	9 928	57.6%	30	66.7%	8	61.5%	12	92.3%	26	31.3%	10 004	57.5%
Informal dwelling / shack in backyard	2 236	13.0%	12	26.7%	3	23.1%	0	0.0%	41	49.4%	2 292	13.2%
Informal dwelling / shack NOT in backyard	4 658	27.0%	1	2.2%	2	15.4%	1	7.7%	15	18.1%	4 677	26.9%
Other	424	2.5%	2	4.4%	0	0.0%	0	0.0%	1	1.2%	427	2.5%
Total	17 246	100.0%	45	100.0%	13	100.0%	13	100.0%	83	100.0%	17 400	100.0%

Langa Tenure Status	Black African		Coloured		Asian		White		Other		Total	
	Num	%	Num	%	Num	%	Num	%	Num	%	Num	%
Owned and fully paid off	4 022	23.3%	8	17.8%	2	15.4%	5	38.5%	7	8.4%	4 044	23.2%
Owned but not yet paid off	822	4.8%	5	11.1%	0	0.0%	0	0.0%	0	0.0%	827	4.8%
Rented	7 534	43.7%	30	66.7%	7	53.8%	6	46.2%	72	86.7%	7 649	44.0%
Occupied rent-free	4 605	26.7%	2	4.4%	4	30.8%	1	7.7%	4	4.8%	4 616	26.5%
Other	264	1.5%	0	0.0%	0	0.0%	1	7.7%	0	0.0%	265	1.5%
Total	17 247	100.0%	45	100.0%	13	100.0%	13	100.0%	83	100.0%	17 401	100.0%

[Go to top of document](#)

Household Services Profile – 2011 Census

Langa Access to Piped Water	Black African		Coloured		Asian		White		Other		Total	
	Num	%	Num	%	Num	%	Num	%	Num	%	Num	%
Piped water inside dwelling	8 541	49.5%	27	60.0%	6	40.0%	12	100.0%	45	57.7%	8 631	49.6%
Piped water inside yard	2 985	17.3%	15	33.3%	6	40.0%	0	0.0%	21	26.9%	3 027	17.4%
Piped water outside yard: < 200m	4 809	27.9%	3	6.7%	3	20.0%	0	0.0%	12	15.4%	4 827	27.7%
Piped water outside yard: > 200m	798	4.6%	0	0.0%	0	0.0%	0	0.0%	0	0.0%	798	4.6%
No access to piped water	114	0.7%	0	0.0%	0	0.0%	0	0.0%	0	0.0%	114	0.7%
Total	17 247	100.0%	45	100.0%	15	100.0%	12	100.0%	78	100.0%	17 397	100.0%

Langa Toilet Facility	Black African		Coloured		Asian		White		Other		Total	
	Num	%	Num	%	Num	%	Num	%	Num	%	Num	%
Flush toilet (connected to sewerage system)	12 474	72.3%	42	87.5%	9	75.0%	12	80.0%	66	78.6%	12 603	72.4%
Flush toilet (with septic tank)	516	3.0%	0	0.0%	0	0.0%	0	0.0%	0	0.0%	516	3.0%
Chemical toilet	342	2.0%	0	0.0%	0	0.0%	0	0.0%	0	0.0%	342	2.0%
Pit toilet with ventilation (VIP)	9	0.1%	0	0.0%	0	0.0%	0	0.0%	0	0.0%	9	0.1%
Pit toilet without ventilation	12	0.1%	0	0.0%	0	0.0%	0	0.0%	0	0.0%	12	0.1%
Bucket toilet	3 765	21.8%	6	12.5%	3	25.0%	3	20.0%	12	14.3%	3 789	21.8%
Other	24	0.1%	0	0.0%	0	0.0%	0	0.0%	0	0.0%	24	0.1%
None	108	0.6%	0	0.0%	0	0.0%	0	0.0%	6	7.1%	114	0.7%
Total	17 250	100.0%	48	100.0%	12	100.0%	15	100.0%	84	100.0%	17 409	100.0%

Langa Refuse Disposal	Black African		Coloured		Asian		White		Other		Total	
	Num	%	Num	%	Num	%	Num	%	Num	%	Num	%
Removed by local authority/private company at least once a week	16 176	93.8%	39	81.3%	12	100.0%	12	100.0%	78	96.3%	16 317	93.8%
Removed by local authority/private company less often	258	1.5%	3	6.3%	0	0.0%	0	0.0%	0	0.0%	261	1.5%
Communal refuse dump	105	0.6%	0	0.0%	0	0.0%	0	0.0%	0	0.0%	105	0.6%
Own refuse dump	462	2.7%	3	6.3%	0	0.0%	0	0.0%	3	3.7%	468	2.7%
No rubbish disposal	63	0.4%	0	0.0%	0	0.0%	0	0.0%	0	0.0%	63	0.4%
Other	180	1.0%	3	6.3%	0	0.0%	0	0.0%	0	0.0%	183	1.1%
Total	17 244	100.0%	48	100.0%	12	100.0%	12	100.0%	81	100.0%	17 397	100.0%

[Go to top of document](#)

Household Services Profile continued – 2011 Census

Langa Energy used for Lighting	Black African		Coloured		Asian		White		Other		Total	
	Num	%	Num	%	Num	%	Num	%	Num	%	Num	%
Electricity	16 818	97.5%	45	100.0%	12	100.0%	12	100.0%	81	96.4%	16 968	97.5%
Gas	24	0.1%	0	0.0%	0	0.0%	0	0.0%	0	0.0%	24	0.1%
Paraffin	249	1.4%	0	0.0%	0	0.0%	0	0.0%	0	0.0%	249	1.4%
Candles	120	0.7%	0	0.0%	0	0.0%	0	0.0%	3	3.6%	123	0.7%
Solar	21	0.1%	0	0.0%	0	0.0%	0	0.0%	0	0.0%	21	0.1%
None	15	0.1%	0	0.0%	0	0.0%	0	0.0%	0	0.0%	15	0.1%
Total	17 247	100.0%	45	100.0%	12	100.0%	12	100.0%	84	100.0%	17 400	100.0%

Langa Energy used for Cooking	Black African		Coloured		Asian		White		Other		Total	
	Num	%	Num	%	Num	%	Num	%	Num	%	Num	%
Electricity	16 356	94.8%	42	100.0%	12	80.0%	9	100.0%	78	96.3%	16 497	94.8%
Gas	282	1.6%	0	0.0%	3	20.0%	0	0.0%	0	0.0%	285	1.6%
Paraffin	402	2.3%	0	0.0%	0	0.0%	0	0.0%	3	3.7%	405	2.3%
Wood	15	0.1%	0	0.0%	0	0.0%	0	0.0%	0	0.0%	15	0.1%
Coal	6	0.0%	0	0.0%	0	0.0%	0	0.0%	0	0.0%	6	0.0%
Animal dung	9	0.1%	0	0.0%	0	0.0%	0	0.0%	0	0.0%	9	0.1%
Solar	15	0.1%	0	0.0%	0	0.0%	0	0.0%	0	0.0%	15	0.1%
Other	126	0.7%	0	0.0%	0	0.0%	0	0.0%	0	0.0%	126	0.7%
None	39	0.2%	0	0.0%	0	0.0%	0	0.0%	0	0.0%	39	0.2%
Total	17 250	100.0%	42	100.0%	15	100.0%	9	100.0%	81	100.0%	17 397	100.0%

Langa Energy used for Heating	Black African		Coloured		Asian		White		Other		Total	
	Num	%	Num	%	Num	%	Num	%	Num	%	Num	%
Electricity	10 278	59.6%	27	69.2%	9	60.0%	12	80.0%	45	51.7%	10 371	59.6%
Gas	360	2.1%	0	0.0%	0	0.0%	0	0.0%	0	0.0%	360	2.1%
Paraffin	3 480	20.2%	6	15.4%	3	20.0%	0	0.0%	18	20.7%	3 507	20.1%
Wood	39	0.2%	0	0.0%	0	0.0%	0	0.0%	0	0.0%	39	0.2%
Coal	9	0.1%	0	0.0%	0	0.0%	0	0.0%	0	0.0%	9	0.1%
Animal dung	9	0.1%	0	0.0%	0	0.0%	0	0.0%	0	0.0%	9	0.1%
Solar	15	0.1%	0	0.0%	0	0.0%	0	0.0%	0	0.0%	15	0.1%
Other	0	0.0%	0	0.0%	0	0.0%	0	0.0%	0	0.0%	0	0.0%
None	3 060	17.7%	6	15.4%	3	20.0%	3	20.0%	24	27.6%	3 096	17.8%
Total	17 250	100.0%	39	100.0%	15	100.0%	15	100.0%	87	100.0%	17 406	100.0%

[Go to top of document](#)