

City of Cape Town – 2011 Census Suburb Masiphumelele

July 2013

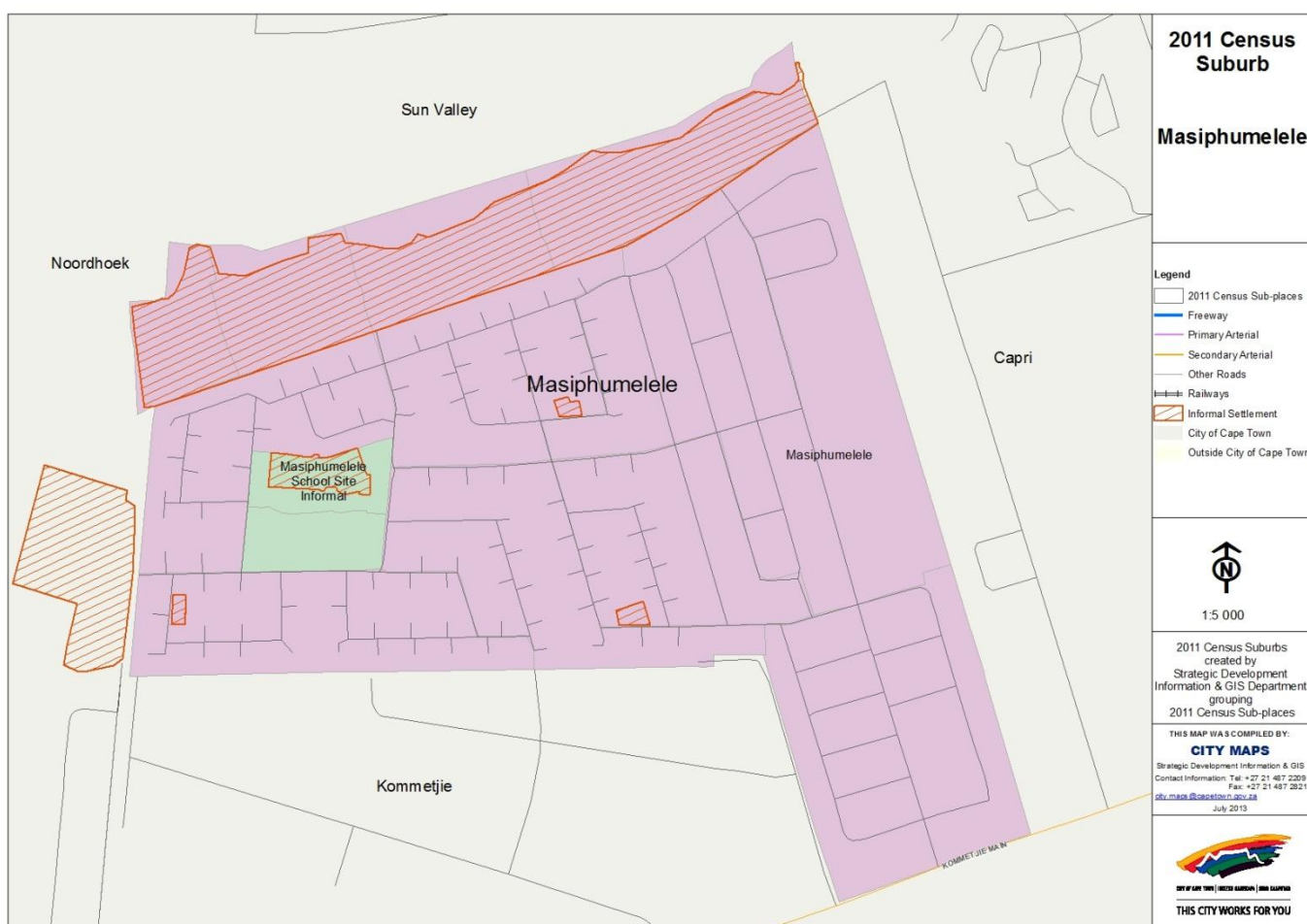
Compiled by Strategic Development Information and GIS Department (SDI&GIS), City of Cape Town
2011 Census data supplied by Statistics South Africa
(Based on information available at the time of compilation as released by Statistics South Africa)

The 2011 Census suburbs (190) have been created by SDI&GIS grouping the 2011 Census sub-places using GIS and December 2011 aerial photography. A sub-place is defined by Statistics South Africa “is the second (lowest) level of the place name category, namely a suburb, section or zone of an (apartheid) township, smallholdings, village, sub-village, ward or informal settlement.”

[Suburb Overview](#), [Demographic Profile](#), [Economic Profile](#), [Dwelling Profile](#), [Household Services Profile](#)

2011 Census Suburb Description

2011 Census suburb Masiphumelele includes the following sub-places: Masiphumelele, Masiphumelele School Site Informal.



Data Notes:

- The following databases from Statistics South Africa (SSA) software were used to extract the data for the profiles:
Demographic Profile – Descriptive and Education databases
Economic Profile – Labour Force and Head of Household databases
Dwelling Profile – Dwellings database
Household Services Profile – Household Services database
- In some Census suburbs there may be no data for households, or a very low number, as the Census suburb has population mainly living in collective living quarters (e.g. hotels, hostels, students’ residences, hospitals, prisons and other institutions) or is an industrial or commercial area. In these instances the number of households is not applicable. All tables have the data included, even if at times they are “0”, for completeness. The tables relating to population, age and labour force indicators would include the population living in these collective living quarters.
- The Census suburbs where the population is categorised as living mainly in collective living quarters or is an industrial or commercial area, the average household size has been excluded as it is not applicable. There are some Census suburbs with an average household size that have a small percentage of the population living in collective living quarters within that Census suburb, and this could artificially inflate the average household size.

2011 Census Suburb Overview

2011 Census Suburb Masiphumelele	2011
Population	21 904
Households	7 413
Average Household Size	2.95

In 2011 the population of 2011 Census suburb Masiphumelele was 21 904 and the number of households was 7 413. The average household size was 2.95.

A household is defined as a group of persons who live together, and provide themselves jointly with food or other essentials for living, or a single person who lives alone (Statistics South Africa).

The population and household numbers above are to be used and quoted as the official numbers for this 2011 Census suburb for 2011.

Key results for 2011 Census Suburb Masiphumelele:

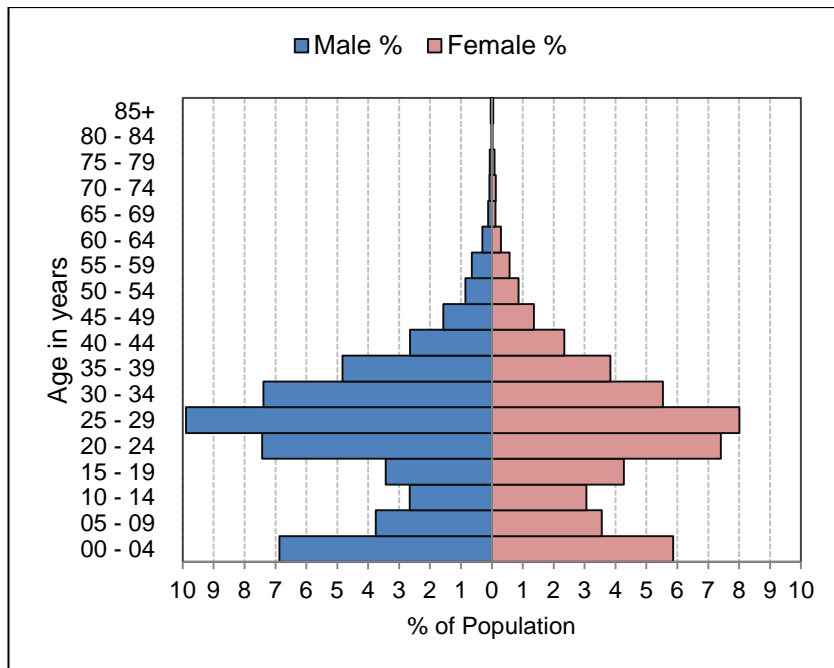
- The population is predominantly Black African (91%).
- 35% of those aged 20 years and older have completed Grade 12 or higher.
- 69% of the labour force (aged 15 to 64) is employed.
- 82% of households have a monthly income of R3 200 or less.
- 27% of households live in formal dwellings.
- 73% of households have access to piped water in their dwelling or inside their yard.
- 91% of households have access to a flush toilet connected to the public sewer system.
- 99% of households have their refuse removed at least once a week.
- 95% of households use electricity for lighting in their dwelling.

Note: There are small variations in the total population and the number of households in the tables which follow. These occur as Statistics South Africa had to calculate the true population to correct omissions and double counts in the enumeration process. In addition when the data is extracted using the Statistics South Africa software, it randomly rounds off all cells to a base number 3, including the totals. These variations are not significant.

[Go to top of document](#)

Demographic Profile – 2011 Census

Masiphumelele Population	Male		Female		Total	
	Num	%	Num	%	Num	%
Black African	10 330	47.2%	9 685	44.2%	20 015	91.4%
Coloured	154	0.7%	164	0.7%	318	1.5%
Asian	15	0.1%	14	0.1%	29	0.1%
White	21	0.1%	11	0.1%	32	0.1%
Other	1 008	4.6%	503	2.3%	1 511	6.9%
Total	11 528	52.6%	10 377	47.4%	21 905	100.0%



Masiphumelele Age	Black African		Coloured		Asian		White		Other		Total	
	Num	%	Num	%	Num	%	Num	%	Num	%	Num	%
0 to 4 years	2 556	12.8%	40	12.5%	4	14.3%	1	3.4%	189	12.5%	2 790	12.7%
5 to 14 years	2 725	13.6%	53	16.6%	3	10.7%	4	13.8%	67	4.4%	2 852	13.0%
15 to 24 years	4 477	22.4%	51	16.0%	10	35.7%	7	24.1%	394	26.1%	4 939	22.5%
25 to 64 years	10 108	50.5%	171	53.6%	11	39.3%	15	51.7%	858	56.7%	11 163	51.0%
65 years and older	149	0.7%	4	1.3%	0	0.0%	2	6.9%	4	0.3%	159	0.7%
Total	20 015	100.0%	319	100.0%	28	100.0%	29	100.0%	1 512	100.0%	21 903	100.0%

Masiphumelele Adult Education (for all aged 20+)	Black African		Coloured		Asian		White		Other		Total	
	Num	%	Num	%	Num	%	Num	%	Num	%	Num	%
No schooling	414	3.2%	9	4.5%	0	0.0%	0	0.0%	63	5.4%	486	3.3%
Some primary	1 134	8.6%	48	23.9%	3	14.3%	6	28.6%	57	4.9%	1 248	8.6%
Completed primary	579	4.4%	18	9.0%	0	0.0%	3	14.3%	42	3.6%	642	4.4%
Some secondary	6 495	49.4%	90	44.8%	9	42.9%	6	28.6%	516	44.0%	7 116	48.9%
Grade 12	4 119	31.4%	33	16.4%	9	42.9%	3	14.3%	465	39.6%	4 629	31.8%
Higher	387	2.9%	3	1.5%	0	0.0%	3	14.3%	27	2.3%	420	2.9%
Other	9	0.1%	0	0.0%	0	0.0%	0	0.0%	3	0.3%	12	0.1%
Total	13 137	100.0%	201	100.0%	21	100.0%	21	100.0%	1 173	100.0%	14 553	100.0%

[Go to top of document](#)

Economic Profile – 2011 Census

Masiphumelele Labour Force Indicators	Black African	Coloured	Asian	White	Other	Total
Population aged 15 to 64 years	14 589	222	21	21	1 251	16 104
Labour Force	11 772	153	15	15	1 077	13 032
Employed	8 016	114	12	9	846	8 997
Unemployed	3 756	39	3	6	231	4 035
Not Economically Active	2 817	69	6	6	174	3 072
Discouraged Work-seekers	258	6	0	0	18	282
Other not economically active	2 559	63	6	6	156	2 790
Rates %						
Unemployment rate	31.91%	25.49%	20.00%	40.00%	21.45%	30.96%
Labour absorption rate	54.95%	51.35%	57.14%	42.86%	67.63%	55.87%
Labour Force participation rate	80.69%	68.92%	71.43%	71.43%	86.09%	80.92%

Definitions:

Unemployment rate is the proportion of the labour force that is unemployed.

The **labour absorption rate** is the proportion of working age (15 to 64 years) population that is employed.

The **labour force participation rate** is the proportion of the working age population that is either employed or unemployed.

Note: Based on available data as supplied by Statistics South Africa, the people categorised as living in collective living quarters are included in the "Other not economically active" category.

Masiphumelele Monthly Household Income	Black African		Coloured		Asian		White		Other		Total	
	Num	%	Num	%	Num	%	Num	%	Num	%	Num	%
No income	1 506	22.1%	9	11.1%	3	50.0%	3	33.3%	93	18.2%	1 614	21.8%
R 1 - R 1 600	2 232	32.8%	27	33.3%	0	0.0%	3	33.3%	165	32.4%	2 427	32.8%
R 1 601 - R 3 200	1 857	27.3%	21	25.9%	3	50.0%	0	0.0%	129	25.3%	2 010	27.1%
R 3 201 - R 6 400	870	12.8%	21	25.9%	0	0.0%	0	0.0%	96	18.8%	987	13.3%
R 6 401 - R 12 800	234	3.4%	3	3.7%	0	0.0%	0	0.0%	15	2.9%	252	3.4%
R 12 801 - R 25 600	72	1.1%	0	0.0%	0	0.0%	3	33.3%	6	1.2%	81	1.1%
R 25 601 - R 51 200	24	0.4%	0	0.0%	0	0.0%	0	0.0%	6	1.2%	30	0.4%
R 51 201 - R 102 400	3	0.0%	0	0.0%	0	0.0%	0	0.0%	0	0.0%	3	0.0%
R 102 401 or more	3	0.0%	0	0.0%	0	0.0%	0	0.0%	0	0.0%	3	0.0%
Unspecified	0	0.0%	0	0.0%	0	0.0%	0	0.0%	0	0.0%	0	0.0%
Total	6 801	100.0%	81	100.0%	6	100.0%	9	100.0%	510	100.0%	7 407	100.0%

[Go to top of document](#)

Dwelling Profile – 2011 Census

Masiphumelele Type of Dwelling	Black African		Coloured		Asian		White		Other		Total	
	Num	%	Num	%	Num	%	Num	%	Num	%	Num	%
Formal Dwelling	1 853	27.3%	35	43.2%	2	33.3%	8	53.3%	71	13.8%	1 969	26.6%
Informal dwelling / shack in backyard	2 717	40.0%	35	43.2%	4	66.7%	6	40.0%	386	75.0%	3 148	42.5%
Informal dwelling / shack NOT in backyard	2 187	32.2%	9	11.1%	0	0.0%	1	6.7%	54	10.5%	2 251	30.4%
Other	40	0.6%	2	2.5%	0	0.0%	0	0.0%	4	0.8%	46	0.6%
Total	6 797	100.0%	81	100.0%	6	100.0%	15	100.0%	515	100.0%	7 414	100.0%

Masiphumelele Tenure Status	Black African		Coloured		Asian		White		Other		Total	
	Num	%	Num	%	Num	%	Num	%	Num	%	Num	%
Owned and fully paid off	860	12.7%	21	25.9%	2	33.3%	1	6.7%	7	1.4%	891	12.0%
Owned but not yet paid off	103	1.5%	1	1.2%	1	16.7%	2	13.3%	1	0.2%	108	1.5%
Rented	3 948	58.1%	36	44.4%	3	50.0%	9	60.0%	475	92.2%	4 471	60.3%
Occupied rent-free	1 813	26.7%	23	28.4%	0	0.0%	3	20.0%	25	4.9%	1 864	25.1%
Other	73	1.1%	0	0.0%	0	0.0%	0	0.0%	7	1.4%	80	1.1%
Total	6 797	100.0%	81	100.0%	6	100.0%	15	100.0%	515	100.0%	7 414	100.0%

[Go to top of document](#)

Household Services Profile – 2011 Census

Masiphumelele Access to Piped Water	Black African		Coloured		Asian		White		Other		Total	
	Num	%	Num	%	Num	%	Num	%	Num	%	Num	%
Piped water inside dwelling	1 386	20.4%	33	42.3%	3	50.0%	3	16.7%	93	18.0%	1 518	20.5%
Piped water inside yard	3 444	50.7%	39	50.0%	3	50.0%	12	66.7%	381	73.8%	3 879	52.3%
Piped water outside yard: < 200m	1 932	28.4%	6	7.7%	0	0.0%	3	16.7%	42	8.1%	1 983	26.8%
Piped water outside yard: > 200m	27	0.4%	0	0.0%	0	0.0%	0	0.0%	0	0.0%	27	0.4%
No access to piped water	6	0.1%	0	0.0%	0	0.0%	0	0.0%	0	0.0%	6	0.1%
Total	6 795	100.0%	78	100.0%	6	100.0%	18	100.0%	516	100.0%	7 413	100.0%

Masiphumelele Toilet Facility	Black African		Coloured		Asian		White		Other		Total	
	Num	%	Num	%	Num	%	Num	%	Num	%	Num	%
Flush toilet (connected to sewerage system)	6 159	90.6%	66	81.5%	6	66.7%	12	100.0%	501	96.0%	6 744	90.9%
Flush toilet (with septic tank)	588	8.6%	12	14.8%	3	33.3%	0	0.0%	15	2.9%	618	8.3%
Chemical toilet	0	0.0%	3	3.7%	0	0.0%	0	0.0%	0	0.0%	3	0.0%
Pit toilet with ventilation (VIP)	6	0.1%	0	0.0%	0	0.0%	0	0.0%	0	0.0%	6	0.1%
Pit toilet without ventilation	6	0.1%	0	0.0%	0	0.0%	0	0.0%	0	0.0%	6	0.1%
Bucket toilet	6	0.1%	0	0.0%	0	0.0%	0	0.0%	0	0.0%	6	0.1%
Other	9	0.1%	0	0.0%	0	0.0%	0	0.0%	3	0.6%	12	0.2%
None	24	0.4%	0	0.0%	0	0.0%	0	0.0%	3	0.6%	27	0.4%
Total	6 798	100.0%	81	100.0%	9	100.0%	12	100.0%	522	100.0%	7 422	100.0%

Masiphumelele Refuse Disposal	Black African		Coloured		Asian		White		Other		Total	
	Num	%	Num	%	Num	%	Num	%	Num	%	Num	%
Removed by local authority/private company at least once a week	6 714	98.7%	66	78.6%	6	100.0%	15	100.0%	510	98.8%	7 311	98.5%
Removed by local authority/private company less often	57	0.8%	12	14.3%	0	0.0%	0	0.0%	0	0.0%	69	0.9%
Communal refuse dump	12	0.2%	0	0.0%	0	0.0%	0	0.0%	3	0.6%	15	0.2%
Own refuse dump	12	0.2%	6	7.1%	0	0.0%	0	0.0%	3	0.6%	21	0.3%
No rubbish disposal	0	0.0%	0	0.0%	0	0.0%	0	0.0%	0	0.0%	0	0.0%
Other	9	0.1%	0	0.0%	0	0.0%	0	0.0%	0	0.0%	9	0.1%
Total	6 804	100.0%	84	100.0%	6	100.0%	15	100.0%	516	100.0%	7 425	100.0%

[Go to top of document](#)

Household Services Profile continued – 2011 Census

Masiphumelele Energy used for Lighting	Black African		Coloured		Asian		White		Other		Total	
	Num	%	Num	%	Num	%	Num	%	Num	%	Num	%
Electricity	6 459	95.1%	78	96.3%	6	100.0%	15	100.0%	510	98.8%	7 068	95.4%
Gas	27	0.4%	0	0.0%	0	0.0%	0	0.0%	3	0.6%	30	0.4%
Paraffin	243	3.6%	0	0.0%	0	0.0%	0	0.0%	0	0.0%	243	3.3%
Candles	39	0.6%	3	3.7%	0	0.0%	0	0.0%	0	0.0%	42	0.6%
Solar	9	0.1%	0	0.0%	0	0.0%	0	0.0%	3	0.6%	12	0.2%
None	15	0.2%	0	0.0%	0	0.0%	0	0.0%	0	0.0%	15	0.2%
Total	6 792	100.0%	81	100.0%	6	100.0%	15	100.0%	516	100.0%	7 410	100.0%

Masiphumelele Energy used for Cooking	Black African		Coloured		Asian		White		Other		Total	
	Num	%	Num	%	Num	%	Num	%	Num	%	Num	%
Electricity	6 414	94.4%	78	96.3%	6	100.0%	15	100.0%	510	99.4%	7 023	94.8%
Gas	36	0.5%	0	0.0%	0	0.0%	0	0.0%	0	0.0%	36	0.5%
Paraffin	297	4.4%	3	3.7%	0	0.0%	0	0.0%	0	0.0%	300	4.1%
Wood	6	0.1%	0	0.0%	0	0.0%	0	0.0%	0	0.0%	6	0.1%
Coal	3	0.0%	0	0.0%	0	0.0%	0	0.0%	0	0.0%	3	0.0%
Animal dung	0	0.0%	0	0.0%	0	0.0%	0	0.0%	0	0.0%	0	0.0%
Solar	9	0.1%	0	0.0%	0	0.0%	0	0.0%	0	0.0%	9	0.1%
Other	3	0.0%	0	0.0%	0	0.0%	0	0.0%	0	0.0%	3	0.0%
None	24	0.4%	0	0.0%	0	0.0%	0	0.0%	3	0.6%	27	0.4%
Total	6 792	100.0%	81	100.0%	6	100.0%	15	100.0%	513	100.0%	7 407	100.0%

Masiphumelele Energy used for Heating	Black African		Coloured		Asian		White		Other		Total	
	Num	%	Num	%	Num	%	Num	%	Num	%	Num	%
Electricity	3 492	51.4%	42	53.8%	3	100.0%	9	60.0%	246	48.0%	3 792	51.2%
Gas	135	2.0%	0	0.0%	0	0.0%	0	0.0%	3	0.6%	138	1.9%
Paraffin	924	13.6%	9	11.5%	0	0.0%	0	0.0%	78	15.2%	1 011	13.6%
Wood	6	0.1%	12	15.4%	0	0.0%	0	0.0%	0	0.0%	18	0.2%
Coal	3	0.0%	0	0.0%	0	0.0%	0	0.0%	3	0.6%	6	0.1%
Animal dung	6	0.1%	0	0.0%	0	0.0%	0	0.0%	0	0.0%	6	0.1%
Solar	6	0.1%	0	0.0%	0	0.0%	0	0.0%	0	0.0%	6	0.1%
Other	0	0.0%	0	0.0%	0	0.0%	0	0.0%	0	0.0%	0	0.0%
None	2 226	32.7%	15	19.2%	0	0.0%	6	40.0%	183	35.7%	2 430	32.8%
Total	6 798	100.0%	78	100.0%	3	100.0%	15	100.0%	513	100.0%	7 407	100.0%

[Go to top of document](#)