

# City of Cape Town – 2011 Census Suburb Nyanga

July 2013

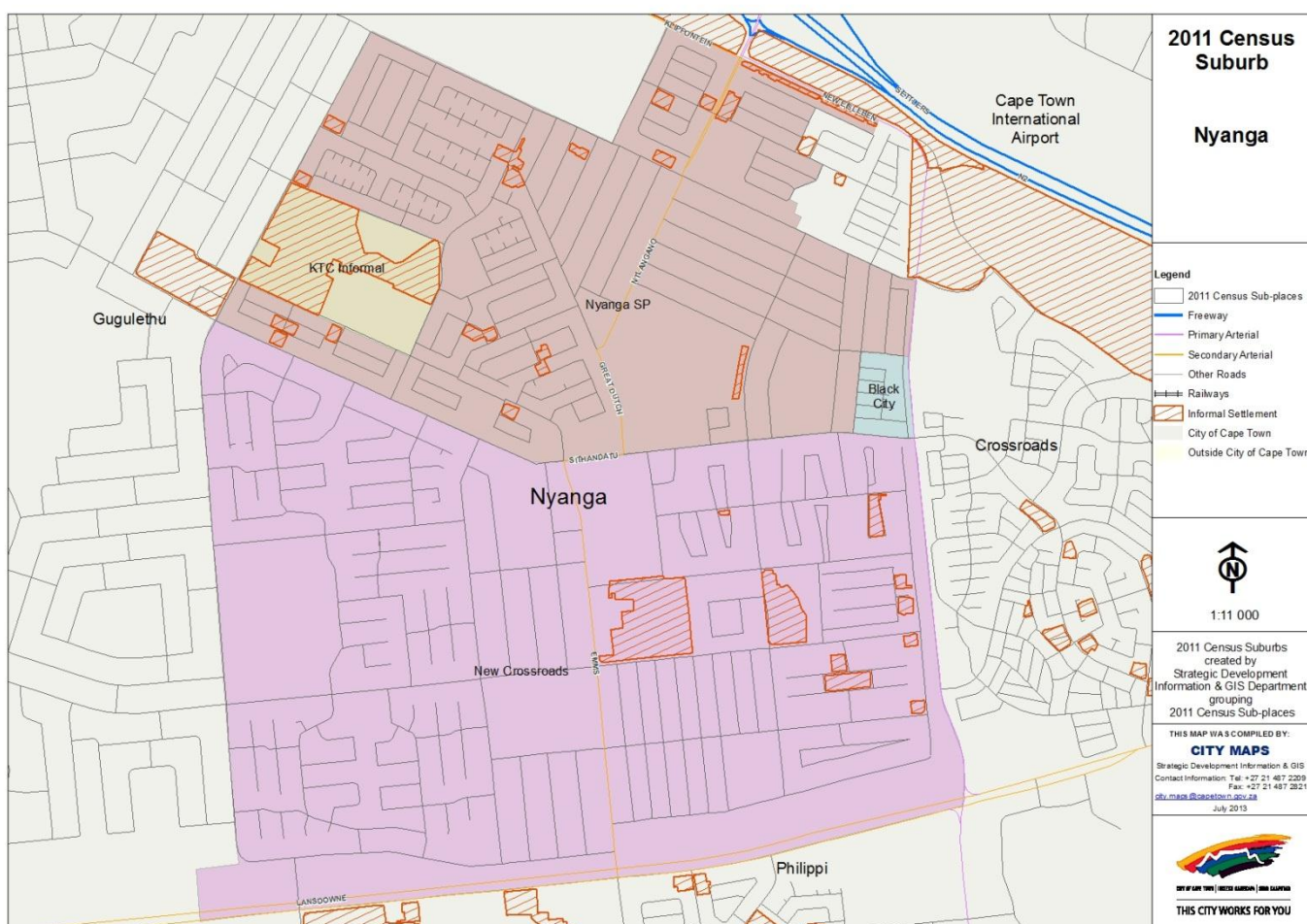
Compiled by Strategic Development Information and GIS Department (SDI&GIS), City of Cape Town  
2011 Census data supplied by Statistics South Africa  
(Based on information available at the time of compilation as released by Statistics South Africa)

The 2011 Census suburbs (190) have been created by SDI&GIS grouping the 2011 Census sub-places using GIS and December 2011 aerial photography. A sub-place is defined by Statistics South Africa “is the second (lowest) level of the place name category, namely a suburb, section or zone of an (apartheid) township, smallholdings, village, sub-village, ward or informal settlement.”

[Suburb Overview](#), [Demographic Profile](#), [Economic Profile](#), [Dwelling Profile](#), [Household Services Profile](#)

## 2011 Census Suburb Description

2011 Census suburb Nyanga includes the following sub-places: Black City, KTC Informal, New Crossroads, Nyanga SP.



**Data Notes:**

- The following databases from Statistics South Africa (SSA) software were used to extract the data for the profiles:  
Demographic Profile – Descriptive and Education databases  
Economic Profile – Labour Force and Head of Household databases  
Dwelling Profile – Dwellings database  
Household Services Profile – Household Services database
- In some Census suburbs there may be no data for households, or a very low number, as the Census suburb has population mainly living in collective living quarters (e.g. hotels, hostels, students’ residences, hospitals, prisons and other institutions) or is an industrial or commercial area. In these instances the number of households is not applicable. All tables have the data included, even if at times they are “0”, for completeness. The tables relating to population, age and labour force indicators would include the population living in these collective living quarters.
- The Census suburbs where the population is categorised as living mainly in collective living quarters or is an industrial or commercial area, the average household size has been excluded as it is not applicable. There are some Census suburbs with an average household size that have a small percentage of the population living in collective living quarters within that Census suburb, and this could artificially inflate the average household size.

**2011 Census Suburb Overview**

<b>2011 Census Suburb Nyanga</b>	<b>2011</b>
Population	57 996
Households	15 993
Average Household Size	3.63

In 2011 the population of 2011 Census suburb Nyanga was 57 996 and the number of households was 15 993. The average household size was 3.63.

A household is defined as a group of persons who live together, and provide themselves jointly with food or other essentials for living, or a single person who lives alone (Statistics South Africa).

The population and household numbers above are to be used and quoted as the official numbers for this 2011 Census suburb for 2011.

**Key results for 2011 Census Suburb Nyanga:**

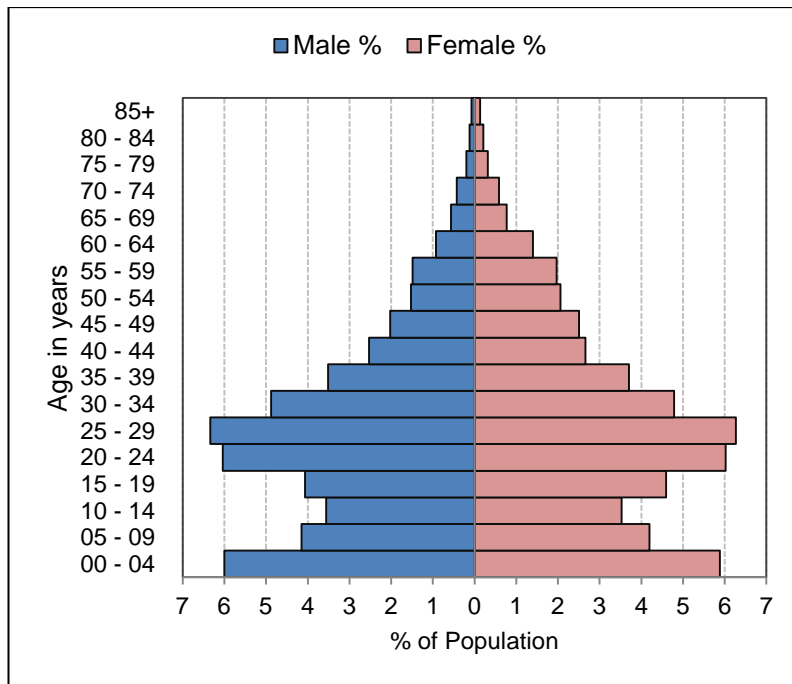
- The population is predominantly Black African (99%).
- 31% of those aged 20 years and older have completed Grade 12 or higher.
- 55% of the labour force (aged 15 to 64) is employed.
- 74% of households have a monthly income of R3 200 or less.
- 67% of households live in formal dwellings.
- 79% of households have access to piped water in their dwelling or inside their yard.
- 81% of households have access to a flush toilet connected to the public sewer system.
- 92% of households have their refuse removed at least once a week.
- 95% of households use electricity for lighting in their dwelling.

**Note:** There are small variations in the total population and the number of households in the tables which follow. These occur as Statistics South Africa had to calculate the true population to correct omissions and double counts in the enumeration process. In addition when the data is extracted using the Statistics South Africa software, it randomly rounds off all cells to a base number 3, including the totals. These variations are not significant.

[Go to top of document](#)

## Demographic Profile – 2011 Census

Nyanga Population	Male		Female		Total	
	Num	%	Num	%	Num	%
Black African	27 680	47.7%	29 615	51.1%	57 295	98.8%
Coloured	54	0.1%	109	0.2%	163	0.3%
Asian	21	0.0%	11	0.0%	32	0.1%
White	49	0.1%	65	0.1%	114	0.2%
Other	287	0.5%	106	0.2%	393	0.7%
Total	28 091	48.4%	29 906	51.6%	57 997	100.0%



Nyanga Age	Black African		Coloured		Asian		White		Other		Total	
	Num	%	Num	%	Num	%	Num	%	Num	%	Num	%
0 to 4 years	6 826	11.9%	18	11.1%	4	12.9%	11	9.7%	31	7.8%	6 890	11.9%
5 to 14 years	8 891	15.5%	21	13.0%	1	3.2%	19	16.8%	18	4.6%	8 950	15.4%
15 to 24 years	11 850	20.7%	21	13.0%	11	35.5%	19	16.8%	113	28.6%	12 014	20.7%
25 to 64 years	27 773	48.5%	97	59.9%	14	45.2%	54	47.8%	229	58.0%	28 167	48.6%
65 years and older	1 954	3.4%	5	3.1%	1	3.2%	10	8.8%	4	1.0%	1 974	3.4%
Total	57 294	100.0%	162	100.0%	31	100.0%	113	100.0%	395	100.0%	57 995	100.0%

Nyanga Adult Education (for all aged 20+)	Black African		Coloured		Asian		White		Other		Total	
	Num	%	Num	%	Num	%	Num	%	Num	%	Num	%
No schooling	1 020	2.8%	6	6.1%	9	33.3%	3	3.8%	57	17.4%	1 095	3.0%
Some primary	4 239	11.6%	18	18.2%	0	0.0%	3	3.8%	24	7.3%	4 284	11.6%
Completed primary	1 935	5.3%	6	6.1%	0	0.0%	3	3.8%	6	1.8%	1 950	5.3%
Some secondary	17 931	49.1%	51	51.5%	15	55.6%	30	38.5%	129	39.4%	18 156	49.0%
Grade 12	9 210	25.2%	18	18.2%	3	11.1%	21	26.9%	99	30.3%	9 351	25.3%
Higher	2 103	5.8%	0	0.0%	0	0.0%	18	23.1%	9	2.8%	2 130	5.8%
Other	51	0.1%	0	0.0%	0	0.0%	0	0.0%	3	0.9%	54	0.1%
Total	36 489	100.0%	99	100.0%	27	100.0%	78	100.0%	327	100.0%	37 020	100.0%

[Go to top of document](#)

## Economic Profile – 2011 Census

Nyanga Labour Force Indicators	Black African	Coloured	Asian	White	Other	Total
<b>Population aged 15 to 64 years</b>	<b>39 627</b>	<b>123</b>	<b>27</b>	<b>78</b>	<b>339</b>	<b>40 194</b>
<b>Labour Force</b>	<b>24 459</b>	<b>78</b>	<b>18</b>	<b>54</b>	<b>279</b>	<b>24 888</b>
Employed	13 323	30	18	42	237	13 650
Unemployed	11 136	48	0	12	42	11 238
<b>Not Economically Active</b>	<b>15 168</b>	<b>45</b>	<b>9</b>	<b>24</b>	<b>60</b>	<b>15 306</b>
Discouraged Work-seekers	2 676	6	3	6	6	2 697
Other not economically active	12 492	39	6	18	54	12 609
<b>Rates %</b>						
Unemployment rate	45.53%	61.54%	0.00%	22.22%	15.05%	45.15%
Labour absorption rate	33.62%	24.39%	66.67%	53.85%	69.91%	33.96%
Labour Force participation rate	61.72%	63.41%	66.67%	69.23%	82.30%	61.92%

### Definitions:

**Unemployment rate** is the proportion of the labour force that is unemployed.

The **labour absorption rate** is the proportion of working age (15 to 64 years) population that is employed.

The **labour force participation rate** is the proportion of the working age population that is either employed or unemployed.

**Note:** Based on available data as supplied by Statistics South Africa, the people categorised as living in collective living quarters are included in the "Other not economically active" category.

Nyanga Monthly Household Income	Black African		Coloured		Asian		White		Other		Total	
	Num	%	Num	%	Num	%	Num	%	Num	%	Num	%
No income	2 811	17.8%	12	28.6%	0	0.0%	0	0.0%	33	22.4%	2 856	17.9%
R 1 - R 1 600	5 064	32.1%	15	35.7%	3	33.3%	3	11.1%	30	20.4%	5 115	32.0%
R 1 601 - R 3 200	3 870	24.5%	6	14.3%	0	0.0%	3	11.1%	39	26.5%	3 918	24.5%
R 3 201 - R 6 400	2 538	16.1%	6	14.3%	3	33.3%	3	11.1%	27	18.4%	2 577	16.1%
R 6 401 - R 12 800	1 011	6.4%	3	7.1%	3	33.3%	6	22.2%	12	8.2%	1 035	6.5%
R 12 801 - R 25 600	339	2.1%	0	0.0%	0	0.0%	6	22.2%	3	2.0%	348	2.2%
R 25 601 - R 51 200	114	0.7%	0	0.0%	0	0.0%	3	11.1%	3	2.0%	120	0.8%
R 51 201 - R 102 400	9	0.1%	0	0.0%	0	0.0%	3	11.1%	0	0.0%	12	0.1%
R 102 401 or more	12	0.1%	0	0.0%	0	0.0%	0	0.0%	0	0.0%	12	0.1%
Unspecified	0	0.0%	0	0.0%	0	0.0%	0	0.0%	0	0.0%	0	0.0%
<b>Total</b>	<b>15 768</b>	<b>100.0%</b>	<b>42</b>	<b>100.0%</b>	<b>9</b>	<b>100.0%</b>	<b>27</b>	<b>100.0%</b>	<b>147</b>	<b>100.0%</b>	<b>15 993</b>	<b>100.0%</b>

[Go to top of document](#)

## Dwelling Profile – 2011 Census

Nyanga Type of Dwelling	Black African		Coloured		Asian		White		Other		Total	
	Num	%	Num	%	Num	%	Num	%	Num	%	Num	%
Formal Dwelling	10 639	67.5%	30	68.2%	8	88.9%	27	96.4%	64	44.8%	10 768	67.3%
Informal dwelling / shack in backyard	1 905	12.1%	10	22.7%	1	11.1%	1	3.6%	64	44.8%	1 981	12.4%
Informal dwelling / shack NOT in backyard	3 068	19.5%	4	9.1%	0	0.0%	0	0.0%	10	7.0%	3 082	19.3%
Other	157	1.0%	0	0.0%	0	0.0%	0	0.0%	5	3.5%	162	1.0%
<b>Total</b>	<b>15 769</b>	<b>100.0%</b>	<b>44</b>	<b>100.0%</b>	<b>9</b>	<b>100.0%</b>	<b>28</b>	<b>100.0%</b>	<b>143</b>	<b>100.0%</b>	<b>15 993</b>	<b>100.0%</b>

Nyanga Tenure Status	Black African		Coloured		Asian		White		Other		Total	
	Num	%	Num	%	Num	%	Num	%	Num	%	Num	%
Owned and fully paid off	5 340	33.9%	10	23.3%	1	11.1%	9	32.1%	8	5.6%	5 368	33.6%
Owned but not yet paid off	331	2.1%	0	0.0%	0	0.0%	9	32.1%	0	0.0%	340	2.1%
Rented	4 393	27.9%	23	53.5%	8	88.9%	9	32.1%	126	88.7%	4 559	28.5%
Occupied rent-free	4 111	26.1%	7	16.3%	0	0.0%	1	3.6%	7	4.9%	4 126	25.8%
Other	1 596	10.1%	3	7.0%	0	0.0%	0	0.0%	1	0.7%	1 600	10.0%
<b>Total</b>	<b>15 771</b>	<b>100.0%</b>	<b>43</b>	<b>100.0%</b>	<b>9</b>	<b>100.0%</b>	<b>28</b>	<b>100.0%</b>	<b>142</b>	<b>100.0%</b>	<b>15 993</b>	<b>100.0%</b>

[Go to top of document](#)

## Household Services Profile – 2011 Census

Nyanga Access to Piped Water	Black African		Coloured		Asian		White		Other		Total	
	Num	%	Num	%	Num	%	Num	%	Num	%	Num	%
Piped water inside dwelling	8 460	53.7%	15	35.7%	3	33.3%	24	88.9%	48	34.0%	8 550	53.5%
Piped water inside yard	3 993	25.3%	21	50.0%	3	33.3%	3	11.1%	84	59.6%	4 104	25.7%
Piped water outside yard: < 200m	2 421	15.4%	3	7.1%	3	33.3%	0	0.0%	6	4.3%	2 433	15.2%
Piped water outside yard: > 200m	783	5.0%	0	0.0%	0	0.0%	0	0.0%	0	0.0%	783	4.9%
No access to piped water	108	0.7%	3	7.1%	0	0.0%	0	0.0%	3	2.1%	114	0.7%
<b>Total</b>	<b>15 765</b>	<b>100.0%</b>	<b>42</b>	<b>100.0%</b>	<b>9</b>	<b>100.0%</b>	<b>27</b>	<b>100.0%</b>	<b>141</b>	<b>100.0%</b>	<b>15 984</b>	<b>100.0%</b>

Nyanga Toilet Facility	Black African		Coloured		Asian		White		Other		Total	
	Num	%	Num	%	Num	%	Num	%	Num	%	Num	%
Flush toilet (connected to sewerage system)	12 735	80.8%	33	78.6%	9	100.0%	27	100.0%	117	81.3%	12 921	80.8%
Flush toilet (with septic tank)	696	4.4%	3	7.1%	0	0.0%	0	0.0%	21	14.6%	720	4.5%
Chemical toilet	75	0.5%	0	0.0%	0	0.0%	0	0.0%	0	0.0%	75	0.5%
Pit toilet with ventilation (VIP)	21	0.1%	0	0.0%	0	0.0%	0	0.0%	0	0.0%	21	0.1%
Pit toilet without ventilation	36	0.2%	0	0.0%	0	0.0%	0	0.0%	3	2.1%	39	0.2%
Bucket toilet	1 710	10.8%	3	7.1%	0	0.0%	0	0.0%	0	0.0%	1 713	10.7%
Other	99	0.6%	3	7.1%	0	0.0%	0	0.0%	0	0.0%	102	0.6%
None	396	2.5%	0	0.0%	0	0.0%	0	0.0%	3	2.1%	399	2.5%
<b>Total</b>	<b>15 768</b>	<b>100.0%</b>	<b>42</b>	<b>100.0%</b>	<b>9</b>	<b>100.0%</b>	<b>27</b>	<b>100.0%</b>	<b>144</b>	<b>100.0%</b>	<b>15 990</b>	<b>100.0%</b>

Nyanga Refuse Disposal	Black African		Coloured		Asian		White		Other		Total	
	Num	%	Num	%	Num	%	Num	%	Num	%	Num	%
Removed by local authority/private company at least once a week	14 505	92.0%	39	92.9%	9	100.0%	27	90.0%	141	100.0%	14 721	92.0%
Removed by local authority/private company less often	57	0.4%	0	0.0%	0	0.0%	0	0.0%	0	0.0%	57	0.4%
Communal refuse dump	537	3.4%	3	7.1%	0	0.0%	3	10.0%	0	0.0%	543	3.4%
Own refuse dump	483	3.1%	0	0.0%	0	0.0%	0	0.0%	0	0.0%	483	3.0%
No rubbish disposal	132	0.8%	0	0.0%	0	0.0%	0	0.0%	0	0.0%	132	0.8%
Other	57	0.4%	0	0.0%	0	0.0%	0	0.0%	0	0.0%	57	0.4%
<b>Total</b>	<b>15 771</b>	<b>100.0%</b>	<b>42</b>	<b>100.0%</b>	<b>9</b>	<b>100.0%</b>	<b>30</b>	<b>100.0%</b>	<b>141</b>	<b>100.0%</b>	<b>15 993</b>	<b>100.0%</b>

[Go to top of document](#)

## Household Services Profile continued – 2011 Census

Nyanga Energy used for Lighting	Black African		Coloured		Asian		White		Other		Total	
	Num	%	Num	%	Num	%	Num	%	Num	%	Num	%
Electricity	15 036	95.3%	42	100.0%	9	100.0%	21	77.8%	141	100.0%	15 249	95.4%
Gas	36	0.2%	0	0.0%	0	0.0%	6	22.2%	0	0.0%	42	0.3%
Paraffin	315	2.0%	0	0.0%	0	0.0%	0	0.0%	0	0.0%	315	2.0%
Candles	285	1.8%	0	0.0%	0	0.0%	0	0.0%	0	0.0%	285	1.8%
Solar	9	0.1%	0	0.0%	0	0.0%	0	0.0%	0	0.0%	9	0.1%
None	90	0.6%	0	0.0%	0	0.0%	0	0.0%	0	0.0%	90	0.6%
<b>Total</b>	<b>15 771</b>	<b>100.0%</b>	<b>42</b>	<b>100.0%</b>	<b>9</b>	<b>100.0%</b>	<b>27</b>	<b>100.0%</b>	<b>141</b>	<b>100.0%</b>	<b>15 990</b>	<b>100.0%</b>

Nyanga Energy used for Cooking	Black African		Coloured		Asian		White		Other		Total	
	Num	%	Num	%	Num	%	Num	%	Num	%	Num	%
Electricity	14 505	92.0%	36	85.7%	9	100.0%	27	90.0%	144	100.0%	14 721	92.0%
Gas	390	2.5%	6	14.3%	0	0.0%	3	10.0%	0	0.0%	399	2.5%
Paraffin	774	4.9%	0	0.0%	0	0.0%	0	0.0%	0	0.0%	774	4.8%
Wood	15	0.1%	0	0.0%	0	0.0%	0	0.0%	0	0.0%	15	0.1%
Coal	3	0.0%	0	0.0%	0	0.0%	0	0.0%	0	0.0%	3	0.0%
Animal dung	9	0.1%	0	0.0%	0	0.0%	0	0.0%	0	0.0%	9	0.1%
Solar	18	0.1%	0	0.0%	0	0.0%	0	0.0%	0	0.0%	18	0.1%
Other	12	0.1%	0	0.0%	0	0.0%	0	0.0%	0	0.0%	12	0.1%
None	48	0.3%	0	0.0%	0	0.0%	0	0.0%	0	0.0%	48	0.3%
<b>Total</b>	<b>15 774</b>	<b>100.0%</b>	<b>42</b>	<b>100.0%</b>	<b>9</b>	<b>100.0%</b>	<b>30</b>	<b>100.0%</b>	<b>144</b>	<b>100.0%</b>	<b>15 999</b>	<b>100.0%</b>

Nyanga Energy used for Heating	Black African		Coloured		Asian		White		Other		Total	
	Num	%	Num	%	Num	%	Num	%	Num	%	Num	%
Electricity	4 641	29.4%	12	26.7%	3	50.0%	12	50.0%	30	20.8%	4 698	29.4%
Gas	222	1.4%	3	6.7%	0	0.0%	0	0.0%	0	0.0%	225	1.4%
Paraffin	7 266	46.1%	15	33.3%	3	50.0%	3	12.5%	36	25.0%	7 323	45.8%
Wood	18	0.1%	0	0.0%	0	0.0%	0	0.0%	0	0.0%	18	0.1%
Coal	33	0.2%	0	0.0%	0	0.0%	0	0.0%	0	0.0%	33	0.2%
Animal dung	9	0.1%	0	0.0%	0	0.0%	0	0.0%	0	0.0%	9	0.1%
Solar	6	0.0%	0	0.0%	0	0.0%	0	0.0%	0	0.0%	6	0.0%
Other	3	0.0%	0	0.0%	0	0.0%	0	0.0%	0	0.0%	3	0.0%
None	3 567	22.6%	15	33.3%	0	0.0%	9	37.5%	78	54.2%	3 669	23.0%
<b>Total</b>	<b>15 765</b>	<b>100.0%</b>	<b>45</b>	<b>100.0%</b>	<b>6</b>	<b>100.0%</b>	<b>24</b>	<b>100.0%</b>	<b>144</b>	<b>100.0%</b>	<b>15 984</b>	<b>100.0%</b>

[Go to top of document](#)