

# City of Cape Town – 2011 Census Suburb Philippi Small Holdings

July 2013

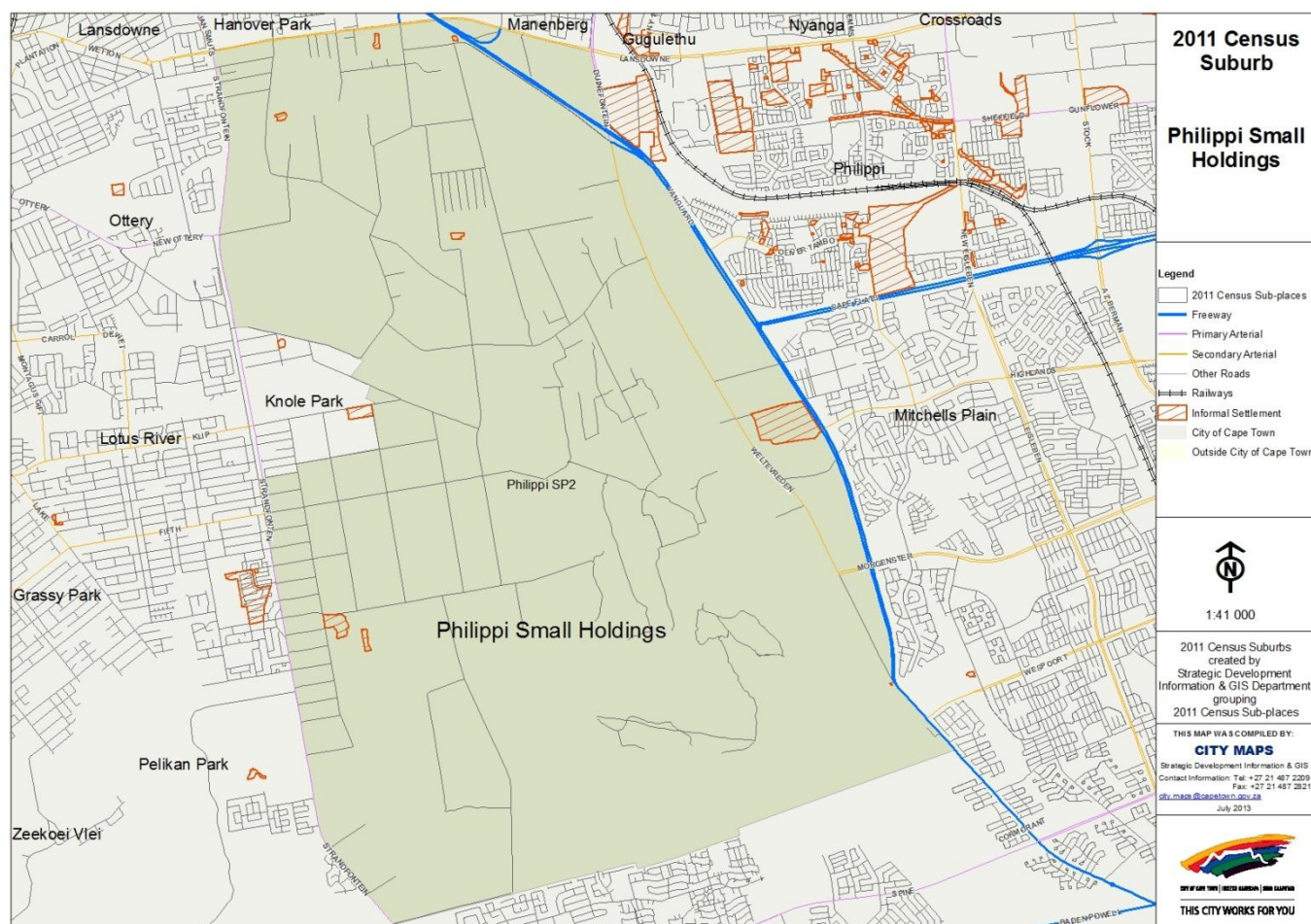
Compiled by Strategic Development Information and GIS Department (SDI&GIS), City of Cape Town  
2011 Census data supplied by Statistics South Africa  
(Based on information available at the time of compilation as released by Statistics South Africa)

The 2011 Census suburbs (190) have been created by SDI&GIS grouping the 2011 Census sub-places using GIS and December 2011 aerial photography. A sub-place is defined by Statistics South Africa “is the second (lowest) level of the place name category, namely a suburb, section or zone of an (apartheid) township, smallholdings, village, sub-village, ward or informal settlement.”

[Suburb Overview](#), [Demographic Profile](#), [Economic Profile](#), [Dwelling Profile](#), [Household Services Profile](#)

## 2011 Census Suburb Description

2011 Census suburb Philippi Small Holdings includes the following sub-places: Philippi SP2.



**Data Notes:**

- The following databases from Statistics South Africa (SSA) software were used to extract the data for the profiles:  
Demographic Profile – Descriptive and Education databases  
Economic Profile – Labour Force and Head of Household databases  
Dwelling Profile – Dwellings database  
Household Services Profile – Household Services database
- In some Census suburbs there may be no data for households, or a very low number, as the Census suburb has population mainly living in collective living quarters (e.g. hotels, hostels, students' residences, hospitals, prisons and other institutions) or is an industrial or commercial area. In these instances the number of households is not applicable. All tables have the data included, even if at times they are "0", for completeness. The tables relating to population, age and labour force indicators would include the population living in these collective living quarters.
- The Census suburbs where the population is categorised as living mainly in collective living quarters or is an industrial or commercial area, the average household size has been excluded as it is not applicable. There are some Census suburbs with an average household size that have a small percentage of the population living in collective living quarters within that Census suburb, and this could artificially inflate the average household size.

**2011 Census Suburb Overview**

<b>2011 Census Suburb Philippi Small Holdings</b>	<b>2011</b>
Population	6 618
Households	1 791
Average Household Size	3.70

In 2011 the population of 2011 Census suburb Philippi Small Holdings was 6 618 and the number of households was 1 791. The average household size was 3.70.

A household is defined as a group of persons who live together, and provide themselves jointly with food or other essentials for living, or a single person who lives alone (Statistics South Africa).

The population and household numbers above are to be used and quoted as the official numbers for this 2011 Census suburb for 2011.

**Key results for 2011 Census Suburb Philippi Small Holdings:**

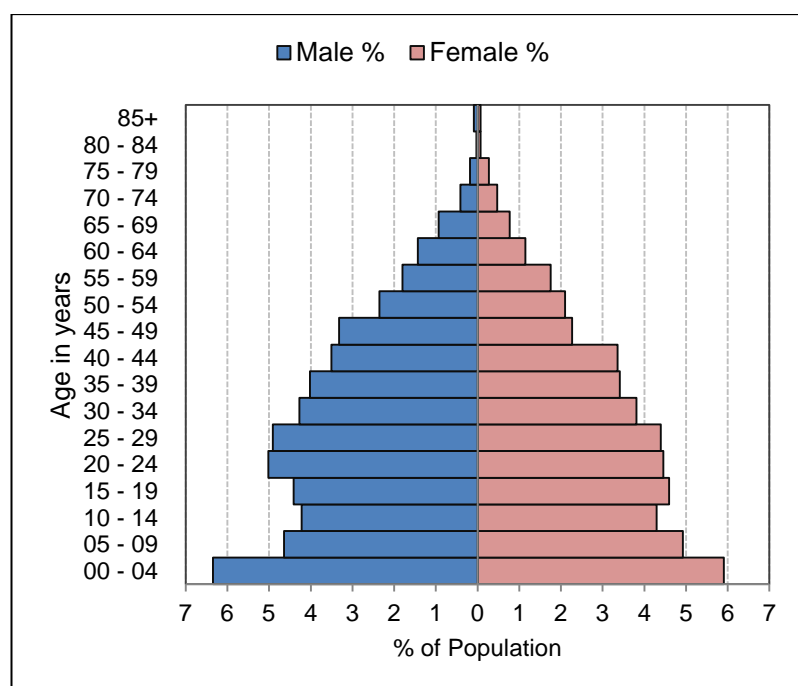
- The population is predominantly Coloured (71%).
- 29% of those aged 20 years and older have completed Grade 12 or higher.
- 81% of the labour force (aged 15 to 64) is employed.
- 59% of households have a monthly income of R3 200 or less.
- 67% of households live in formal dwellings.
- 68% of households have access to piped water in their dwelling or inside their yard.
- 22% of households have access to a flush toilet connected to the public sewer system.
- 64% of households have their refuse removed at least once a week.
- 67% of households use electricity for lighting in their dwelling.

**Note:** There are small variations in the total population and the number of households in the tables which follow. These occur as Statistics South Africa had to calculate the true population to correct omissions and double counts in the enumeration process. In addition when the data is extracted using the Statistics South Africa software, it randomly rounds off all cells to a base number 3, including the totals. These variations are not significant.

[Go to top of document](#)

## Demographic Profile – 2011 Census

Philippi Small Holdings Population	Male		Female		Total	
	Num	%	Num	%	Num	%
Black African	626	9.5%	434	6.6%	1 060	16.0%
Coloured	2 360	35.7%	2 305	34.8%	4 665	70.5%
Asian	105	1.6%	117	1.8%	222	3.4%
White	233	3.5%	199	3.0%	432	6.5%
Other	110	1.7%	127	1.9%	237	3.6%
Total	3 434	51.9%	3 182	48.1%	6 616	100.0%



Philippi Small Holdings Age	Black African		Coloured		Asian		White		Other		Total	
	Num	%	Num	%	Num	%	Num	%	Num	%	Num	%
0 to 4 years	125	11.8%	618	13.2%	20	9.0%	29	6.7%	18	7.6%	810	12.2%
5 to 14 years	159	15.0%	913	19.6%	40	17.9%	34	7.9%	50	21.0%	1 196	18.1%
15 to 24 years	229	21.6%	849	18.2%	43	19.3%	54	12.5%	48	20.2%	1 223	18.5%
25 to 64 years	537	50.7%	2 155	46.2%	106	47.5%	261	60.4%	111	46.6%	3 170	47.9%
65 years and older	10	0.9%	131	2.8%	14	6.3%	54	12.5%	11	4.6%	220	3.3%
Total	1 060	100.0%	4 666	100.0%	223	100.0%	432	100.0%	238	100.0%	6 619	100.0%

Philippi Small Holdings Adult Education (for all aged 20+)	Black African		Coloured		Asian		White		Other		Total	
	Num	%	Num	%	Num	%	Num	%	Num	%	Num	%
No schooling	33	4.9%	168	6.4%	0	0.0%	6	1.8%	6	3.7%	213	5.4%
Some primary	111	16.6%	522	19.9%	18	14.0%	6	1.8%	9	5.6%	666	17.0%
Completed primary	45	6.7%	249	9.5%	6	4.7%	3	0.9%	6	3.7%	309	7.9%
Some secondary	318	47.5%	1 041	39.7%	42	32.6%	123	36.9%	72	44.4%	1 596	40.7%
Grade 12	129	19.3%	522	19.9%	48	37.2%	144	43.2%	45	27.8%	888	22.7%
Higher	27	4.0%	114	4.3%	15	11.6%	48	14.4%	24	14.8%	228	5.8%
Other	6	0.9%	9	0.3%	0	0.0%	3	0.9%	0	0.0%	18	0.5%
Total	669	100.0%	2 625	100.0%	129	100.0%	333	100.0%	162	100.0%	3 918	100.0%

[Go to top of document](#)

## Economic Profile – 2011 Census

Philippi Small Holdings Labour Force Indicators	Black African	Coloured	Asian	White	Other	Total
<b>Population aged 15 to 64 years</b>	<b>762</b>	<b>3 003</b>	<b>150</b>	<b>315</b>	<b>162</b>	<b>4 392</b>
<b>Labour Force</b>	<b>528</b>	<b>1 875</b>	<b>81</b>	<b>228</b>	<b>99</b>	<b>2 811</b>
Employed	393	1 527	66	201	78	2 265
Unemployed	135	348	15	27	21	546
<b>Not Economically Active</b>	<b>234</b>	<b>1 128</b>	<b>69</b>	<b>87</b>	<b>63</b>	<b>1 581</b>
Discouraged Work-seekers	39	153	9	9	12	222
Other not economically active	195	975	60	78	51	1 359
<b>Rates %</b>						
Unemployment rate	25.57%	18.56%	18.52%	11.84%	21.21%	19.42%
Labour absorption rate	51.57%	50.85%	44.00%	63.81%	48.15%	51.57%
Labour Force participation rate	69.29%	62.44%	54.00%	72.38%	61.11%	64.00%

### Definitions:

**Unemployment rate** is the proportion of the labour force that is unemployed.

The **labour absorption rate** is the proportion of working age (15 to 64 years) population that is employed.

The **labour force participation rate** is the proportion of the working age population that is either employed or unemployed.

**Note:** Based on available data as supplied by Statistics South Africa, the people categorised as living in collective living quarters are included in the "Other not economically active" category.

Philippi Small Holdings Monthly Household Income	Black African		Coloured		Asian		White		Other		Total	
	Num	%	Num	%	Num	%	Num	%	Num	%	Num	%
No income	102	23.6%	120	10.9%	6	11.8%	18	10.9%	9	18.8%	255	14.2%
R 1 - R 1 600	138	31.9%	228	20.7%	6	11.8%	9	5.5%	12	25.0%	393	21.8%
R 1 601 - R 3 200	108	25.0%	273	24.7%	9	17.6%	12	7.3%	6	12.5%	408	22.7%
R 3 201 - R 6 400	57	13.2%	240	21.7%	9	17.6%	30	18.2%	9	18.8%	345	19.2%
R 6 401 - R 12 800	15	3.5%	132	12.0%	6	11.8%	27	16.4%	3	6.3%	183	10.2%
R 12 801 - R 25 600	6	1.4%	72	6.5%	6	11.8%	33	20.0%	6	12.5%	123	6.8%
R 25 601 - R 51 200	6	1.4%	36	3.3%	3	5.9%	24	14.5%	0	0.0%	69	3.8%
R 51 201 - R 102 400	0	0.0%	3	0.3%	3	5.9%	6	3.6%	0	0.0%	12	0.7%
R 102 401 or more	0	0.0%	0	0.0%	3	5.9%	6	3.6%	3	6.3%	12	0.7%
Unspecified	0	0.0%	0	0.0%	0	0.0%	0	0.0%	0	0.0%	0	0.0%
Total	432	100.0%	1 104	100.0%	51	100.0%	165	100.0%	48	100.0%	1 800	100.0%

[Go to top of document](#)

## Dwelling Profile – 2011 Census

Philippi Small Holdings Type of Dwelling	Black African		Coloured		Asian		White		Other		Total	
	Num	%	Num	%	Num	%	Num	%	Num	%	Num	%
Formal Dwelling	188	43.4%	770	70.0%	44	97.8%	160	97.0%	41	87.2%	1 203	67.2%
Informal dwelling / shack in backyard	14	3.2%	46	4.2%	1	2.2%	1	0.6%	3	6.4%	65	3.6%
Informal dwelling / shack NOT in backyard	215	49.7%	253	23.0%	0	0.0%	0	0.0%	3	6.4%	471	26.3%
Other	16	3.7%	31	2.8%	0	0.0%	4	2.4%	0	0.0%	51	2.8%
Total	433	100.0%	1 100	100.0%	45	100.0%	165	100.0%	47	100.0%	1 790	100.0%

Philippi Small Holdings Tenure Status	Black African		Coloured		Asian		White		Other		Total	
	Num	%	Num	%	Num	%	Num	%	Num	%	Num	%
Owned and fully paid off	65	15.0%	175	15.9%	4	8.9%	53	32.5%	4	8.5%	301	16.8%
Owned but not yet paid off	4	0.9%	89	8.1%	13	28.9%	15	9.2%	11	23.4%	132	7.4%
Rented	112	25.8%	267	24.2%	11	24.4%	56	34.4%	17	36.2%	463	25.9%
Occupied rent-free	206	47.5%	523	47.5%	17	37.8%	38	23.3%	15	31.9%	799	44.6%
Other	47	10.8%	48	4.4%	0	0.0%	1	0.6%	0	0.0%	96	5.4%
Total	434	100.0%	1 102	100.0%	45	100.0%	163	100.0%	47	100.0%	1 791	100.0%

[Go to top of document](#)

## Household Services Profile – 2011 Census

Philippi Small Holdings Access to Piped Water	Black African		Coloured		Asian		White		Other		Total	
	Num	%	Num	%	Num	%	Num	%	Num	%	Num	%
Piped water inside dwelling	93	21.4%	528	48.1%	33	68.8%	156	94.5%	36	80.0%	846	47.2%
Piped water inside yard	114	26.2%	237	21.6%	6	12.5%	6	3.6%	6	13.3%	369	20.6%
Piped water outside yard: < 200m	192	44.1%	195	17.8%	6	12.5%	0	0.0%	3	6.7%	396	22.1%
Piped water outside yard: > 200m	27	6.2%	75	6.8%	3	6.3%	0	0.0%	0	0.0%	105	5.9%
No access to piped water	9	2.1%	63	5.7%	0	0.0%	3	1.8%	0	0.0%	75	4.2%
<b>Total</b>	<b>435</b>	<b>100.0%</b>	<b>1 098</b>	<b>100.0%</b>	<b>48</b>	<b>100.0%</b>	<b>165</b>	<b>100.0%</b>	<b>45</b>	<b>100.0%</b>	<b>1 791</b>	<b>100.0%</b>

Philippi Small Holdings Toilet Facility	Black African		Coloured		Asian		White		Other		Total	
	Num	%	Num	%	Num	%	Num	%	Num	%	Num	%
Flush toilet (connected to sewerage system)	66	15.1%	234	21.3%	15	31.3%	66	40.7%	18	37.5%	399	22.2%
Flush toilet (with septic tank)	99	22.6%	324	29.5%	15	31.3%	96	59.3%	18	37.5%	552	30.8%
Chemical toilet	171	39.0%	123	11.2%	9	18.8%	0	0.0%	3	6.3%	306	17.1%
Pit toilet with ventilation (VIP)	3	0.7%	78	7.1%	3	6.3%	0	0.0%	0	0.0%	84	4.7%
Pit toilet without ventilation	12	2.7%	87	7.9%	0	0.0%	0	0.0%	3	6.3%	102	5.7%
Bucket toilet	57	13.0%	147	13.4%	3	6.3%	0	0.0%	3	6.3%	210	11.7%
Other	18	4.1%	45	4.1%	0	0.0%	0	0.0%	0	0.0%	63	3.5%
None	12	2.7%	60	5.5%	3	6.3%	0	0.0%	3	6.3%	78	4.3%
<b>Total</b>	<b>438</b>	<b>100.0%</b>	<b>1 098</b>	<b>100.0%</b>	<b>48</b>	<b>100.0%</b>	<b>162</b>	<b>100.0%</b>	<b>48</b>	<b>100.0%</b>	<b>1 794</b>	<b>100.0%</b>

Philippi Small Holdings Refuse Disposal	Black African		Coloured		Asian		White		Other		Total	
	Num	%	Num	%	Num	%	Num	%	Num	%	Num	%
Removed by local authority/private company at least once a week	231	52.7%	717	64.8%	39	92.9%	129	79.6%	36	80.0%	1 152	64.2%
Removed by local authority/private company less often	6	1.4%	12	1.1%	0	0.0%	0	0.0%	0	0.0%	18	1.0%
Communal refuse dump	141	32.2%	171	15.4%	3	7.1%	6	3.7%	3	6.7%	324	18.1%
Own refuse dump	33	7.5%	87	7.9%	0	0.0%	15	9.3%	3	6.7%	138	7.7%
No rubbish disposal	15	3.4%	81	7.3%	0	0.0%	9	5.6%	0	0.0%	105	5.9%
Other	12	2.7%	39	3.5%	0	0.0%	3	1.9%	3	6.7%	57	3.2%
<b>Total</b>	<b>438</b>	<b>100.0%</b>	<b>1 107</b>	<b>100.0%</b>	<b>42</b>	<b>100.0%</b>	<b>162</b>	<b>100.0%</b>	<b>45</b>	<b>100.0%</b>	<b>1 794</b>	<b>100.0%</b>

[Go to top of document](#)



## Household Services Profile continued – 2011 Census

Philippi Small Holdings Energy used for Lighting	Black African		Coloured		Asian		White		Other		Total	
	Num	%	Num	%	Num	%	Num	%	Num	%	Num	%
Electricity	222	51.0%	732	66.5%	39	81.3%	162	100.0%	42	87.5%	1 197	66.7%
Gas	6	1.4%	12	1.1%	0	0.0%	0	0.0%	0	0.0%	18	1.0%
Paraffin	27	6.2%	45	4.1%	3	6.3%	0	0.0%	0	0.0%	75	4.2%
Candles	174	40.0%	297	27.0%	6	12.5%	0	0.0%	6	12.5%	483	26.9%
Solar	0	0.0%	0	0.0%	0	0.0%	0	0.0%	0	0.0%	0	0.0%
None	6	1.4%	15	1.4%	0	0.0%	0	0.0%	0	0.0%	21	1.2%
Total	435	100.0%	1 101	100.0%	48	100.0%	162	100.0%	48	100.0%	1 794	100.0%

Philippi Small Holdings Energy used for Cooking	Black African		Coloured		Asian		White		Other		Total	
	Num	%	Num	%	Num	%	Num	%	Num	%	Num	%
Electricity	198	45.2%	573	52.2%	21	46.7%	138	83.6%	27	69.2%	957	53.6%
Gas	39	8.9%	249	22.7%	21	46.7%	24	14.5%	12	30.8%	345	19.3%
Paraffin	153	34.9%	102	9.3%	3	6.7%	0	0.0%	0	0.0%	258	14.5%
Wood	33	7.5%	153	13.9%	0	0.0%	0	0.0%	0	0.0%	186	10.4%
Coal	9	2.1%	9	0.8%	0	0.0%	0	0.0%	0	0.0%	18	1.0%
Animal dung	0	0.0%	0	0.0%	0	0.0%	0	0.0%	0	0.0%	0	0.0%
Solar	0	0.0%	0	0.0%	0	0.0%	0	0.0%	0	0.0%	0	0.0%
Other	0	0.0%	0	0.0%	0	0.0%	0	0.0%	0	0.0%	0	0.0%
None	6	1.4%	12	1.1%	0	0.0%	3	1.8%	0	0.0%	21	1.2%
Total	438	100.0%	1 098	100.0%	45	100.0%	165	100.0%	39	100.0%	1 785	100.0%

Philippi Small Holdings Energy used for Heating	Black African		Coloured		Asian		White		Other		Total	
	Num	%	Num	%	Num	%	Num	%	Num	%	Num	%
Electricity	135	31.7%	510	46.3%	24	61.5%	126	77.8%	24	53.3%	819	46.2%
Gas	9	2.1%	42	3.8%	3	7.7%	9	5.6%	0	0.0%	63	3.6%
Paraffin	72	16.9%	66	6.0%	0	0.0%	0	0.0%	0	0.0%	138	7.8%
Wood	66	15.5%	189	17.2%	0	0.0%	3	1.9%	6	13.3%	264	14.9%
Coal	12	2.8%	18	1.6%	0	0.0%	0	0.0%	0	0.0%	30	1.7%
Animal dung	0	0.0%	0	0.0%	0	0.0%	0	0.0%	0	0.0%	0	0.0%
Solar	0	0.0%	0	0.0%	0	0.0%	0	0.0%	0	0.0%	0	0.0%
Other	0	0.0%	0	0.0%	0	0.0%	0	0.0%	0	0.0%	0	0.0%
None	132	31.0%	276	25.1%	12	30.8%	24	14.8%	15	33.3%	459	25.9%
Total	426	100.0%	1 101	100.0%	39	100.0%	162	100.0%	45	100.0%	1 773	100.0%

[Go to top of document](#)