

City of Cape Town – 2011 Census Suburb Plumstead

July 2013

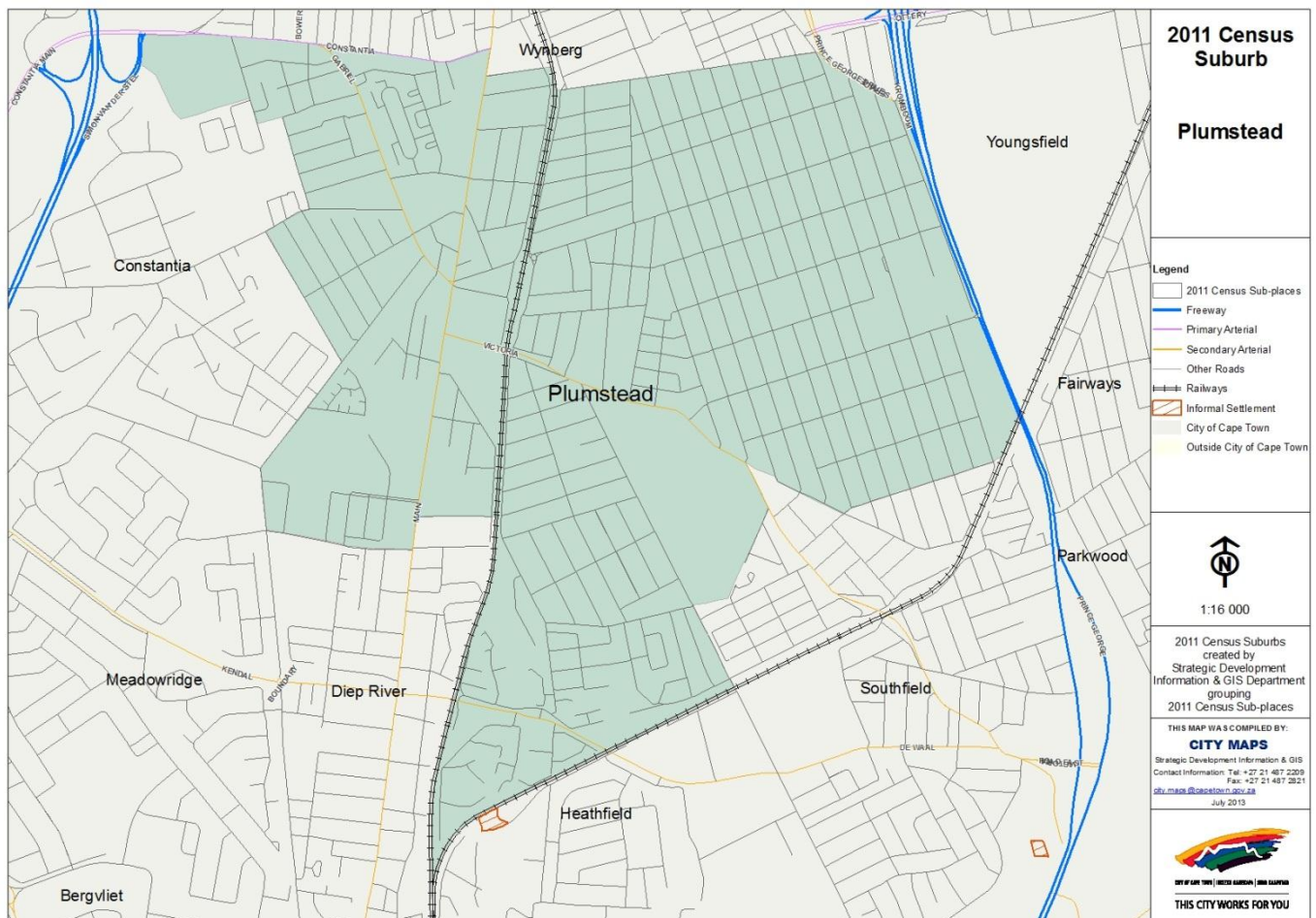
Compiled by Strategic Development Information and GIS Department (SDI&GIS), City of Cape Town
2011 Census data supplied by Statistics South Africa
(Based on information available at the time of compilation as released by Statistics South Africa)

The 2011 Census suburbs (190) have been created by SDI&GIS grouping the 2011 Census sub-places using GIS and December 2011 aerial photography. A sub-place is defined by Statistics South Africa “is the second (lowest) level of the place name category, namely a suburb, section or zone of an (apartheid) township, smallholdings, village, sub-village, ward or informal settlement.”

[Suburb Overview](#), [Demographic Profile](#), [Economic Profile](#), [Dwelling Profile](#), [Household Services Profile](#)

2011 Census Suburb Description

2011 Census suburb Plumstead includes the following sub-places: Plumstead.



Data Notes:

- The following databases from Statistics South Africa (SSA) software were used to extract the data for the profiles:
Demographic Profile – Descriptive and Education databases
Economic Profile – Labour Force and Head of Household databases
Dwelling Profile – Dwellings database
Household Services Profile – Household Services database
- In some Census suburbs there may be no data for households, or a very low number, as the Census suburb has population mainly living in collective living quarters (e.g. hotels, hostels, students' residences, hospitals, prisons and other institutions) or is an industrial or commercial area. In these instances the number of households is not applicable. All tables have the data included, even if at times they are "0", for completeness. The tables relating to population, age and labour force indicators would include the population living in these collective living quarters.
- The Census suburbs where the population is categorised as living mainly in collective living quarters or is an industrial or commercial area, the average household size has been excluded as it is not applicable. There are some Census suburbs with an average household size that have a small percentage of the population living in collective living quarters within that Census suburb, and this could artificially inflate the average household size.

2011 Census Suburb Overview

2011 Census Suburb Plumstead	2011
Population	20 178
Households	7 080
Average Household Size	2.85

In 2011 the population of 2011 Census suburb Plumstead was 20 178 and the number of households was 7 080. The average household size was 2.85.

A household is defined as a group of persons who live together, and provide themselves jointly with food or other essentials for living, or a single person who lives alone (Statistics South Africa).

The population and household numbers above are to be used and quoted as the official numbers for this 2011 Census suburb for 2011.

Key results for 2011 Census Suburb Plumstead:

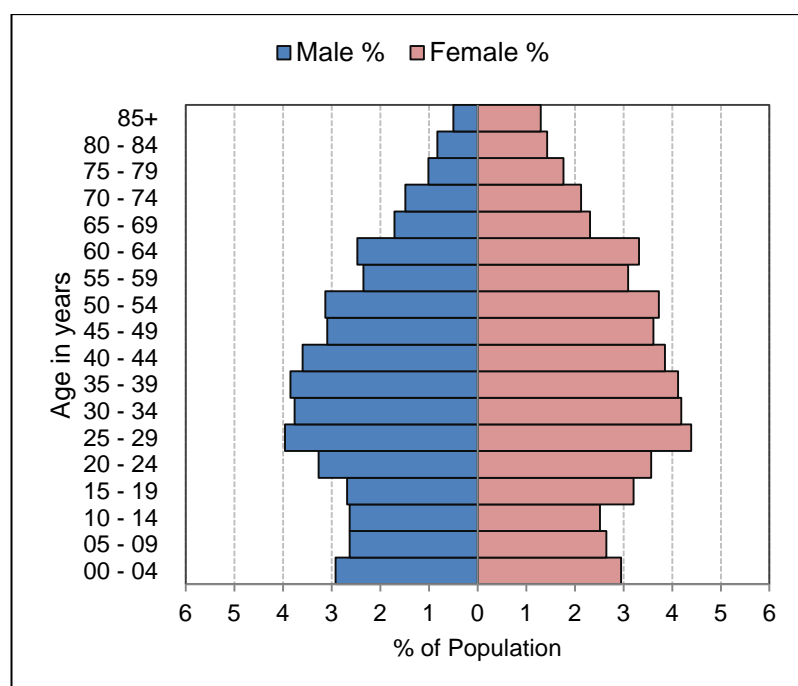
- The population is predominantly White (55%) and Coloured (29%).
- 75% of those aged 20 years and older have completed Grade 12 or higher.
- 94% of the labour force (aged 15 to 64) is employed.
- 18% of households have a monthly income of R3 200 or less.
- 99% of households live in formal dwellings.
- 99% of households have access to piped water in their dwelling or inside their yard.
- 99% of households have access to a flush toilet connected to the public sewer system.
- 99% of households have their refuse removed at least once a week.
- 99% of households use electricity for lighting in their dwelling.

Note: There are small variations in the total population and the number of households in the tables which follow. These occur as Statistics South Africa had to calculate the true population to correct omissions and double counts in the enumeration process. In addition when the data is extracted using the Statistics South Africa software, it randomly rounds off all cells to a base number 3, including the totals. These variations are not significant.

[Go to top of document](#)

Demographic Profile – 2011 Census

Plumstead Population	Male		Female		Total	
	Num	%	Num	%	Num	%
Black African	1 010	5.0%	1 080	5.4%	2 090	10.4%
Coloured	2 661	13.2%	3 160	15.7%	5 821	28.8%
Asian	254	1.3%	257	1.3%	511	2.5%
White	4 961	24.6%	6 035	29.9%	10 996	54.5%
Other	370	1.8%	390	1.9%	760	3.8%
Total	9 256	45.9%	10 922	54.1%	20 178	100.0%



Plumstead Age	Black African		Coloured		Asian		White		Other		Total	
	Num	%	Num	%	Num	%	Num	%	Num	%	Num	%
0 to 4 years	181	8.7%	442	7.6%	41	8.0%	452	4.1%	68	9.0%	1 184	5.9%
5 to 14 years	224	10.7%	849	14.6%	61	12.0%	868	7.9%	102	13.5%	2 104	10.4%
15 to 24 years	330	15.8%	831	14.3%	69	13.5%	1 213	11.0%	124	16.4%	2 567	12.7%
25 to 64 years	1 215	58.2%	3 280	56.4%	304	59.6%	6 194	56.3%	406	53.6%	11 399	56.5%
65 years and older	138	6.6%	418	7.2%	35	6.9%	2 268	20.6%	58	7.7%	2 917	14.5%
Total	2 088	100.0%	5 820	100.0%	510	100.0%	10 995	100.0%	758	100.0%	20 171	100.0%

Plumstead Adult Education (for all aged 20+)	Black African		Coloured		Asian		White		Other		Total	
	Num	%	Num	%	Num	%	Num	%	Num	%	Num	%
No schooling	6	0.4%	6	0.2%	0	0.0%	24	0.3%	3	0.6%	39	0.3%
Some primary	30	2.2%	141	3.5%	6	1.7%	120	1.4%	15	2.8%	312	2.1%
Completed primary	15	1.1%	75	1.9%	6	1.7%	69	0.8%	3	0.6%	168	1.1%
Some secondary	195	14.6%	885	22.2%	36	10.0%	1 845	21.2%	69	12.9%	3 030	20.3%
Grade 12	447	33.5%	1 413	35.5%	111	30.8%	3 249	37.3%	177	33.1%	5 397	36.2%
Higher	618	46.3%	1 443	36.2%	195	54.2%	3 309	38.0%	258	48.3%	5 823	39.0%
Other	24	1.8%	21	0.5%	6	1.7%	99	1.1%	9	1.7%	159	1.1%
Total	1 335	100.0%	3 984	100.0%	360	100.0%	8 715	100.0%	534	100.0%	14 928	100.0%

[Go to top of document](#)

Economic Profile – 2011 Census

Plumstead Labour Force Indicators	Black African	Coloured	Asian	White	Other	Total
Population aged 15 to 64 years	1 551	4 116	369	7 407	531	13 974
Labour Force	984	2 979	267	5 289	363	9 882
Employed	891	2 808	258	5 028	330	9 315
Unemployed	93	171	9	261	33	567
Not Economically Active	567	1 137	102	2 118	168	4 092
Discouraged Work-seekers	9	42	0	54	0	105
Other not economically active	558	1 095	102	2 064	168	3 987
Rates %						
Unemployment rate	9.45%	5.74%	3.37%	4.93%	9.09%	5.74%
Labour absorption rate	57.45%	68.22%	69.92%	67.88%	62.15%	66.66%
Labour Force participation rate	63.44%	72.38%	72.36%	71.41%	68.36%	70.72%

Definitions:

Unemployment rate is the proportion of the labour force that is unemployed.

The **labour absorption rate** is the proportion of working age (15 to 64 years) population that is employed.

The **labour force participation rate** is the proportion of the working age population that is either employed or unemployed.

Note: Based on available data as supplied by Statistics South Africa, the people categorised as living in collective living quarters are included in the "Other not economically active" category.

Plumstead Monthly Household Income	Black African		Coloured		Asian		White		Other		Total	
	Num	%	Num	%	Num	%	Num	%	Num	%	Num	%
No income	81	13.8%	108	6.3%	6	4.3%	324	7.3%	27	14.5%	546	7.7%
R 1 - R 1 600	30	5.1%	81	4.7%	0	0.0%	219	4.9%	15	8.1%	345	4.9%
R 1 601 - R 3 200	39	6.6%	84	4.9%	3	2.1%	228	5.1%	12	6.5%	366	5.2%
R 3 201 - R 6 400	48	8.2%	123	7.2%	3	2.1%	519	11.7%	18	9.7%	711	10.1%
R 6 401 - R 12 800	102	17.3%	267	15.6%	21	14.9%	837	18.9%	24	12.9%	1 251	17.7%
R 12 801 - R 25 600	150	25.5%	354	20.6%	36	25.5%	1 020	23.0%	30	16.1%	1 590	22.5%
R 25 601 - R 51 200	84	14.3%	426	24.8%	39	27.7%	873	19.7%	33	17.7%	1 455	20.6%
R 51 201 - R 102 400	42	7.1%	228	13.3%	27	19.1%	345	7.8%	21	11.3%	663	9.4%
R 102 401 or more	12	2.0%	45	2.6%	6	4.3%	75	1.7%	6	3.2%	144	2.0%
Unspecified	0	0.0%	0	0.0%	0	0.0%	0	0.0%	0	0.0%	0	0.0%
Total	588	100.0%	1 716	100.0%	141	100.0%	4 440	100.0%	186	100.0%	7 071	100.0%

[Go to top of document](#)

Dwelling Profile – 2011 Census

Plumstead Type of Dwelling	Black African		Coloured		Asian		White		Other		Total	
	Num	%	Num	%	Num	%	Num	%	Num	%	Num	%
Formal Dwelling	575	98.1%	1 700	99.0%	141	97.9%	4 388	98.7%	186	100.0%	6 990	98.7%
Informal dwelling / shack in backyard	1	0.2%	7	0.4%	0	0.0%	10	0.2%	0	0.0%	18	0.3%
Informal dwelling / shack NOT in backyard	1	0.2%	4	0.2%	0	0.0%	11	0.2%	0	0.0%	16	0.2%
Other	9	1.5%	6	0.3%	3	2.1%	37	0.8%	0	0.0%	55	0.8%
Total	586	100.0%	1 717	100.0%	144	100.0%	4 446	100.0%	186	100.0%	7 079	100.0%

Plumstead Tenure Status	Black African		Coloured		Asian		White		Other		Total	
	Num	%	Num	%	Num	%	Num	%	Num	%	Num	%
Owned and fully paid off	93	15.8%	245	14.3%	26	18.1%	1 795	40.4%	35	18.9%	2 194	31.0%
Owned but not yet paid off	137	23.3%	732	42.7%	73	50.7%	1 365	30.7%	53	28.6%	2 360	33.3%
Rented	337	57.4%	689	40.2%	43	29.9%	1 196	26.9%	90	48.6%	2 355	33.3%
Occupied rent-free	11	1.9%	20	1.2%	1	0.7%	41	0.9%	3	1.6%	76	1.1%
Other	9	1.5%	30	1.7%	1	0.7%	48	1.1%	4	2.2%	92	1.3%
Total	587	100.0%	1 716	100.0%	144	100.0%	4 445	100.0%	185	100.0%	7 077	100.0%

[Go to top of document](#)

Household Services Profile – 2011 Census

Plumstead Access to Piped Water	Black African		Coloured		Asian		White		Other		Total	
	Num	%	Num	%	Num	%	Num	%	Num	%	Num	%
Piped water inside dwelling	582	99.5%	1 695	98.8%	144	100.0%	4 419	99.2%	183	98.4%	7 023	99.1%
Piped water inside yard	0	0.0%	12	0.7%	0	0.0%	6	0.1%	0	0.0%	18	0.3%
Piped water outside yard: < 200m	0	0.0%	3	0.2%	0	0.0%	6	0.1%	0	0.0%	9	0.1%
Piped water outside yard: > 200m	0	0.0%	3	0.2%	0	0.0%	12	0.3%	0	0.0%	15	0.2%
No access to piped water	3	0.5%	3	0.2%	0	0.0%	12	0.3%	3	1.6%	21	0.3%
Total	585	100.0%	1 716	100.0%	144	100.0%	4 455	100.0%	186	100.0%	7 086	100.0%

Plumstead Toilet Facility	Black African		Coloured		Asian		White		Other		Total	
	Num	%	Num	%	Num	%	Num	%	Num	%	Num	%
Flush toilet (connected to sewerage system)	576	98.0%	1 701	99.3%	144	100.0%	4 407	99.2%	186	100.0%	7 014	99.2%
Flush toilet (with septic tank)	0	0.0%	6	0.4%	0	0.0%	12	0.3%	0	0.0%	18	0.3%
Chemical toilet	0	0.0%	0	0.0%	0	0.0%	6	0.1%	0	0.0%	6	0.1%
Pit toilet with ventilation (VIP)	0	0.0%	0	0.0%	0	0.0%	0	0.0%	0	0.0%	0	0.0%
Pit toilet without ventilation	0	0.0%	0	0.0%	0	0.0%	0	0.0%	0	0.0%	0	0.0%
Bucket toilet	3	0.5%	3	0.2%	0	0.0%	0	0.0%	0	0.0%	6	0.1%
Other	6	1.0%	3	0.2%	0	0.0%	3	0.1%	0	0.0%	12	0.2%
None	3	0.5%	0	0.0%	0	0.0%	15	0.3%	0	0.0%	18	0.3%
Total	588	100.0%	1 713	100.0%	144	100.0%	4 443	100.0%	186	100.0%	7 074	100.0%

Plumstead Refuse Disposal	Black African		Coloured		Asian		White		Other		Total	
	Num	%	Num	%	Num	%	Num	%	Num	%	Num	%
Removed by local authority/private company at least once a week	582	99.0%	1 710	99.7%	144	98.0%	4 392	98.9%	186	100.0%	7 014	99.1%
Removed by local authority/private company less often	3	0.5%	3	0.2%	3	2.0%	18	0.4%	0	0.0%	27	0.4%
Communal refuse dump	0	0.0%	0	0.0%	0	0.0%	3	0.1%	0	0.0%	3	0.0%
Own refuse dump	0	0.0%	0	0.0%	0	0.0%	3	0.1%	0	0.0%	3	0.0%
No rubbish disposal	0	0.0%	0	0.0%	0	0.0%	0	0.0%	0	0.0%	0	0.0%
Other	3	0.5%	3	0.2%	0	0.0%	24	0.5%	0	0.0%	30	0.4%
Total	588	100.0%	1 716	100.0%	147	100.0%	4 440	100.0%	186	100.0%	7 077	100.0%

[Go to top of document](#)

Household Services Profile continued – 2011 Census

Plumstead Energy used for Lighting	Black African		Coloured		Asian		White		Other		Total	
	Num	%	Num	%	Num	%	Num	%	Num	%	Num	%
Electricity	579	99.0%	1 710	99.8%	144	98.0%	4 416	99.3%	183	100.0%	7 032	99.4%
Gas	3	0.5%	3	0.2%	3	2.0%	15	0.3%	0	0.0%	24	0.3%
Paraffin	0	0.0%	0	0.0%	0	0.0%	0	0.0%	0	0.0%	0	0.0%
Candles	0	0.0%	0	0.0%	0	0.0%	3	0.1%	0	0.0%	3	0.0%
Solar	3	0.5%	0	0.0%	0	0.0%	12	0.3%	0	0.0%	15	0.2%
None	0	0.0%	0	0.0%	0	0.0%	0	0.0%	0	0.0%	0	0.0%
Total	585	100.0%	1 713	100.0%	147	100.0%	4 446	100.0%	183	100.0%	7 074	100.0%

Plumstead Energy used for Cooking	Black African		Coloured		Asian		White		Other		Total	
	Num	%	Num	%	Num	%	Num	%	Num	%	Num	%
Electricity	540	91.8%	1 494	87.1%	108	76.6%	3 918	88.1%	165	88.7%	6 225	87.9%
Gas	33	5.6%	201	11.7%	33	23.4%	483	10.9%	18	9.7%	768	10.8%
Paraffin	0	0.0%	0	0.0%	0	0.0%	6	0.1%	0	0.0%	6	0.1%
Wood	0	0.0%	0	0.0%	0	0.0%	0	0.0%	0	0.0%	0	0.0%
Coal	0	0.0%	0	0.0%	0	0.0%	0	0.0%	0	0.0%	0	0.0%
Animal dung	0	0.0%	0	0.0%	0	0.0%	3	0.1%	0	0.0%	3	0.0%
Solar	0	0.0%	0	0.0%	0	0.0%	9	0.2%	0	0.0%	9	0.1%
Other	12	2.0%	15	0.9%	0	0.0%	30	0.7%	3	1.6%	60	0.8%
None	3	0.5%	6	0.3%	0	0.0%	0	0.0%	0	0.0%	9	0.1%
Total	588	100.0%	1 716	100.0%	141	100.0%	4 449	100.0%	186	100.0%	7 080	100.0%

Plumstead Energy used for Heating	Black African		Coloured		Asian		White		Other		Total	
	Num	%	Num	%	Num	%	Num	%	Num	%	Num	%
Electricity	516	88.2%	1 434	83.6%	117	81.3%	3 651	82.1%	159	86.9%	5 877	83.0%
Gas	30	5.1%	108	6.3%	12	8.3%	324	7.3%	12	6.6%	486	6.9%
Paraffin	0	0.0%	0	0.0%	0	0.0%	9	0.2%	0	0.0%	9	0.1%
Wood	3	0.5%	60	3.5%	6	4.2%	120	2.7%	3	1.6%	192	2.7%
Coal	0	0.0%	3	0.2%	0	0.0%	21	0.5%	0	0.0%	24	0.3%
Animal dung	0	0.0%	6	0.3%	0	0.0%	6	0.1%	0	0.0%	12	0.2%
Solar	3	0.5%	6	0.3%	0	0.0%	36	0.8%	3	1.6%	48	0.7%
Other	0	0.0%	0	0.0%	0	0.0%	0	0.0%	0	0.0%	0	0.0%
None	33	5.6%	99	5.8%	9	6.3%	282	6.3%	6	3.3%	429	6.1%
Total	585	100.0%	1 716	100.0%	144	100.0%	4 449	100.0%	183	100.0%	7 077	100.0%

[Go to top of document](#)