

City of Cape Town – 2011 Census Suburb Retreat

July 2013

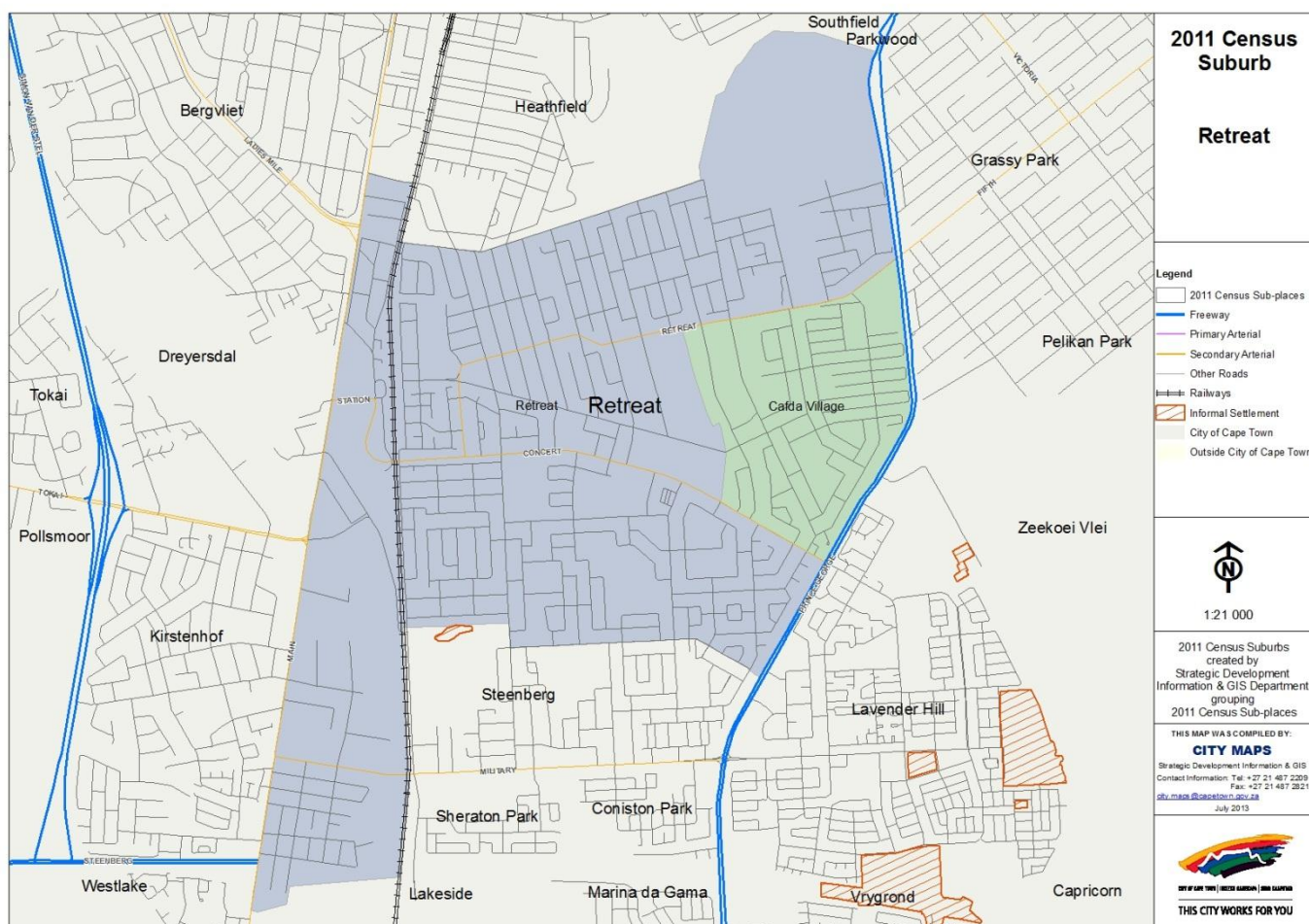
Compiled by Strategic Development Information and GIS Department (SDI&GIS), City of Cape Town
2011 Census data supplied by Statistics South Africa
(Based on information available at the time of compilation as released by Statistics South Africa)

The 2011 Census suburbs (190) have been created by SDI&GIS grouping the 2011 Census sub-places using GIS and December 2011 aerial photography. A sub-place is defined by Statistics South Africa “is the second (lowest) level of the place name category, namely a suburb, section or zone of an (apartheid) township, smallholdings, village, sub-village, ward or informal settlement.”

[Suburb Overview](#), [Demographic Profile](#), [Economic Profile](#), [Dwelling Profile](#), [Household Services Profile](#)

2011 Census Suburb Description

2011 Census suburb Retreat includes the following sub-places: Cafda Village, Retreat.



Data Notes:

- The following databases from Statistics South Africa (SSA) software were used to extract the data for the profiles:
Demographic Profile – Descriptive and Education databases
Economic Profile – Labour Force and Head of Household databases
Dwelling Profile – Dwellings database
Household Services Profile – Household Services database
- In some Census suburbs there may be no data for households, or a very low number, as the Census suburb has population mainly living in collective living quarters (e.g. hotels, hostels, students' residences, hospitals, prisons and other institutions) or is an industrial or commercial area. In these instances the number of households is not applicable. All tables have the data included, even if at times they are "0", for completeness. The tables relating to population, age and labour force indicators would include the population living in these collective living quarters.
- The Census suburbs where the population is categorised as living mainly in collective living quarters or is an industrial or commercial area, the average household size has been excluded as it is not applicable. There are some Census suburbs with an average household size that have a small percentage of the population living in collective living quarters within that Census suburb, and this could artificially inflate the average household size.

2011 Census Suburb Overview

2011 Census Suburb Retreat	2011
Population	35 709
Households	8 316
Average Household Size	4.29

In 2011 the population of 2011 Census suburb Retreat was 35 709 and the number of households was 8 316. The average household size was 4.29.

A household is defined as a group of persons who live together, and provide themselves jointly with food or other essentials for living, or a single person who lives alone (Statistics South Africa).

The population and household numbers above are to be used and quoted as the official numbers for this 2011 Census suburb for 2011.

Key results for 2011 Census Suburb Retreat:

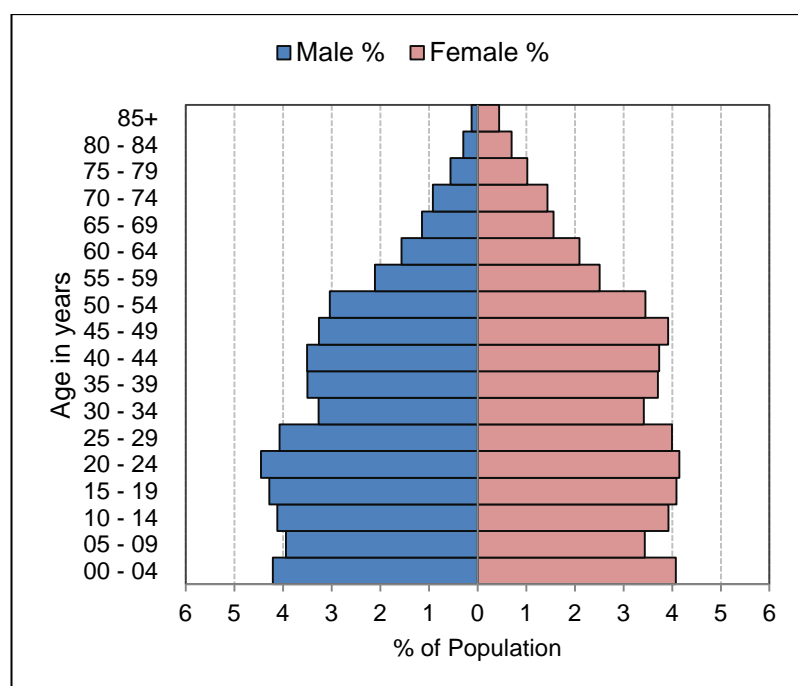
- The population is predominantly Coloured (87%).
- 38% of those aged 20 years and older have completed Grade 12 or higher.
- 82% of the labour force (aged 15 to 64) is employed.
- 39% of households have a monthly income of R3 200 or less.
- 93% of households live in formal dwellings.
- 97% of households have access to piped water in their dwelling or inside their yard.
- 94% of households have access to a flush toilet connected to the public sewer system.
- 99% of households have their refuse removed at least once a week.
- 99% of households use electricity for lighting in their dwelling.

Note: There are small variations in the total population and the number of households in the tables which follow. These occur as Statistics South Africa had to calculate the true population to correct omissions and double counts in the enumeration process. In addition when the data is extracted using the Statistics South Africa software, it randomly rounds off all cells to a base number 3, including the totals. These variations are not significant.

[Go to top of document](#)

Demographic Profile – 2011 Census

Retreat Population	Male		Female		Total	
	Num	%	Num	%	Num	%
Black African	1 535	4.3%	1 414	4.0%	2 949	8.3%
Coloured	14 772	41.4%	16 115	45.1%	30 887	86.5%
Asian	130	0.4%	137	0.4%	267	0.7%
White	433	1.2%	418	1.2%	851	2.4%
Other	392	1.1%	363	1.0%	755	2.1%
Total	17 262	48.3%	18 447	51.7%	35 709	100.0%



Retreat Age	Black African		Coloured		Asian		White		Other		Total	
	Num	%	Num	%	Num	%	Num	%	Num	%	Num	%
0 to 4 years	311	10.5%	2 528	8.2%	18	6.7%	37	4.3%	63	8.3%	2 957	8.3%
5 to 14 years	474	16.1%	4 805	15.6%	33	12.4%	81	9.5%	114	15.1%	5 507	15.4%
15 to 24 years	442	15.0%	5 322	17.2%	47	17.6%	114	13.4%	132	17.4%	6 057	17.0%
25 to 64 years	1 608	54.5%	15 596	50.5%	152	56.9%	541	63.4%	362	47.8%	18 259	51.1%
65 years and older	115	3.9%	2 635	8.5%	17	6.4%	80	9.4%	86	11.4%	2 933	8.2%
Total	2 950	100.0%	30 886	100.0%	267	100.0%	853	100.0%	757	100.0%	35 713	100.0%

Retreat Adult Education (for all aged 20+)	Black African		Coloured		Asian		White		Other		Total	
	Num	%	Num	%	Num	%	Num	%	Num	%	Num	%
No schooling	30	1.7%	288	1.4%	3	1.7%	0	0.0%	18	3.6%	339	1.4%
Some primary	120	6.9%	2 007	9.7%	9	5.0%	12	1.9%	12	2.4%	2 160	9.1%
Completed primary	63	3.6%	1 470	7.1%	6	3.3%	6	0.9%	12	2.4%	1 557	6.6%
Some secondary	534	30.8%	9 555	46.2%	69	38.3%	168	26.5%	195	38.7%	10 521	44.3%
Grade 12	678	39.2%	5 757	27.8%	69	38.3%	255	40.3%	183	36.3%	6 942	29.3%
Higher	303	17.5%	1 569	7.6%	24	13.3%	180	28.4%	81	16.1%	2 157	9.1%
Other	3	0.2%	39	0.2%	0	0.0%	12	1.9%	3	0.6%	57	0.2%
Total	1 731	100.0%	20 685	100.0%	180	100.0%	633	100.0%	504	100.0%	23 733	100.0%

[Go to top of document](#)

Economic Profile – 2011 Census

Retreat Labour Force Indicators	Black African	Coloured	Asian	White	Other	Total
Population aged 15 to 64 years	2 049	20 916	198	654	492	24 309
Labour Force	1 398	13 563	105	477	336	15 879
Employed	1 065	11 235	96	423	270	13 089
Unemployed	333	2 328	9	54	66	2 790
Not Economically Active	651	7 353	93	177	156	8 430
Discouraged Work-seekers	30	396	3	3	6	438
Other not economically active	621	6 957	90	174	150	7 992
Rates %						
Unemployment rate	23.82%	17.16%	8.57%	11.32%	19.64%	17.57%
Labour absorption rate	51.98%	53.71%	48.48%	64.68%	54.88%	53.84%
Labour Force participation rate	68.23%	64.85%	53.03%	72.94%	68.29%	65.32%

Definitions:

Unemployment rate is the proportion of the labour force that is unemployed.

The **labour absorption rate** is the proportion of working age (15 to 64 years) population that is employed.

The **labour force participation rate** is the proportion of the working age population that is either employed or unemployed.

Note: Based on available data as supplied by Statistics South Africa, the people categorised as living in collective living quarters are included in the "Other not economically active" category.

Retreat Monthly Household Income	Black African		Coloured		Asian		White		Other		Total	
	Num	%	Num	%	Num	%	Num	%	Num	%	Num	%
No income	69	10.7%	792	11.1%	3	5.0%	27	9.2%	18	11.8%	909	10.9%
R 1 - R 1 600	72	11.2%	1 038	14.5%	6	10.0%	9	3.1%	18	11.8%	1 143	13.7%
R 1 601 - R 3 200	114	17.8%	1 062	14.8%	6	10.0%	6	2.0%	15	9.8%	1 203	14.5%
R 3 201 - R 6 400	117	18.2%	1 332	18.6%	6	10.0%	27	9.2%	24	15.7%	1 506	18.1%
R 6 401 - R 12 800	132	20.6%	1 302	18.2%	9	15.0%	45	15.3%	36	23.5%	1 524	18.3%
R 12 801 - R 25 600	84	13.1%	978	13.6%	18	30.0%	90	30.6%	27	17.6%	1 197	14.4%
R 25 601 - R 51 200	33	5.1%	531	7.4%	9	15.0%	60	20.4%	9	5.9%	642	7.7%
R 51 201 - R 102 400	15	2.3%	108	1.5%	3	5.0%	24	8.2%	3	2.0%	153	1.8%
R 102 401 or more	6	0.9%	24	0.3%	0	0.0%	6	2.0%	3	2.0%	39	0.5%
Unspecified	0	0.0%	0	0.0%	0	0.0%	0	0.0%	0	0.0%	0	0.0%
Total	642	100.0%	7 167	100.0%	60	100.0%	294	100.0%	153	100.0%	8 316	100.0%

[Go to top of document](#)

Dwelling Profile – 2011 Census

Retreat Type of Dwelling	Black African		Coloured		Asian		White		Other		Total	
	Num	%	Num	%	Num	%	Num	%	Num	%	Num	%
Formal Dwelling	609	94.7%	6 652	92.9%	56	94.9%	294	99.7%	143	91.7%	7 754	93.2%
Informal dwelling / shack in backyard	28	4.4%	427	6.0%	3	5.1%	0	0.0%	7	4.5%	465	5.6%
Informal dwelling / shack NOT in backyard	0	0.0%	18	0.3%	0	0.0%	0	0.0%	2	1.3%	20	0.2%
Other	6	0.9%	67	0.9%	0	0.0%	1	0.3%	4	2.6%	78	0.9%
Total	643	100.0%	7 164	100.0%	59	100.0%	295	100.0%	156	100.0%	8 317	100.0%

Retreat Tenure Status	Black African		Coloured		Asian		White		Other		Total	
	Num	%	Num	%	Num	%	Num	%	Num	%	Num	%
Owned and fully paid off	99	15.4%	3 022	42.2%	19	32.8%	117	39.8%	45	28.8%	3 302	39.7%
Owned but not yet paid off	134	20.8%	1 670	23.3%	25	43.1%	120	40.8%	38	24.4%	1 987	23.9%
Rented	386	59.9%	2 178	30.4%	13	22.4%	54	18.4%	62	39.7%	2 693	32.4%
Occupied rent-free	16	2.5%	132	1.8%	1	1.7%	1	0.3%	7	4.5%	157	1.9%
Other	9	1.4%	161	2.2%	0	0.0%	2	0.7%	4	2.6%	176	2.1%
Total	644	100.0%	7 163	100.0%	58	100.0%	294	100.0%	156	100.0%	8 315	100.0%

[Go to top of document](#)

Household Services Profile – 2011 Census

Retreat Access to Piped Water	Black African		Coloured		Asian		White		Other		Total	
	Num	%	Num	%	Num	%	Num	%	Num	%	Num	%
Piped water inside dwelling	603	93.5%	6 813	95.1%	54	100.0%	291	99.0%	147	94.2%	7 908	95.2%
Piped water inside yard	24	3.7%	120	1.7%	0	0.0%	3	1.0%	6	3.8%	153	1.8%
Piped water outside yard: < 200m	0	0.0%	27	0.4%	0	0.0%	0	0.0%	0	0.0%	27	0.3%
Piped water outside yard: > 200m	0	0.0%	12	0.2%	0	0.0%	0	0.0%	0	0.0%	12	0.1%
No access to piped water	18	2.8%	189	2.6%	0	0.0%	0	0.0%	3	1.9%	210	2.5%
Total	645	100.0%	7 161	100.0%	54	100.0%	294	100.0%	156	100.0%	8 310	100.0%

Retreat Toilet Facility	Black African		Coloured		Asian		White		Other		Total	
	Num	%	Num	%	Num	%	Num	%	Num	%	Num	%
Flush toilet (connected to sewerage system)	603	94.8%	6 675	93.2%	54	90.0%	288	98.0%	147	94.2%	7 767	93.5%
Flush toilet (with septic tank)	3	0.5%	12	0.2%	0	0.0%	0	0.0%	0	0.0%	15	0.2%
Chemical toilet	0	0.0%	6	0.1%	0	0.0%	0	0.0%	0	0.0%	6	0.1%
Pit toilet with ventilation (VIP)	0	0.0%	3	0.0%	0	0.0%	0	0.0%	0	0.0%	3	0.0%
Pit toilet without ventilation	0	0.0%	0	0.0%	0	0.0%	0	0.0%	0	0.0%	0	0.0%
Bucket toilet	6	0.9%	108	1.5%	3	5.0%	3	1.0%	0	0.0%	120	1.4%
Other	15	2.4%	249	3.5%	3	5.0%	3	1.0%	6	3.8%	276	3.3%
None	9	1.4%	108	1.5%	0	0.0%	0	0.0%	3	1.9%	120	1.4%
Total	636	100.0%	7 161	100.0%	60	100.0%	294	100.0%	156	100.0%	8 307	100.0%

Retreat Refuse Disposal	Black African		Coloured		Asian		White		Other		Total	
	Num	%	Num	%	Num	%	Num	%	Num	%	Num	%
Removed by local authority/private company at least once a week	636	98.1%	7 062	98.6%	60	100.0%	291	98.0%	153	98.1%	8 202	98.6%
Removed by local authority/private company less often	3	0.5%	3	0.0%	0	0.0%	0	0.0%	0	0.0%	6	0.1%
Communal refuse dump	0	0.0%	30	0.4%	0	0.0%	3	1.0%	0	0.0%	33	0.4%
Own refuse dump	0	0.0%	3	0.0%	0	0.0%	0	0.0%	0	0.0%	3	0.0%
No rubbish disposal	3	0.5%	15	0.2%	0	0.0%	0	0.0%	0	0.0%	18	0.2%
Other	6	0.9%	48	0.7%	0	0.0%	3	1.0%	3	1.9%	60	0.7%
Total	648	100.0%	7 161	100.0%	60	100.0%	297	100.0%	156	100.0%	8 322	100.0%

[Go to top of document](#)

Household Services Profile continued – 2011 Census

Retreat Energy used for Lighting	Black African		Coloured		Asian		White		Other		Total	
	Num	%	Num	%	Num	%	Num	%	Num	%	Num	%
Electricity	639	98.6%	7 104	99.2%	60	100.0%	291	99.0%	156	100.0%	8 250	99.2%
Gas	0	0.0%	6	0.1%	0	0.0%	0	0.0%	0	0.0%	6	0.1%
Paraffin	0	0.0%	6	0.1%	0	0.0%	3	1.0%	0	0.0%	9	0.1%
Candles	3	0.5%	12	0.2%	0	0.0%	0	0.0%	0	0.0%	15	0.2%
Solar	3	0.5%	6	0.1%	0	0.0%	0	0.0%	0	0.0%	9	0.1%
None	3	0.5%	24	0.3%	0	0.0%	0	0.0%	0	0.0%	27	0.3%
Total	648	100.0%	7 158	100.0%	60	100.0%	294	100.0%	156	100.0%	8 316	100.0%

Retreat Energy used for Cooking	Black African		Coloured		Asian		White		Other		Total	
	Num	%	Num	%	Num	%	Num	%	Num	%	Num	%
Electricity	606	94.0%	6 639	92.8%	48	80.0%	255	86.7%	132	84.6%	7 680	92.4%
Gas	30	4.7%	471	6.6%	12	20.0%	39	13.3%	24	15.4%	576	6.9%
Paraffin	0	0.0%	6	0.1%	0	0.0%	0	0.0%	0	0.0%	6	0.1%
Wood	0	0.0%	6	0.1%	0	0.0%	0	0.0%	0	0.0%	6	0.1%
Coal	0	0.0%	0	0.0%	0	0.0%	0	0.0%	0	0.0%	0	0.0%
Animal dung	0	0.0%	0	0.0%	0	0.0%	0	0.0%	0	0.0%	0	0.0%
Solar	3	0.5%	6	0.1%	0	0.0%	0	0.0%	0	0.0%	9	0.1%
Other	6	0.9%	12	0.2%	0	0.0%	0	0.0%	0	0.0%	18	0.2%
None	0	0.0%	15	0.2%	0	0.0%	0	0.0%	0	0.0%	15	0.2%
Total	645	100.0%	7 155	100.0%	60	100.0%	294	100.0%	156	100.0%	8 310	100.0%

Retreat Energy used for Heating	Black African		Coloured		Asian		White		Other		Total	
	Num	%	Num	%	Num	%	Num	%	Num	%	Num	%
Electricity	528	82.2%	5 409	75.5%	42	73.7%	252	86.6%	105	68.6%	6 336	76.3%
Gas	12	1.9%	105	1.5%	0	0.0%	18	6.2%	6	3.9%	141	1.7%
Paraffin	3	0.5%	6	0.1%	0	0.0%	0	0.0%	0	0.0%	9	0.1%
Wood	3	0.5%	105	1.5%	0	0.0%	6	2.1%	3	2.0%	117	1.4%
Coal	0	0.0%	3	0.0%	0	0.0%	0	0.0%	0	0.0%	3	0.0%
Animal dung	0	0.0%	6	0.1%	0	0.0%	0	0.0%	0	0.0%	6	0.1%
Solar	0	0.0%	15	0.2%	0	0.0%	3	1.0%	0	0.0%	18	0.2%
Other	0	0.0%	0	0.0%	0	0.0%	0	0.0%	0	0.0%	0	0.0%
None	96	15.0%	1 515	21.1%	15	26.3%	12	4.1%	39	25.5%	1 677	20.2%
Total	642	100.0%	7 164	100.0%	57	100.0%	291	100.0%	153	100.0%	8 307	100.0%

[Go to top of document](#)