

City of Cape Town – 2011 Census Suburb Silvertown

July 2013

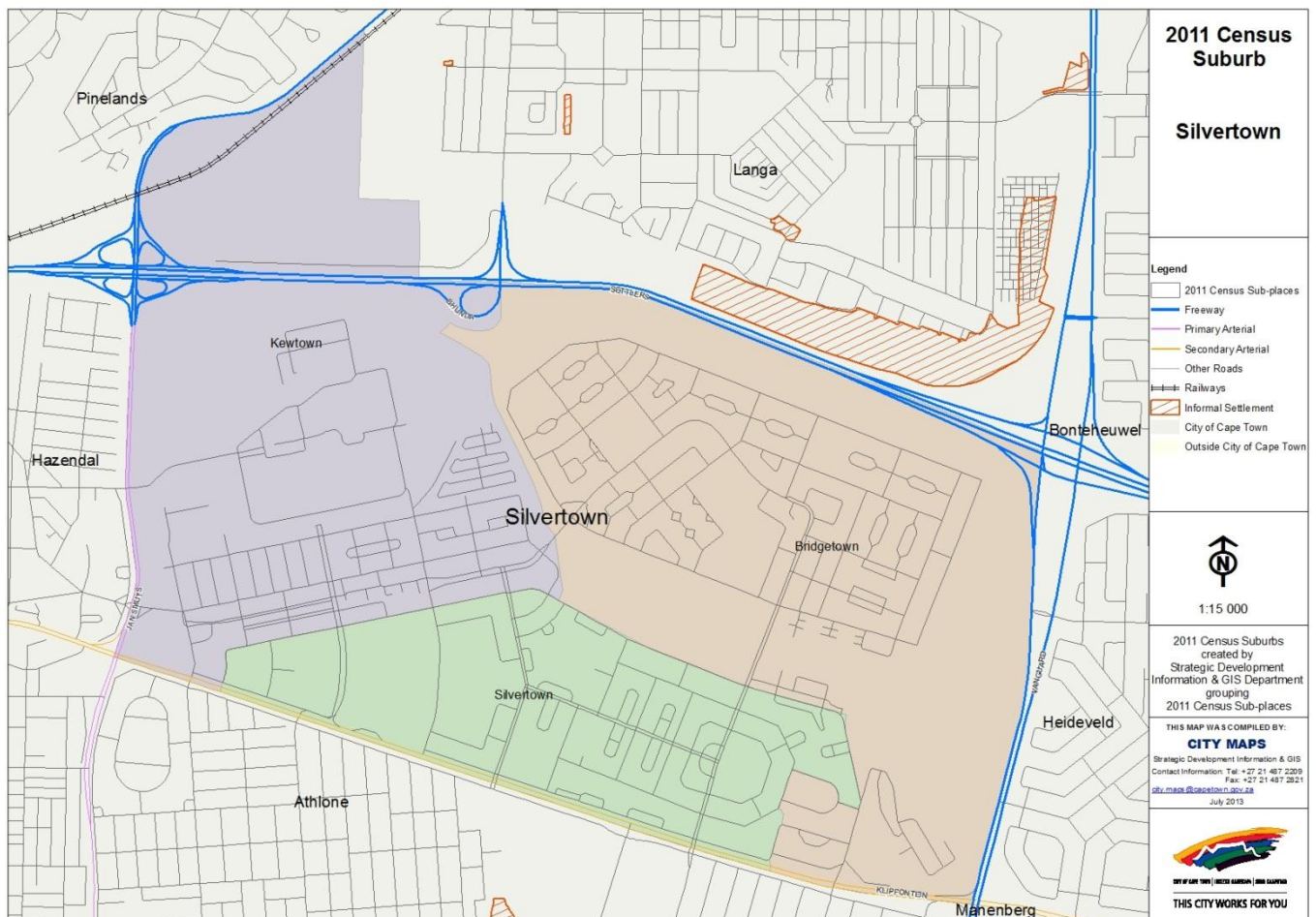
Compiled by Strategic Development Information and GIS Department (SDI&GIS), City of Cape Town
2011 Census data supplied by Statistics South Africa
(Based on information available at the time of compilation as released by Statistics South Africa)

The 2011 Census suburbs (190) have been created by SDI&GIS grouping the 2011 Census sub-places using GIS and December 2011 aerial photography. A sub-place is defined by Statistics South Africa “is the second (lowest) level of the place name category, namely a suburb, section or zone of an (apartheid) township, smallholdings, village, sub-village, ward or informal settlement.”

[Suburb Overview](#), [Demographic Profile](#), [Economic Profile](#), [Dwelling Profile](#), [Household Services Profile](#)

2011 Census Suburb Description

2011 Census suburb Silvertown includes the following sub-places: Bridgetown, Kewtown, Silvertown.



Data Notes:

- The following databases from Statistics South Africa (SSA) software were used to extract the data for the profiles:
Demographic Profile – Descriptive and Education databases
Economic Profile – Labour Force and Head of Household databases
Dwelling Profile – Dwellings database
Household Services Profile – Household Services database
- In some Census suburbs there may be no data for households, or a very low number, as the Census suburb has population mainly living in collective living quarters (e.g. hotels, hostels, students' residences, hospitals, prisons and other institutions) or is an industrial or commercial area. In these instances the number of households is not applicable. All tables have the data included, even if at times they are "0", for completeness. The tables relating to population, age and labour force indicators would include the population living in these collective living quarters.
- The Census suburbs where the population is categorised as living mainly in collective living quarters or is an industrial or commercial area, the average household size has been excluded as it is not applicable. There are some Census suburbs with an average household size that have a small percentage of the population living in collective living quarters within that Census suburb, and this could artificially inflate the average household size.

2011 Census Suburb Overview

2011 Census Suburb Silvertown	2011
Population	27 146
Households	6 165
Average Household Size	4.40

In 2011 the population of 2011 Census suburb Silvertown was 27 146 and the number of households was 6 165. The average household size was 4.40.

A household is defined as a group of persons who live together, and provide themselves jointly with food or other essentials for living, or a single person who lives alone (Statistics South Africa).

The population and household numbers above are to be used and quoted as the official numbers for this 2011 Census suburb for 2011.

Key results for 2011 Census Suburb Silvertown:

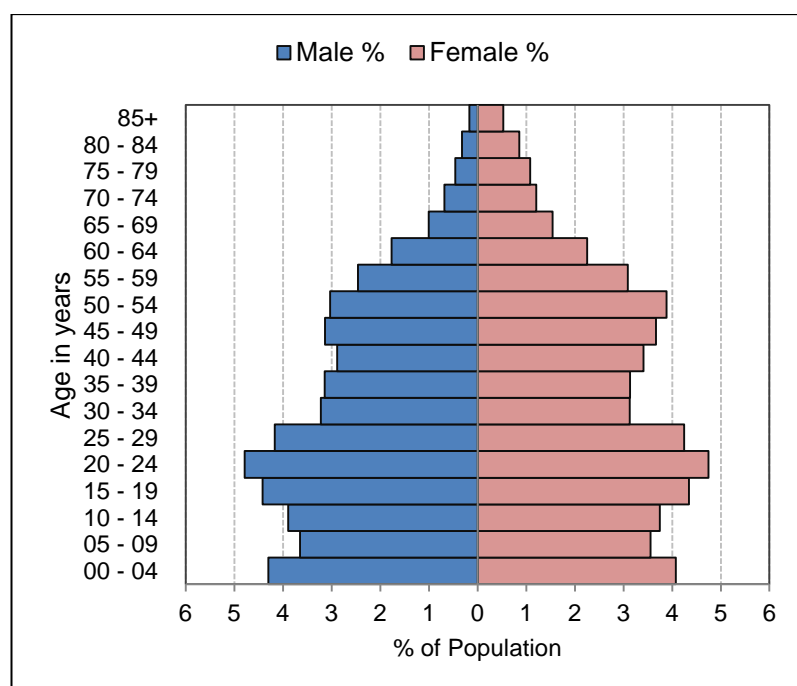
- The population is predominantly Coloured (95%).
- 32% of those aged 20 years and older have completed Grade 12 or higher.
- 80% of the labour force (aged 15 to 64) is employed.
- 43% of households have a monthly income of R3 200 or less.
- 98% of households live in formal dwellings.
- 99% of households have access to piped water in their dwelling or inside their yard.
- 96% of households have access to a flush toilet connected to the public sewer system.
- 99.9% of households have their refuse removed at least once a week.
- 99% of households use electricity for lighting in their dwelling.

Note: There are small variations in the total population and the number of households in the tables which follow. These occur as Statistics South Africa had to calculate the true population to correct omissions and double counts in the enumeration process. In addition when the data is extracted using the Statistics South Africa software, it randomly rounds off all cells to a base number 3, including the totals. These variations are not significant.

[Go to top of document](#)

Demographic Profile – 2011 Census

Silvertown Population	Male		Female		Total	
	Num	%	Num	%	Num	%
Black African	430	1.6%	432	1.6%	862	3.2%
Coloured	12 215	45.0%	13 640	50.2%	25 855	95.2%
Asian	116	0.4%	123	0.5%	239	0.9%
White	30	0.1%	18	0.1%	48	0.2%
Other	99	0.4%	43	0.2%	142	0.5%
Total	12 890	47.5%	14 256	52.5%	27 146	100.0%



Silvertown Age	Black African		Coloured		Asian		White		Other		Total	
	Num	%	Num	%	Num	%	Num	%	Num	%	Num	%
0 to 4 years	91	10.5%	2 141	8.3%	26	10.8%	7	15.2%	10	6.9%	2 275	8.4%
5 to 14 years	118	13.6%	3 875	15.0%	22	9.2%	0	0.0%	14	9.7%	4 029	14.8%
15 to 24 years	173	20.0%	4 713	18.2%	36	15.0%	9	19.6%	37	25.7%	4 968	18.3%
25 to 64 years	400	46.2%	13 111	50.7%	134	55.8%	24	52.2%	77	53.5%	13 746	50.6%
65 years and older	83	9.6%	2 015	7.8%	22	9.2%	6	13.0%	6	4.2%	2 132	7.9%
Total	865	100.0%	25 855	100.0%	240	100.0%	46	100.0%	144	100.0%	27 150	100.0%

Silvertown Adult Education (for all aged 20+)	Black African		Coloured		Asian		White		Other		Total	
	Num	%	Num	%	Num	%	Num	%	Num	%	Num	%
No schooling	3	0.6%	189	1.1%	0	0.0%	0	0.0%	6	6.1%	198	1.1%
Some primary	30	6.1%	1 491	8.5%	15	8.5%	0	0.0%	3	3.0%	1 539	8.4%
Completed primary	24	4.8%	1 227	7.0%	6	3.4%	0	0.0%	3	3.0%	1 260	6.9%
Some secondary	213	43.0%	9 120	52.2%	60	33.9%	9	37.5%	39	39.4%	9 441	51.6%
Grade 12	183	37.0%	4 869	27.8%	57	32.2%	12	50.0%	36	36.4%	5 157	28.2%
Higher	42	8.5%	552	3.2%	39	22.0%	3	12.5%	12	12.1%	648	3.5%
Other	0	0.0%	36	0.2%	0	0.0%	0	0.0%	0	0.0%	36	0.2%
Total	495	100.0%	17 484	100.0%	177	100.0%	24	100.0%	99	100.0%	18 279	100.0%

[Go to top of document](#)

Economic Profile – 2011 Census

Silvertown Labour Force Indicators	Black African	Coloured	Asian	White	Other	Total
Population aged 15 to 64 years	567	17 820	171	33	114	18 705
Labour Force	321	10 368	105	15	81	10 890
Employed	273	8 292	93	12	75	8 745
Unemployed	48	2 076	12	3	6	2 145
Not Economically Active	246	7 452	66	18	33	7 815
Discouraged Work-seekers	12	906	3	0	3	924
Other not economically active	234	6 546	63	18	30	6 891
Rates %						
Unemployment rate	14.95%	20.02%	11.43%	20.00%	7.41%	19.70%
Labour absorption rate	48.15%	46.53%	54.39%	36.36%	65.79%	46.75%
Labour Force participation rate	56.61%	58.18%	61.40%	45.45%	71.05%	58.22%

Definitions:

Unemployment rate is the proportion of the labour force that is unemployed.

The **labour absorption rate** is the proportion of working age (15 to 64 years) population that is employed.

The **labour force participation rate** is the proportion of the working age population that is either employed or unemployed.

Note: Based on available data as supplied by Statistics South Africa, the people categorised as living in collective living quarters are included in the "Other not economically active" category.

Silvertown Monthly Household Income	Black African		Coloured		Asian		White		Other		Total	
	Num	%	Num	%	Num	%	Num	%	Num	%	Num	%
No income	30	15.6%	708	12.1%	15	18.5%	3	20.0%	3	14.3%	759	12.3%
R 1 - R 1 600	21	10.9%	939	16.0%	9	11.1%	3	20.0%	0	0.0%	972	15.8%
R 1 601 - R 3 200	24	12.5%	885	15.1%	18	22.2%	0	0.0%	0	0.0%	927	15.0%
R 3 201 - R 6 400	33	17.2%	1 095	18.7%	12	14.8%	3	20.0%	6	28.6%	1 149	18.6%
R 6 401 - R 12 800	42	21.9%	1 206	20.6%	9	11.1%	3	20.0%	6	28.6%	1 266	20.5%
R 12 801 - R 25 600	30	15.6%	768	13.1%	12	14.8%	3	20.0%	3	14.3%	816	13.2%
R 25 601 - R 51 200	12	6.3%	222	3.8%	6	7.4%	0	0.0%	3	14.3%	243	3.9%
R 51 201 - R 102 400	0	0.0%	18	0.3%	0	0.0%	0	0.0%	0	0.0%	18	0.3%
R 102 401 or more	0	0.0%	21	0.4%	0	0.0%	0	0.0%	0	0.0%	21	0.3%
Unspecified	0	0.0%	0	0.0%	0	0.0%	0	0.0%	0	0.0%	0	0.0%
Total	192	100.0%	5 862	100.0%	81	100.0%	15	100.0%	21	100.0%	6 171	100.0%

[Go to top of document](#)

Dwelling Profile – 2011 Census

Silvertown Type of Dwelling	Black African		Coloured		Asian		White		Other		Total	
	Num	%	Num	%	Num	%	Num	%	Num	%	Num	%
Formal Dwelling	183	98.4%	5 724	97.6%	70	92.1%	9	90.0%	22	84.6%	6 008	97.5%
Informal dwelling / shack in backyard	0	0.0%	114	1.9%	2	2.6%	0	0.0%	2	7.7%	118	1.9%
Informal dwelling / shack NOT in backyard	3	1.6%	10	0.2%	2	2.6%	0	0.0%	2	7.7%	17	0.3%
Other	0	0.0%	18	0.3%	2	2.6%	1	10.0%	0	0.0%	21	0.3%
Total	186	100.0%	5 866	100.0%	76	100.0%	10	100.0%	26	100.0%	6 164	100.0%

Silvertown Tenure Status	Black African		Coloured		Asian		White		Other		Total	
	Num	%	Num	%	Num	%	Num	%	Num	%	Num	%
Owned and fully paid off	67	35.6%	3 263	55.6%	15	19.7%	3	30.0%	6	22.2%	3 354	54.4%
Owned but not yet paid off	34	18.1%	1 017	17.3%	8	10.5%	0	0.0%	0	0.0%	1 059	17.2%
Rented	78	41.5%	1 416	24.1%	47	61.8%	4	40.0%	21	77.8%	1 566	25.4%
Occupied rent-free	7	3.7%	101	1.7%	6	7.9%	2	20.0%	0	0.0%	116	1.9%
Other	2	1.1%	67	1.1%	0	0.0%	1	10.0%	0	0.0%	70	1.1%
Total	188	100.0%	5 864	100.0%	76	100.0%	10	100.0%	27	100.0%	6 165	100.0%

[Go to top of document](#)

Household Services Profile – 2011 Census

Silvertown Access to Piped Water	Black African		Coloured		Asian		White		Other		Total	
	Num	%	Num	%	Num	%	Num	%	Num	%	Num	%
Piped water inside dwelling	183	98.4%	5 706	97.3%	75	96.2%	9	100.0%	21	77.8%	5 994	97.3%
Piped water inside yard	3	1.6%	99	1.7%	3	3.8%	0	0.0%	3	11.1%	108	1.8%
Piped water outside yard: < 200m	0	0.0%	21	0.4%	0	0.0%	0	0.0%	0	0.0%	21	0.3%
Piped water outside yard: > 200m	0	0.0%	3	0.1%	0	0.0%	0	0.0%	0	0.0%	3	0.0%
No access to piped water	0	0.0%	33	0.6%	0	0.0%	0	0.0%	3	11.1%	36	0.6%
Total	186	100.0%	5 862	100.0%	78	100.0%	9	100.0%	27	100.0%	6 162	100.0%

Silvertown Toilet Facility	Black African		Coloured		Asian		White		Other		Total	
	Num	%	Num	%	Num	%	Num	%	Num	%	Num	%
Flush toilet (connected to sewerage system)	177	96.7%	5 637	96.1%	72	96.0%	12	100.0%	21	77.8%	5 919	96.0%
Flush toilet (with septic tank)	0	0.0%	9	0.2%	0	0.0%	0	0.0%	0	0.0%	9	0.1%
Chemical toilet	0	0.0%	3	0.1%	0	0.0%	0	0.0%	0	0.0%	3	0.0%
Pit toilet with ventilation (VIP)	0	0.0%	3	0.1%	0	0.0%	0	0.0%	0	0.0%	3	0.0%
Pit toilet without ventilation	0	0.0%	0	0.0%	0	0.0%	0	0.0%	0	0.0%	0	0.0%
Bucket toilet	3	1.6%	81	1.4%	3	4.0%	0	0.0%	3	11.1%	90	1.5%
Other	0	0.0%	48	0.8%	0	0.0%	0	0.0%	0	0.0%	48	0.8%
None	3	1.6%	87	1.5%	0	0.0%	0	0.0%	3	11.1%	93	1.5%
Total	183	100.0%	5 868	100.0%	75	100.0%	12	100.0%	27	100.0%	6 165	100.0%

Silvertown Refuse Disposal	Black African		Coloured		Asian		White		Other		Total	
	Num	%	Num	%	Num	%	Num	%	Num	%	Num	%
Removed by local authority/private company at least once a week	189	100.0%	5 856	99.8%	78	100.0%	9	100.0%	27	100.0%	6 159	99.9%
Removed by local authority/private company less often	0	0.0%	3	0.1%	0	0.0%	0	0.0%	0	0.0%	3	0.0%
Communal refuse dump	0	0.0%	3	0.1%	0	0.0%	0	0.0%	0	0.0%	3	0.0%
Own refuse dump	0	0.0%	0	0.0%	0	0.0%	0	0.0%	0	0.0%	0	0.0%
No rubbish disposal	0	0.0%	3	0.1%	0	0.0%	0	0.0%	0	0.0%	3	0.0%
Other	0	0.0%	0	0.0%	0	0.0%	0	0.0%	0	0.0%	0	0.0%
Total	189	100.0%	5 865	100.0%	78	100.0%	9	100.0%	27	100.0%	6 168	100.0%

[Go to top of document](#)

Household Services Profile continued – 2011 Census

Silvertown Energy used for Lighting	Black African		Coloured		Asian		White		Other		Total	
	Num	%	Num	%	Num	%	Num	%	Num	%	Num	%
Electricity	186	98.4%	5 799	98.8%	78	100.0%	9	100.0%	27	100.0%	6 099	98.8%
Gas	0	0.0%	21	0.4%	0	0.0%	0	0.0%	0	0.0%	21	0.3%
Paraffin	0	0.0%	3	0.1%	0	0.0%	0	0.0%	0	0.0%	3	0.0%
Candles	0	0.0%	9	0.2%	0	0.0%	0	0.0%	0	0.0%	9	0.1%
Solar	0	0.0%	18	0.3%	0	0.0%	0	0.0%	0	0.0%	18	0.3%
None	3	1.6%	18	0.3%	0	0.0%	0	0.0%	0	0.0%	21	0.3%
Total	189	100.0%	5 868	100.0%	78	100.0%	9	100.0%	27	100.0%	6 171	100.0%

Silvertown Energy used for Cooking	Black African		Coloured		Asian		White		Other		Total	
	Num	%	Num	%	Num	%	Num	%	Num	%	Num	%
Electricity	180	95.2%	5 544	94.5%	72	96.0%	12	100.0%	27	100.0%	5 835	94.6%
Gas	9	4.8%	288	4.9%	3	4.0%	0	0.0%	0	0.0%	300	4.9%
Paraffin	0	0.0%	3	0.1%	0	0.0%	0	0.0%	0	0.0%	3	0.0%
Wood	0	0.0%	0	0.0%	0	0.0%	0	0.0%	0	0.0%	0	0.0%
Coal	0	0.0%	0	0.0%	0	0.0%	0	0.0%	0	0.0%	0	0.0%
Animal dung	0	0.0%	3	0.1%	0	0.0%	0	0.0%	0	0.0%	3	0.0%
Solar	0	0.0%	9	0.2%	0	0.0%	0	0.0%	0	0.0%	9	0.1%
Other	0	0.0%	3	0.1%	0	0.0%	0	0.0%	0	0.0%	3	0.0%
None	0	0.0%	15	0.3%	0	0.0%	0	0.0%	0	0.0%	15	0.2%
Total	189	100.0%	5 865	100.0%	75	100.0%	12	100.0%	27	100.0%	6 168	100.0%

Silvertown Energy used for Heating	Black African		Coloured		Asian		White		Other		Total	
	Num	%	Num	%	Num	%	Num	%	Num	%	Num	%
Electricity	171	90.5%	5 451	93.0%	51	68.0%	9	100.0%	21	87.5%	5 703	92.6%
Gas	3	1.6%	63	1.1%	3	4.0%	0	0.0%	3	12.5%	72	1.2%
Paraffin	6	3.2%	6	0.1%	3	4.0%	0	0.0%	0	0.0%	15	0.2%
Wood	0	0.0%	12	0.2%	0	0.0%	0	0.0%	0	0.0%	12	0.2%
Coal	0	0.0%	0	0.0%	0	0.0%	0	0.0%	0	0.0%	0	0.0%
Animal dung	0	0.0%	3	0.1%	0	0.0%	0	0.0%	0	0.0%	3	0.0%
Solar	0	0.0%	9	0.2%	0	0.0%	0	0.0%	0	0.0%	9	0.1%
Other	0	0.0%	0	0.0%	0	0.0%	0	0.0%	0	0.0%	0	0.0%
None	9	4.8%	318	5.4%	18	24.0%	0	0.0%	0	0.0%	345	5.6%
Total	189	100.0%	5 862	100.0%	75	100.0%	9	100.0%	24	100.0%	6 159	100.0%

[Go to top of document](#)