

# City of Cape Town – 2011 Census Suburb Youngsfield

July 2013

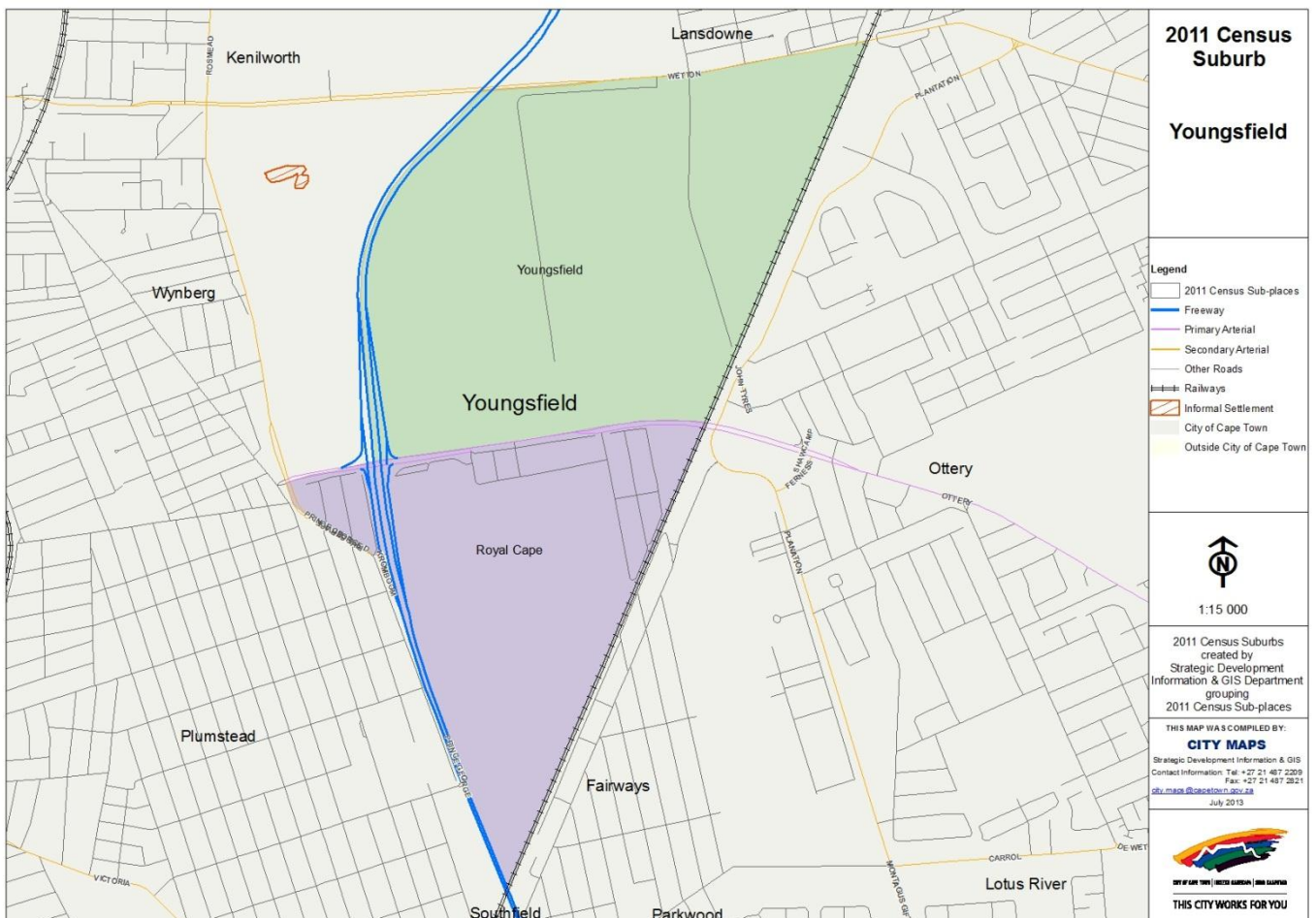
Compiled by Strategic Development Information and GIS Department (SDI&GIS), City of Cape Town  
2011 Census data supplied by Statistics South Africa  
(Based on information available at the time of compilation as released by Statistics South Africa)

The 2011 Census suburbs (190) have been created by SDI&GIS grouping the 2011 Census sub-places using GIS and December 2011 aerial photography. A sub-place is defined by Statistics South Africa “is the second (lowest) level of the place name category, namely a suburb, section or zone of an (apartheid) township, smallholdings, village, sub-village, ward or informal settlement.”

[Suburb Overview](#), [Demographic Profile](#), [Economic Profile](#), [Dwelling Profile](#), [Household Services Profile](#)

## 2011 Census Suburb Description

2011 Census suburb Youngsfield includes the following sub-places: Royal Cape, Youngsfield.



**Data Notes:**

- The following databases from Statistics South Africa (SSA) software were used to extract the data for the profiles:  
Demographic Profile – Descriptive and Education databases  
Economic Profile – Labour Force and Head of Household databases  
Dwelling Profile – Dwellings database  
Household Services Profile – Household Services database
- In some Census suburbs there may be no data for households, or a very low number, as the Census suburb has population mainly living in collective living quarters (e.g. hotels, hostels, students' residences, hospitals, prisons and other institutions) or is an industrial or commercial area. In these instances the number of households is not applicable. All tables have the data included, even if at times they are "0", for completeness. The tables relating to population, age and labour force indicators would include the population living in these collective living quarters.
- The Census suburbs where the population is categorised as living mainly in collective living quarters or is an industrial or commercial area, the average household size has been excluded as it is not applicable. There are some Census suburbs with an average household size that have a small percentage of the population living in collective living quarters within that Census suburb, and this could artificially inflate the average household size.

**2011 Census Suburb Overview**

<b>2011 Census Suburb Youngsfield</b>	<b>2011</b>
Population	887
Households	210
Average Household Size	4.22

In 2011 the population of 2011 Census suburb Youngsfield was 887 and the number of households was 210. The average household size was 4.22.

A household is defined as a group of persons who live together, and provide themselves jointly with food or other essentials for living, or a single person who lives alone (Statistics South Africa).

The population and household numbers above are to be used and quoted as the official numbers for this 2011 Census suburb for 2011.

**Key results for 2011 Census Suburb Youngsfield:**

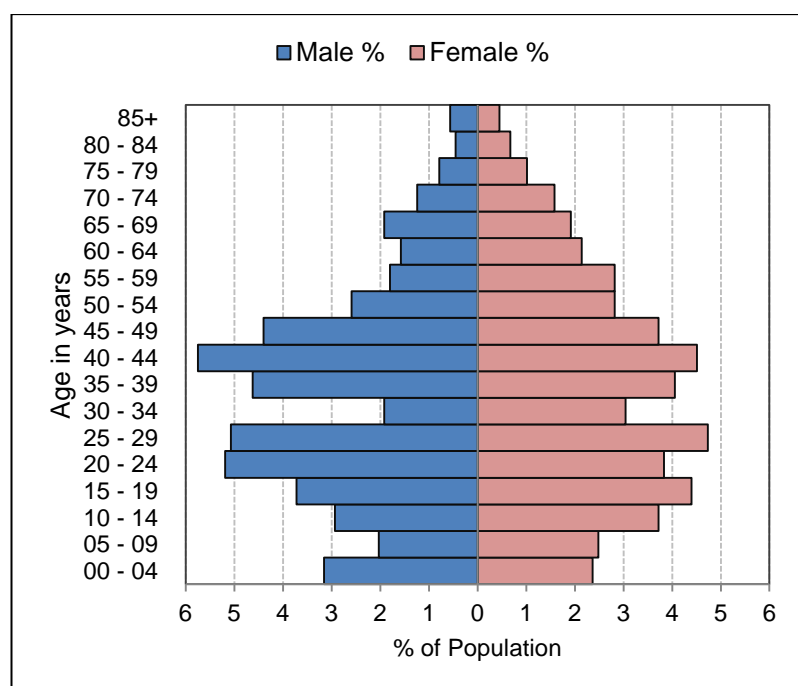
- The population is predominantly Coloured (52%), Black African (21%) and White (20%).
- 70% of those aged 20 years and older have completed Grade 12 or higher.
- 95% of the labour force (aged 15 to 64) is employed.
- 14% of households have a monthly income of R3 200 or less.
- 100% of households live in formal dwellings.
- 100% of households have access to piped water in their dwelling or inside their yard.
- 100% of households have access to a flush toilet connected to the public sewer system.
- 100% of households have their refuse removed at least once a week.
- 100% of households use electricity for lighting in their dwelling.

**Note:** There are small variations in the total population and the number of households in the tables which follow. These occur as Statistics South Africa had to calculate the true population to correct omissions and double counts in the enumeration process. In addition when the data is extracted using the Statistics South Africa software, it randomly rounds off all cells to a base number 3, including the totals. These variations are not significant.

[Go to top of document](#)

## Demographic Profile – 2011 Census

Youngsfield Population	Male		Female		Total	
	Num	%	Num	%	Num	%
Black African	111	12.5%	79	8.9%	190	21.4%
Coloured	210	23.6%	254	28.6%	464	52.3%
Asian	17	1.9%	18	2.0%	35	3.9%
White	95	10.7%	84	9.5%	179	20.2%
Other	9	1.0%	11	1.2%	20	2.3%
Total	442	49.8%	446	50.2%	888	100.0%



Youngsfield Age	Black African		Coloured		Asian		White		Other		Total	
	Num	%	Num	%	Num	%	Num	%	Num	%	Num	%
0 to 4 years	7	3.7%	32	6.9%	2	6.3%	2	1.1%	5	21.7%	48	5.4%
5 to 14 years	8	4.3%	72	15.6%	4	12.5%	12	6.7%	4	17.4%	100	11.3%
15 to 24 years	54	28.7%	80	17.3%	2	6.3%	16	8.9%	2	8.7%	154	17.4%
25 to 64 years	117	62.2%	253	54.6%	22	68.8%	90	50.0%	10	43.5%	492	55.5%
65 years and older	2	1.1%	26	5.6%	2	6.3%	60	33.3%	2	8.7%	92	10.4%
Total	188	100.0%	463	100.0%	32	100.0%	180	100.0%	23	100.0%	886	100.0%

Youngsfield Adult Education (for all aged 20+)	Black African		Coloured		Asian		White		Other		Total	
	Num	%	Num	%	Num	%	Num	%	Num	%	Num	%
No schooling	0	0.0%	3	1.0%	0	0.0%	0	0.0%	0	0.0%	3	0.6%
Some primary	0	0.0%	9	2.9%	0	0.0%	3	2.2%	0	0.0%	12	2.2%
Completed primary	0	0.0%	3	1.0%	0	0.0%	0	0.0%	0	0.0%	3	0.6%
Some secondary	6	15.4%	78	25.0%	9	30.0%	39	28.3%	6	33.3%	138	25.7%
Grade 12	21	53.8%	96	30.8%	6	20.0%	54	39.1%	3	16.7%	180	33.5%
Higher	12	30.8%	120	38.5%	15	50.0%	39	28.3%	9	50.0%	195	36.3%
Other	0	0.0%	3	1.0%	0	0.0%	3	2.2%	0	0.0%	6	1.1%
Total	39	100.0%	312	100.0%	30	100.0%	138	100.0%	18	100.0%	537	100.0%

[Go to top of document](#)

## Economic Profile – 2011 Census

Youngsfield Labour Force Indicators	Black African	Coloured	Asian	White	Other	Total
<b>Population aged 15 to 64 years</b>	<b>171</b>	<b>336</b>	<b>24</b>	<b>105</b>	<b>12</b>	<b>648</b>
<b>Labour Force</b>	<b>27</b>	<b>222</b>	<b>18</b>	<b>66</b>	<b>6</b>	<b>339</b>
Employed	24	213	18	60	6	321
Unemployed	3	9	0	6	0	18
<b>Not Economically Active</b>	<b>144</b>	<b>114</b>	<b>6</b>	<b>39</b>	<b>6</b>	<b>309</b>
Discouraged Work-seekers	0	0	0	0	0	0
Other not economically active	144	114	6	39	6	309
<b>Rates %</b>						
Unemployment rate	11.11%	4.05%	0.00%	9.09%	0.00%	5.31%
Labour absorption rate	14.04%	63.39%	75.00%	57.14%	50.00%	49.54%
Labour Force participation rate	15.79%	66.07%	75.00%	62.86%	50.00%	52.31%

### Definitions:

**Unemployment rate** is the proportion of the labour force that is unemployed.

The **labour absorption rate** is the proportion of working age (15 to 64 years) population that is employed.

The **labour force participation rate** is the proportion of the working age population that is either employed or unemployed.

**Note:** Based on available data as supplied by Statistics South Africa, the people categorised as living in collective living quarters are included in the "Other not economically active" category.

Youngsfield Monthly Household Income	Black African		Coloured		Asian		White		Other		Total	
	Num	%	Num	%	Num	%	Num	%	Num	%	Num	%
No income	3	14.3%	9	8.3%	0	0.0%	3	4.3%	0	0.0%	15	7.1%
R 1 - R 1 600	0	0.0%	3	2.8%	0	0.0%	0	0.0%	0	0.0%	3	1.4%
R 1 601 - R 3 200	3	14.3%	6	5.6%	0	0.0%	3	4.3%	0	0.0%	12	5.7%
R 3 201 - R 6 400	3	14.3%	6	5.6%	0	0.0%	9	13.0%	0	0.0%	18	8.6%
R 6 401 - R 12 800	6	28.6%	9	8.3%	3	25.0%	21	30.4%	0	0.0%	39	18.6%
R 12 801 - R 25 600	3	14.3%	21	19.4%	0	0.0%	15	21.7%	0	0.0%	39	18.6%
R 25 601 - R 51 200	0	0.0%	36	33.3%	3	25.0%	9	13.0%	0	0.0%	48	22.9%
R 51 201 - R 102 400	0	0.0%	15	13.9%	6	50.0%	6	8.7%	0	0.0%	27	12.9%
R 102 401 or more	3	14.3%	3	2.8%	0	0.0%	3	4.3%	0	0.0%	9	4.3%
Unspecified	0	0.0%	0	0.0%	0	0.0%	0	0.0%	0	0.0%	0	0.0%
<b>Total</b>	<b>21</b>	<b>100.0%</b>	<b>108</b>	<b>100.0%</b>	<b>12</b>	<b>100.0%</b>	<b>69</b>	<b>100.0%</b>	<b>0</b>	<b>0.0%</b>	<b>210</b>	<b>100.0%</b>

[Go to top of document](#)

## Dwelling Profile – 2011 Census

Youngsfield Type of Dwelling	Black African		Coloured		Asian		White		Other		Total	
	Num	%	Num	%	Num	%	Num	%	Num	%	Num	%
Formal Dwelling	18	100.0%	112	100.0%	10	100.0%	69	100.0%	2	100.0%	211	100.0%
Informal dwelling / shack in backyard	0	0.0%	0	0.0%	0	0.0%	0	0.0%	0	0.0%	0	0.0%
Informal dwelling / shack NOT in backyard	0	0.0%	0	0.0%	0	0.0%	0	0.0%	0	0.0%	0	0.0%
Other	0	0.0%	0	0.0%	0	0.0%	0	0.0%	0	0.0%	0	0.0%
Total	18	100.0%	112	100.0%	10	100.0%	69	100.0%	2	100.0%	211	100.0%

Youngsfield Tenure Status	Black African		Coloured		Asian		White		Other		Total	
	Num	%	Num	%	Num	%	Num	%	Num	%	Num	%
Owned and fully paid off	6	35.3%	18	15.9%	2	20.0%	44	64.7%	0	0.0%	70	33.3%
Owned but not yet paid off	1	5.9%	67	59.3%	8	80.0%	12	17.6%	2	100.0%	90	42.9%
Rented	8	47.1%	23	20.4%	0	0.0%	11	16.2%	0	0.0%	42	20.0%
Occupied rent-free	1	5.9%	3	2.7%	0	0.0%	0	0.0%	0	0.0%	4	1.9%
Other	1	5.9%	2	1.8%	0	0.0%	1	1.5%	0	0.0%	4	1.9%
Total	17	100.0%	113	100.0%	10	100.0%	68	100.0%	2	100.0%	210	100.0%

[Go to top of document](#)

## Household Services Profile – 2011 Census

Youngsfield Access to Piped Water	Black African		Coloured		Asian		White		Other		Total	
	Num	%	Num	%	Num	%	Num	%	Num	%	Num	%
Piped water inside dwelling	18	100.0%	111	100.0%	9	100.0%	69	100.0%	3	100.0%	210	100.0%
Piped water inside yard	0	0.0%	0	0.0%	0	0.0%	0	0.0%	0	0.0%	0	0.0%
Piped water outside yard: < 200m	0	0.0%	0	0.0%	0	0.0%	0	0.0%	0	0.0%	0	0.0%
Piped water outside yard: > 200m	0	0.0%	0	0.0%	0	0.0%	0	0.0%	0	0.0%	0	0.0%
No access to piped water	0	0.0%	0	0.0%	0	0.0%	0	0.0%	0	0.0%	0	0.0%
<b>Total</b>	<b>18</b>	<b>100.0%</b>	<b>111</b>	<b>100.0%</b>	<b>9</b>	<b>100.0%</b>	<b>69</b>	<b>100.0%</b>	<b>3</b>	<b>100.0%</b>	<b>210</b>	<b>100.0%</b>

Youngsfield Toilet Facility	Black African		Coloured		Asian		White		Other		Total	
	Num	%	Num	%	Num	%	Num	%	Num	%	Num	%
Flush toilet (connected to sewerage system)	18	100.0%	111	100.0%	9	100.0%	69	100.0%	3	100.0%	210	100.0%
Flush toilet (with septic tank)	0	0.0%	0	0.0%	0	0.0%	0	0.0%	0	0.0%	0	0.0%
Chemical toilet	0	0.0%	0	0.0%	0	0.0%	0	0.0%	0	0.0%	0	0.0%
Pit toilet with ventilation (VIP)	0	0.0%	0	0.0%	0	0.0%	0	0.0%	0	0.0%	0	0.0%
Pit toilet without ventilation	0	0.0%	0	0.0%	0	0.0%	0	0.0%	0	0.0%	0	0.0%
Bucket toilet	0	0.0%	0	0.0%	0	0.0%	0	0.0%	0	0.0%	0	0.0%
Other	0	0.0%	0	0.0%	0	0.0%	0	0.0%	0	0.0%	0	0.0%
None	0	0.0%	0	0.0%	0	0.0%	0	0.0%	0	0.0%	0	0.0%
<b>Total</b>	<b>18</b>	<b>100.0%</b>	<b>111</b>	<b>100.0%</b>	<b>9</b>	<b>100.0%</b>	<b>69</b>	<b>100.0%</b>	<b>3</b>	<b>100.0%</b>	<b>210</b>	<b>100.0%</b>

Youngsfield Refuse Disposal	Black African		Coloured		Asian		White		Other		Total	
	Num	%	Num	%	Num	%	Num	%	Num	%	Num	%
Removed by local authority/private company at least once a week	18	100.0%	111	100.0%	9	100.0%	69	100.0%	3	100.0%	210	100.0%
Removed by local authority/private company less often	0	0.0%	0	0.0%	0	0.0%	0	0.0%	0	0.0%	0	0.0%
Communal refuse dump	0	0.0%	0	0.0%	0	0.0%	0	0.0%	0	0.0%	0	0.0%
Own refuse dump	0	0.0%	0	0.0%	0	0.0%	0	0.0%	0	0.0%	0	0.0%
No rubbish disposal	0	0.0%	0	0.0%	0	0.0%	0	0.0%	0	0.0%	0	0.0%
Other	0	0.0%	0	0.0%	0	0.0%	0	0.0%	0	0.0%	0	0.0%
<b>Total</b>	<b>18</b>	<b>100.0%</b>	<b>111</b>	<b>100.0%</b>	<b>9</b>	<b>100.0%</b>	<b>69</b>	<b>100.0%</b>	<b>3</b>	<b>100.0%</b>	<b>210</b>	<b>100.0%</b>

[Go to top of document](#)

## Household Services Profile continued – 2011 Census

Youngsfield Energy used for Lighting	Black African		Coloured		Asian		White		Other		Total	
	Num	%	Num	%	Num	%	Num	%	Num	%	Num	%
Electricity	18	100.0%	111	100.0%	9	100.0%	69	100.0%	3	100.0%	210	100.0%
Gas	0	0.0%	0	0.0%	0	0.0%	0	0.0%	0	0.0%	0	0.0%
Paraffin	0	0.0%	0	0.0%	0	0.0%	0	0.0%	0	0.0%	0	0.0%
Candles	0	0.0%	0	0.0%	0	0.0%	0	0.0%	0	0.0%	0	0.0%
Solar	0	0.0%	0	0.0%	0	0.0%	0	0.0%	0	0.0%	0	0.0%
None	0	0.0%	0	0.0%	0	0.0%	0	0.0%	0	0.0%	0	0.0%
Total	18	100.0%	111	100.0%	9	100.0%	69	100.0%	3	100.0%	210	100.0%

Youngsfield Energy used for Cooking	Black African		Coloured		Asian		White		Other		Total	
	Num	%	Num	%	Num	%	Num	%	Num	%	Num	%
Electricity	15	100.0%	87	78.4%	6	50.0%	60	87.0%	3	100.0%	171	81.4%
Gas	0	0.0%	24	21.6%	6	50.0%	9	13.0%	0	0.0%	39	18.6%
Paraffin	0	0.0%	0	0.0%	0	0.0%	0	0.0%	0	0.0%	0	0.0%
Wood	0	0.0%	0	0.0%	0	0.0%	0	0.0%	0	0.0%	0	0.0%
Coal	0	0.0%	0	0.0%	0	0.0%	0	0.0%	0	0.0%	0	0.0%
Animal dung	0	0.0%	0	0.0%	0	0.0%	0	0.0%	0	0.0%	0	0.0%
Solar	0	0.0%	0	0.0%	0	0.0%	0	0.0%	0	0.0%	0	0.0%
Other	0	0.0%	0	0.0%	0	0.0%	0	0.0%	0	0.0%	0	0.0%
None	0	0.0%	0	0.0%	0	0.0%	0	0.0%	0	0.0%	0	0.0%
Total	15	100.0%	111	100.0%	12	100.0%	69	100.0%	3	100.0%	210	100.0%

Youngsfield Energy used for Heating	Black African		Coloured		Asian		White		Other		Total	
	Num	%	Num	%	Num	%	Num	%	Num	%	Num	%
Electricity	15	100.0%	102	91.9%	6	66.7%	57	82.6%	3	50.0%	183	87.1%
Gas	0	0.0%	6	5.4%	3	33.3%	6	8.7%	3	50.0%	18	8.6%
Paraffin	0	0.0%	0	0.0%	0	0.0%	0	0.0%	0	0.0%	0	0.0%
Wood	0	0.0%	3	2.7%	0	0.0%	3	4.3%	0	0.0%	6	2.9%
Coal	0	0.0%	0	0.0%	0	0.0%	0	0.0%	0	0.0%	0	0.0%
Animal dung	0	0.0%	0	0.0%	0	0.0%	0	0.0%	0	0.0%	0	0.0%
Solar	0	0.0%	0	0.0%	0	0.0%	3	4.3%	0	0.0%	3	1.4%
Other	0	0.0%	0	0.0%	0	0.0%	0	0.0%	0	0.0%	0	0.0%
None	0	0.0%	0	0.0%	0	0.0%	0	0.0%	0	0.0%	0	0.0%
Total	15	100.0%	111	100.0%	9	100.0%	69	100.0%	6	100.0%	210	100.0%

[Go to top of document](#)