

# City of Cape Town – 2011 Census – Klipfontein Health District

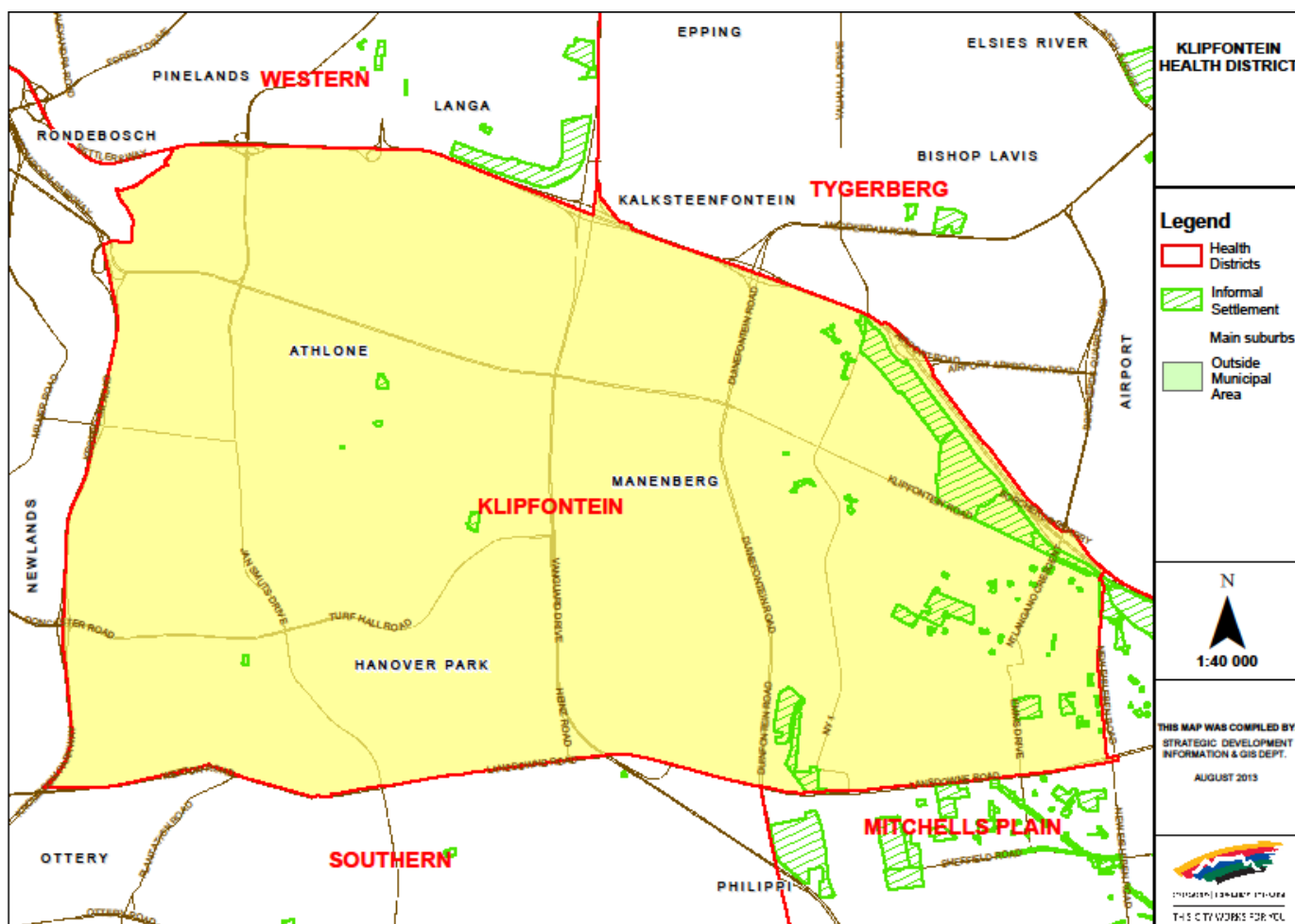
August 2013

Compiled by Strategic Development Information and GIS Department (SDI&GIS), City of Cape Town  
2011 Census data supplied by Statistics South Africa  
(Based on information available at the time of compilation as released by Statistics South Africa)

[Overview](#), [Demographic Profile](#), [Economic Profile](#), [Dwelling Profile](#), [Household Services Profile](#)

## Health District Description

The Klipfontein Health District, with an area of approximately 4 275 ha, is the smallest Health District. The district lies south of the N2 and east of the Kromboom Parkway. Wetton Road and Lansdowne Road form the southern boundary and New Eisleben Road is the eastern boundary.



**Data Notes:**

- The following databases from Statistics South Africa (SSA) software were used to extract the data for the profiles:  
Demographic Profile – Descriptive and Education databases  
Economic Profile – Labour Force and Head of Household databases  
Dwelling Profile – Dwellings database  
Household Services Profile – Household Services database

**Health District Overview – 2011 Census**

Klipfontein Health District	2001	2011	Change 2001 to 2011	
			Number	%
Population	344 486	384 189	39 703	11.5%
Households	79 888	97 125	17 237	21.6%
Average Household Size	4.31	3.96		

In 2011 the population of Klipfontein Health District was 384 189 an increase of 12% since 2001, and the number of households was 97 125, an increase of 22% since 2001. The average household size has declined from 4.31 to 3.96 in the 10 years.

A household is defined as a group of persons who live together, and provide themselves jointly with food or other essentials for living, or a single person who lives alone (Statistics South Africa).

The population and household numbers above are to be used and quoted as the official numbers for this Health District for 2011.

**Key results for Klipfontein Health District:**

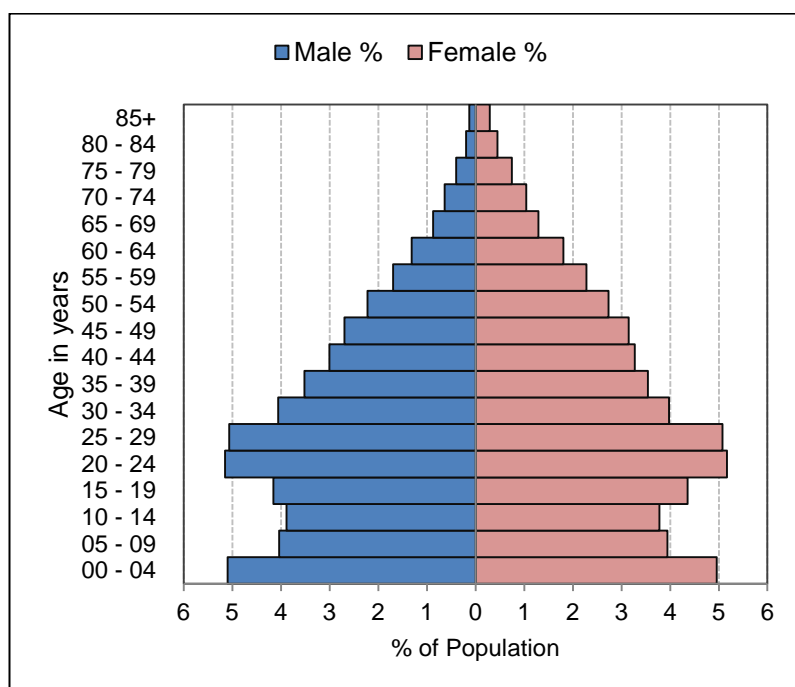
- The population is predominantly Coloured (49%) and Black African (45%).
- 37% of those aged 20 years and older have completed Grade 12 or higher.
- 68% of the labour force (aged 15 to 64) is employed.
- 59% of households have a monthly income of R3 200 or less.
- 76% of households live in formal dwellings.
- 83% of households have access to piped water in their dwelling or inside their yard.
- 83% of households have access to a flush toilet connected to the public sewer system.
- 95% of households have their refuse removed at least once a week.
- 98% of households use electricity for lighting in their dwelling.

**Note:** There are small variations in the total population and the number of households in the tables which follow. These occur as Statistics South Africa had to calculate the true population to correct omissions and double counts in the enumeration process. In addition when the data is extracted using the Statistics South Africa software, it randomly rounds off all cells to a base number 3, including the totals. These variations are not significant.

[Go to top of document](#)

## Demographic Profile – 2011 Census

Klipfontein Health District Population	Male		Female		Total	
	Num	%	Num	%	Num	%
Black African	83 741	21.8%	87 966	22.9%	171 707	44.7%
Coloured	88 087	22.9%	98 877	25.7%	186 964	48.7%
Asian	7 321	1.9%	7 225	1.9%	14 546	3.8%
White	1 386	0.4%	1 463	0.4%	2 849	0.7%
Other	4 438	1.2%	3 685	1.0%	8 123	2.1%
Total	184 973	48.1%	199 216	51.9%	384 189	100.0%



Klipfontein Health District Age	Black African		Coloured		Asian		White		Other		Total	
	Num	%	Num	%	Num	%	Num	%	Num	%	Num	%
0 to 4 years	19 378	11.3%	17 543	9.4%	944	6.5%	112	3.9%	670	8.2%	38 647	10.1%
5 to 14 years	25 737	15.0%	31 116	16.6%	1 849	12.7%	203	7.1%	1 227	15.1%	60 132	15.7%
15 to 24 years	33 928	19.8%	34 002	18.2%	2 591	17.8%	362	12.7%	1 466	18.0%	72 349	18.8%
25 to 64 years	86 222	50.2%	89 880	48.1%	7 948	54.6%	1 604	56.3%	4 140	51.0%	189 794	49.4%
65 years and older	6 440	3.8%	14 420	7.7%	1 213	8.3%	569	20.0%	621	7.6%	23 263	6.1%
Total	171 705	100.0%	186 961	100.0%	14 545	100.0%	2 850	100.0%	8 124	100.0%	384 185	100.0%

Klipfontein Health District Adult Education (for all aged 20+)	Black African		Coloured		Asian		White		Other		Total	
	Num	%	Num	%	Num	%	Num	%	Num	%	Num	%
No schooling	2 553	2.3%	1 680	1.4%	168	1.6%	18	0.8%	231	4.1%	4 650	1.9%
Some primary	10 488	9.4%	13 161	10.9%	519	4.9%	69	3.0%	342	6.1%	24 579	9.8%
Completed primary	4 983	4.5%	8 604	7.1%	303	2.9%	30	1.3%	222	3.9%	14 142	5.6%
Some secondary	52 791	47.5%	56 454	46.8%	2 301	21.8%	795	34.5%	1 926	34.2%	114 267	45.6%
Grade 12	32 913	29.6%	30 555	25.3%	4 038	38.2%	831	36.1%	1 860	33.0%	70 197	28.0%
Higher	7 083	6.4%	9 888	8.2%	3 144	29.7%	531	23.0%	981	17.4%	21 627	8.6%
Other	315	0.3%	354	0.3%	99	0.9%	30	1.3%	72	1.3%	870	0.3%
Total	111 126	100.0%	120 696	100.0%	10 572	100.0%	2 304	100.0%	5 634	100.0%	250 332	100.0%

[Go to top of document](#)

## Economic Profile – 2011 Census

Klipfontein Health District Labour Force Indicators	Black African	Coloured	Asian	White	Other	Total
<b>Population aged 15 to 64 years</b>	<b>120 156</b>	<b>123 888</b>	<b>10 539</b>	<b>1 965</b>	<b>5 604</b>	<b>262 152</b>
<b>Labour Force</b>	<b>76 317</b>	<b>70 191</b>	<b>6 375</b>	<b>1 263</b>	<b>3 798</b>	<b>157 944</b>
Employed	45 843	51 207	5 703	1 140	3 066	106 959
Unemployed	30 474	18 984	672	123	732	50 985
<b>Not Economically Active</b>	<b>43 839</b>	<b>53 697</b>	<b>4 164</b>	<b>702</b>	<b>1 806</b>	<b>104 208</b>
Discouraged Work-seekers	6 993	5 271	177	18	93	12 552
Other not economically active	36 846	48 426	3 987	684	1 713	91 656
<b>Rates %</b>						
Unemployment rate	39.93%	27.05%	10.54%	9.74%	19.27%	32.28%
Labour absorption rate	38.15%	41.33%	54.11%	58.02%	54.71%	40.80%
Labour Force participation rate	63.51%	56.66%	60.49%	64.27%	67.77%	60.25%

### Definitions:

**Unemployment rate** is the proportion of the labour force that is unemployed.

The **labour absorption rate** is the proportion of working age (15 to 64 years) population that is employed.

The **labour force participation rate** is the proportion of the working age population that is either employed or unemployed.

Klipfontein Health District Monthly Household Income	Black African		Coloured		Asian		White		Other		Total	
	Num	%	Num	%	Num	%	Num	%	Num	%	Num	%
No income	9 126	18.4%	4 494	10.9%	357	9.8%	75	7.4%	204	12.0%	14 256	14.7%
R 1 - R 1 600	14 478	29.2%	8 250	20.0%	294	8.1%	78	7.7%	258	15.2%	23 358	24.1%
R 1 601 - R 3 200	11 556	23.3%	7 071	17.1%	264	7.3%	117	11.5%	309	18.2%	19 317	19.9%
R 3 201 - R 6 400	7 725	15.6%	7 080	17.2%	414	11.4%	135	13.3%	276	16.3%	15 630	16.1%
R 6 401 - R 12 800	4 044	8.2%	5 886	14.3%	606	16.7%	189	18.6%	216	12.7%	10 941	11.3%
R 12 801 - R 25 600	1 701	3.4%	4 602	11.2%	747	20.6%	219	21.6%	210	12.4%	7 479	7.7%
R 25 601 - R 51 200	651	1.3%	2 805	6.8%	561	15.4%	144	14.2%	147	8.7%	4 308	4.4%
R 51 201 - R 102 400	141	0.3%	816	2.0%	273	7.5%	39	3.8%	57	3.4%	1 326	1.4%
R 102 401 or more	84	0.2%	261	0.6%	114	3.1%	18	1.8%	15	0.9%	492	0.5%
Unspecified	0	0.0%	3	0.0%	3	0.1%	0	0.0%	3	0.2%	9	0.0%
<b>Total</b>	<b>49 506</b>	<b>100.0%</b>	<b>41 268</b>	<b>100.0%</b>	<b>3 633</b>	<b>100.0%</b>	<b>1 014</b>	<b>100.0%</b>	<b>1 695</b>	<b>100.0%</b>	<b>97 116</b>	<b>100.0%</b>

[Go to top of document](#)

## Dwelling Profile – 2011 Census

Klipfontein Health District Type of Dwelling	Black African		Coloured		Asian		White		Other		Total	
	Num	%	Num	%	Num	%	Num	%	Num	%	Num	%
Formal Dwelling	29 451	59.5%	38 593	93.5%	3 578	98.5%	1 005	98.5%	1 488	87.8%	74 115	76.3%
Informal dwelling / shack in backyard	4 421	8.9%	1 665	4.0%	12	0.3%	5	0.5%	114	6.7%	6 217	6.4%
Informal dwelling / shack NOT in backyard	15 193	30.7%	411	1.0%	18	0.5%	4	0.4%	52	3.1%	15 678	16.1%
Other	429	0.9%	609	1.5%	24	0.7%	6	0.6%	40	2.4%	1 108	1.1%
<b>Total</b>	<b>49 494</b>	<b>100.0%</b>	<b>41 278</b>	<b>100.0%</b>	<b>3 632</b>	<b>100.0%</b>	<b>1 020</b>	<b>100.0%</b>	<b>1 694</b>	<b>100.0%</b>	<b>97 118</b>	<b>100.0%</b>

Klipfontein Health District Tenure Status	Black African		Coloured		Asian		White		Other		Total	
	Num	%	Num	%	Num	%	Num	%	Num	%	Num	%
Owned and fully paid off	19 283	39.0%	14 477	35.1%	1 380	38.0%	530	51.9%	429	25.3%	36 099	37.2%
Owned but not yet paid off	2 178	4.4%	7 447	18.0%	1 123	30.9%	283	27.7%	341	20.1%	11 372	11.7%
Rented	11 749	23.7%	17 598	42.6%	994	27.4%	172	16.8%	821	48.4%	31 334	32.3%
Occupied rent-free	13 968	28.2%	1 154	2.8%	64	1.8%	20	2.0%	62	3.7%	15 268	15.7%
Other	2 317	4.7%	602	1.5%	71	2.0%	16	1.6%	42	2.5%	3 048	3.1%
<b>Total</b>	<b>49 495</b>	<b>100.0%</b>	<b>41 278</b>	<b>100.0%</b>	<b>3 632</b>	<b>100.0%</b>	<b>1 021</b>	<b>100.0%</b>	<b>1 695</b>	<b>100.0%</b>	<b>97 121</b>	<b>100.0%</b>

[Go to top of document](#)

## Household Services Profile – 2011 Census

Klipfontein Health District Access to Piped Water	Black African		Coloured		Asian		White		Other		Total	
	Num	%	Num	%	Num	%	Num	%	Num	%	Num	%
Piped water inside dwelling	25 890	52.3%	38 733	93.8%	3 591	98.9%	1 014	99.1%	1 464	86.5%	70 692	72.8%
Piped water inside yard	7 725	15.6%	1 485	3.6%	21	0.6%	6	0.6%	171	10.1%	9 408	9.7%
Piped water outside yard: < 200m	11 610	23.5%	474	1.1%	9	0.2%	3	0.3%	30	1.8%	12 126	12.5%
Piped water outside yard: > 200m	3 915	7.9%	108	0.3%	3	0.1%	0	0.0%	12	0.7%	4 038	4.2%
No access to piped water	357	0.7%	483	1.2%	6	0.2%	0	0.0%	15	0.9%	861	0.9%
<b>Total</b>	<b>49 497</b>	<b>100.0%</b>	<b>41 283</b>	<b>100.0%</b>	<b>3 630</b>	<b>100.0%</b>	<b>1 023</b>	<b>100.0%</b>	<b>1 692</b>	<b>100.0%</b>	<b>97 125</b>	<b>100.0%</b>

Klipfontein Health District Toilet Facility	Black African		Coloured		Asian		White		Other		Total	
	Num	%	Num	%	Num	%	Num	%	Num	%	Num	%
Flush toilet (connected to sewerage system)	35 277	71.3%	38 820	94.1%	3 597	99.0%	1 014	99.7%	1 599	94.2%	80 307	82.7%
Flush toilet (with septic tank)	1 698	3.4%	399	1.0%	12	0.3%	0	0.0%	33	1.9%	2 142	2.2%
Chemical toilet	129	0.3%	93	0.2%	0	0.0%	0	0.0%	0	0.0%	222	0.2%
Pit toilet with ventilation (VIP)	78	0.2%	162	0.4%	3	0.1%	0	0.0%	3	0.2%	246	0.3%
Pit toilet without ventilation	105	0.2%	6	0.0%	0	0.0%	0	0.0%	0	0.0%	111	0.1%
Bucket toilet	10 353	20.9%	630	1.5%	9	0.2%	3	0.3%	39	2.3%	11 034	11.4%
Other	504	1.0%	372	0.9%	6	0.2%	0	0.0%	3	0.2%	885	0.9%
None	1 356	2.7%	792	1.9%	6	0.2%	0	0.0%	21	1.2%	2 175	2.2%
<b>Total</b>	<b>49 500</b>	<b>100.0%</b>	<b>41 274</b>	<b>100.0%</b>	<b>3 633</b>	<b>100.0%</b>	<b>1 017</b>	<b>100.0%</b>	<b>1 698</b>	<b>100.0%</b>	<b>97 122</b>	<b>100.0%</b>

Klipfontein Health District Refuse Disposal	Black African		Coloured		Asian		White		Other		Total	
	Num	%	Num	%	Num	%	Num	%	Num	%	Num	%
Removed by local authority/private company at least once a week	45 018	91.0%	40 881	99.0%	3 618	99.6%	1 017	99.4%	1 674	98.9%	92 208	94.9%
Removed by local authority/private company less often	717	1.4%	90	0.2%	3	0.1%	0	0.0%	3	0.2%	813	0.8%
Communal refuse dump	1 953	3.9%	222	0.5%	6	0.2%	3	0.3%	9	0.5%	2 193	2.3%
Own refuse dump	1 473	3.0%	18	0.0%	0	0.0%	0	0.0%	6	0.4%	1 497	1.5%
No rubbish disposal	210	0.4%	42	0.1%	3	0.1%	3	0.3%	0	0.0%	258	0.3%
Other	120	0.2%	24	0.1%	3	0.1%	0	0.0%	0	0.0%	147	0.2%
<b>Total</b>	<b>49 491</b>	<b>100.0%</b>	<b>41 277</b>	<b>100.0%</b>	<b>3 633</b>	<b>100.0%</b>	<b>1 023</b>	<b>100.0%</b>	<b>1 692</b>	<b>100.0%</b>	<b>97 116</b>	<b>100.0%</b>

[Go to top of document](#)

## Household Services Profile continued – 2011 Census

Klipfontein Health District Energy used for Lighting	Black African		Coloured		Asian		White		Other		Total	
	Num	%	Num	%	Num	%	Num	%	Num	%	Num	%
Electricity	47 760	96.5%	40 587	98.3%	3 609	99.4%	1 011	98.8%	1 671	98.9%	94 638	97.5%
Gas	87	0.2%	129	0.3%	6	0.2%	9	0.9%	3	0.2%	234	0.2%
Paraffin	735	1.5%	42	0.1%	3	0.1%	0	0.0%	0	0.0%	780	0.8%
Candles	615	1.2%	312	0.8%	0	0.0%	0	0.0%	9	0.5%	936	1.0%
Solar	54	0.1%	72	0.2%	9	0.2%	3	0.3%	0	0.0%	138	0.1%
None	240	0.5%	135	0.3%	3	0.1%	0	0.0%	6	0.4%	384	0.4%
Total	49 491	100.0%	41 277	100.0%	3 630	100.0%	1 023	100.0%	1 689	100.0%	97 110	100.0%

Klipfontein Health District Energy used for Cooking	Black African		Coloured		Asian		White		Other		Total	
	Num	%	Num	%	Num	%	Num	%	Num	%	Num	%
Electricity	46 134	93.2%	37 035	89.7%	2 751	75.8%	903	88.3%	1 413	83.5%	88 236	90.9%
Gas	1 266	2.6%	3 537	8.6%	858	23.6%	111	10.9%	249	14.7%	6 021	6.2%
Paraffin	1 551	3.1%	60	0.1%	0	0.0%	3	0.3%	6	0.4%	1 620	1.7%
Wood	54	0.1%	153	0.4%	6	0.2%	3	0.3%	0	0.0%	216	0.2%
Coal	15	0.0%	39	0.1%	0	0.0%	0	0.0%	3	0.2%	57	0.1%
Animal dung	21	0.0%	15	0.0%	0	0.0%	0	0.0%	3	0.2%	39	0.0%
Solar	66	0.1%	69	0.2%	3	0.1%	3	0.3%	0	0.0%	141	0.1%
Other	57	0.1%	207	0.5%	9	0.2%	0	0.0%	9	0.5%	282	0.3%
None	327	0.7%	156	0.4%	3	0.1%	0	0.0%	9	0.5%	495	0.5%
Total	49 491	100.0%	41 271	100.0%	3 630	100.0%	1 023	100.0%	1 692	100.0%	97 107	100.0%

Klipfontein Health District Energy used for Heating	Black African		Coloured		Asian		White		Other		Total	
	Num	%	Num	%	Num	%	Num	%	Num	%	Num	%
Electricity	18 489	37.4%	34 896	84.5%	3 018	83.1%	813	79.7%	1 152	68.1%	58 368	60.1%
Gas	1 314	2.7%	948	2.3%	225	6.2%	54	5.3%	63	3.7%	2 604	2.7%
Paraffin	18 969	38.3%	297	0.7%	21	0.6%	9	0.9%	96	5.7%	19 392	20.0%
Wood	93	0.2%	348	0.8%	39	1.1%	21	2.1%	18	1.1%	519	0.5%
Coal	93	0.2%	48	0.1%	6	0.2%	0	0.0%	3	0.2%	150	0.2%
Animal dung	27	0.1%	12	0.0%	3	0.1%	0	0.0%	3	0.2%	45	0.0%
Solar	48	0.1%	99	0.2%	24	0.7%	6	0.6%	6	0.4%	183	0.2%
Other	6	0.0%	6	0.0%	0	0.0%	0	0.0%	0	0.0%	12	0.0%
None	10 458	21.1%	4 629	11.2%	297	8.2%	117	11.5%	351	20.7%	15 852	16.3%
Total	49 497	100.0%	41 283	100.0%	3 633	100.0%	1 020	100.0%	1 692	100.0%	97 125	100.0%

[Go to top of document](#)