

City of Cape Town – 2011 Census - Mitchells Plain/ Khayelitsha Planning District

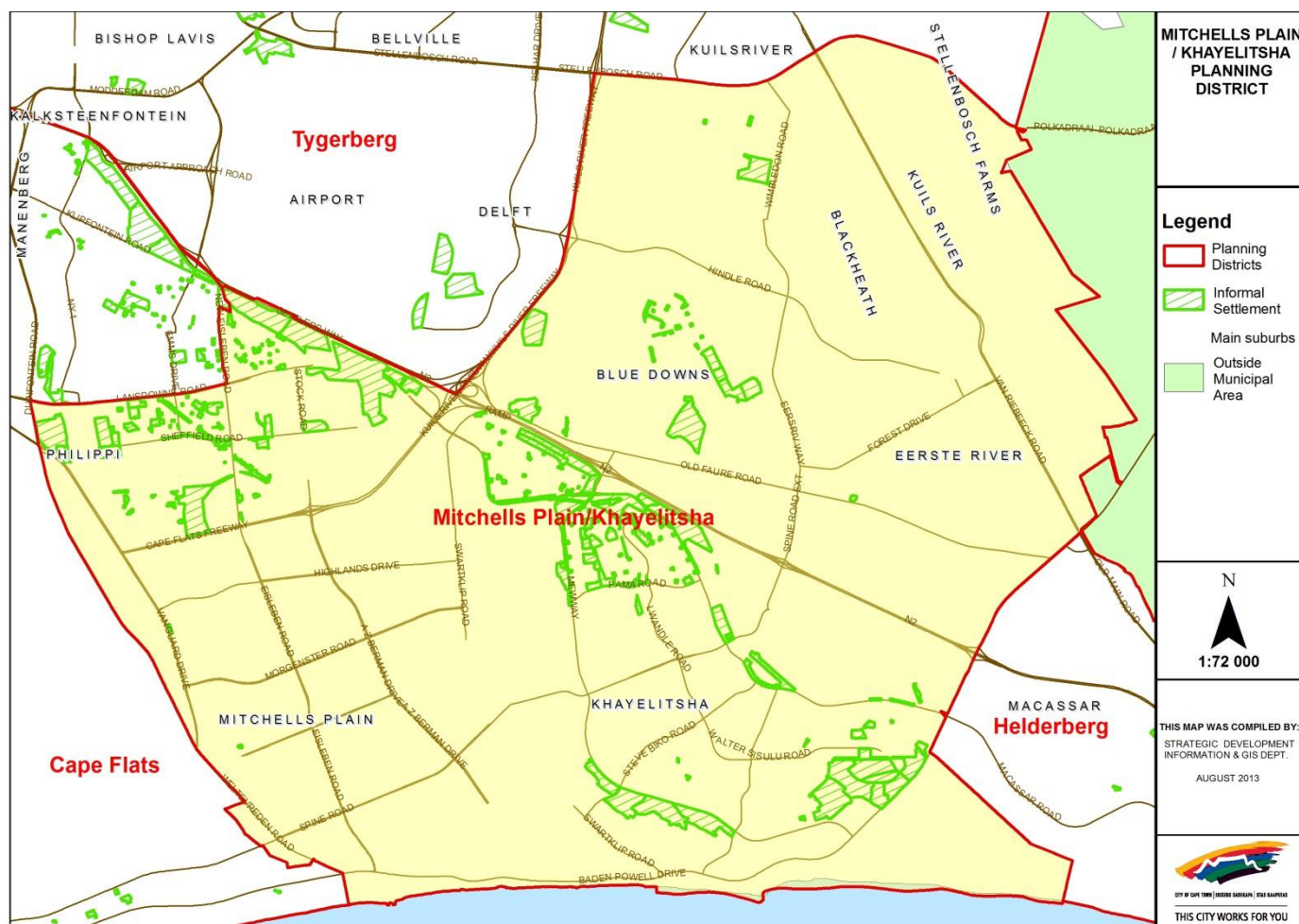
August 2013

Compiled by Strategic Development Information and GIS Department (SDI&GIS), City of Cape Town
2011 Census data supplied by Statistics South Africa
(Based on information available at the time of compilation as released by Statistics South Africa)

[Overview](#), [Demographic Profile](#), [Economic Profile](#), [Dwelling Profile](#), [Household Services Profile](#)

Planning District Description

The Mitchells Plain/Khayelitsha Planning District covers approximately 16 000 ha. The district includes Khayelitsha, Mitchells Plain, Blue Downs, Blackheath and Eersterivier and is bounded by the R300, the Stellenbosch Arterial, Baden Powell Drive, Vanguard Drive and sections of Lansdowne Road, New Eisleben Road and the N2.



Data Notes:

- The following databases from Statistics South Africa (SSA) software were used to extract the data for the profiles:
Demographic Profile – Descriptive and Education databases
Economic Profile – Labour Force and Head of Household databases
Dwelling Profile – Dwellings database
Household Services Profile – Household Services database

Planning District Overview - 2011 Census

Mitchells Plain/ Khayelitsha Planning District	2001	2011	Change 2001 to 2011	
			Number	%
Population	872 425	1 112 650	240 225	27.5%
Households	215 860	307 439	91 579	42.4%
Average Household Size	4.04	3.62		

In 2011 the population of Mitchells Plain/ Khayelitsha Planning District was 1 112 650 an increase of 28% since 2001, and the number of households was 307 439, an increase of 42% since 2001. The average household size has declined from 4.04 to 3.62 in the 10 years.

A household is defined as a group of persons who live together, and provide themselves jointly with food or other essentials for living, or a single person who lives alone (Statistics South Africa).

The population and household numbers above are to be used and quoted as the official numbers for this Planning District for 2011.

Key results for Mitchells Plain/ Khayelitsha Planning District:

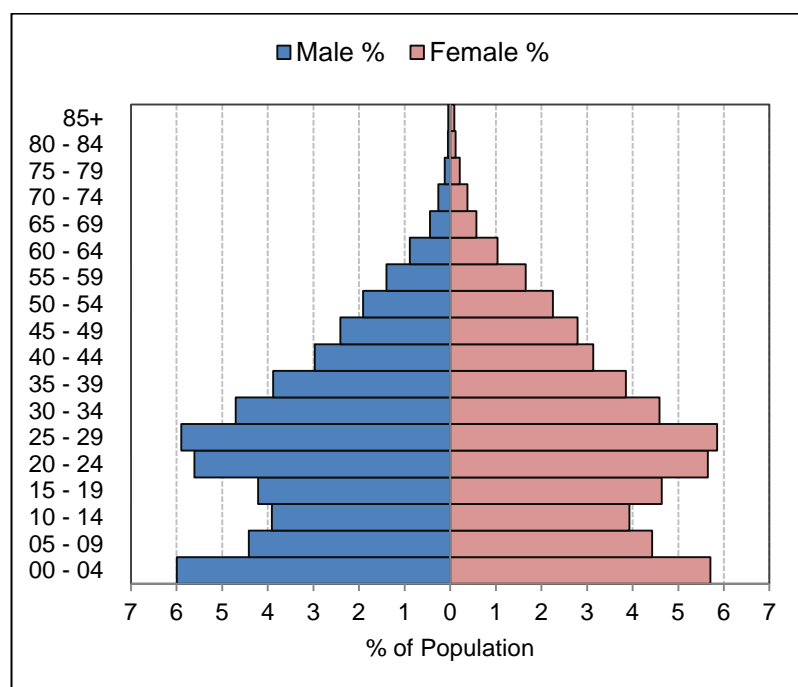
- The population is predominantly Black African (64%) and Coloured (35%).
- 34% of those aged 20 years and older have completed Grade 12 or higher.
- 67% of the labour force (aged 15 to 64) is employed.
- 64% of households have a monthly income of R3 200 or less.
- 60% of households live in formal dwellings.
- 75% of households have access to piped water in their dwelling or inside their yard.
- 80% of households have access to a flush toilet connected to the public sewer system.
- 88% of households have their refuse removed at least once a week.
- 88% of households use electricity for lighting in their dwelling.

Note: There are small variations in the total population and the number of households in the tables which follow. These occur as Statistics South Africa had to calculate the true population to correct omissions and double counts in the enumeration process. In addition when the data is extracted using the Statistics South Africa software, it randomly rounds off all cells to a base number 3, including the totals. These variations are not significant.

[Go to top of document](#)

Demographic Profile – 2011 Census

Mitchells Plain/ Khayelitsha Planning District Population	Male		Female		Total	
	Num	%	Num	%	Num	%
Black African	347 765	31.3%	358 492	32.2%	706 257	63.5%
Coloured	188 603	17.0%	201 804	18.1%	390 407	35.1%
Asian	1 639	0.1%	1 374	0.1%	3 013	0.3%
White	1 532	0.1%	1 371	0.1%	2 903	0.3%
Other	7 027	0.6%	3 044	0.3%	10 071	0.9%
Total	546 566	49.1%	566 085	50.9%	1 112 651	100.0%



Mitchells Plain/ Khayelitsha Planning District Age	Black African		Coloured		Asian		White		Other		Total	
	Num	%	Num	%	Num	%	Num	%	Num	%	Num	%
0 to 4 years	87 327	12.4%	41 412	10.6%	318	10.6%	201	6.9%	915	9.1%	130 173	11.7%
5 to 14 years	115 029	16.3%	68 937	17.7%	459	15.3%	342	11.8%	879	8.7%	185 646	16.7%
15 to 24 years	147 468	20.9%	72 792	18.6%	624	20.7%	402	13.9%	2 493	24.7%	223 779	20.1%
25 to 64 years	345 780	49.0%	192 936	49.4%	1 503	50.0%	1 749	60.4%	5 664	56.2%	547 632	49.2%
65 years and older	10 662	1.5%	14 331	3.7%	105	3.5%	204	7.0%	126	1.3%	25 428	2.3%
Total	706 266	100.0%	390 408	100.0%	3 009	100.0%	2 898	100.0%	10 077	100.0%	1 112 658	100.0%

Mitchells Plain/ Khayelitsha Planning District Adult Education (for all aged 20+)	Black African		Coloured		Asian		White		Other		Total	
	Num	%	Num	%	Num	%	Num	%	Num	%	Num	%
No schooling	11 958	2.7%	3 417	1.4%	51	2.7%	36	1.9%	792	10.5%	16 254	2.3%
Some primary	43 572	9.9%	24 600	10.1%	165	8.7%	54	2.8%	621	8.2%	69 012	9.9%
Completed primary	19 971	4.5%	16 956	7.0%	84	4.4%	36	1.9%	333	4.4%	37 380	5.4%
Some secondary	209 265	47.5%	120 036	49.4%	774	40.8%	531	27.8%	2 967	39.2%	333 573	48.0%
Grade 12	131 733	29.9%	66 429	27.3%	600	31.6%	606	31.7%	2 274	30.1%	201 642	29.0%
Higher	23 037	5.2%	10 848	4.5%	192	10.1%	627	32.8%	432	5.7%	35 136	5.1%
Other	822	0.2%	633	0.3%	30	1.6%	21	1.1%	147	1.9%	1 653	0.2%
Total	440 358	100.0%	242 919	100.0%	1 896	100.0%	1 911	100.0%	7 566	100.0%	694 650	100.0%

[Go to top of document](#)

Economic Profile – 2011 Census

Mitchells Plain/ Khayelitsha Planning District Labour Force Indicators	Black African	Coloured	Asian	White	Other	Total
Population aged 15 to 64 years	493 248	265 728	2 130	2 160	8 151	771 417
Labour Force	325 410	162 843	1 362	1 383	6 303	497 301
Employed	202 542	121 605	1 065	1 194	5 148	331 554
Unemployed	122 868	41 238	297	189	1 155	165 747
Not Economically Active	167 838	102 885	768	777	1 848	274 116
Discouraged Work-seekers	20 694	9 348	51	24	177	30 294
Other not economically active	147 144	93 537	717	753	1 671	243 822
Rates %						
Unemployment rate	37.76%	25.32%	21.81%	13.67%	18.32%	33.33%
Labour absorption rate	41.06%	45.76%	50.00%	55.28%	63.16%	42.98%
Labour Force participation rate	65.97%	61.28%	63.94%	64.03%	77.33%	64.47%

Definitions:

Unemployment rate is the proportion of the labour force that is unemployed.

The **labour absorption rate** is the proportion of working age (15 to 64 years) population that is employed.

The **labour force participation rate** is the proportion of the working age population that is either employed or unemployed.

Mitchells Plain/ Khayelitsha Planning District Monthly Household Income	Black African		Coloured		Asian		White		Other		Total	
	Num	%	Num	%	Num	%	Num	%	Num	%	Num	%
No income	42 054	19.2%	8 968	10.6%	101	14.4%	84	9.5%	438	16.3%	51 645	16.8%
R 1 - R 1 600	65 620	30.0%	12 031	14.3%	121	17.2%	84	9.5%	614	22.9%	78 470	25.5%
R 1 601 - R 3 200	54 027	24.7%	13 276	15.8%	99	14.1%	78	8.8%	600	22.3%	68 080	22.1%
R 3 201 - R 6 400	31 968	14.6%	17 432	20.7%	123	17.5%	95	10.7%	568	21.1%	50 186	16.3%
R 6 401 - R 12 800	15 235	7.0%	16 911	20.1%	131	18.7%	121	13.6%	263	9.8%	32 661	10.6%
R 12 801 - R 25 600	6 832	3.1%	11 257	13.4%	70	10.0%	164	18.5%	133	4.9%	18 456	6.0%
R 25 601 - R 51 200	2 606	1.2%	3 734	4.4%	47	6.7%	141	15.9%	56	2.1%	6 584	2.1%
R 51 201 - R 102 400	309	0.1%	370	0.4%	7	1.0%	82	9.2%	7	0.3%	775	0.3%
R 102 401 or more	303	0.1%	231	0.3%	3	0.4%	38	4.3%	8	0.3%	583	0.2%
Unspecified	1	0.0%	1	0.0%	0	0.0%	0	0.0%	0	0.0%	2	0.0%
Total	218 955	100.0%	84 211	100.0%	702	100.0%	887	100.0%	2 687	100.0%	307 442	100.0%

[Go to top of document](#)

Dwelling Profile – 2011 Census

Mitchells Plain/ Khayelitsha Planning District Type of Dwelling	Black African		Coloured		Asian		White		Other		Total	
	Num	%	Num	%	Num	%	Num	%	Num	%	Num	%
Formal Dwelling	103 564	47.3%	78 007	92.6%	601	85.2%	786	88.6%	1 731	64.4%	184 689	60.1%
Informal dwelling / shack in backyard	26 323	12.0%	4 058	4.8%	43	6.1%	32	3.6%	526	19.6%	30 982	10.1%
Informal dwelling / shack NOT in backyard	87 200	39.8%	1 274	1.5%	41	5.8%	58	6.5%	335	12.5%	88 908	28.9%
Other	1 870	0.9%	870	1.0%	20	2.8%	11	1.2%	95	3.5%	2 866	0.9%
Total	218 957	100.0%	84 209	100.0%	705	100.0%	887	100.0%	2 687	100.0%	307 445	100.0%

Mitchells Plain/ Khayelitsha Planning District Tenure Status	Black African		Coloured		Asian		White		Other		Total	
	Num	%	Num	%	Num	%	Num	%	Num	%	Num	%
Owned and fully paid off	95 208	43.5%	30 754	36.5%	208	29.5%	261	29.5%	405	15.1%	126 836	41.3%
Owned but not yet paid off	16 765	7.7%	33 054	39.3%	174	24.7%	302	34.1%	217	8.1%	50 512	16.4%
Rented	35 364	16.2%	15 128	18.0%	266	37.8%	255	28.8%	1 831	68.1%	52 844	17.2%
Occupied rent-free	62 176	28.4%	3 666	4.4%	47	6.7%	53	6.0%	156	5.8%	66 098	21.5%
Other	9 442	4.3%	1 608	1.9%	9	1.3%	15	1.7%	78	2.9%	11 152	3.6%
Total	218 955	100.0%	84 210	100.0%	704	100.0%	886	100.0%	2 687	100.0%	307 442	100.0%

[Go to top of document](#)

Household Services Profile – 2011 Census

Mitchells Plain/ Khayelitsha Planning District Access to Piped Water	Black African		Coloured		Asian		White		Other		Total	
	Num	%	Num	%	Num	%	Num	%	Num	%	Num	%
Piped water inside dwelling	79 788	36.4%	77 385	91.9%	576	82.1%	765	86.1%	1 509	56.1%	160 023	52.1%
Piped water inside yard	65 145	29.8%	5 055	6.0%	81	11.5%	69	7.8%	918	34.2%	71 268	23.2%
Piped water outside yard: < 200m	55 764	25.5%	783	0.9%	33	4.7%	36	4.1%	204	7.6%	56 820	18.5%
Piped water outside yard: > 200m	16 527	7.5%	327	0.4%	9	1.3%	12	1.4%	45	1.7%	16 920	5.5%
No access to piped water	1 734	0.8%	654	0.8%	3	0.4%	6	0.7%	12	0.4%	2 409	0.8%
Total	218 958	100.0%	84 204	100.0%	702	100.0%	888	100.0%	2 688	100.0%	307 440	100.0%

Mitchells Plain/ Khayelitsha Planning District Toilet Facility	Black African		Coloured		Asian		White		Other		Total	
	Num	%	Num	%	Num	%	Num	%	Num	%	Num	%
Flush toilet (connected to sewerage system)	164 331	75.1%	79 080	93.9%	648	93.1%	669	75.6%	2 391	89.1%	247 119	80.4%
Flush toilet (with septic tank)	8 130	3.7%	738	0.9%	12	1.7%	165	18.6%	93	3.5%	9 138	3.0%
Chemical toilet	6 762	3.1%	159	0.2%	3	0.4%	6	0.7%	21	0.8%	6 951	2.3%
Pit toilet with ventilation (VIP)	1 260	0.6%	63	0.1%	0	0.0%	0	0.0%	6	0.2%	1 329	0.4%
Pit toilet without ventilation	810	0.4%	75	0.1%	0	0.0%	0	0.0%	3	0.1%	888	0.3%
Bucket toilet	19 011	8.7%	1 764	2.1%	9	1.3%	30	3.4%	78	2.9%	20 892	6.8%
Other	4 245	1.9%	810	1.0%	6	0.9%	3	0.3%	36	1.3%	5 100	1.7%
None	14 406	6.6%	1 518	1.8%	18	2.6%	12	1.4%	57	2.1%	16 011	5.2%
Total	218 955	100.0%	84 207	100.0%	696	100.0%	885	100.0%	2 685	100.0%	307 428	100.0%

Mitchells Plain/ Khayelitsha Planning District Refuse Disposal	Black African		Coloured		Asian		White		Other		Total	
	Num	%	Num	%	Num	%	Num	%	Num	%	Num	%
Removed by local authority/private company at least once a week	182 178	83.2%	83 361	99.0%	690	97.9%	858	97.3%	2 553	95.0%	269 640	87.7%
Removed by local authority/private company less often	3 057	1.4%	132	0.2%	0	0.0%	3	0.3%	12	0.4%	3 204	1.0%
Communal refuse dump	20 334	9.3%	195	0.2%	6	0.9%	15	1.7%	69	2.6%	20 619	6.7%
Own refuse dump	7 875	3.6%	264	0.3%	3	0.4%	6	0.7%	42	1.6%	8 190	2.7%
No rubbish disposal	4 731	2.2%	153	0.2%	6	0.9%	0	0.0%	9	0.3%	4 899	1.6%
Other	789	0.4%	108	0.1%	0	0.0%	0	0.0%	3	0.1%	900	0.3%
Total	218 964	100.0%	84 213	100.0%	705	100.0%	882	100.0%	2 688	100.0%	307 452	100.0%

[Go to top of document](#)

Household Services Profile continued – 2011 Census

Mitchells Plain/ Khayelitsha Planning District Energy used for Lighting	Black African		Coloured		Asian		White		Other		Total	
	Num	%	Num	%	Num	%	Num	%	Num	%	Num	%
Electricity	182 493	83.3%	83 289	98.9%	684	97.0%	855	96.6%	2 601	96.7%	269 922	87.8%
Gas	936	0.4%	129	0.2%	3	0.4%	0	0.0%	6	0.2%	1 074	0.3%
Paraffin	27 429	12.5%	153	0.2%	12	1.7%	18	2.0%	54	2.0%	27 666	9.0%
Candles	7 152	3.3%	261	0.3%	0	0.0%	9	1.0%	18	0.7%	7 440	2.4%
Solar	423	0.2%	159	0.2%	0	0.0%	3	0.3%	6	0.2%	591	0.2%
None	534	0.2%	216	0.3%	6	0.9%	0	0.0%	6	0.2%	762	0.2%
Total	218 967	100.0%	84 207	100.0%	705	100.0%	885	100.0%	2 691	100.0%	307 455	100.0%

Mitchells Plain/ Khayelitsha Planning District Energy used for Cooking	Black African		Coloured		Asian		White		Other		Total	
	Num	%	Num	%	Num	%	Num	%	Num	%	Num	%
Electricity	173 241	79.1%	80 745	95.9%	618	87.7%	711	80.1%	2 487	92.5%	257 802	83.9%
Gas	18 981	8.7%	2 676	3.2%	66	9.4%	153	17.2%	120	4.5%	21 996	7.2%
Paraffin	25 122	11.5%	198	0.2%	12	1.7%	18	2.0%	60	2.2%	25 410	8.3%
Wood	282	0.1%	135	0.2%	0	0.0%	0	0.0%	3	0.1%	420	0.1%
Coal	135	0.1%	30	0.0%	0	0.0%	0	0.0%	0	0.0%	165	0.1%
Animal dung	168	0.1%	15	0.0%	0	0.0%	0	0.0%	0	0.0%	183	0.1%
Solar	318	0.1%	138	0.2%	6	0.9%	3	0.3%	6	0.2%	471	0.2%
Other	72	0.0%	36	0.0%	0	0.0%	0	0.0%	0	0.0%	108	0.0%
None	639	0.3%	237	0.2%	3	0.4%	3	0.3%	12	0.4%	894	0.3%
Total	218 958	100.0%	84 210	100.0%	705	100.0%	888	100.0%	2 688	100.0%	307 449	100.0%

Mitchells Plain/ Khayelitsha Planning District Energy used for Heating	Black African		Coloured		Asian		White		Other		Total	
	Num	%	Num	%	Num	%	Num	%	Num	%	Num	%
Electricity	57 462	26.2%	71 106	84.4%	510	72.6%	591	67.0%	1 473	54.7%	131 142	42.7%
Gas	6 669	3.0%	723	0.9%	12	1.7%	57	6.5%	48	1.8%	7 509	2.4%
Paraffin	104 319	47.6%	543	0.6%	54	7.7%	72	8.2%	402	14.9%	105 390	34.3%
Wood	1 269	0.6%	651	0.8%	6	0.9%	66	7.5%	18	0.7%	2 010	0.7%
Coal	516	0.2%	48	0.1%	0	0.0%	0	0.0%	3	0.1%	567	0.2%
Animal dung	162	0.1%	51	0.1%	0	0.0%	0	0.0%	3	0.1%	216	0.1%
Solar	510	0.2%	195	0.2%	3	0.4%	6	0.7%	9	0.3%	723	0.2%
Other	3	0.0%	0	0.0%	0	0.0%	0	0.0%	0	0.0%	3	0.0%
None	48 042	21.9%	10 884	12.9%	117	16.7%	90	10.2%	735	27.3%	59 868	19.5%
Total	218 952	100.0%	84 201	100.0%	702	100.0%	882	100.0%	2 691	100.0%	307 428	100.0%

[Go to top of document](#)