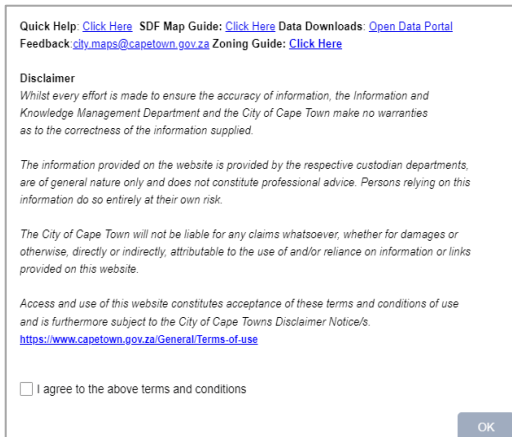




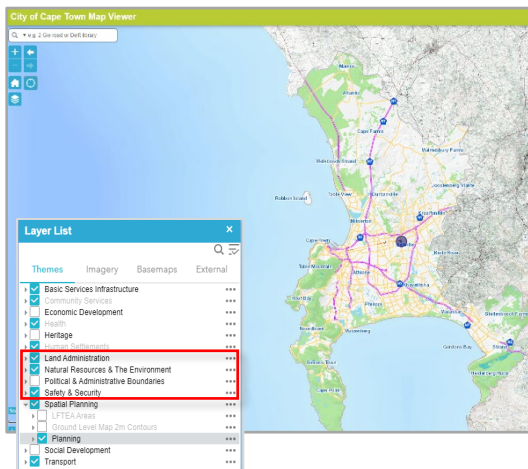
# City Map Viewer Navigation Guide

## Draft Incentive Overlay Zone (IOZ)

This document provides an overview on how to use City Map viewer for the draft Incentive Overlay Zones (Athlone, Bellville, Diep River, Parow/Elsies and Maitland)

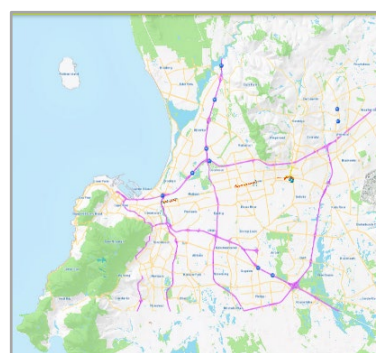
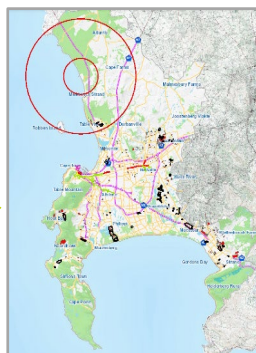
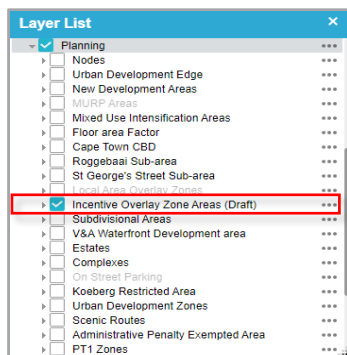


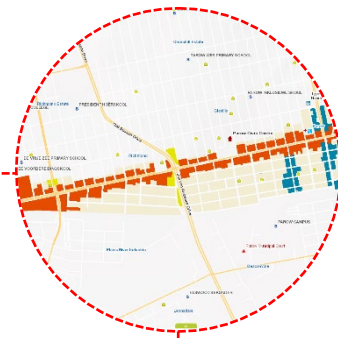
**Step 1:** Open the [City of Cape Town Map Viewer](#). A disclaimer tab will pop up on your screen. To continue, you must agree to the terms and conditions by selecting the small box, then press 'OK'.



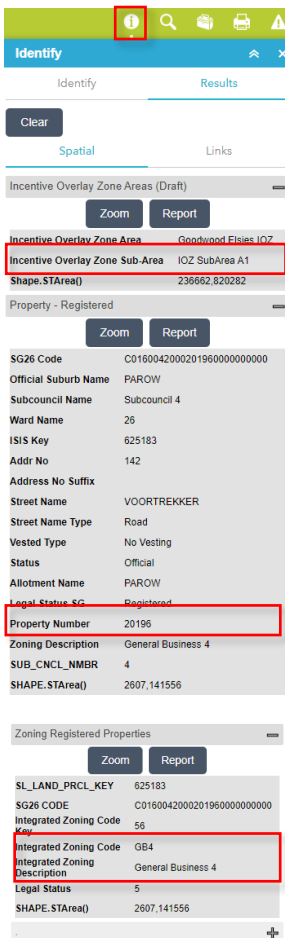
**Step 2:** After pressing 'OK' the City of Cape Town Map Viewer interface should appear with a layer list on the far left, just above the scale.


**Step 3:** In the layer list, navigate to 'Spatial Planning' click on the drop down arrow and check 'Planning'. After checking planning, click on the drop down arrow and a few layers will appear. It is advisable to switch off all layers and only leave the 'Incentive Overlay Zone Areas (Draft)' layer on to avoid confusion





**Step 4:** Zoom into any one of the five Incentive Overlay Zone areas to a scale of about **1:1500** to view the affected properties.



**Step 5:** To view information about a specific property, click on the identify tool  and navigate to the specific property that you want information for on the map.

The **IOZ Sub-Area** of the property appears under the 'Incentive Overlay Zone Area (Draft)' results tab.

Information such as **property number and ISIS key and suburb name** will be appear under the 'Property - Registered' results tab.

The **Zoning Code and Zoning Description** of the property will appear under the 'Zoning Registered Properties' result tab.

