

Chapter 16: Coastal Recreational Use Zones

1. Introduction

With over 240km of highly varied coastline as part of an urban area with a population exceeding 3.5 million people, coastal recreation is one of the most important social assets that the coast holds for Cape Town. Cape Town's coastline is highly varied with in-excess of 48 sandy beaches, interspersed with rocky shoreline, calm protected bays, wide sandy beaches and varied swell and wind conditions. This in conjunction with an ever increasing variety and popularity of new water sports places Cape Town as a global centre of coastal recreation. The wide diversity and quality of coastal recreation on Cape Town's coastline is one of the core drivers of the tourism sector and Cape Town's desirability as coastal city for international and national visitors. The number, types and diversity of coastal recreation has grown substantially over the last 15 years and includes amongst others:

- Surfing and body boarding
- Stand Up Paddle Boarding
- Kite Surfing
- Kayaking and Surfskiing
- General swimming
- Beach activities (sunbathing, volley ball, Frisbee, ball sports)
- Recreational fishing
- Sand Yachting
- Scuba diving
- Lifesaving training and competitions
- Jetskiing
- Motorised Watercraft
- Sailing (all forms)
- Windsurfing
- Spear fishing
- Open water swimming

2. Issue

With the increasing number of recreational users as well as forms of recreation, safety considerations for the general public visiting the coastline is at the core of use zone considerations. In addition the potential for conflict between user groups is growing as a result of the increasing forms of recreation competing for the same coastal space.

3. General Principles

- a) The coastline is a common space belonging to all. Regulation and control of recreation types should only be done when necessary where public safety, nuisance or conflict are factors
- b) Access to the coastline for recreation must remain unrestricted and free wherever possible and practical
- c) A common principle of a shared space, consideration and care must be entrenched in all user groups
- d) Coastal recreation in all its forms should be encouraged

- e) Fair and reasonable space (use zones) must be provided for those activities that may present safety concerns to the general public, or are considered possible nuisance factors
- f) The “common good” should be the defining factor if and when choices are to be made
- g) Coastal recreation is strictly at the users own risk

4. Use Zones: Restrictions and Regulations

4.1. Surfing and bodyboarding

Unrestricted access across the coastline but not permitted in the following areas:

- Formal Blue Flag Beaches
- In any area designated as a defined swimming area for safety reasons by lifesaving flags during official lifesaving operations or by City officials
- Between the Law Enforcement Hut and Jaeggars Walk at Fish Hoek Beach

4.2. Stand Up Paddle Boarding

Unrestricted access across the coastline but not permitted in the following areas:

- Formal Blue Flag Beaches
- In any area designated as a defined swimming area for safety reasons by lifesaving flags or by City officials
- Between the Law Enforcement Hut and Jaeggars Walk at Fish Hoek Beach

4.3. Kite Surfing and windsurfing

Unrestricted access across the coastline but not permitted in the following areas:

- All Blue Flag Beaches
- Silwerstroomstrand Resort within 200m of shorebreak
- Melkbos main beach (see aerial photograph) within 500m of shorebreak
- Big Bay main beach within 200m of shorebreak
- Small Bay beach
- Clifton beaches 1- 4
- Glen Beach
- Camps Bay Beach within 200m of shorebreak
- Llandudno Beach
- Seaforth beach
- Between the Law Enforcement Hut and Jaeggars Walk at Fish Hoek Beach
- Between Muizenberg Corner and Zandvlei Mouth
- Strandfontein Pavilion
- Mnandi
- Blue Waters Resort
- Monwabisi Resort

- East of the lifesaving club on Strand Beach
- Gordon's Bay Beach
- Bikini Beach

4.4. Kayaking and Surfskiing

Unrestricted launch and land access across the coastline but not permitted in the following areas:

- All Blue Flag Beaches
- Between the Law Enforcement Hut and Jaeggars Walk at Fish Hoek Beach
- At Seaforth beach in accordance with the demarcated area
- In any area designated as a defined swimming area for safety reasons by lifesaving flags

4.5. General Swimming

Unrestricted access across the coastline except:

- Where health warnings are posted due to pollution events
- Closure of areas by official lifesaving demarcation on dangerous areas due to strong currents or wave action
- Where swimming threatens or interferes with protected species

4.6. General Beach Activities

Includes all ball games, Frisbee etc.

- Unrestricted access with due consideration for others
- Beach Managers may restrict activities at certain beaches as the need arises

4.7. Recreational Fishing

Unrestricted access for recreational fishing with associated valid permit except:

- At any recognised beach recreational nodal point including:
 - Silwerstroomstrand
 - Melkbos
 - Big Bay
 - Small Bay
 - Tableview beach front
 - Milnerton beach front
 - Sea Point Promenade
 - Clifton (1-4)
 - Glen Beach
 - Camps Bay
 - Llandudno
 - Hout Bay beach
 - Long Beach Kommetjie
 - Glencairn beach
 - Fish Hoek Beach

- St James beach
- Muizenberg Corner
- Strandfontein Pavilion
- Mnandi
- Blue Waters
- Monwabisi
- Strand beach front
- Gordon's Bay Beach
- Bikini Beach
- "The Caves" Kogel Bay

4.8. Sand Yachting

Sand Yachting is only permitted in the following demarcated areas (Annexure A):

- Zonwabe and Cemetery Beach
- Duynefontein

4.9. Scuba Diving

Unrestricted across the coastline with the following conditions:

- Boat based scuba diving must make use of a registered and licensed slipway or launch site

4.10. Lifesaving training and competitions

Unrestricted across the coastline with the following conditions:

- When using paddle boards, surfing restrictions listed in (1) above apply
- Any official or organised competition must apply for a permit from the City's Events Office in accordance with the Events Policy

4.11. Jetskiing

No jetski may come within 300m of the shoreline across the coastline unless in the following demarcated areas (Annexure B):

- Gordon's Bay
- Strand
- Tableview
- Melkbos
- Zonwabe inshore area
- Blaauwberg inshore area

Jetskis are prohibited from the Table Mountain National Park Marine Protected Area (Mouille Point to Muizenberg Corner) under the National Parks Act

4.12. Motorised Watercraft

The following conditions apply:

- Motorised watercraft may only launch from registered and licensed slipways and launch sites.
- No motorised watercraft may come within 200m of the coastline at any point along the coastline
- No motorised watercraft may land on the coastline unless at a registered and licensed slipway or launch site
- These conditions do not apply to emergency situations, lifesaving watercraft, NSRI watercraft, law enforcement watercraft, Naval watercraft or watercraft undertaking sanctioned public services

4.13. Sailing (all forms)

Unrestricted access with the following conditions:

- No launching or landing permitted at designated swimming areas
- No launching or landing where surfers or other water users are in the surf zone

4.14. Spear Fishing

Not permitted at, or within 500m of any defined recreational beach

4.15. Open Water Swimming

Unrestricted access across the coastline except:

- Where health warnings are posted due to pollution events
- Closure of areas by official lifesaving demarcation at dangerous areas due to strong currents or wave action

Annexure A: Sand yachting demarcated areas

1. Zonwabe and Cemetery Beach
2. Duynefontein



Zonwabe Car Park

Zonwabe and Cemetery Beach

Legend

 Permissible area: sand yachting



March 2014

CITY OF CAPE TOWN
ISEXEKO SASEKAPA
STAD KAAPSTAD






Duynefontein



March 2014

Legend

 Permissible area: sand yachting

CITY OF CAPE TOWN
ISEXEKO SASEKAPA
STAD KAAPSTAD

Annexure B: Jetski demarcated areas

1. Gordon's Bay
2. Strand
3. Tableview
4. Melkbos
5. Zonwabe inshore area
6. Blaauwberg inshore area

Harbour Island

Jetskis to remain 300m offshore at all points along the Gordon's Bay and Strand shore except to gain access to and depart from slipways.

Gordons Bay

Legend

Jetski use area



March 2014

CITY OF CAPE TOWN
ISEXEKO SASEKAPA
STAD KAAPSTAD



Jetskis to remain 300m offshore at all points along the Gordon's Bay and Strand shore except to gain access to and depart from slipways.

Slipway

Strand

Legend

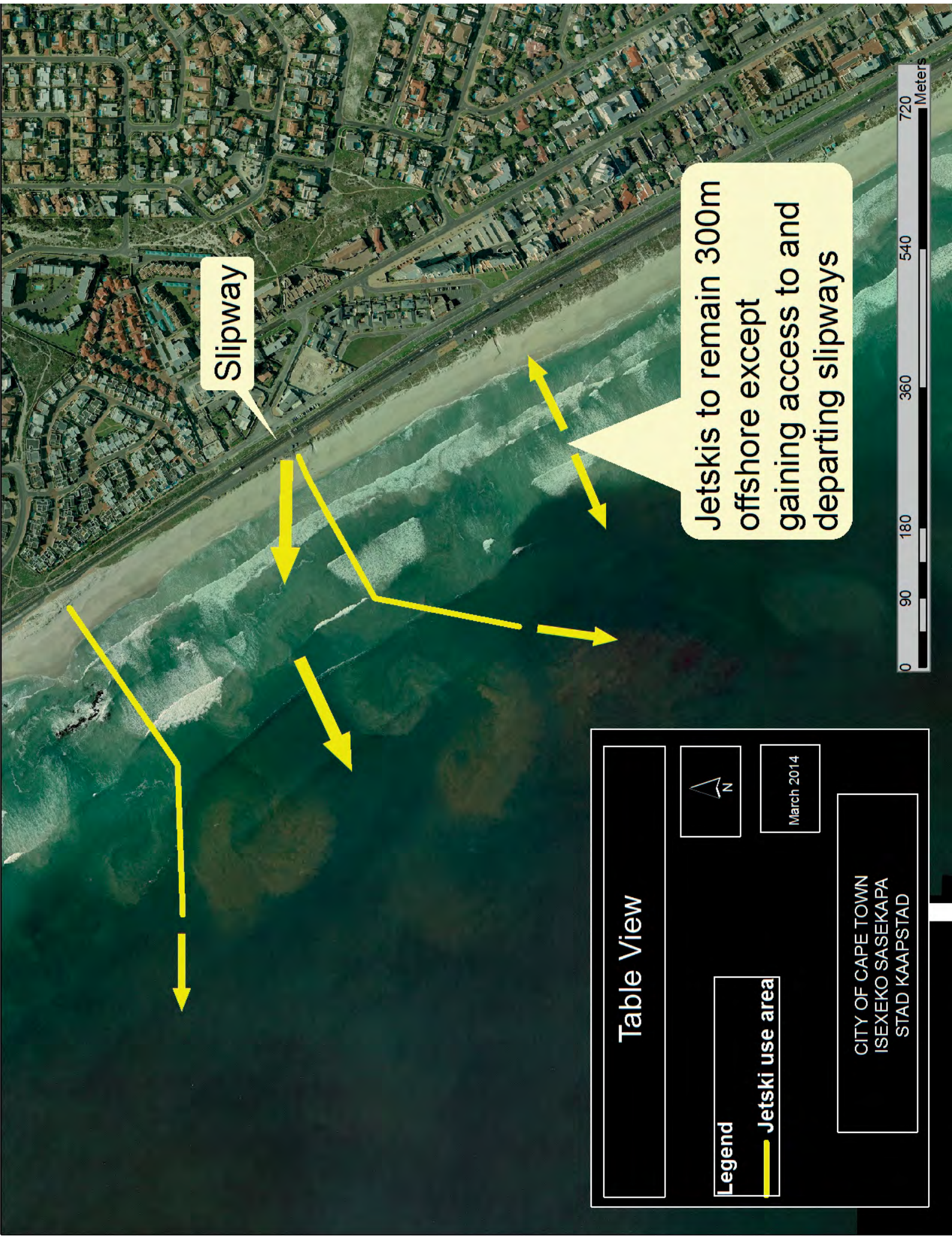
Jetski use area

N

March 2014

CITY OF CAPE TOWN
ISEXEKO SASEKAPA
STAD KAAPSTAD

0 75 150 300 450 600 Meters





Slipway

Jetskis to remain 300m offshore except gaining access to and departing slipways

Table View

Legend

 Jetski use area



N

March 2014

CITY OF CAPE TOWN
ISEXEKO SASEKAPA
STAD KAAPSTAD



Jet skis to remain 300m offshore except gaining access to and departing slipways

Slipway

Melkbos

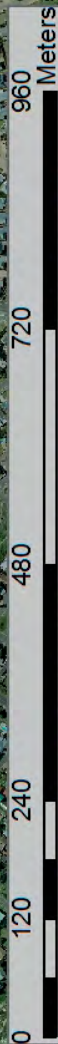
Legend

— Jet ski use area



March 2014

CITY OF CAPE TOWN
ISEXEKO SASEKAPA
STAD KAAPSTAD







Blaauwberg

Legend

— Jetski use area



March 2014

CITY OF CAPE TOWN
ISEXEKO SASEKAPA
STAD KAAPSTAD